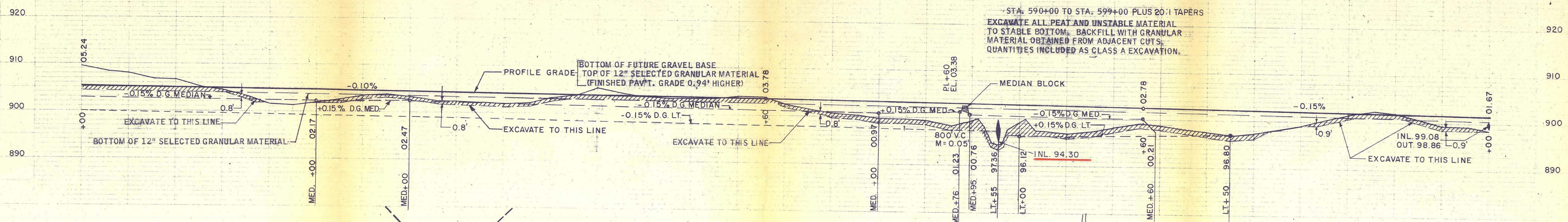
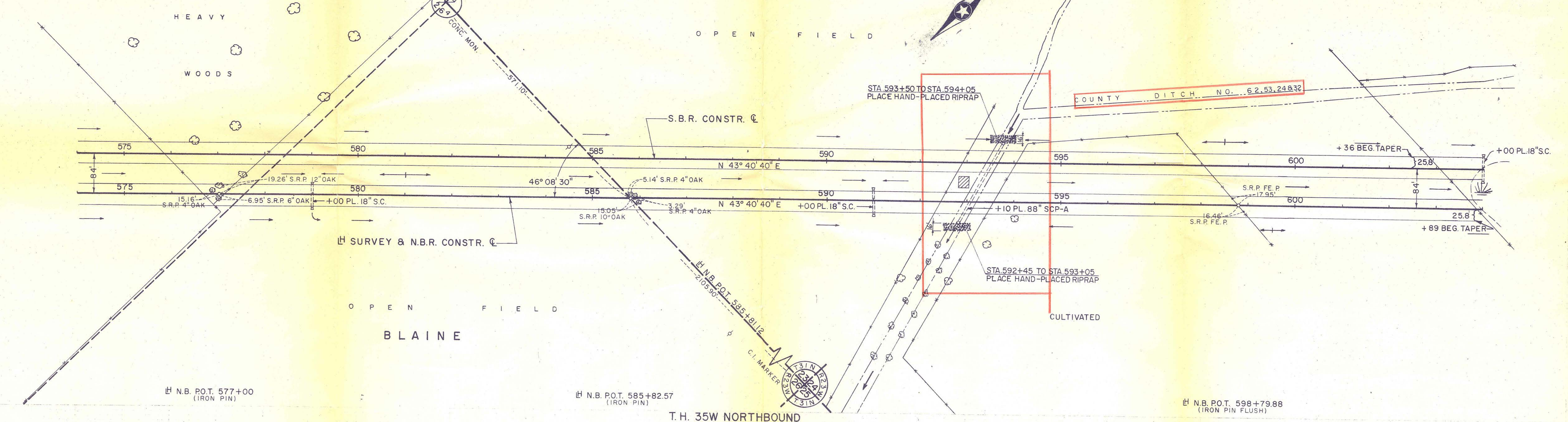


T.H. 35W SOUTHBOUND



STA. 590+00 TO STA. 599+00 PLUS 20:1 TAPERS
 EXCAVATE ALL PEAT AND UNSTABLE MATERIAL TO STABLE BOTTOM. BACKFILL WITH GRANULAR MATERIAL OBTAINED FROM ADJACENT CUTS. QUANTITIES INCLUDED AS CLASS A EXCAVATION.

BLAINE

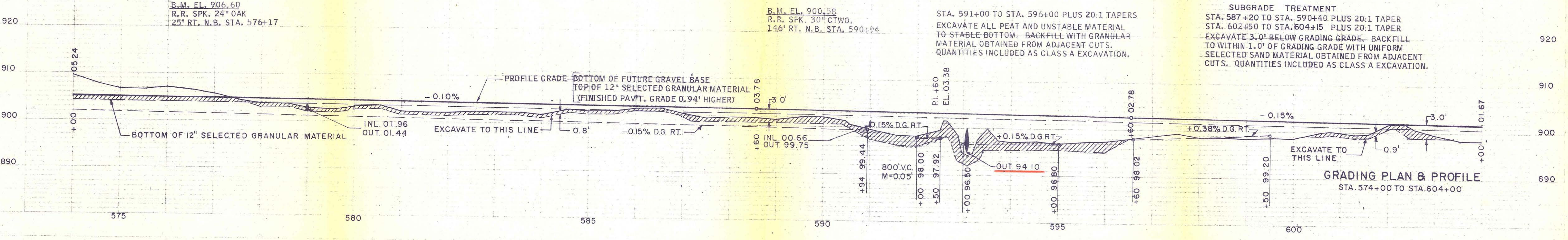


STA 593+50 TO STA 594+05
 PLACE HAND-PLACED RIPRAP

COUNTY DITCH NO. 62,53,24 & 32

STA 592+45 TO STA 593+05
 PLACE HAND-PLACED RIPRAP

T.H. 35W NORTHBOUND



STA. 591+00 TO STA. 596+00 PLUS 20:1 TAPERS
 EXCAVATE ALL PEAT AND UNSTABLE MATERIAL TO STABLE BOTTOM. BACKFILL WITH GRANULAR MATERIAL OBTAINED FROM ADJACENT CUTS. QUANTITIES INCLUDED AS CLASS A EXCAVATION.

SUBGRADE TREATMENT
 STA. 587+20 TO STA. 590+40 PLUS 20:1 TAPER
 STA. 602+50 TO STA. 604+15 PLUS 20:1 TAPER
 EXCAVATE 3.0' BELOW GRADING GRADE. BACKFILL TO WITHIN 1.0' OF GRADING GRADE WITH UNIFORM SELECTED SAND MATERIAL OBTAINED FROM ADJACENT CUTS. QUANTITIES INCLUDED AS CLASS A EXCAVATION.

GRADING PLAN & PROFILE
 STA. 574+00 TO STA. 604+00