

# N 1/2 SEC. II, T.31, R.23

## CITY OF BLAINE

THIS IS A COMPILATION OF RECORDS AS THEY APPEAR IN THE ANOKA COUNTY OFFICES AFFECTING THE AREA SHOWN. THIS DRAWING IS TO BE USED ONLY FOR REFERENCE PURPOSES AND THE COUNTY IS NOT RESPONSIBLE FOR ANY INACCURACIES HEREIN CONTAINED.

14111

4

NW CORNER  
SEC. II

N 1/4 CORNER  
SEC. II

NE CORNER  
SEC. II

(COUNTY STATE AID HIGHWAY NO. 14)

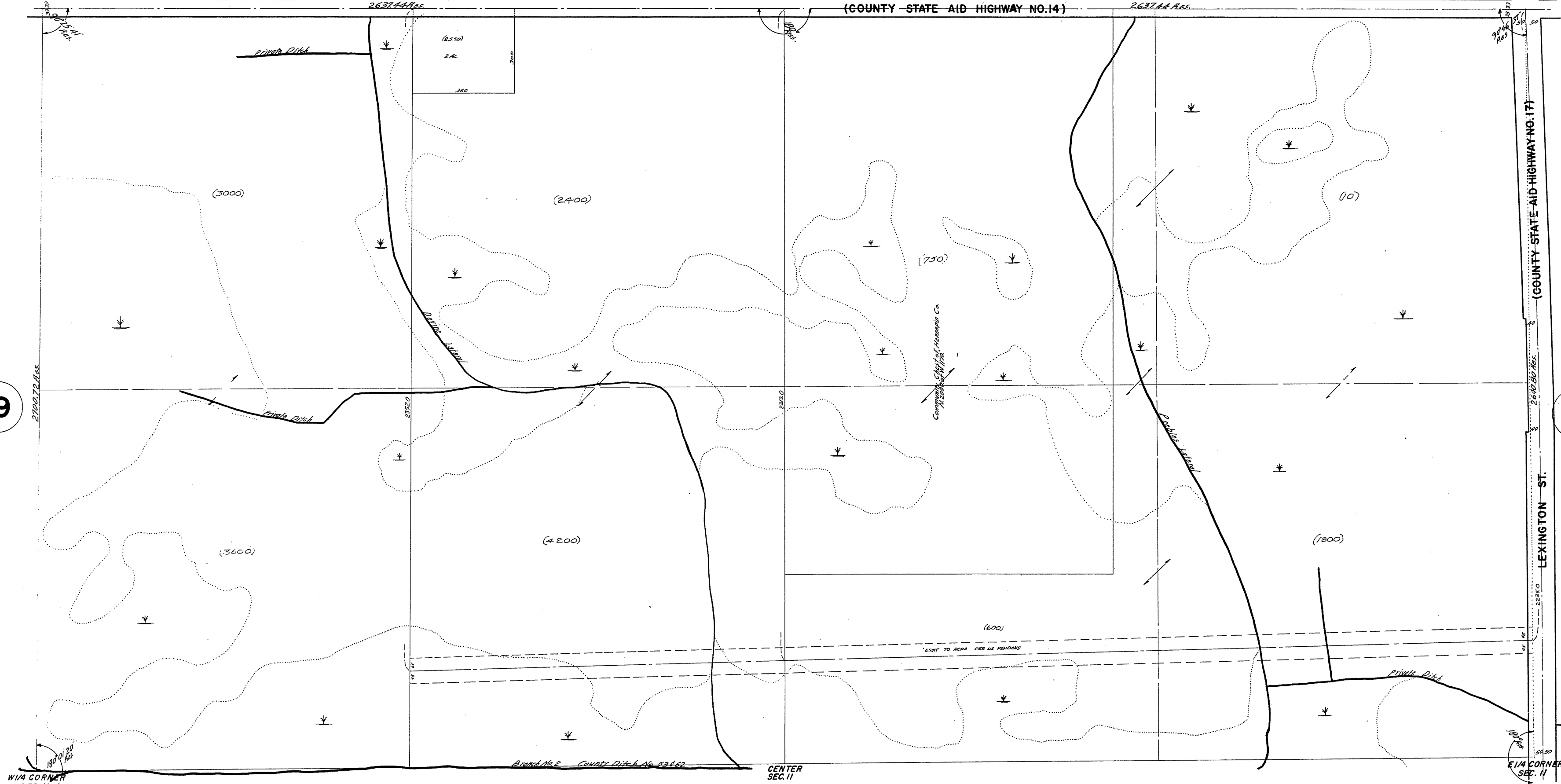
(COUNTY STATE AID HIGHWAY NO. 17)

LEXINGTON ST.

19

23

22



W 1/4 CORNER  
SEC. II

CENTER  
SEC. II

E 1/4 CORNER  
SEC. II

ROLAND W. ANDERSON  
COUNTY SURVEYOR  
ANOKA COUNTY, MINNESOTA  
Rev. 5-15-70  
Redrawn 1-9-67 G.T.