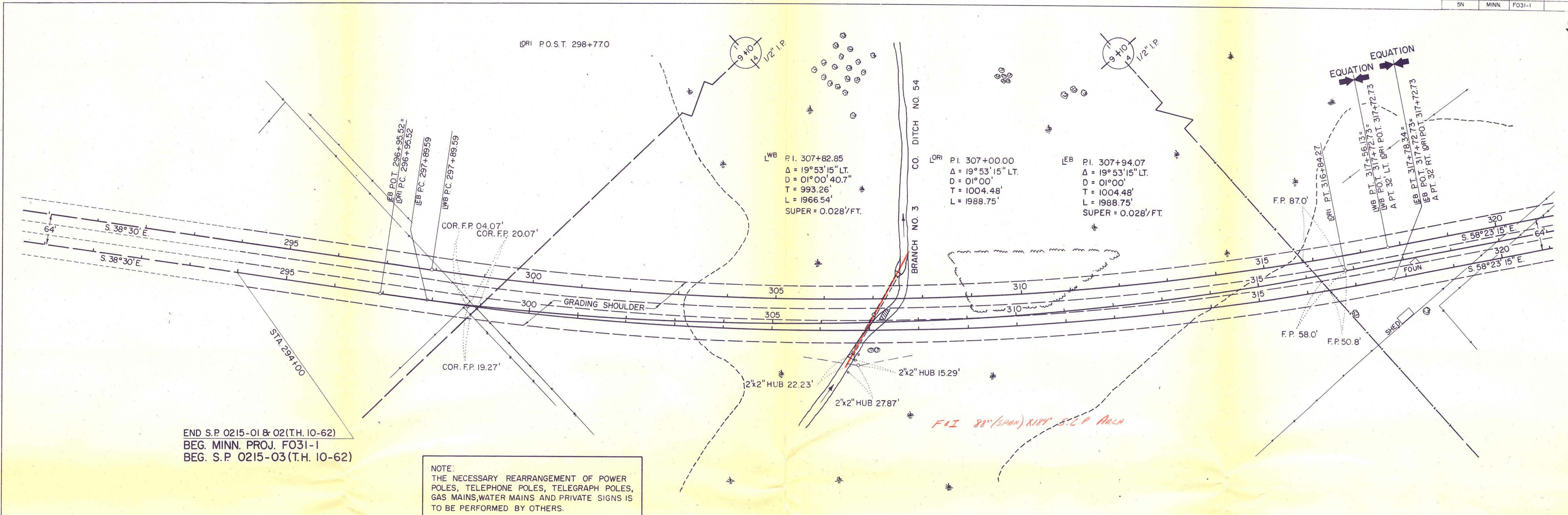


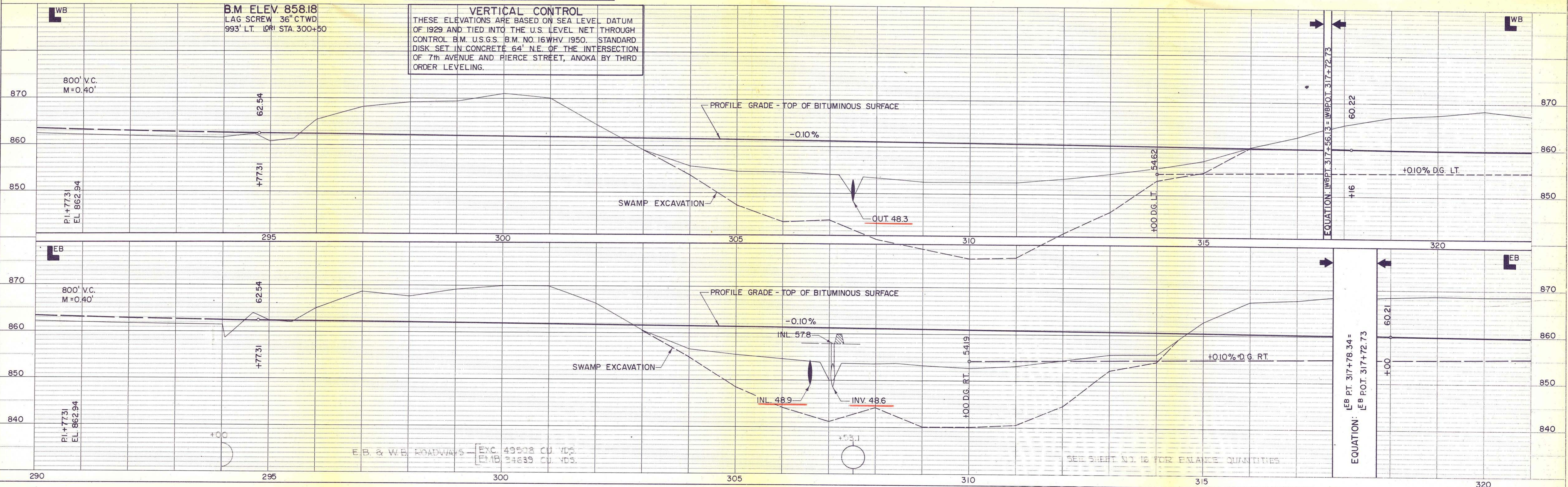
BY	DATE
SURVEYED	
PLOTTED	
CHECKED	
NOTE BOOK No.	

BY	DATE
SURVEYED	
PLOTTED	
CHECKED	
NOTE BOOK No.	



END S.P. 0215-01 & 02 (T.H. 10-62)  
 BEG. MINN. PROJ. FO31-1  
 BEG. S.P. 0215-03 (T.H. 10-62)

NOTE:  
 THE NECESSARY REARRANGEMENT OF POWER POLES, TELEPHONE POLES, TELEGRAPH POLES, GAS MAINS, WATER MAINS AND PRIVATE SIGNS IS TO BE PERFORMED BY OTHERS.



**VERTICAL CONTROL**  
 THESE ELEVATIONS ARE BASED ON SEA LEVEL DATUM OF 1929 AND TIED INTO THE U.S. LEVEL NET THROUGH CONTROL B.M. U.S.G.S. B.M. NO. 16WHV 1950. STANDARD DISK SET IN CONCRETE 64' N.E. OF THE INTERSECTION OF 7th AVENUE AND PIERCE STREET, ANOKA BY THIRD ORDER LEVELING.

E.B. & W.B. ROADWAYS - [EXC. 49502 CU. YDS.  
 [EMB. 21635 CU. YDS.]

SEE SHEET NO. 16 FOR BALANCE QUANTITIES