

Not to be built

PILE BRIDGE

Sta. 77+50

Specifications

TIMBER:-

All timber shall be of good quality and of such kinds as the engineer may direct, free loose or unsound knots, worm holes, and all descriptions of decay.

PILES:-

Piles shall be of good live cedar. They must be straight and have all the bark peeled off. They will be round and must be at least twelve (12) inches in diameter at the butt and not less than eight (8) inches in diameter at the small end.

They must be driven to hard bottom, or until they do not sink more than five (5) inches under the last five (5) blows by a hammer of at least 1200 lbs. weight falling twenty (20) feet.

All piles injured in driving, or driven out of place, shall be either cut off or withdrawn, as the engineer may elect, and another one driven in its stead. The pile thus replaced will not be paid for.

SPECIFICATIONS FOR CULVERTS.

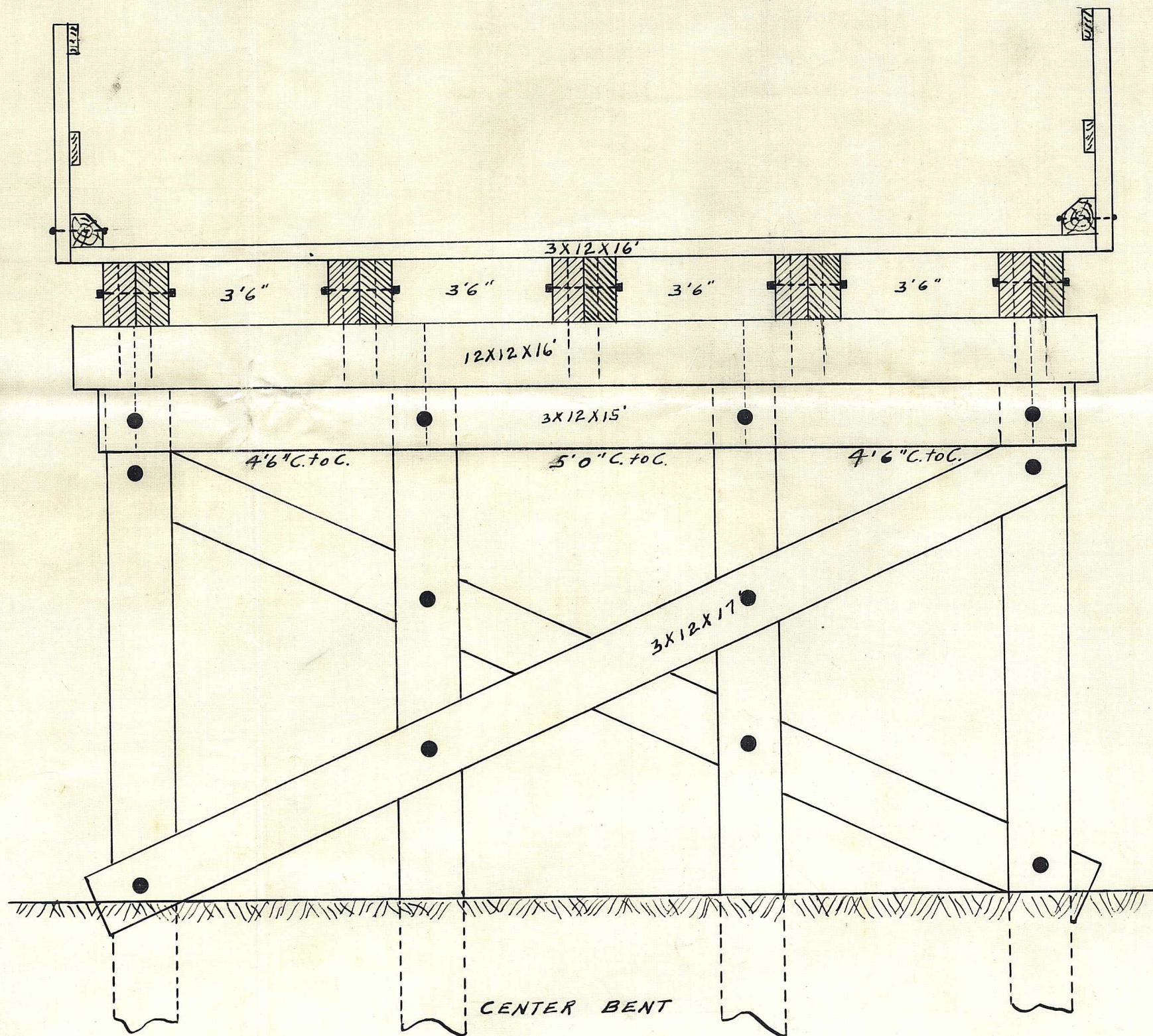
All culverts must be of galvanized openhearth steel, and must be of such length and diameter as the engineer may elect.

ESTIMATED COST

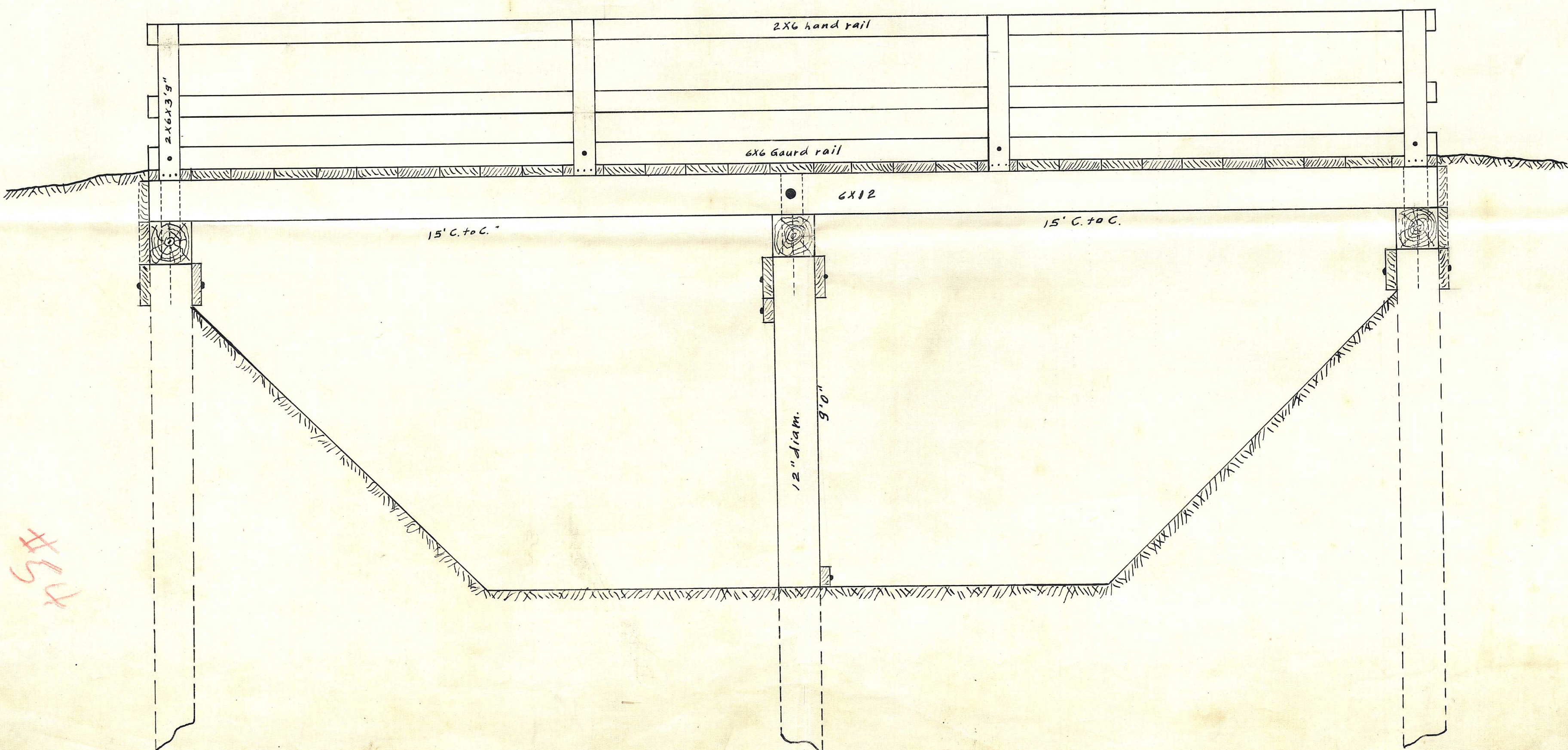
and

BILL OF Material

Material	Kind	No. of Pieces	Size	Length	Quant.	Price	Am't.
Flooring	Fir	31	3X12	16'	1488	30.00	44.64
Hand rail	Y.P.	10	2X6	16'	160	25.00	4.00
Guard "	"	4	6X6	16'	142	30.00	5.76
Stringers	"	10	2X12	16'	960	35.00	33.60
Caps	"	3	12X12	16'	576	35.00	20.16
Bracing Backing	"	16	3X12	16'	758	30.00	22.74
Piling	Cedar	12	12" dia.	16'	192	20.00	38.40
Spikes, bolts, Etc.							10.00
Round drift bolts		32	3/4"				
Bolts & nuts		12	3/4"	20"			
"		8	"	18"			
"		4	"	16"			
"		16	1/2"	10"			
Washers		144	1X3"				
Total Est. Cost of Mat'l.							179.30
" " " Labor							200.00
TOTAL EST. COST							379.30



Not to be built



ELEVATION

#54