

ANOKA COUNTY
COUNTY DITCH INSPECTION REPORT

DITCH # 56

DATE: 7/13/94

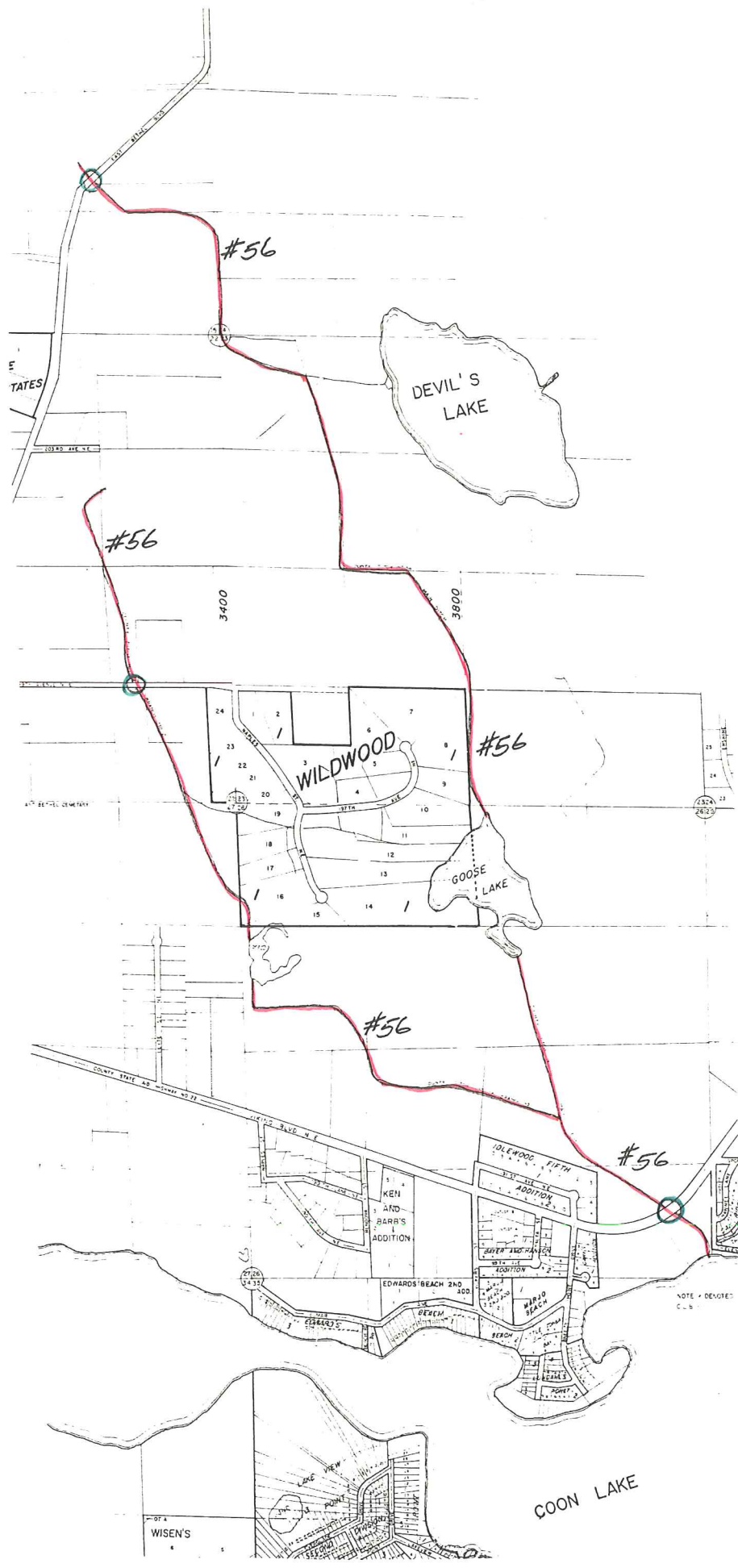
BY: P K Ruud

COMMUNITIES: East Bethel

REMARKS:

CSAH # 22	Ditch defined but no apparent flow.
C R # 15	Ditch poorly defined. Overgrown with brush and canary grass. No apparent flow.
199th Ave NE	Ditch clear on north side, overgrown with cattails on south side. No apparent flow. A 12" CMP culvert is in place across the street. It's top is exposed on the south side of the road and the road shoulder is washing out.

ACTIVITIES:



CO DIT #56