

PLAT SYSTEM SERVICES, INC.
12450 Wayzata Blvd. Ste. 108
Minnetonka, Minnesota 55305

S 1/2 SEC. 23, T.33, R.23

CITY OF EAST BETHEL

THIS IS A COMPILATION OF RECORDS AS THEY APPEAR IN THE ANOKA COUNTY OFFICES AFFECTING THE AREA SHOWN. THIS DRAWING IS TO BE USED ONLY FOR REFERENCE PURPOSES AND THE COUNTY IS NOT RESPONSIBLE FOR ANY INACCURACIES HEREIN CONTAINED.

69

32

31

42

41

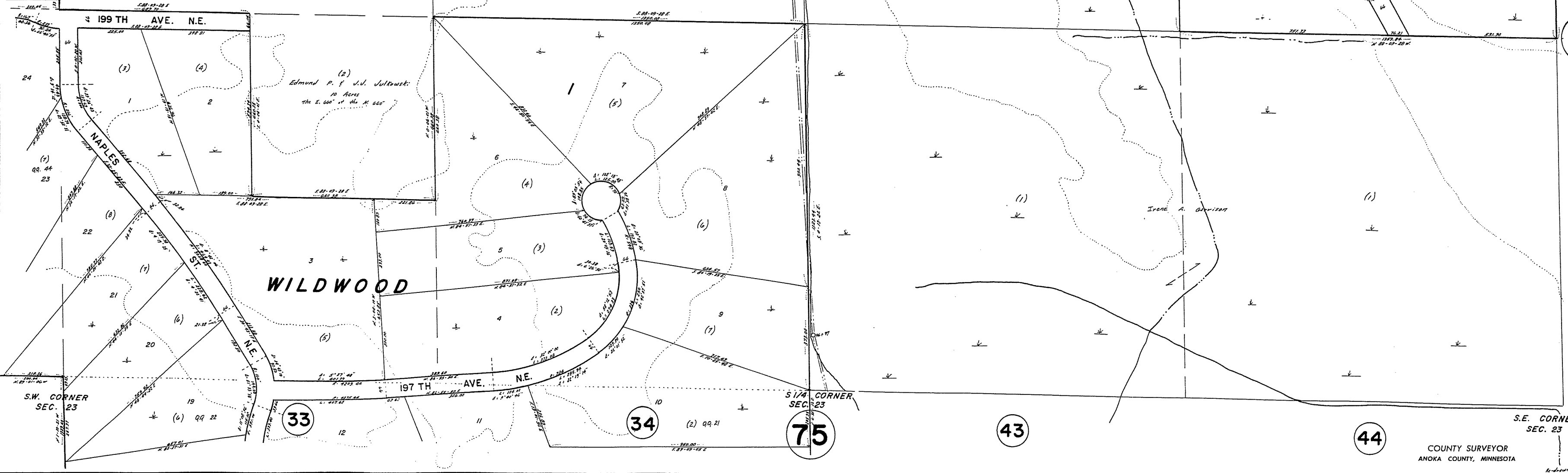
W. 1/4 CORNER
SEC. 23

E 1/4 CORNER
SEC. 23

CENTER
SEC. 23

68

72



WILDWOOD

THE PARK

PARK

S.W. CORNER
SEC. 23

S 1/4 CORNER
SEC. 23

S.E. CORNER
SEC. 23

33

34

75

43

44

COUNTY SURVEYOR
ANOKA COUNTY, MINNESOTA