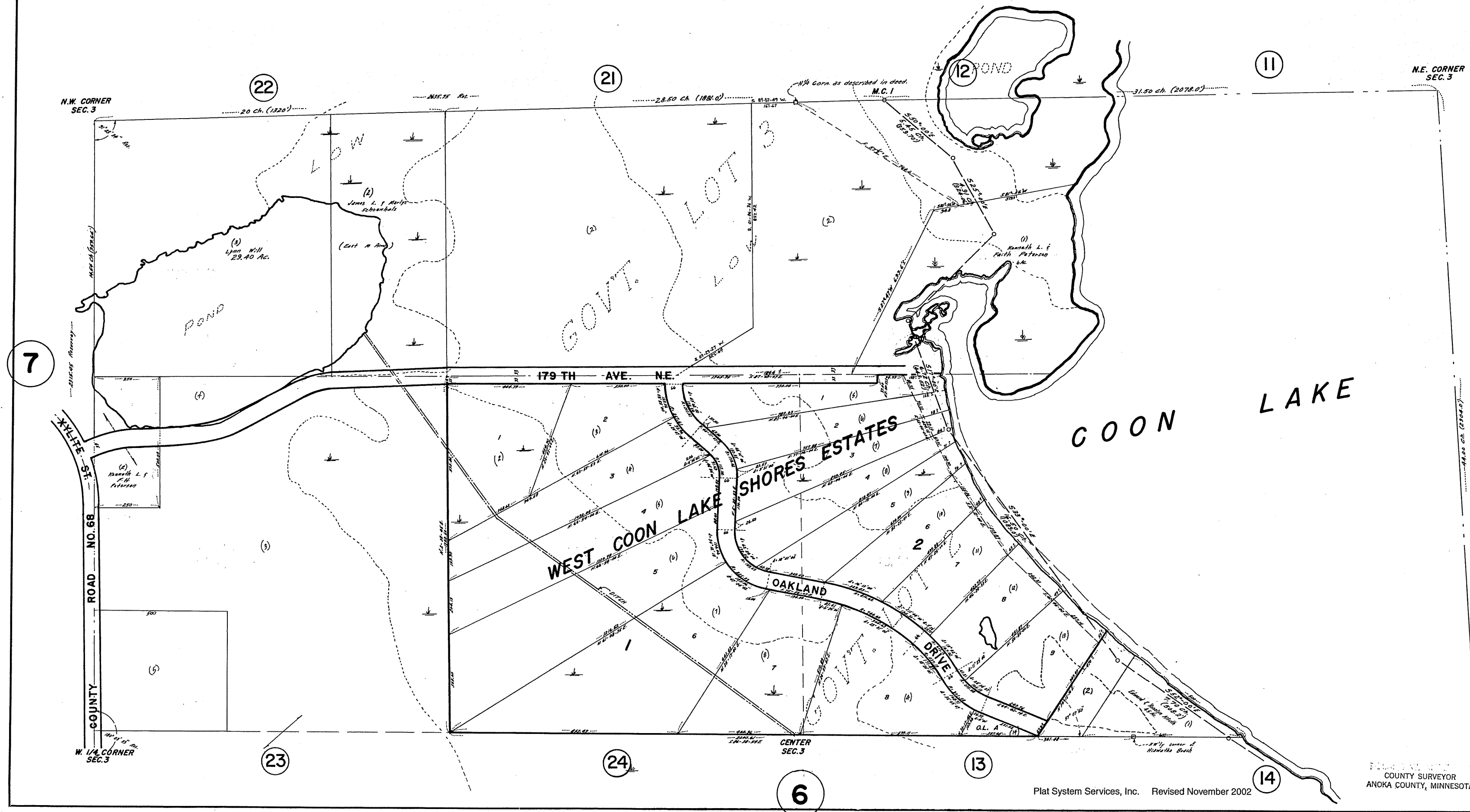


N 1/2 SEC. 3, T.32, R.23

CITY OF HAM LAKE

THIS IS A COMPILATION OF RECORDS AS THEY APPEAR IN THE ANOKA COUNTY OFFICES AFFECTING THE AREA SHOWN. THIS DRAWING IS TO BE USED ONLY FOR REFERENCE PURPOSES AND THE COUNTY IS NOT RESPONSIBLE FOR ANY INACCURACIES HEREIN CONTAINED.

73003



Plat System Services, Inc. Revised November 2002

COUNTY SURVEYOR
ANOKA COUNTY, MINNESOTA

11-15-02 R.M.A.