

S 1/2 SEC. 3 T. 31 R. 23  
CITY OF BLAINE

THIS IS A COMPILATION OF RECORDS AS THEY APPEAR IN THE ANOKA COUNTY OFFICES AFFECTING THE AREA SHOWN. THIS DRAWING IS TO BE USED ONLY FOR REFERENCE PURPOSES AND THE COUNTY IS NOT RESPONSIBLE FOR ANY INACCURACIES HEREIN CONTAINED.

14103

5  
CENTER  
SEC. 3

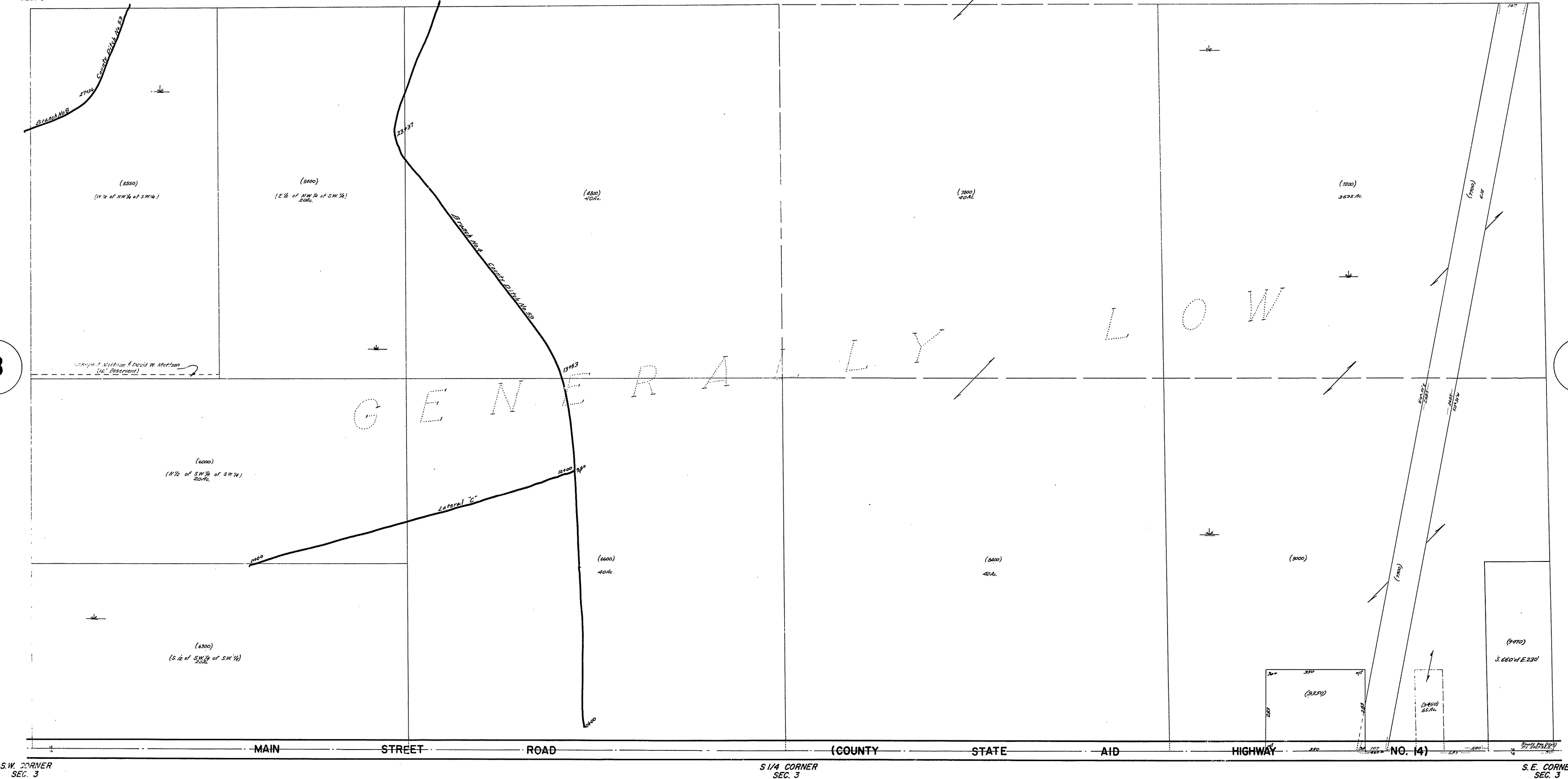
W 1/4 CORNER  
SEC. 3

E 1/4 CORNER  
SEC. 3

8

4

GENERALLY LOW



19  
S 1/4 CORNER  
SEC. 3

S. E. CORNER  
SEC. 3

Plat 6-44  
Plat 7-2-91  
Plat 3-23-67  
Plat 3-1-62  
Plat 1-11-62  
Plat 4-1-62  
Plat 1-20-62  
Plat 6-28-62