

N 1/2 SEC. 21 T. 32 R. 23

CITY OF HAM LAKE

THIS IS A COMPILATION OF RECORDS AS THEY APPEAR IN THE ANOKA COUNTY OFFICES AFFECTING THE AREA SHOWN. THIS DRAWING IS TO BE USED ONLY FOR REFERENCE PURPOSES AND THE COUNTY IS NOT RESPONSIBLE FOR ANY INACCURACIES HEREIN CONTAINED.

73021

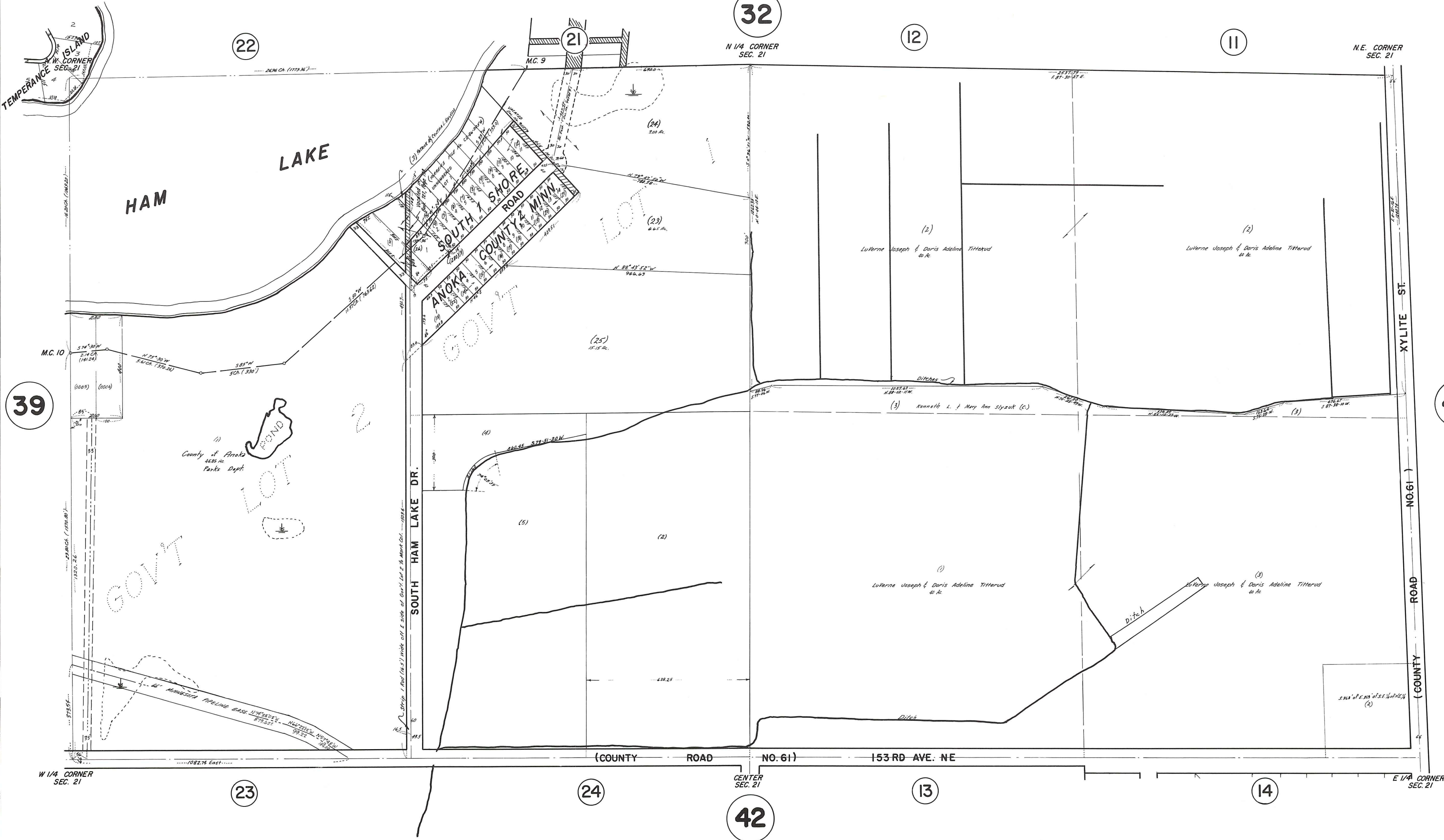
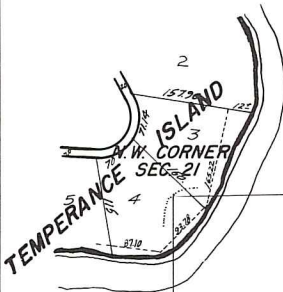
32

12

11

N 1/4 CORNER SEC. 21

N.E. CORNER SEC. 21



39

43

42

13

14

23

24

22

W 1/4 CORNER SEC. 21

E 1/4 CORNER SEC. 21

CENTER SEC. 21

(COUNTY ROAD NO. 61) 153 RD AVE. NE

ROAD NO. 61 (COUNTY ROAD)

ST. XYLITE

DR. HAM LAKE SOUTH

ROAD SHORE SOUTH ANOKA COUNTY MINN

HAM LAKE

LAKE

GOV'T

GOV'T

LOT

LOT

County of Anoka Parks Dept.

Luterne Joseph & Doris Adeline Titterud 40 Ac.

Luterne Joseph & Doris Adeline Titterud 40 Ac.

(3) Kenneth L. & Mary Ann Slyzok (C.)

(1) Luterne Joseph & Doris Adeline Titterud 40 Ac.

(3) Luterne Joseph & Doris Adeline Titterud 40 Ac.

STATE OF MINNESOTA (2)

PLAT 7-19-85
REV. 7-21-90
REV. 11-14-98
REV. 12-14-97
REV. 5-5-95
REV. 8-24-88
REV. 1-17-87