

S 1/2 SEC. 21, T. 32, R. 23

TOWNSHIP OF HAM LAKE

THIS IS A COMPILATION OF RECORDS AS THEY APPEAR IN THE ANOKA COUNTY OFFICES AFFECTING THE AREA SHOWN. THIS DRAWING IS TO BE USED ONLY FOR REFERENCE PURPOSES AND THE COUNTY IS NOT RESPONSIBLE FOR ANY INACCURACIES HEREIN CONTAINED.

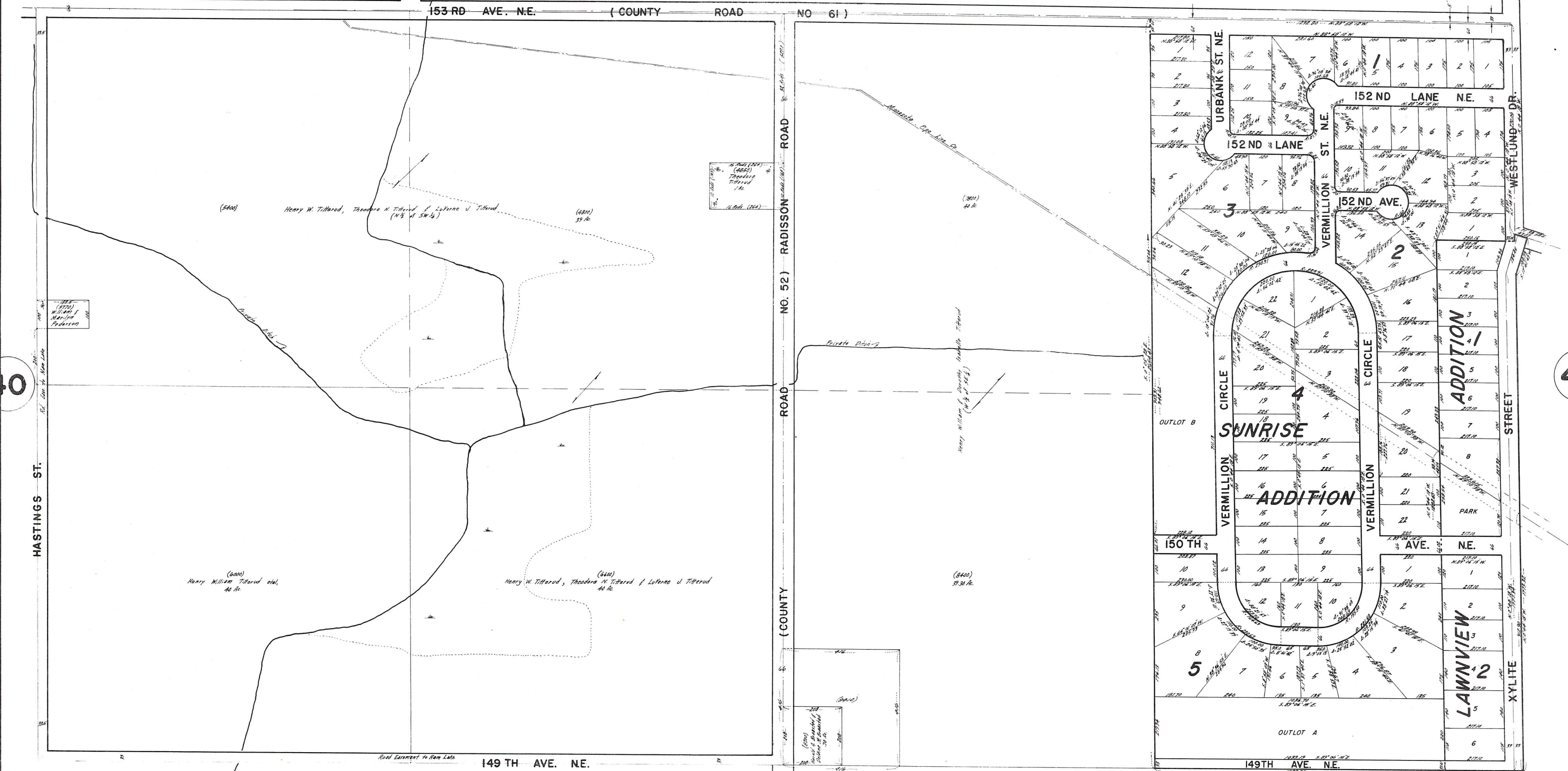
73021

41

W. 1/4 CORNER SEC. 21

E. 1/4 CORNER SEC. 21

CENTER SEC. 21



40

44

55

S.W. CORNER SEC. 21

S. 1/4 CORNER SEC. 21

S.E. CORNER SEC. 21

ROLAND W. ANDERSON
COUNTY SURVEYOR
ANOKA COUNTY, MINNESOTA

ANOKA COUNTY SURVEYOR
OFFICE
100 N. 1ST ST.
ANOKA, MINN. 55401
TEL. 431-1111
FAX 431-1112