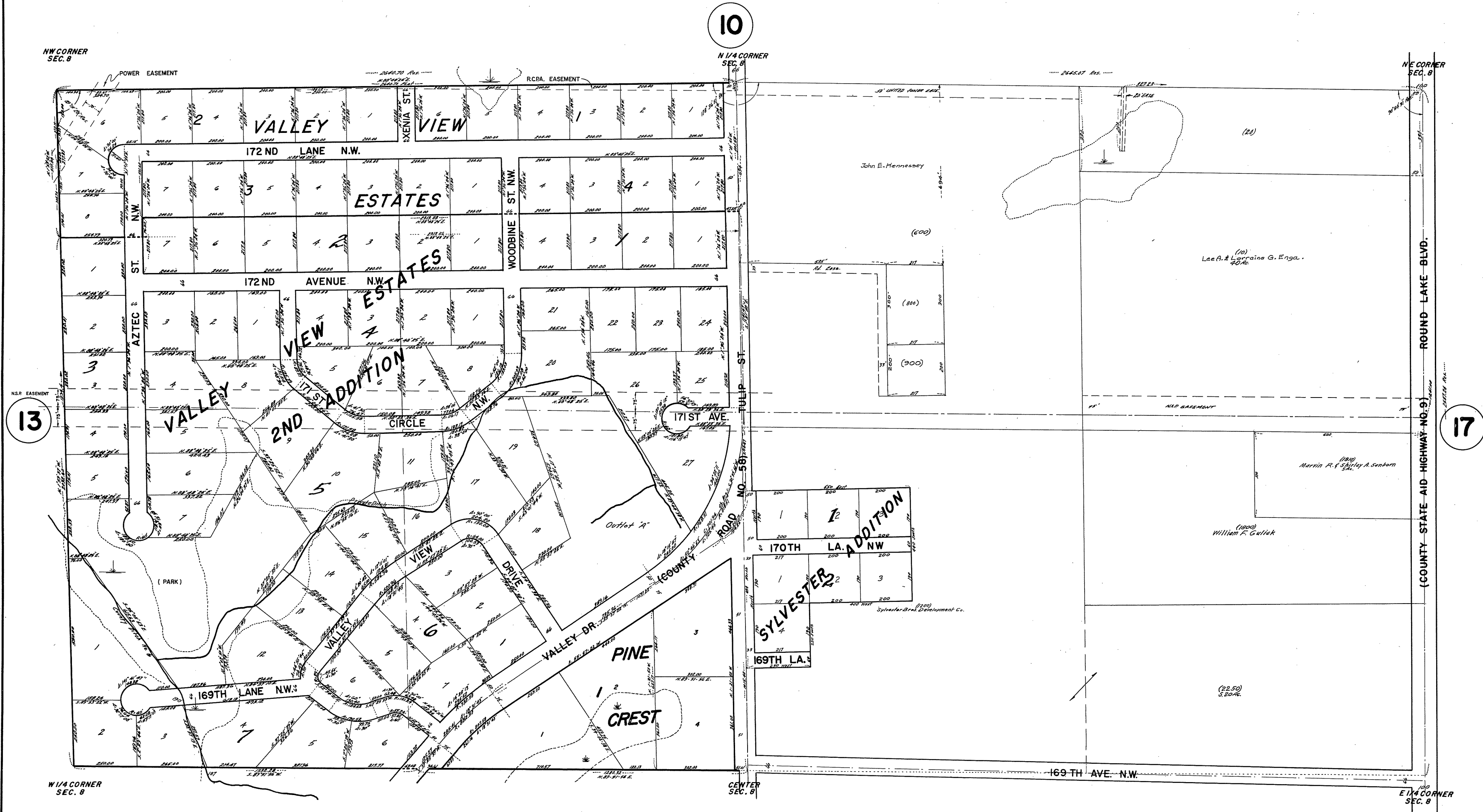


N 1/2 SEC. 8, T.32, R.24

CITY OF ANDOVER

THIS IS A COMPILATION OF RECORDS AS THEY APPEAR IN THE ANOKA COUNTY OFFICES AFFECTING THE AREA SHOWN. THIS DRAWING IS TO BE USED ONLY FOR REFERENCE PURPOSES AND THE COUNTY IS NOT RESPONSIBLE FOR ANY INACCURACIES HEREIN CONTAINED.

65908



10

13

17

16

ROLAND W. ANDERSON
COUNTY SURVEYOR
ANOKA COUNTY, MINNESOTA

PLAT 65908
REV. 8-15-76
REV. 3-20-77
REV. 8-13-78
REV. 9-10-79
REV. 9-27-81
REV. 2-15-84
REV. 2-15-85
REV. 11-15-86