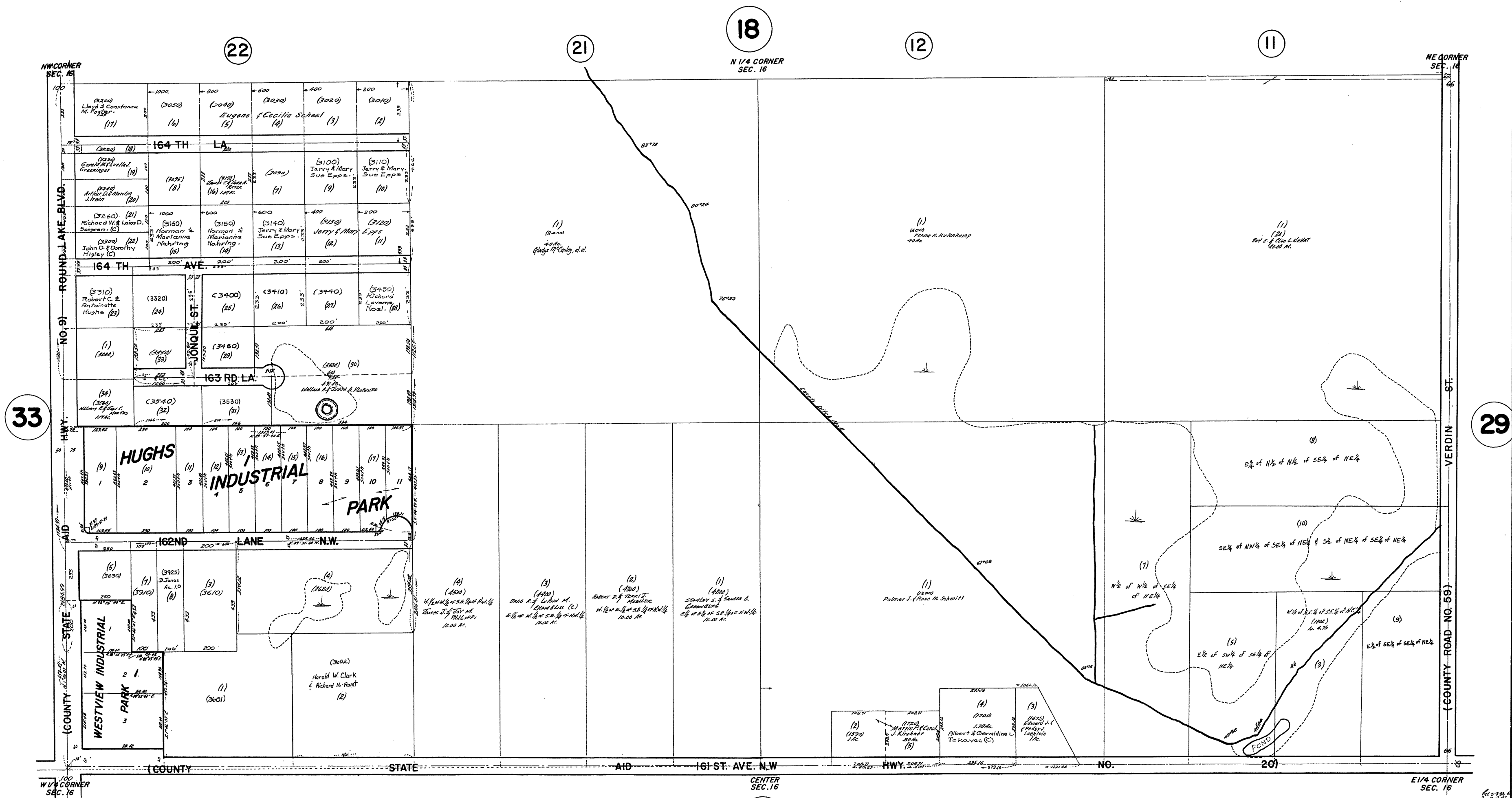


# N 1/2 SEC. 16, T. 32, R. 24

## CITY OF ANDOVER

THIS IS A COMPILATION OF RECORDS AS THEY APPEAR IN THE ANOKA COUNTY OFFICES AFFECTING THE AREA SHOWN. THIS DRAWING IS TO BE USED ONLY FOR REFERENCE PURPOSES AND THE COUNTY IS NOT RESPONSIBLE FOR ANY INACCURACIES HEREIN CONTAINED.

65916



33

29

18  
N 1/4 CORNER  
SEC. 16

11

NE CORNER  
SEC. 16

21

12

22

32  
CENTER  
SEC. 16

14

13

24

23

ROLAND W. ANDERSON  
COUNTY SURVEYOR  
ANOKA COUNTY, MINNESOTA

FILED IN  
RECORDS  
ANOKA COUNTY  
MINNESOTA  
APR 11 1950  
BY  
J. J. HANSEN  
COUNTY CLERK