

N 1/2 SEC. 6 T. 31 R. 23

CITY OF BLAINE

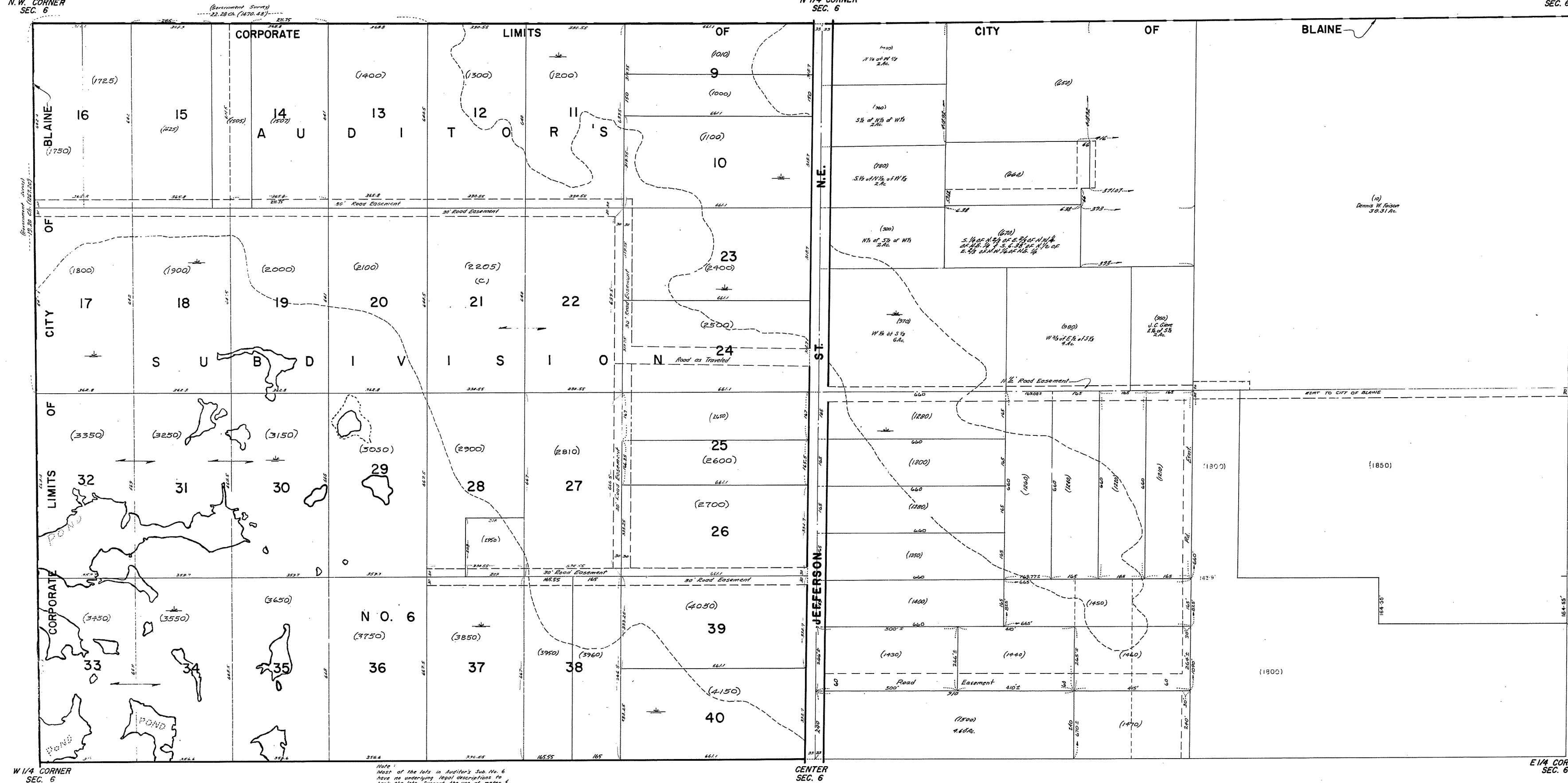
THIS IS A COMPILATION OF RECORDS AS THEY APPEAR IN THE ANOKA COUNTY OFFICES AFFECTING THE AREA SHOWN. THIS DRAWING IS TO BE USED ONLY FOR REFERENCE PURPOSES AND THE COUNTY IS NOT RESPONSIBLE FOR ANY INACCURACIES HEREIN CONTAINED.

14106

N.W. CORNER SEC. 6

N 1/4 CORNER SEC. 6

N.E. CORNER SEC. 6



9

12

W 1/4 CORNER SEC. 6

CENTER SEC. 6

E 1/4 CORNER SEC. 6

Note: Most of the lots in Auditor's Sub No. 6 have no underlying legal descriptions to back the lots. Suggest the use of metes & bounds descriptions to transfer title.

Rev. 1-1-70
 Rev. 3-6-70
 Rev. 6-9-69
 Rev. 1-2-67
 Rev. 5-24-64
 Rev. 3-2-62
 Rev. 8-1-60
 Rev. 1-23-58
 Rev. 6-22-56