

S 1/2 SEC. 24, T.31, R.23

CITY OF BLAINE

THIS IS A COMPILATION OF RECORDS AS THEY APPEAR IN THE ANOKA COUNTY OFFICES AFFECTING THE AREA SHOWN. THIS DRAWING IS TO BE USED ONLY FOR REFERENCE PURPOSES AND THE COUNTY IS NOT RESPONSIBLE FOR ANY INACCURACIES HEREIN CONTAINED.

14124

47

CENTER SEC. 24

E 1/4 CORNER SEC. 24

W. 1/4 CORNER SEC. 24

INTERSTATE HIGHWAY NO. 35W
LEXINGTON AVE. (COUNTY STATE AID HIGHWAY NO. 10)

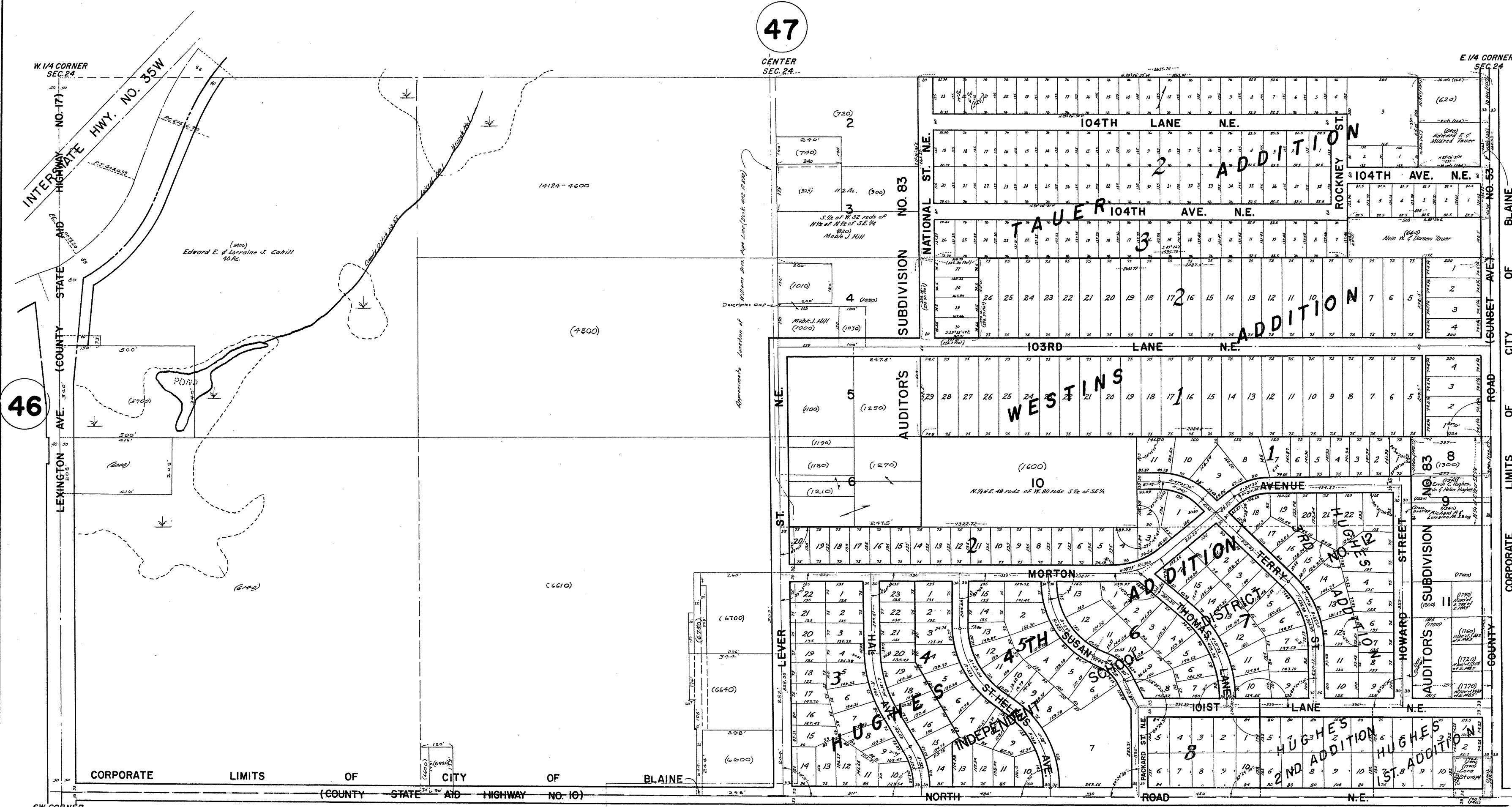
46

SW. CORNER SEC. 24

S. 1/4 CORNER SEC. 24

49

S.E. CORNER SEC. 24



BLAINE CITY OF BLAINE CITY OF BLAINE COUNTY

APL 24 1973
REVISED 5/1973
BY: [illegible]
CHECKED: [illegible]
SCALE: AS SHOWN
DATE: 5/1973
BY: [illegible]