

27

26

Chas. P. Lovell
320 a.

George Scotten
160 a.

Chas. P. Lovell

Hoyt S. Delvin.
80 a.

C. Scotten

120 a.

J. S. Pillsbury
80 a.

Eliza J.
Delvin
40 a.

160 a.

33

34

35

No. 1

Fred B. Snyder

Plot showing
Route
of
DITCH
No. 7

J. T. Elwell
&
Annie C.
Kitchell
40 a

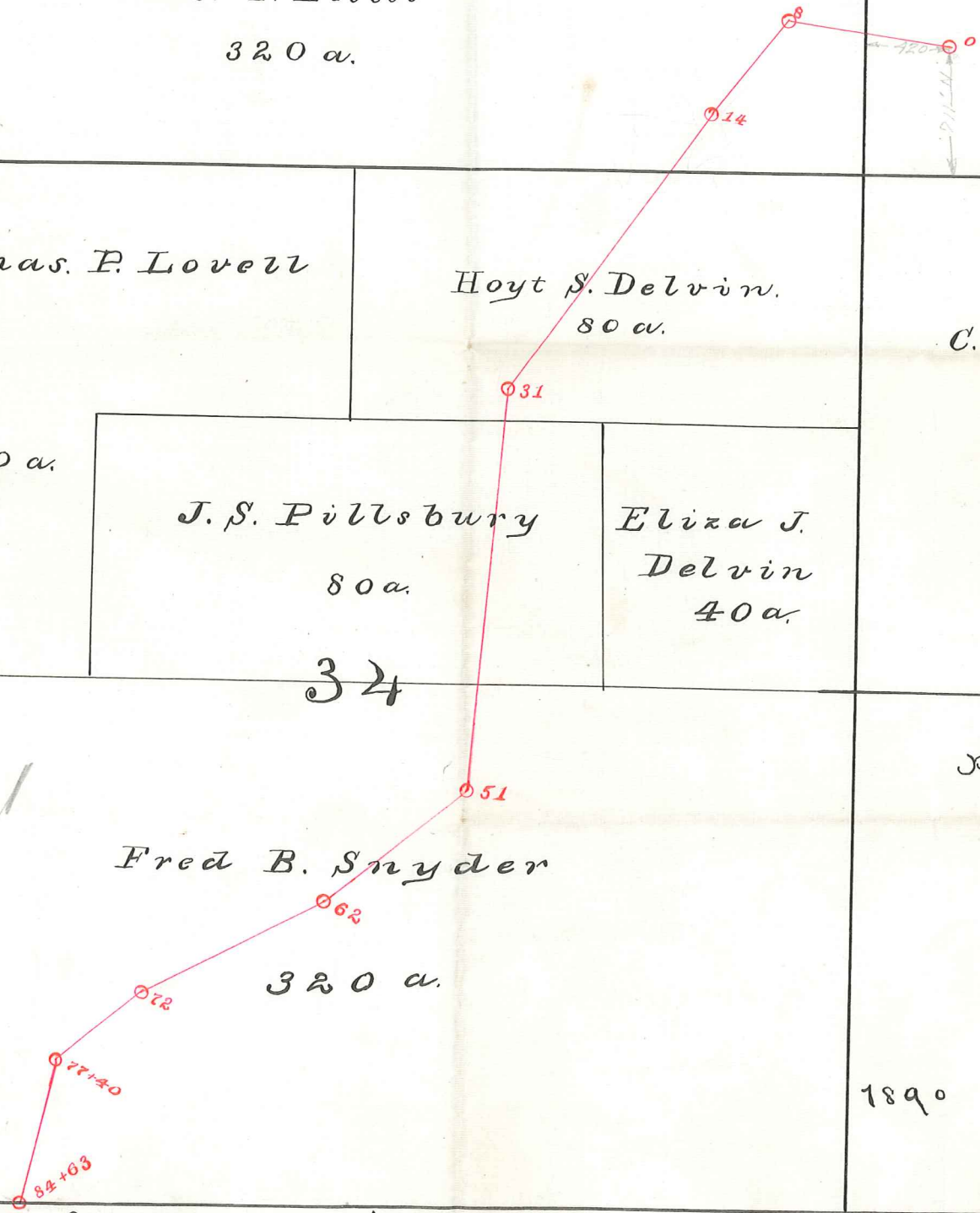
320 a.

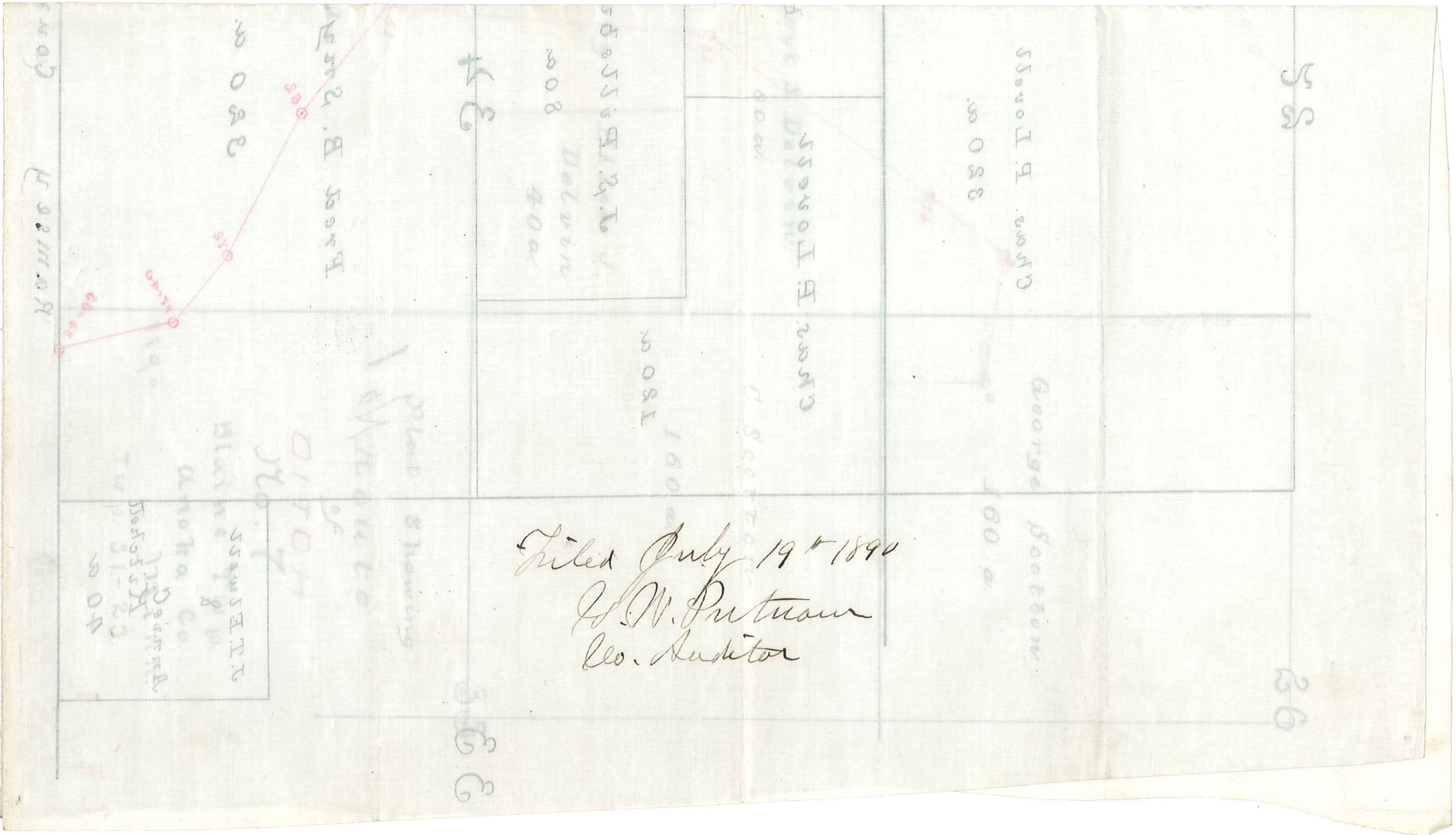
Blaine Twp.
Anoka Co.
Minn.
Twp. 31-23.

1890

Ramsey County

Handwritten notes:
Plot of
Chas. P. Lovell
Hoyt S. Delvin
J. S. Pillsbury
Eliza J. Delvin
Fred B. Snyder
Annie C. Kitchell





Filed July 19th 1890
 J. W. Putnam
 Co. Auditor