

# N 1/2 SEC. 31, T. 33, R. 23

## VILLAGE OF EAST BETHEL

THIS IS A COMPILATION OF RECORDS AS THEY APPEAR IN THE ANOKA COUNTY OFFICES AFFECTING THE AREA SHOWN. THIS DRAWING IS TO BE USED ONLY FOR REFERENCE PURPOSES AND THE COUNTY IS NOT RESPONSIBLE FOR ANY INACCURACIES HEREIN CONTAINED.

7131

84

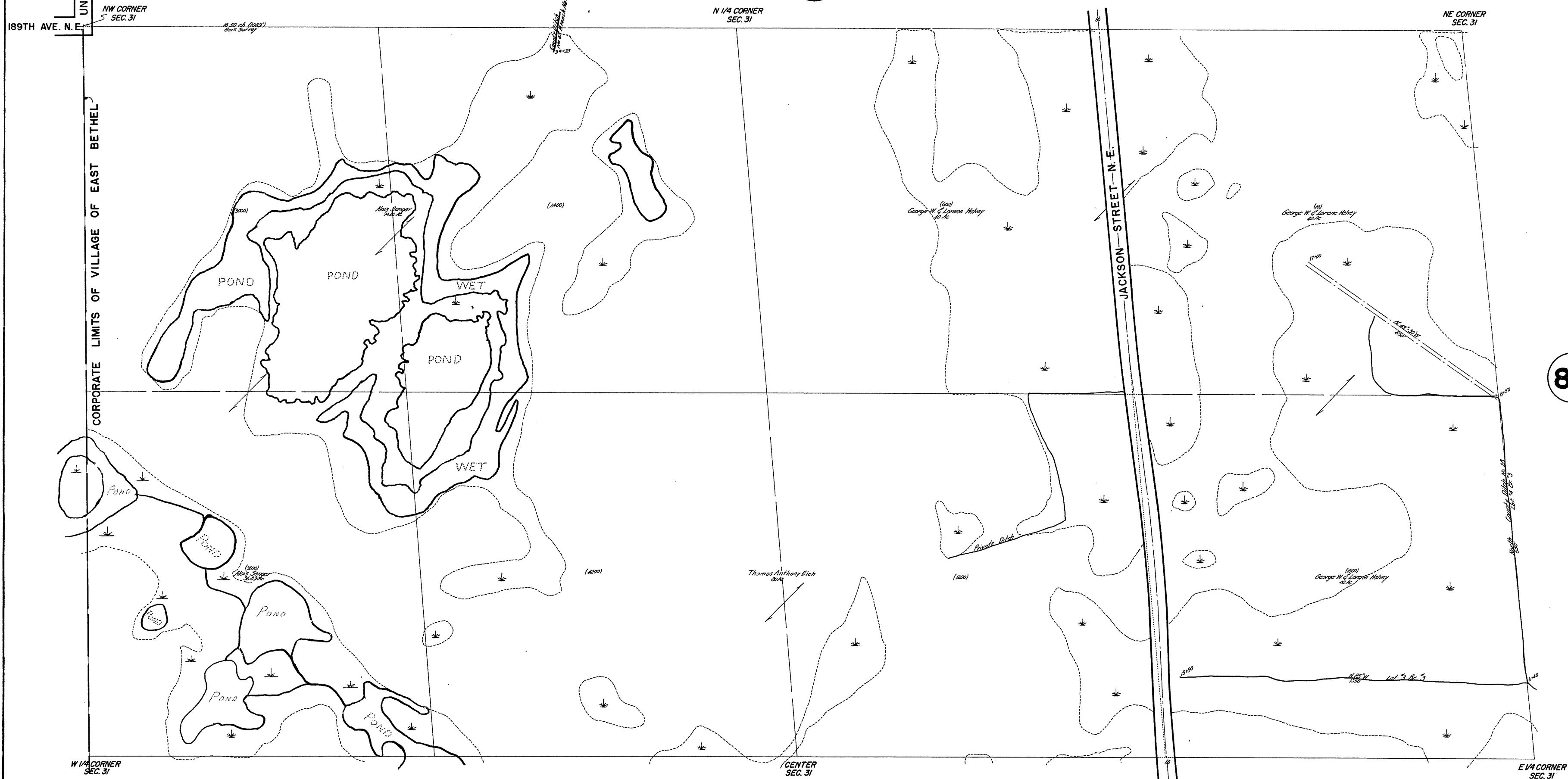
87

86

UNIVERSITY EXTENSION

CORPORATE LIMITS OF VILLAGE OF EAST BETHEL

JACKSON STREET - N.E.



Rev. 6-18-70  
 Rev. 2-28-87  
 Rev. 4-8-88  
 Rev. 8-10-88  
 MAP 5-3-88