

N 1/2 SEC. 16, T. 31, R. 23

CITY OF BLAINE

THIS IS A COMPILATION OF RECORDS AS THEY APPEAR IN THE ANOKA COUNTY OFFICES AFFECTING THE AREA SHOWN. THIS DRAWING IS TO BE USED ONLY FOR REFERENCE PURPOSES AND THE COUNTY IS NOT RESPONSIBLE FOR ANY INACCURACIES HEREIN CONTAINED.

14116

18

22

21

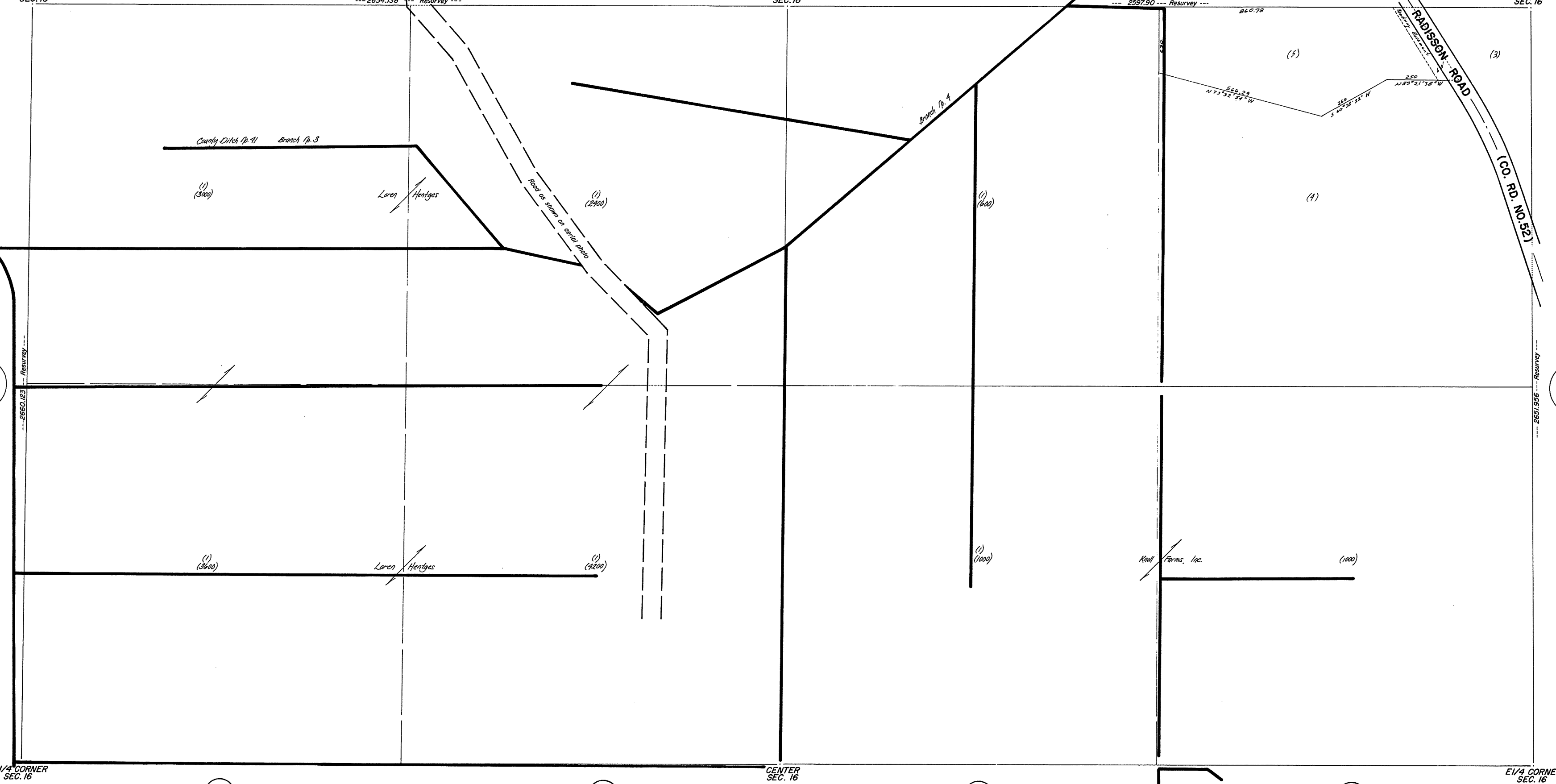
12

11

NW CORNER SEC. 16

N 1/4 CORNER SEC. 16

NE CORNER SEC. 16



33

29

23

24

13

14

W 1/4 CORNER SEC. 16

CENTER SEC. 16

E 1/4 CORNER SEC. 16

32

ACREAGE							
N.W. 1/4				N.E. 1/4			
N.E.	N.W.	S.W.	S.E.	N.E.	N.W.	S.W.	S.E.
40.2047	40.2433	40.3419	40.3034	39.6688	39.6908	39.9269	39.9049

ROLAND W. ANDERSON
COUNTY SURVEYOR
ANOKA COUNTY, MINNESOTA

12-9-95
11-1-94
WETLAND BOUNDARIES TAKEN FROM 1981 AERIALS
RE-DRAWN 12/20/93