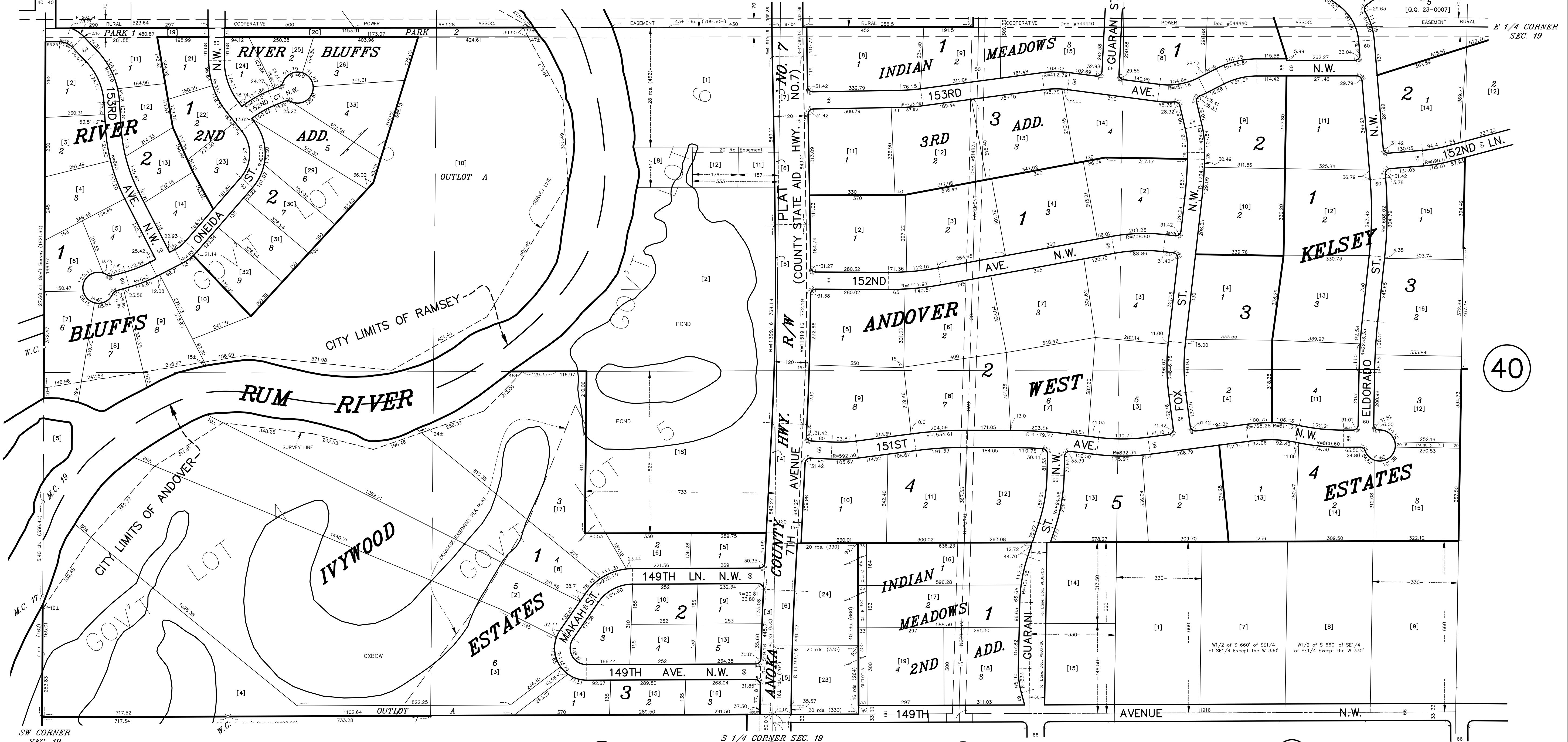


# S 1/2 SECTION 19, T. 32, R. 24

## CITY OF ANDOVER CITY OF RAMSEY

W 1/4 CORNER  
SEC. 19

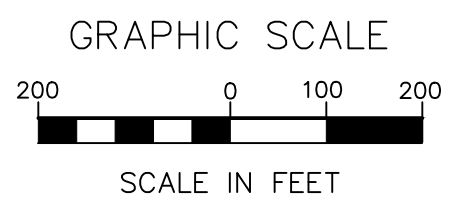
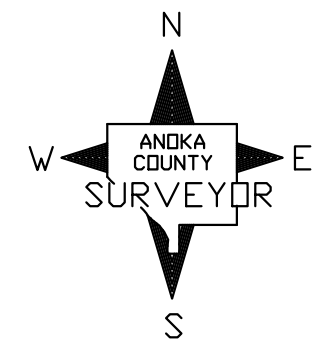
E 1/4 CORNER  
SEC. 19



SW CORNER  
SEC. 19

S 1/4 CORNER SEC. 19

SE CORNER  
SEC. 19



ANOKA COUNTY  
SURVEYOR'S OFFICE  
ROOM 224  
2100 3RD AVENUE  
ANOKA, MN 55303  
(763) 324-3200

QUARTER QUARTER INDEX

22	21	12	11	NORTH HALF OF SECTION
23	24	13	14	
32	31	42	41	SOUTH HALF OF SECTION
33	34	43	44	

PROPERTY IDENTIFICATION NUMBER

Section Township Range Quarter Specific  
Number Number Number Quarter Parcel

XX XX XX XX XXXX

SPECIFIC PARCEL NUMBERS ARE IN BRACKETS: [1]  
EXAMPLE OF PIN NUMBER: 19-32-24-43-0018

THIS IS A COMPILATION OF RECORDS AS  
THEY APPEAR IN THE ANOKA COUNTY  
OFFICES AFFECTING THE AREA SHOWN.  
THIS DRAWING IS TO BE USED ONLY FOR  
REFERENCE PURPOSES AND THE COUNTY  
IS NOT RESPONSIBLE FOR ANY  
INACCURACIES HEREIN CONTAINED.