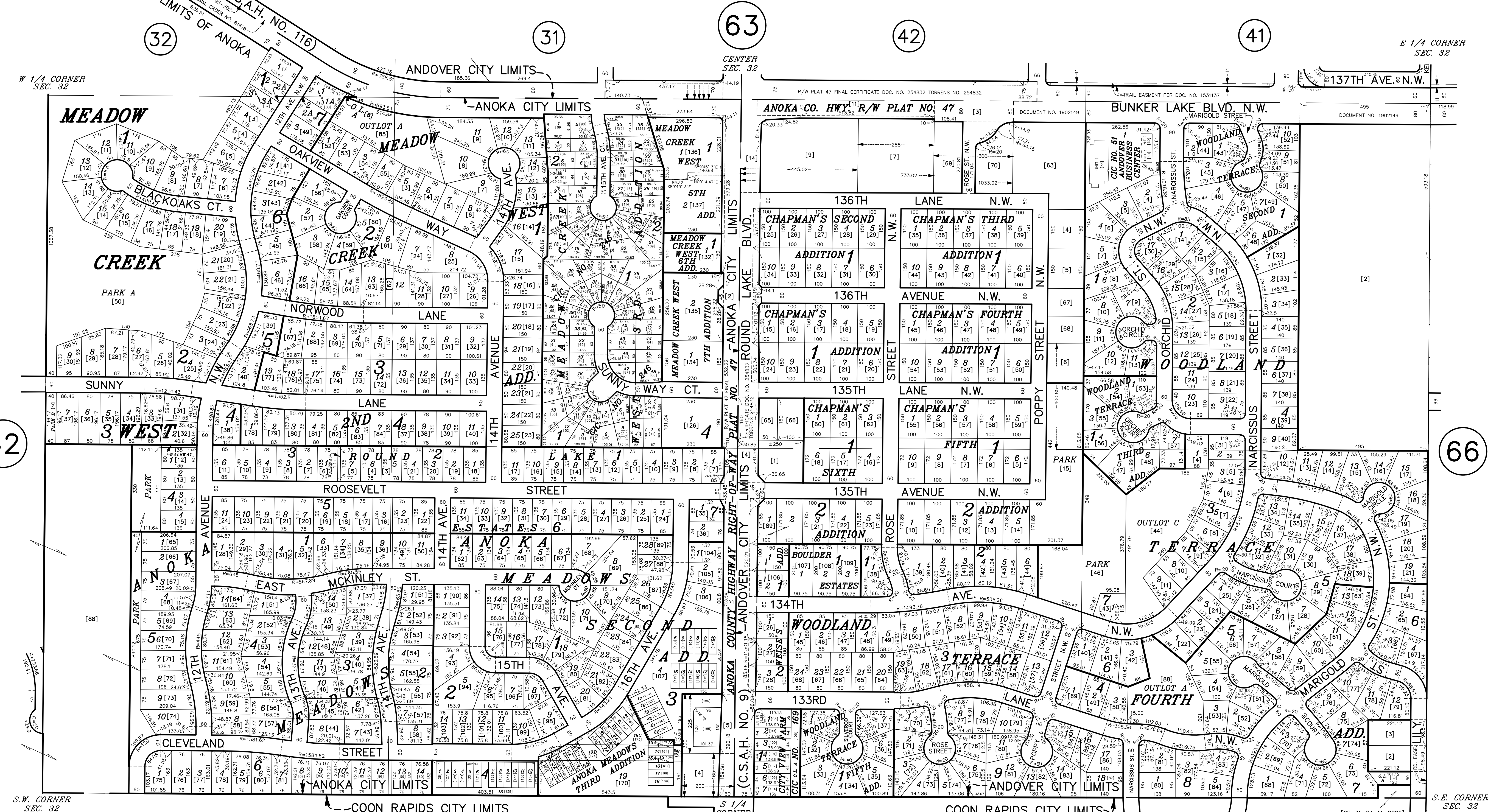


S 1/2 SECTION 32, T. 32, R. 24

CITY OF ANDOVER & CITY OF ANOKA



62

63

42

41

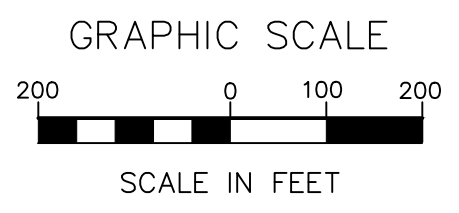
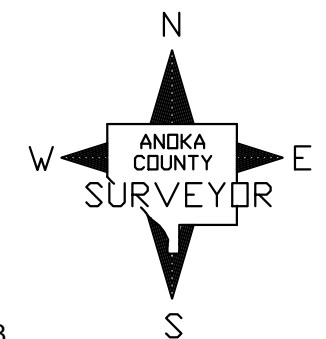
66

33

34

43

44



ANOKA COUNTY
SURVEYOR'S OFFICE
ROOM 224
2100 3RD AVENUE
ANOKA, MN 55303
(763) 324-3200

QUARTER QUARTER INDEX

| | | | |
|-----------------------|----|----|----|
| 22 | 21 | 12 | 11 |
| 23 | 24 | 13 | 14 |
| NORTH HALF OF SECTION | | | |
| 32 | 31 | 42 | 41 |
| 33 | 34 | 43 | 44 |
| SOUTH HALF OF SECTION | | | |

PROPERTY IDENTIFICATION NUMBER

Section Township Range Quarter Specific
Number Number Number Quarter Parcel
XX XX XX XX XXXX
SPECIFIC PARCEL NUMBERS ARE IN BRACKETS: [1]
EXAMPLE OF PIN NUMBER: 32-32-24-43-0035

THIS IS A COMPILATION OF RECORDS AS THEY APPEAR IN THE ANOKA COUNTY OFFICES AFFECTING THE AREA SHOWN. THIS DRAWING IS TO BE USED ONLY FOR REFERENCE PURPOSES AND THE COUNTY IS NOT RESPONSIBLE FOR ANY INACCURACIES HEREIN CONTAINED.