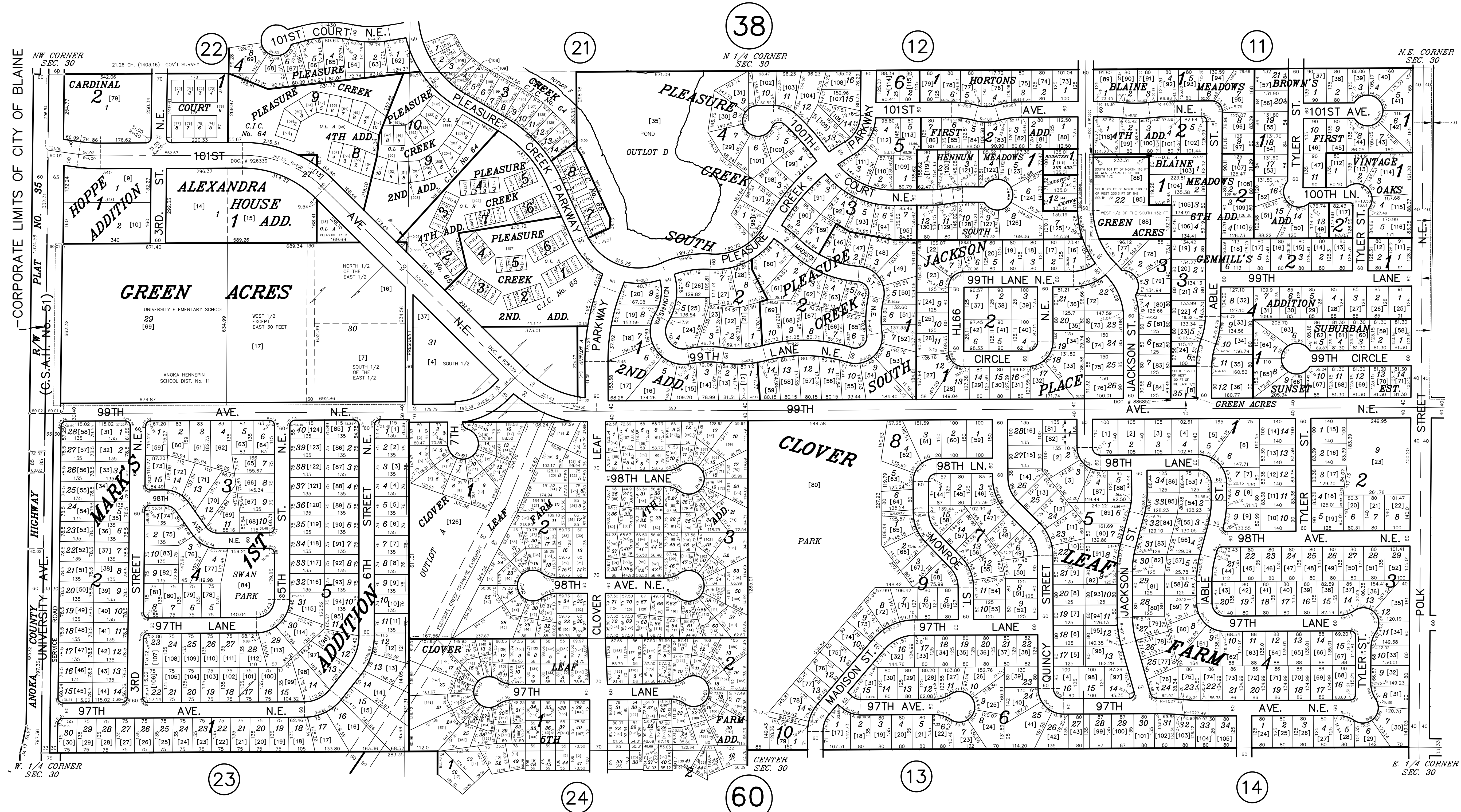


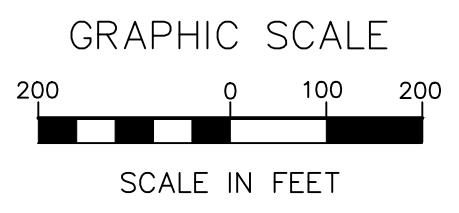
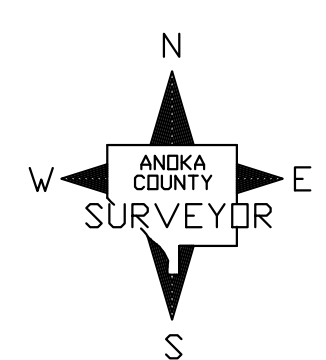
# N 1/2 SECTION 30, T. 31, R. 23

## CITY OF BLAINE



-CORPORATE LIMITS OF CITY OF BLAINE  
 ANOKA COUNTY SURVEYOR'S OFFICE  
 UNIVERSITY AVENUE  
 HIGHWAY AVENUE  
 ANOKA COUNTY SURVEYOR'S OFFICE  
 W 1/4 CORNER SEC. 30

N.E. CORNER SEC. 30  
 N.E. CORNER SEC. 30  
 E 1/4 CORNER SEC. 30  
 E 1/4 CORNER SEC. 30



ANOKA COUNTY SURVEYOR'S OFFICE  
 ROOM 224  
 2100 3RD AVENUE  
 ANOKA, MN 55303  
 (763) 324-3200

QUARTER QUARTER INDEX

22	21	12	11
23	24	13	14
32	31	42	41
33	34	43	44

NORTH HALF OF SECTION  
 SOUTH HALF OF SECTION

PROPERTY IDENTIFICATION NUMBER

Section Township Range Quarter Specific  
 Number Number Number Quarter Parcel  
 XX XX XX XX XXXX  
 SPECIFIC PARCEL NUMBERS ARE IN BRACKETS: [1]  
 EXAMPLE OF PIN NUMBER: 30-31-23-13-0017

THIS IS A COMPILATION OF RECORDS AS THEY APPEAR IN THE ANOKA COUNTY OFFICES AFFECTING THE AREA SHOWN. THIS DRAWING IS TO BE USED ONLY FOR REFERENCE PURPOSES AND THE COUNTY IS NOT RESPONSIBLE FOR ANY INACCURACIES HEREIN CONTAINED.