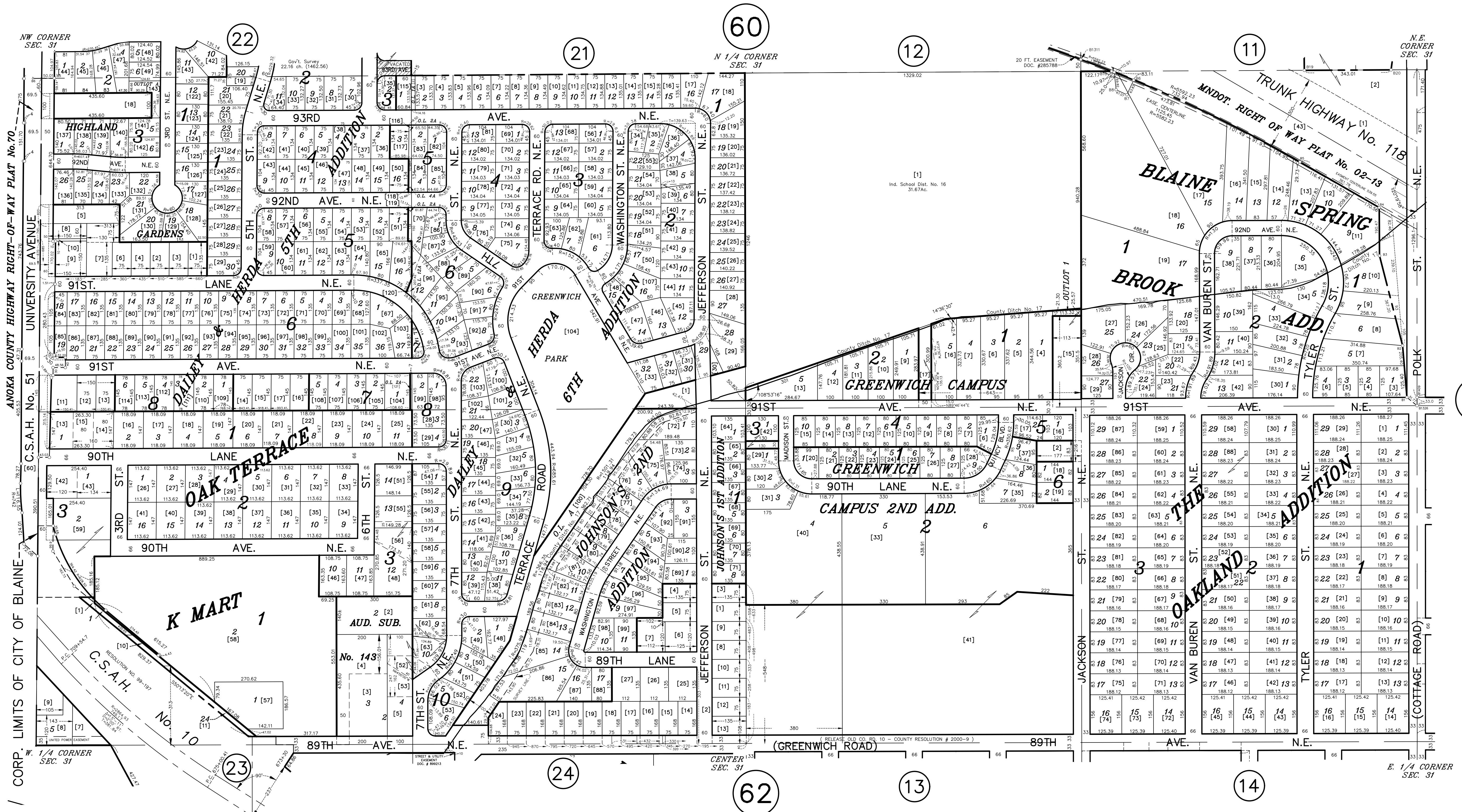


# N 1/2 SECTION 31, T. 31, R. 23

## CITY OF BLAINE



ANOKA COUNTY HIGHWAY RIGHT-OF-WAY PLAT No. 70  
UNIVERSITY AVENUE  
C.S.A.H. No. 51  
CORP. LIMITS OF CITY OF BLAINE  
W. 1/4 CORNER SEC. 31

N.E. CORNER SEC. 31  
E. 1/4 CORNER SEC. 31  
COTTAGE ROAD



ANOKA COUNTY SURVEYOR'S OFFICE  
ROOM 224  
2100 3RD AVENUE  
ANOKA, MN 55303  
(763) 324-3200

QUARTER QUARTER INDEX

22	21	12	11
23	24	13	14
32	31	42	41
33	34	43	44

NORTH HALF OF SECTION  
SOUTH HALF OF SECTION

PROPERTY IDENTIFICATION NUMBER

Section Township Range Quarter Specific  
Number Number Number Quarter Parcel

XX XX XX XX XXXX

SPECIFIC PARCEL NUMBERS ARE IN BRACKETS: [1]  
EXAMPLE OF PIN NUMBER: 31-31-23-13-0041

THIS IS A COMPILATION OF RECORDS AS THEY APPEAR IN THE ANOKA COUNTY OFFICES AFFECTING THE AREA SHOWN. THIS DRAWING IS TO BE USED ONLY FOR REFERENCE PURPOSES AND THE COUNTY IS NOT RESPONSIBLE FOR ANY INACCURACIES HEREIN CONTAINED.