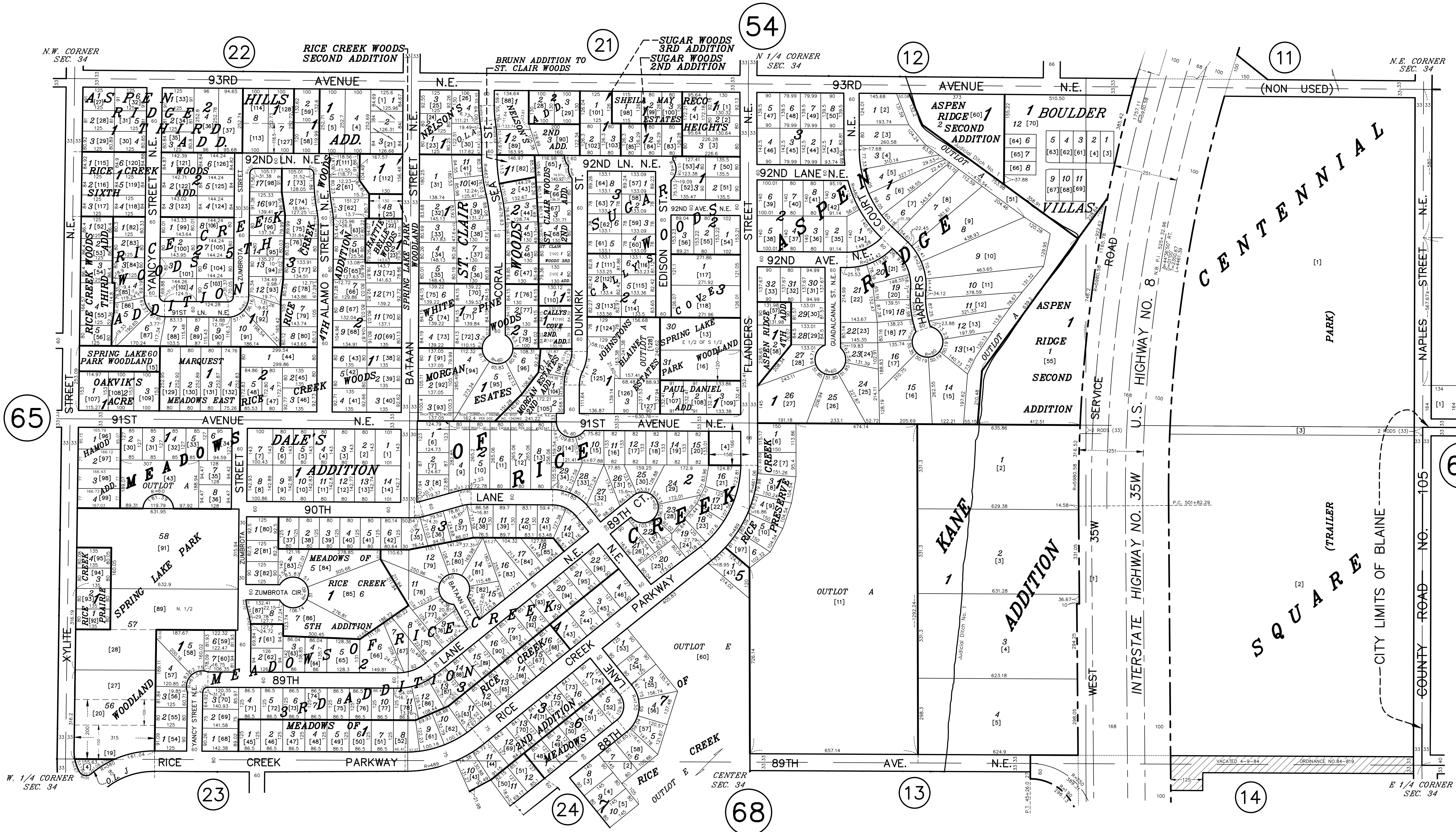


N 1/2 SECTION 34, T. 31, R. 23

CITY OF BLAINE



65

54

22

21

12

11

69

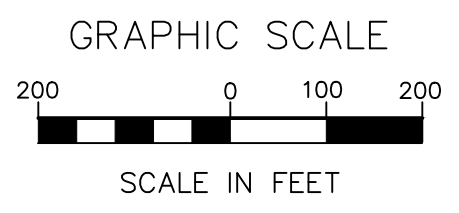
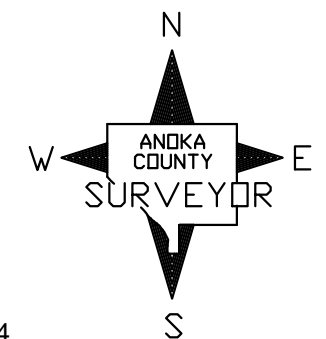
23

24

68

13

14



ANOKA COUNTY
SURVEYOR'S OFFICE
ROOM 224
2100 3RD AVENUE
ANOKA, MN 55303
(763) 324-3200

QUARTER QUARTER INDEX

22	21	12	11
23	24	13	14
NORTH HALF OF SECTION			
32	31	42	41
33	34	43	44
SOUTH HALF OF SECTION			

PROPERTY IDENTIFICATION NUMBER

Section Township Range Quarter Specific
Number Number Number Quarter Parcel

XX XX XX XX XXXX

SPECIFIC PARCEL NUMBERS ARE IN BRACKETS: [1]
EXAMPLE OF PIN NUMBER: 34-31-23-13-005

THIS IS A COMPILATION OF RECORDS AS THEY APPEAR IN THE ANOKA COUNTY OFFICES AFFECTING THE AREA SHOWN. THIS DRAWING IS TO BE USED ONLY FOR REFERENCE PURPOSES AND THE COUNTY IS NOT RESPONSIBLE FOR ANY INACCURACIES HEREIN CONTAINED.