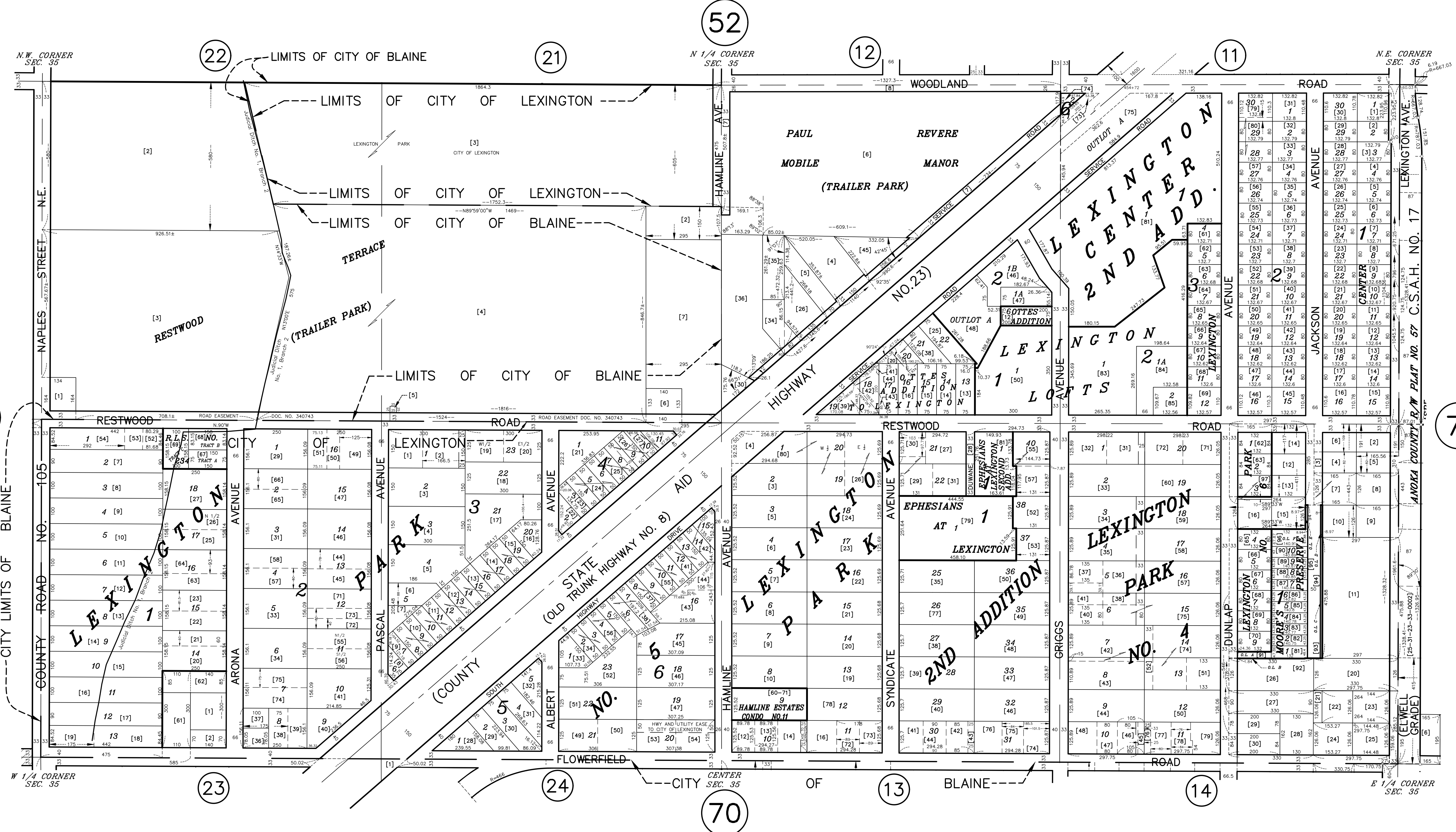


N 1/2 SECTION 35, T. 31, R. 23

CITY OF BLAINE CITY OF LEXINGTON



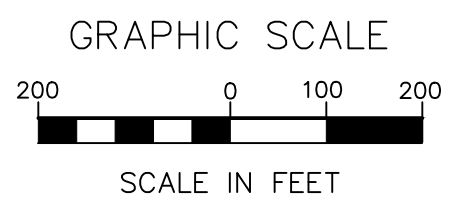
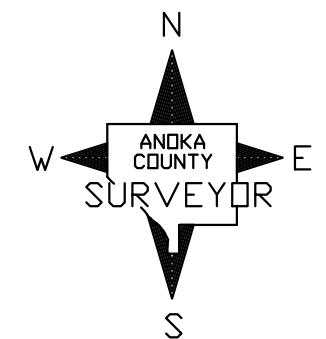
N.W. CORNER SEC. 35

N 1/4 CORNER SEC. 35

N.E. CORNER SEC. 35

W 1/4 CORNER SEC. 35

E 1/4 CORNER SEC. 35



ANOKA COUNTY
SURVEYOR'S OFFICE
ROOM 224
2100 3RD AVENUE
ANOKA, MN 55303
(763) 324-3200

QUARTER QUARTER INDEX

22	21	12	11
23	24	13	14
32	31	42	41
33	34	43	44

NORTH HALF OF SECTION

SOUTH HALF OF SECTION

PROPERTY IDENTIFICATION NUMBER

Section Number Township Number Range Number Quarter Specific Quarter Parcel

XX XX XX XX XXXX

SPECIFIC PARCEL NUMBERS ARE IN BRACKETS: [1]
EXAMPLE OF PIN NUMBER: 35-31-23-13-0018

THIS IS A COMPILATION OF RECORDS AS THEY APPEAR IN THE ANOKA COUNTY OFFICES AFFECTING THE AREA SHOWN. THIS DRAWING IS TO BE USED ONLY FOR REFERENCE PURPOSES AND THE COUNTY IS NOT RESPONSIBLE FOR ANY INACCURACIES HEREIN CONTAINED.