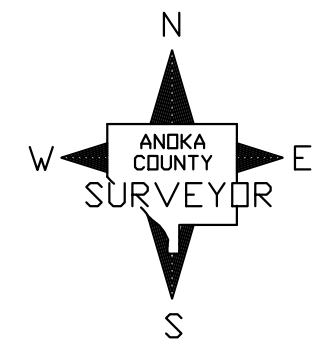
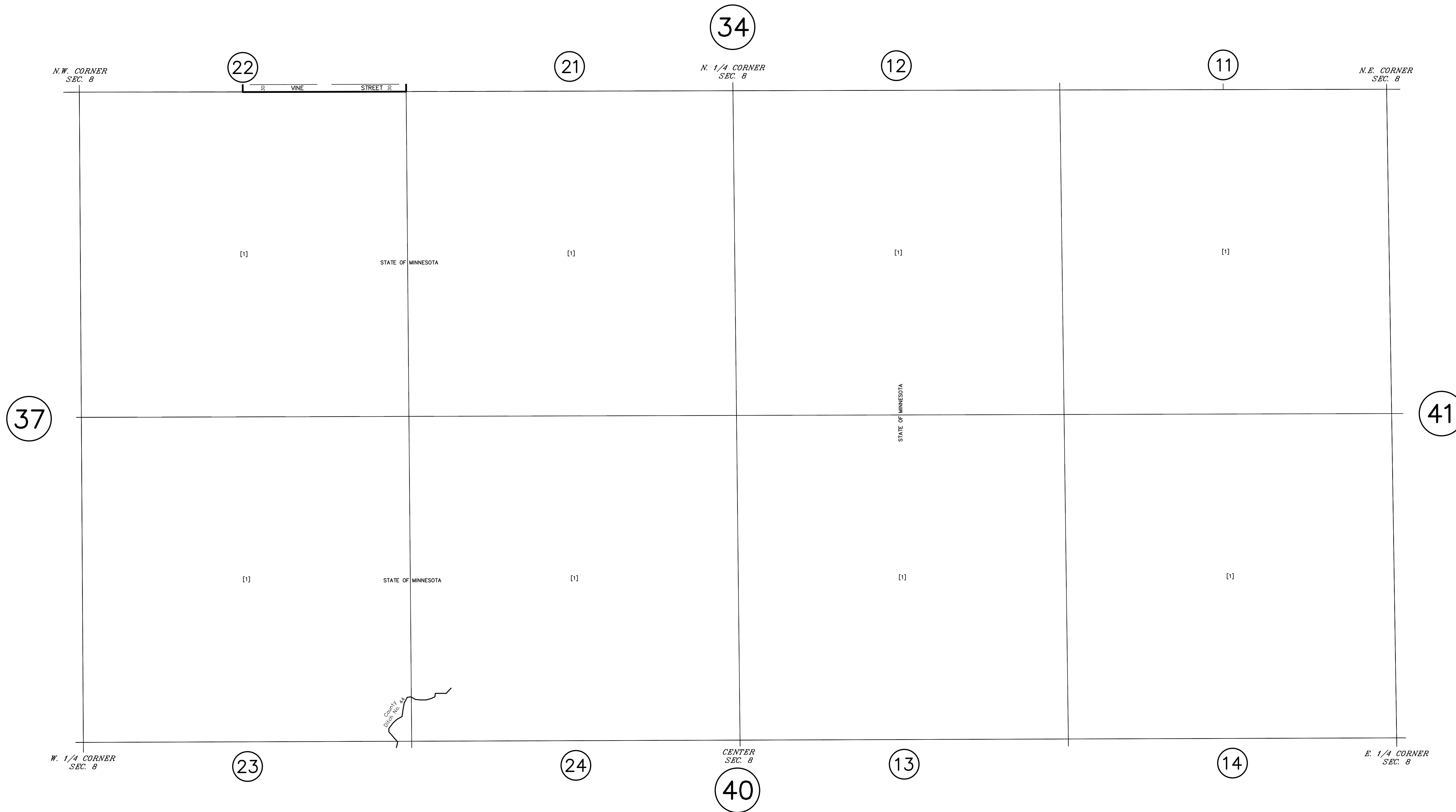


# N 1/2 SECTION 8, T. 32, R. 22

## CITY OF COLUMBUS



ANOKA COUNTY  
 SURVEYOR'S OFFICE  
 ROOM 224  
 2100 3RD AVENUE  
 ANOKA, MN 55303  
 (763) 324-3200

QUARTER QUARTER INDEX

22	21	12	11	} NORTH HALF OF SECTION
23	24	13	14	
32	31	42	41	} SOUTH HALF OF SECTION
33	34	43	44	

PROPERTY IDENTIFICATION NUMBER

Section Township Range Quarter Specific  
 Number Number Number Quarter Parcel  
 XX XX XX XX XXXX  
 SPECIFIC PARCEL NUMBERS ARE IN BRACKETS: [1]  
 EXAMPLE OF PIN NUMBER: 08-32-22-13-0001

THIS IS A COMPILATION OF RECORDS AS THEY APPEAR IN THE ANOKA COUNTY OFFICES AFFECTING THE AREA SHOWN. THIS DRAWING IS TO BE USED ONLY FOR REFERENCE PURPOSES AND THE COUNTY IS NOT RESPONSIBLE FOR ANY INACCURACIES HEREIN CONTAINED.