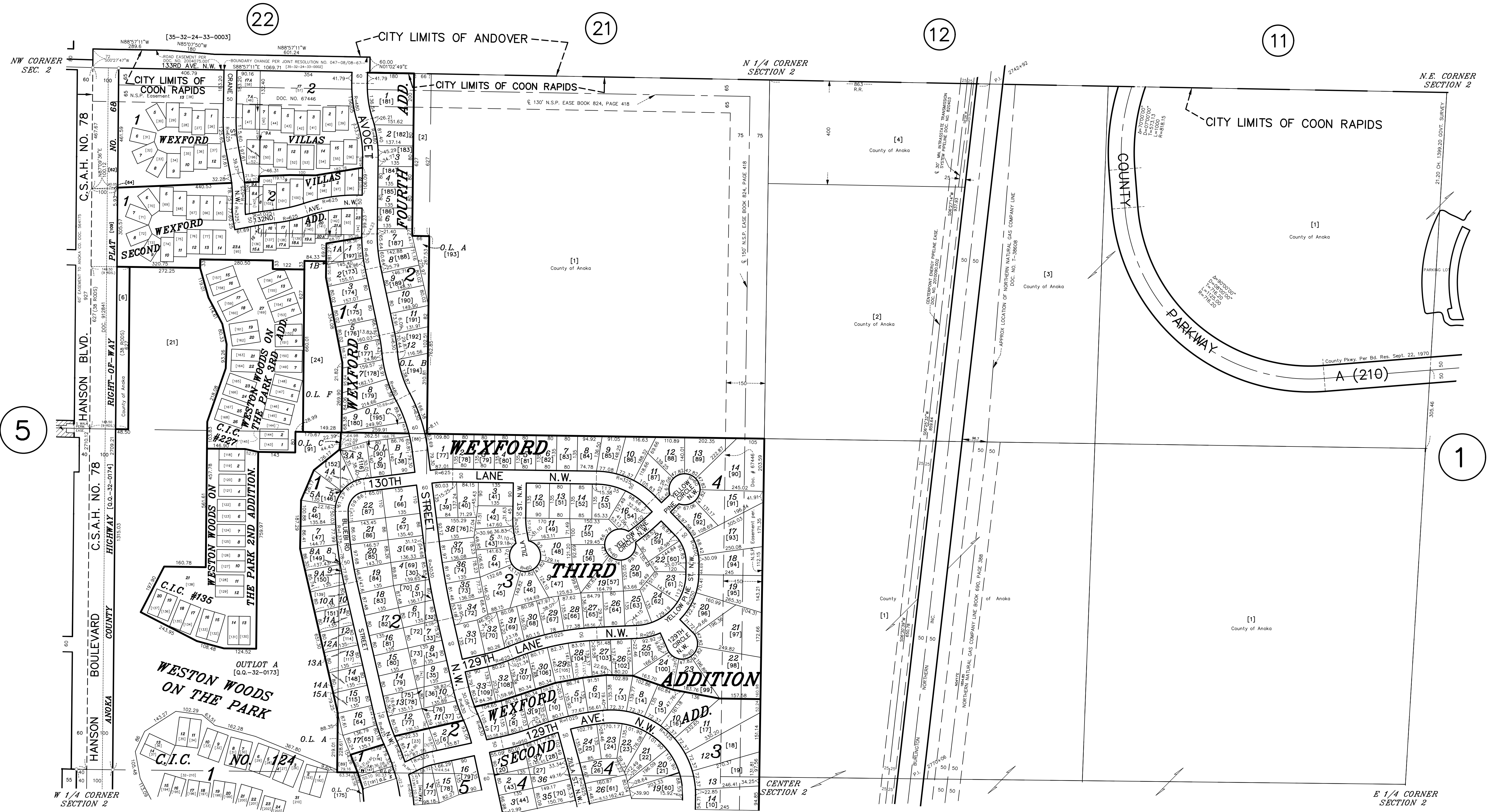


N 1/2 SECTION 2, T. 31, R. 24

CITY OF COON RAPIDS



5

22

21

12

11

1

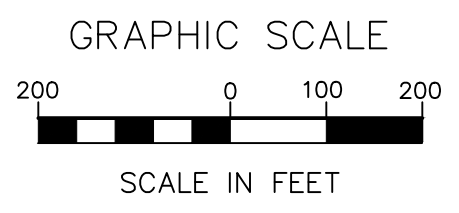
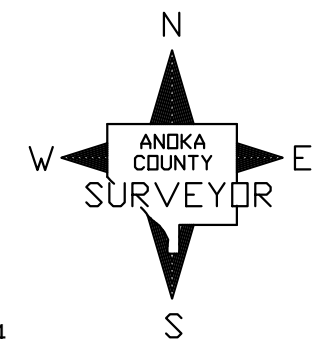
23

24

4

13

14



ANOKA COUNTY
SURVEYOR'S OFFICE
ROOM 224
2100 3RD AVENUE
ANOKA, MN 55303
(763) 324-3200

QUARTER QUARTER INDEX

| | | | | |
|----|----|----|----|--------------------------|
| 22 | 21 | 12 | 11 | NORTH HALF OF SECTION |
| 23 | 24 | 13 | 14 | |
| 32 | 31 | 42 | 41 | SOUTH HALF OF SECTION |
| 33 | 34 | 43 | 44 | |

PROPERTY IDENTIFICATION NUMBER

Section Township Range Quarter Specific
Number Number Number Quarter Parcel

XX XX XX XX XXXX

SPECIFIC PARCEL NUMBERS ARE IN BRACKETS [1]
EXAMPLE OF PIN NUMBER: 02-31-24-13-0001

THIS IS A COMPILATION OF RECORDS AS
THEY APPEAR IN THE ANOKA COUNTY
OFFICES AFFECTING THE AREA SHOWN.
THIS DRAWING IS TO BE USED ONLY FOR
REFERENCE PURPOSES AND THE COUNTY
IS NOT RESPONSIBLE FOR ANY
INACCURACIES HEREIN CONTAINED.