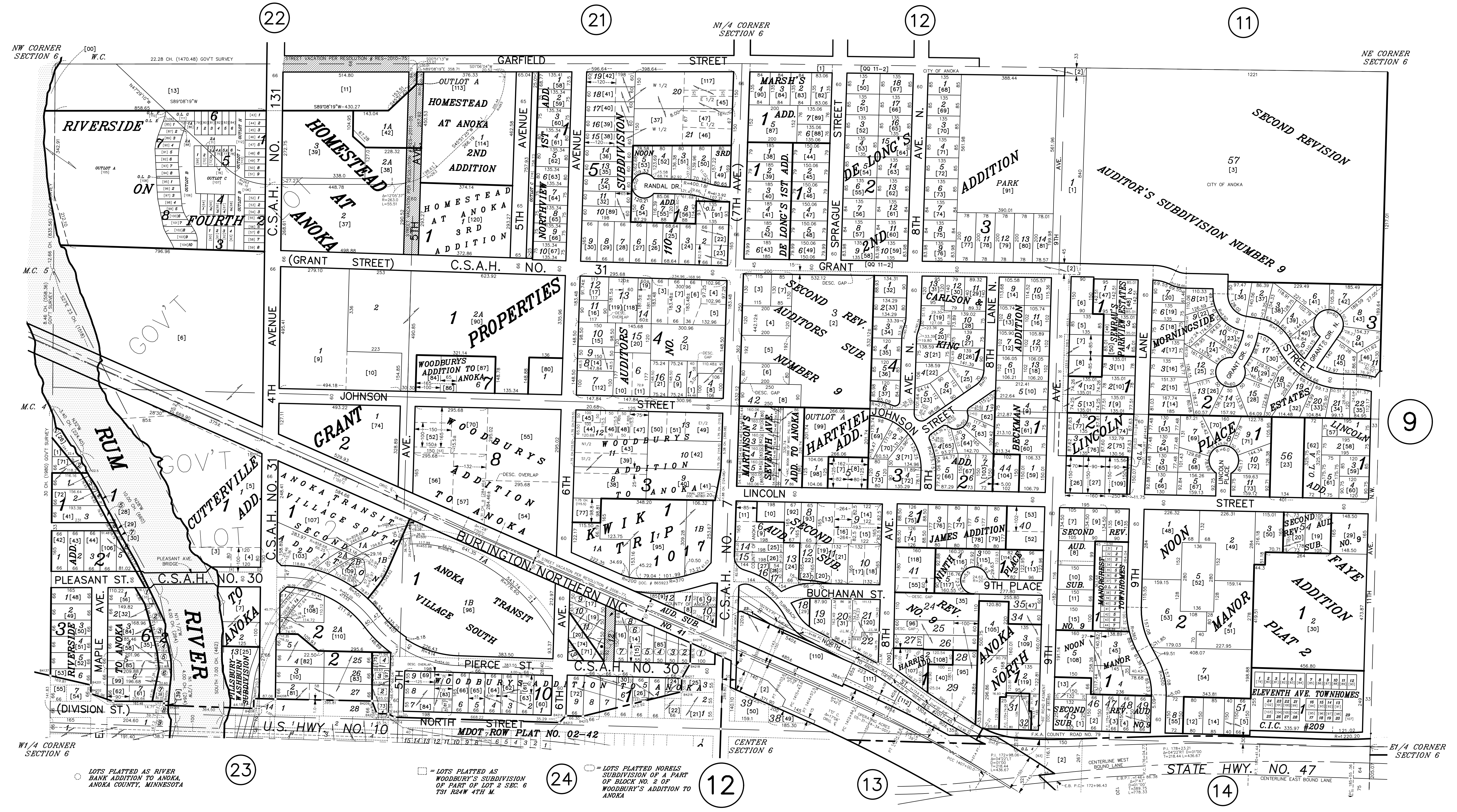


# N 1/2 SECTION 6, T. 31, R. 24

## CITY OF ANOKA



○ = LOTS PLATTED AS RIVER BANK ADDITION TO ANOKA, ANOKA COUNTY, MINNESOTA

□ = LOTS PLATTED AS WOODBURY'S SUBDIVISION OF PART OF LOT 2 SEC. 6 T31 R24W 4TH M.

○ = LOTS PLATTED NOELS SUBDIVISION OF A PART OF BLOCK NO. 2 OF WOODBURY'S ADDITION TO ANOKA

QUARTER QUARTER INDEX

22	21	12	11
23	24	13	14
NORTH HALF OF SECTION			
32	31	42	41
33	34	43	44
SOUTH HALF OF SECTION			

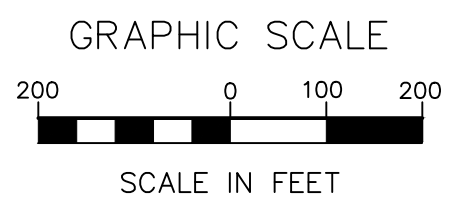
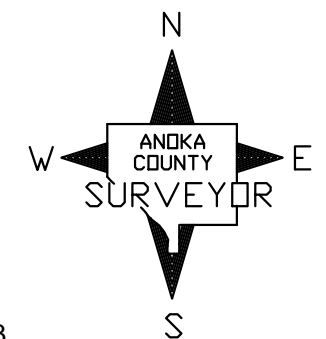
**PROPERTY IDENTIFICATION NUMBER**

Section Township Range Quarter Specific  
Number Number Number Quarter Parcel

XX XX XX XX XXXX

SPECIFIC PARCEL NUMBERS ARE IN BRACKETS: [1]  
EXAMPLE OF PIN NUMBER: 06-31-24-13-0110

THIS IS A COMPILATION OF RECORDS AS THEY APPEAR IN THE ANOKA COUNTY OFFICES AFFECTING THE AREA SHOWN. THIS DRAWING IS TO BE USED ONLY FOR REFERENCE PURPOSES AND THE COUNTY IS NOT RESPONSIBLE FOR ANY INACCURACIES HEREIN CONTAINED.



ANOKA COUNTY SURVEYOR'S OFFICE  
ROOM 224  
2100 3RD AVENUE  
ANOKA, MN 55303  
(763) 324-3200