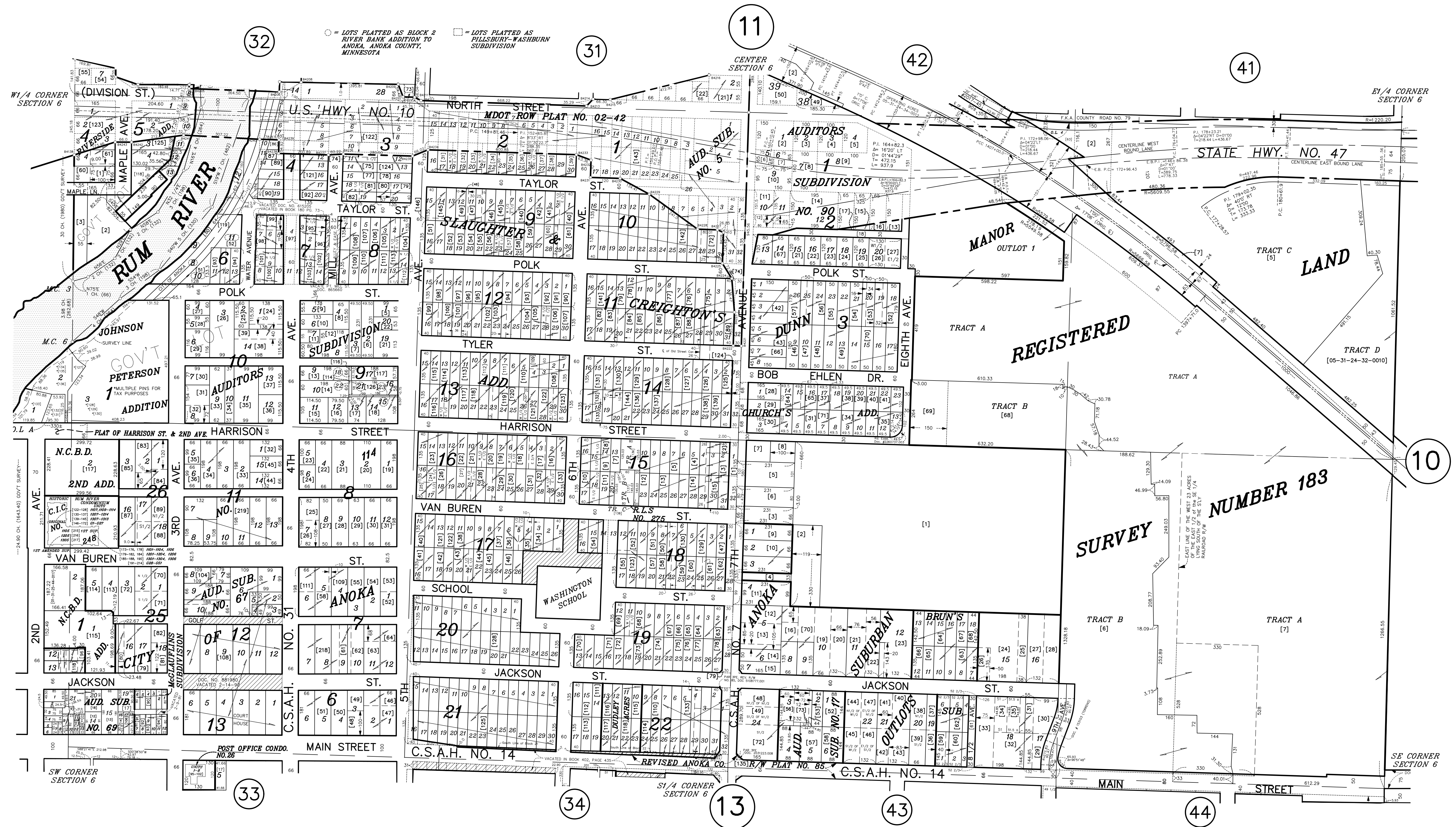


S 1/2 SECTION 6, T. 31, R. 24

CITY OF ANOKA



○ = LOTS PLATTED AS BLOCK 2 RIVER BANK ADDITION TO ANOKA, ANOKA COUNTY, MINNESOTA

□ = LOTS PLATTED AS PILLSBURY-WASHBURN SUBDIVISION



ANOKA COUNTY SURVEYOR'S OFFICE
 ROOM 224
 2100 3RD AVENUE
 ANOKA, MN 55303
 (763) 324-3200

QUARTER QUARTER INDEX

22	21	12	11
23	24	13	14
NORTH HALF OF SECTION			
32	31	42	41
33	34	43	44
SOUTH HALF OF SECTION			

PROPERTY IDENTIFICATION NUMBER

Section Township Range Quarter Specific
 Number Number Number Quarter Parcel

XX XX XX XX XXXX

SPECIFIC PARCEL NUMBERS ARE IN BRACKETS: [1]
 EXAMPLE OF PIN NUMBER: 06-31-24-43-0044

THIS IS A COMPILATION OF RECORDS AS THEY APPEAR IN THE ANOKA COUNTY OFFICES AFFECTING THE AREA SHOWN. THIS DRAWING IS TO BE USED ONLY FOR REFERENCE PURPOSES AND THE COUNTY IS NOT RESPONSIBLE FOR ANY INACCURACIES HEREIN CONTAINED.