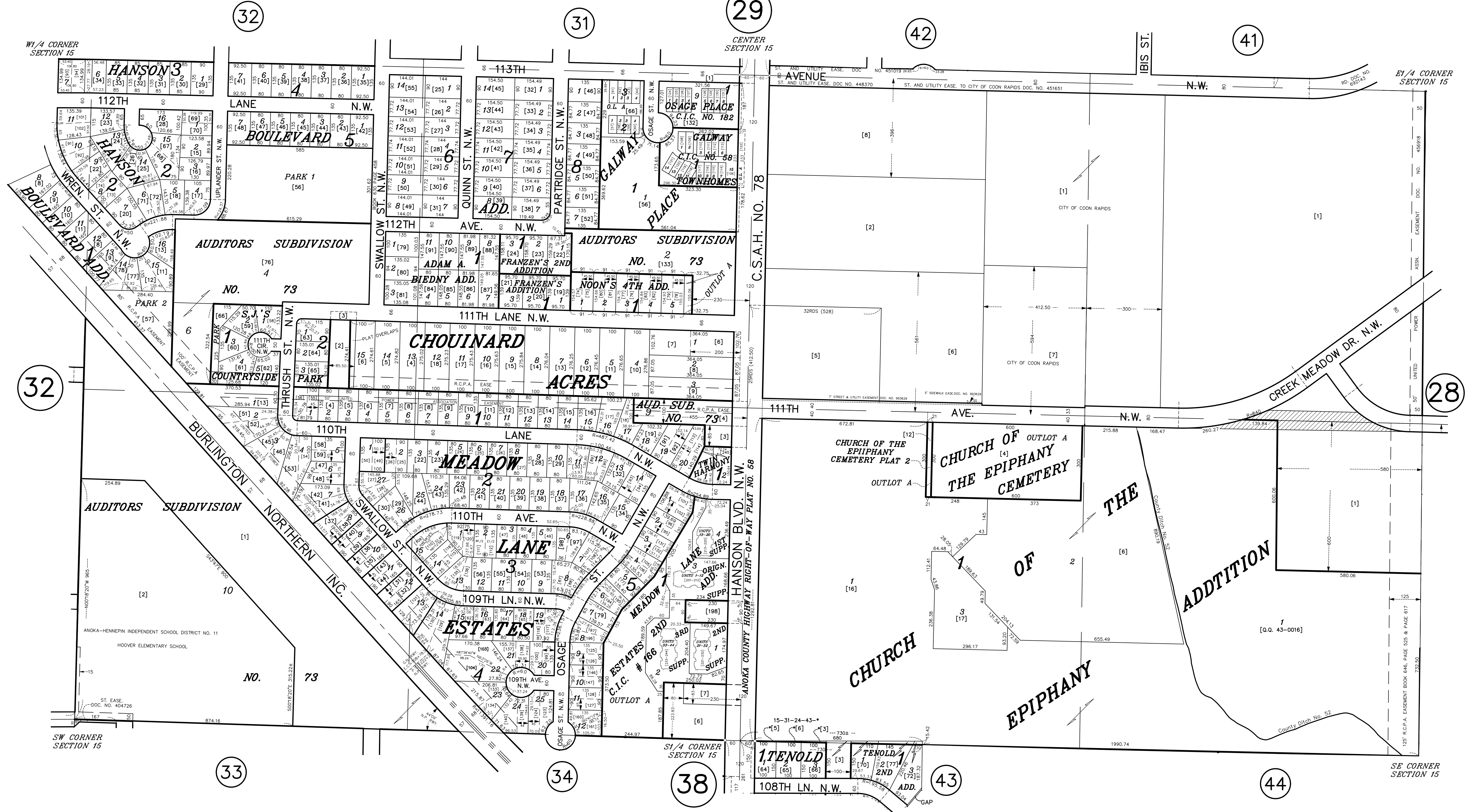


S 1/2 SECTION 15, T. 31, R. 24

CITY OF COON RAPIDS



W 1/4 CORNER SECTION 15

E 1/4 CORNER SECTION 15

32

28

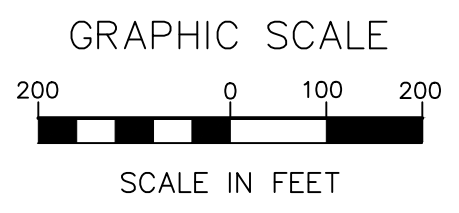
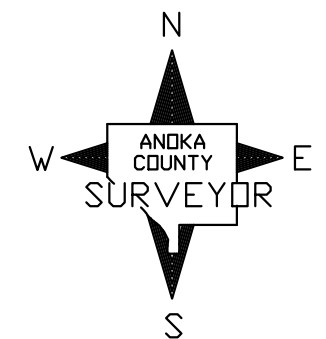
33

34

38

43

44



ANOKA COUNTY
SURVEYOR'S OFFICE
ROOM 224
2100 3RD AVENUE
ANOKA, MN 55303
(763) 324-3200

QUARTER QUARTER INDEX

22	21	12	11
23	24	13	14
NORTH HALF OF SECTION			
32	31	42	41
33	34	43	44
SOUTH HALF OF SECTION			

PROPERTY IDENTIFICATION NUMBER

Section Number	Township Number	Range Number	Quarter	Specific Quarter	Parcel
XX	XX	XX	XX	XXXX	

SPECIFIC PARCEL NUMBERS ARE IN BRACKETS: [1]
EXAMPLE OF PIN NUMBER: 15-31-24-43-0017

THIS IS A COMPILATION OF RECORDS AS THEY APPEAR IN THE ANOKA COUNTY OFFICES AFFECTING THE AREA SHOWN. THIS DRAWING IS TO BE USED ONLY FOR REFERENCE PURPOSES AND THE COUNTY IS NOT RESPONSIBLE FOR ANY INACCURACIES HEREIN CONTAINED.