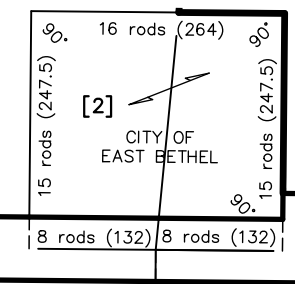
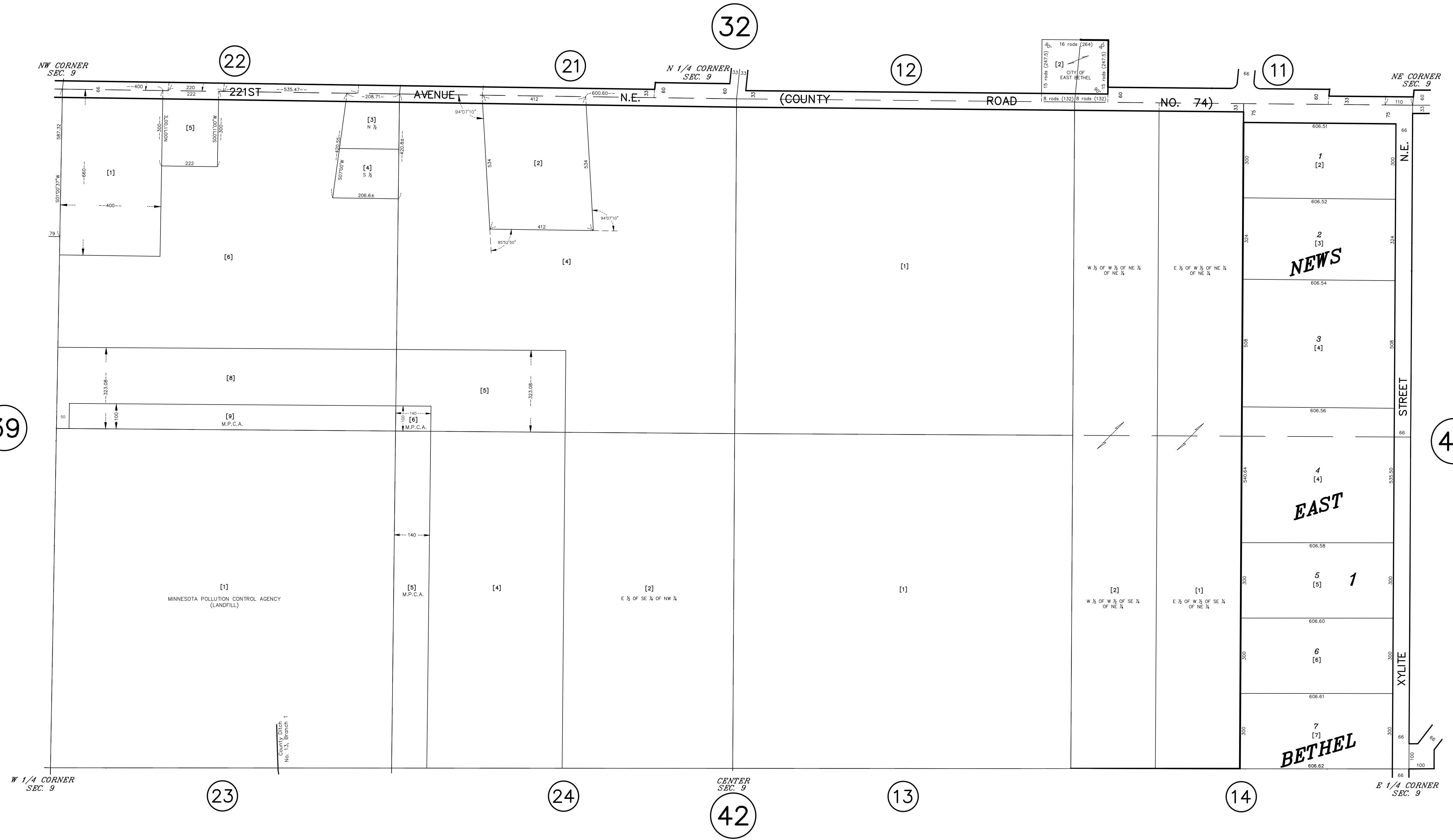


# N 1/2 SECTION 9, T. 33, R. 23

CITY OF EAST BETHEL



39

43

32

42

NW CORNER SEC. 9

NE CORNER SEC. 9

CENTER SEC. 9

E 1/4 CORNER SEC. 9

22

21

12

11

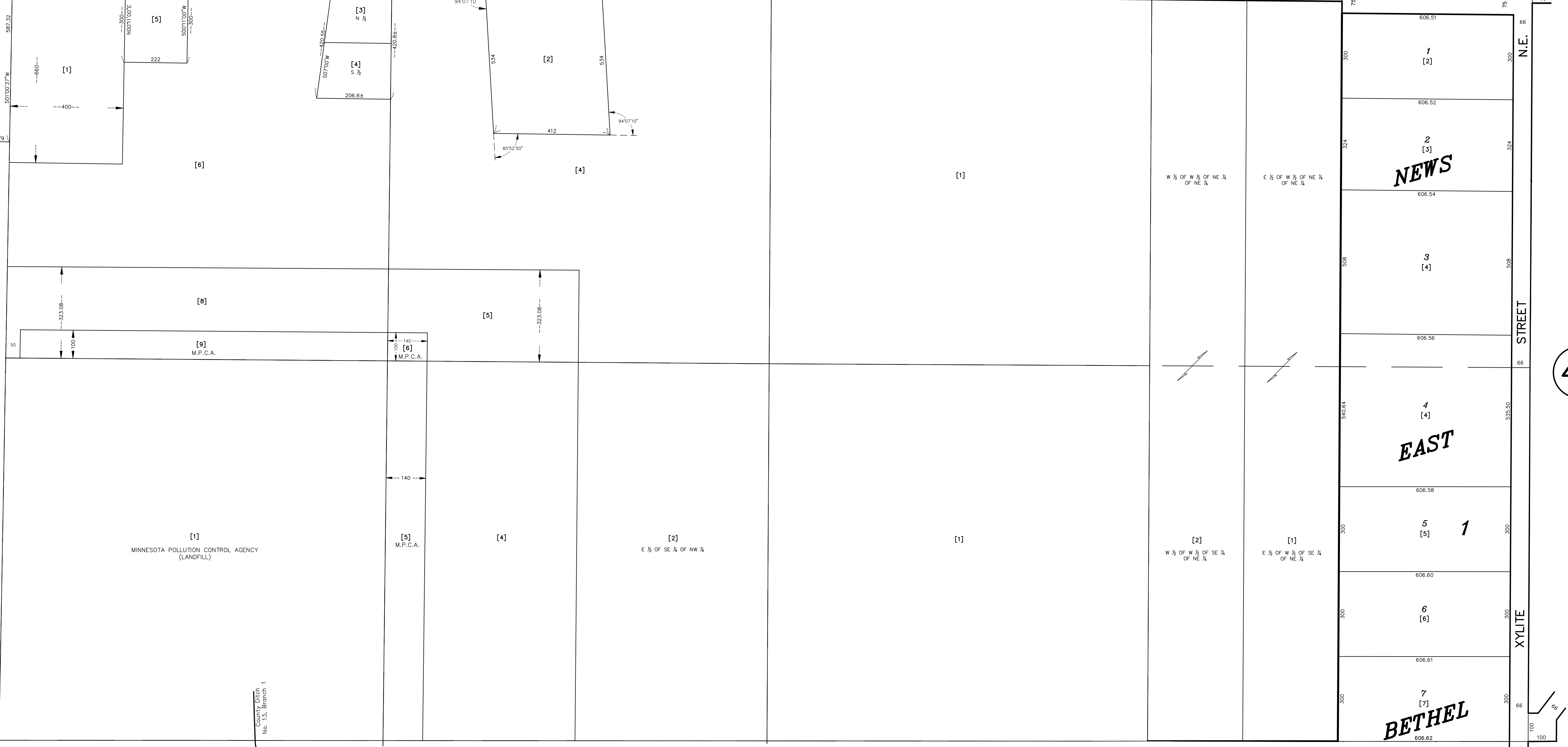
23

24

13

14

221ST AVENUE N.E. (COUNTY ROAD NO. 74) XYLITE STREET



MINNESOTA POLLUTION CONTROL AGENCY (LANDFILL)

M.P.C.A.

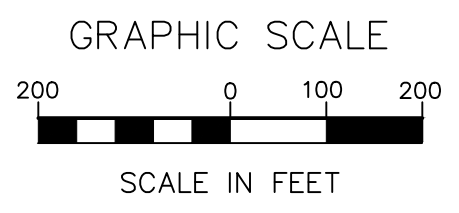
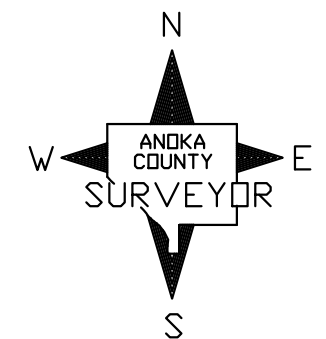
E 1/2 OF SE 1/4 OF NW 1/4

W 1/2 OF W 1/2 OF SE 1/4 OF NE 1/4

E 1/2 OF W 1/2 OF SE 1/4 OF NE 1/4

W 1/4 CORNER SEC. 9

E 1/4 CORNER SEC. 9



ANOKA COUNTY SURVEYOR'S OFFICE  
ROOM 224  
2100 3RD AVENUE  
ANOKA, MN 55303  
(763) 324-3200

QUARTER QUARTER INDEX

22	21	12	11
23	24	13	14
32	31	42	41
33	34	43	44

PROPERTY IDENTIFICATION NUMBER

Section Number	Township Number	Range Number	Quarter Quarter	Specific Parcel
XX	XX	XX	XX	XXXX

SPECIFIC PARCEL NUMBERS ARE IN BRACKETS: [1]  
EXAMPLE OF PIN NUMBER: 09-33-23-14-0007

THIS IS A COMPILATION OF RECORDS AS THEY APPEAR IN THE ANOKA COUNTY OFFICES AFFECTING THE AREA SHOWN. THIS DRAWING IS TO BE USED ONLY FOR REFERENCE PURPOSES AND THE COUNTY IS NOT RESPONSIBLE FOR ANY INACCURACIES HEREIN CONTAINED.