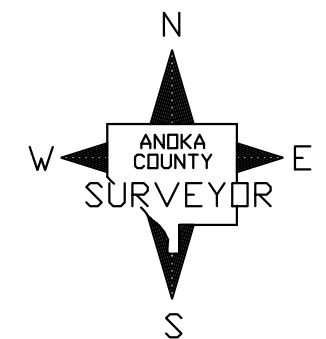
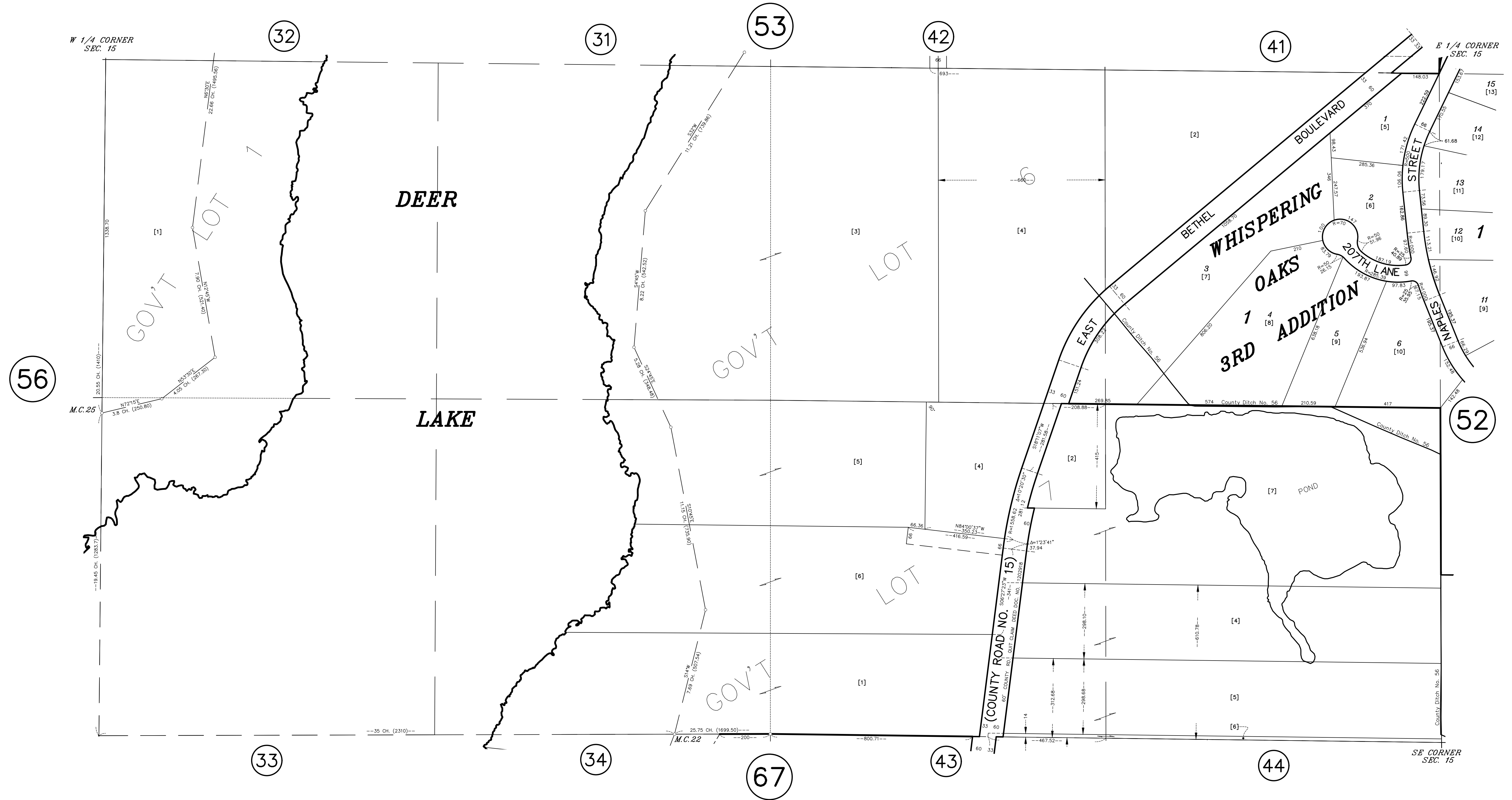


S 1/2 SECTION 15, T. 33, R. 23

CITY OF EAST BETHEL



ANOKA COUNTY
SURVEYOR'S OFFICE
ROOM 224
2100 3RD AVENUE
ANOKA, MN 55303
(763) 324-3200

QUARTER QUARTER INDEX

22	21	12	11	} NORTH HALF OF SECTION
23	24	13	14	
32	31	42	41	} SOUTH HALF OF SECTION
33	34	43	44	

PROPERTY IDENTIFICATION NUMBER
 Section Township Range Quarter Specific
 Number Number Number Quarter Parcel
 XX XX XX XX XXXX
 SPECIFIC PARCEL NUMBERS ARE IN BRACKETS: [1]
 EXAMPLE OF PIN NUMBER: 15-33-23-44-0004

THIS IS A COMPILATION OF RECORDS AS THEY APPEAR IN THE ANOKA COUNTY OFFICES AFFECTING THE AREA SHOWN. THIS DRAWING IS TO BE USED ONLY FOR REFERENCE PURPOSES AND THE COUNTY IS NOT RESPONSIBLE FOR ANY INACCURACIES HEREIN CONTAINED.