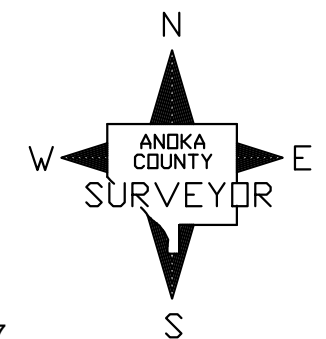
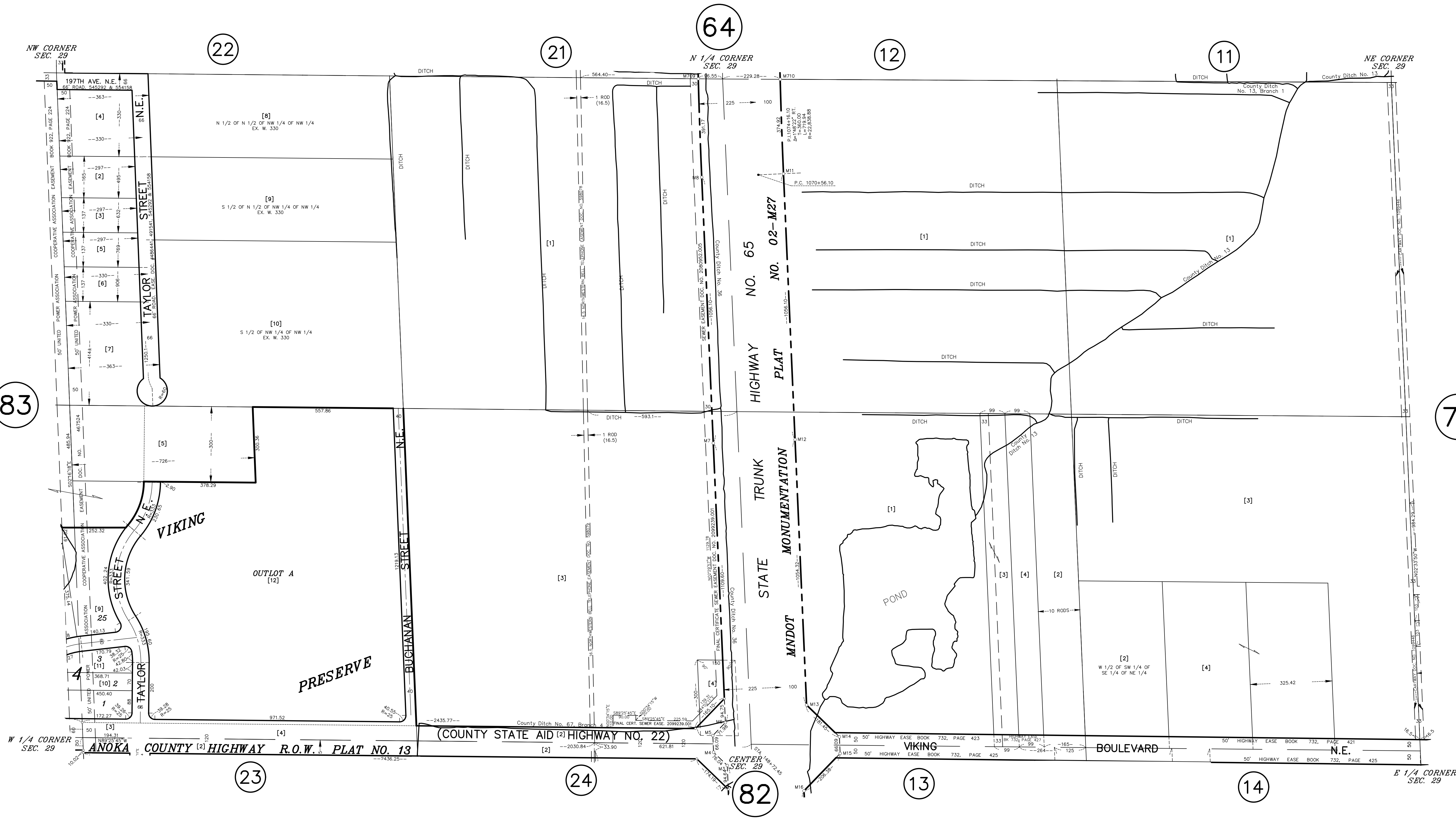


# N 1/2 SECTION 29, T. 33, R. 23

CITY OF EAST BETHEL



ANOKA COUNTY  
SURVEYOR'S OFFICE  
ROOM 224  
2100 3RD AVENUE  
ANOKA, MN 55303  
(763) 324-3200

QUARTER QUARTER INDEX

22	21	12	11	NORTH HALF OF SECTION
23	24	13	14	
32	31	42	41	SOUTH HALF OF SECTION
33	34	43	44	

PROPERTY IDENTIFICATION NUMBER

Section Township Range Quarter Specific  
Number Number Number Quarter Parcel  
XX XX XX XX XXXX

SPECIFIC PARCEL NUMBERS ARE IN BRACKETS: [1]  
EXAMPLE OF PIN NUMBER: 29-33-23-14-0002

THIS IS A COMPILATION OF RECORDS AS THEY APPEAR IN THE ANOKA COUNTY OFFICES AFFECTING THE AREA SHOWN. THIS DRAWING IS TO BE USED ONLY FOR REFERENCE PURPOSES AND THE COUNTY IS NOT RESPONSIBLE FOR ANY INACCURACIES HEREIN CONTAINED.