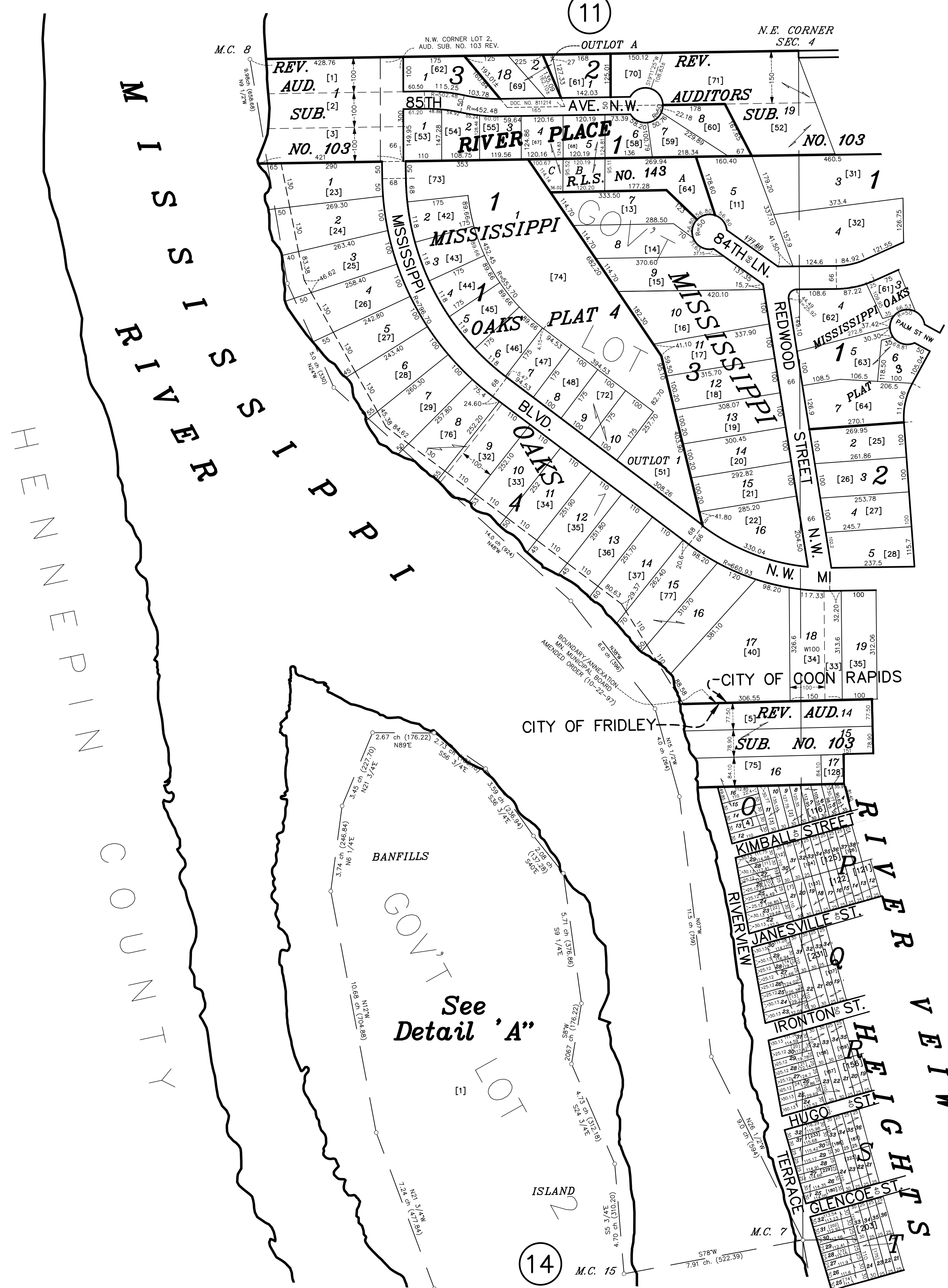
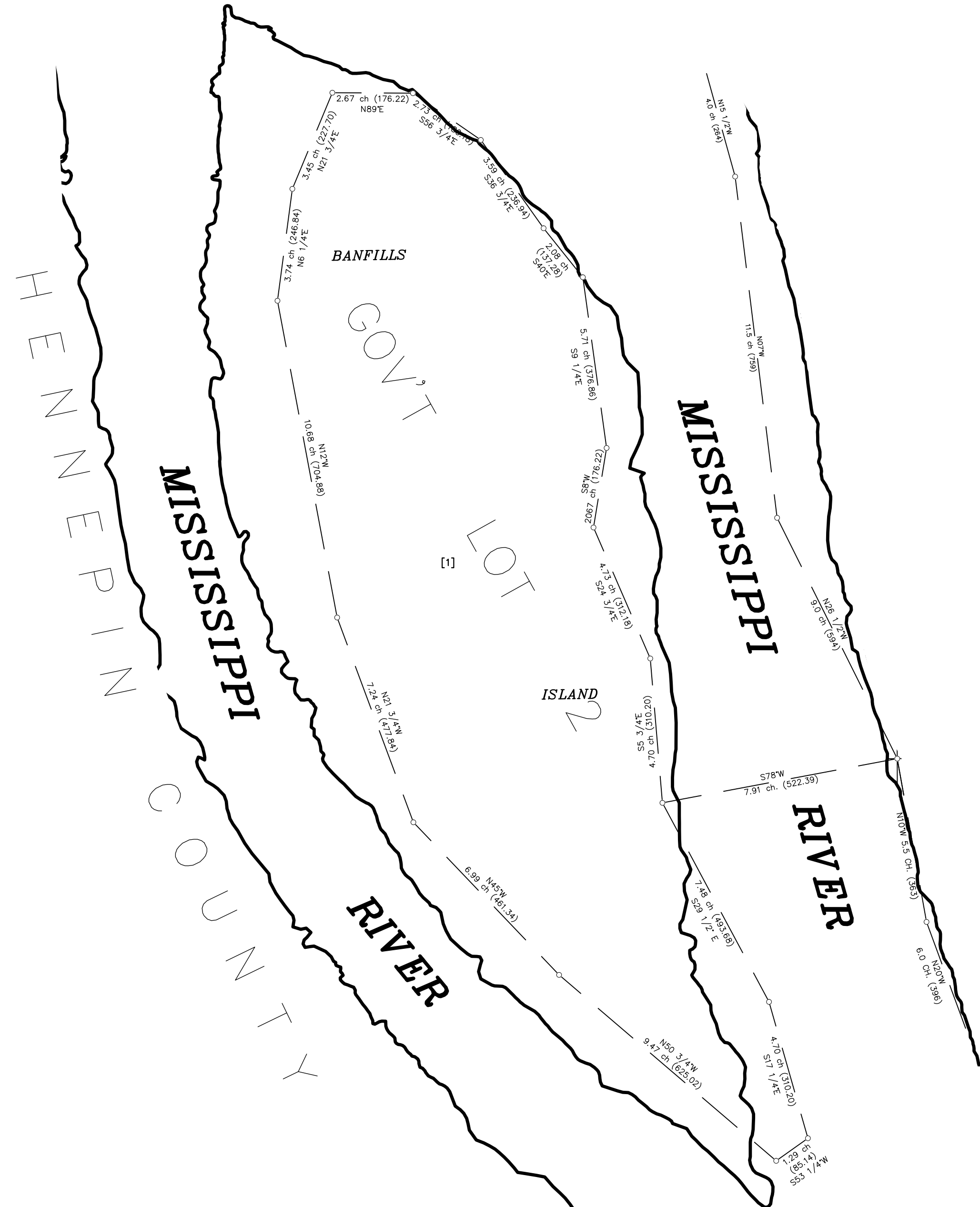


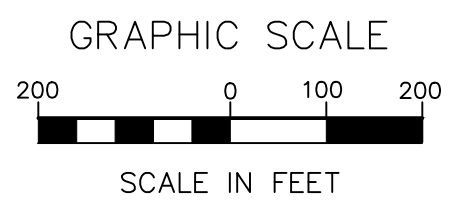
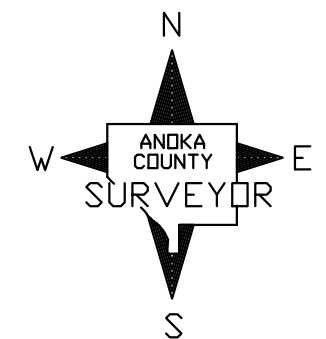
SECTION 4, T. 30, R. 24

CITY OF COON RAPIDS
CITY OF FRIDLEY

Detail 'A'



See
Detail 'A'



ANOKA COUNTY
SURVEYOR'S OFFICE
ROOM 224
2100 3RD AVENUE
ANOKA, MN 55303
(763) 324-3200

QUARTER QUARTER INDEX

| | | | | |
|----|----|----|----|--------------------------|
| 22 | 21 | 12 | 11 | NORTH HALF OF SECTION |
| 23 | 24 | 13 | 14 | |
| 32 | 31 | 42 | 41 | SOUTH HALF OF SECTION |
| 33 | 34 | 43 | 44 | |

PROPERTY IDENTIFICATION NUMBER

Section Township Range Quarter Specific
Number Number Number Quarter Parcel
XX XX XX XX XXXX

SPECIFIC PARCEL NUMBERS ARE IN BRACKETS: [1]
EXAMPLE OF PIN NUMBER: 04-30-24-11-0058

THIS IS A COMPILATION OF RECORDS AS THEY APPEAR IN THE ANOKA COUNTY OFFICES AFFECTING THE AREA SHOWN. THIS DRAWING IS TO BE USED ONLY FOR REFERENCE PURPOSES AND THE COUNTY IS NOT RESPONSIBLE FOR ANY INACCURACIES HEREIN CONTAINED.