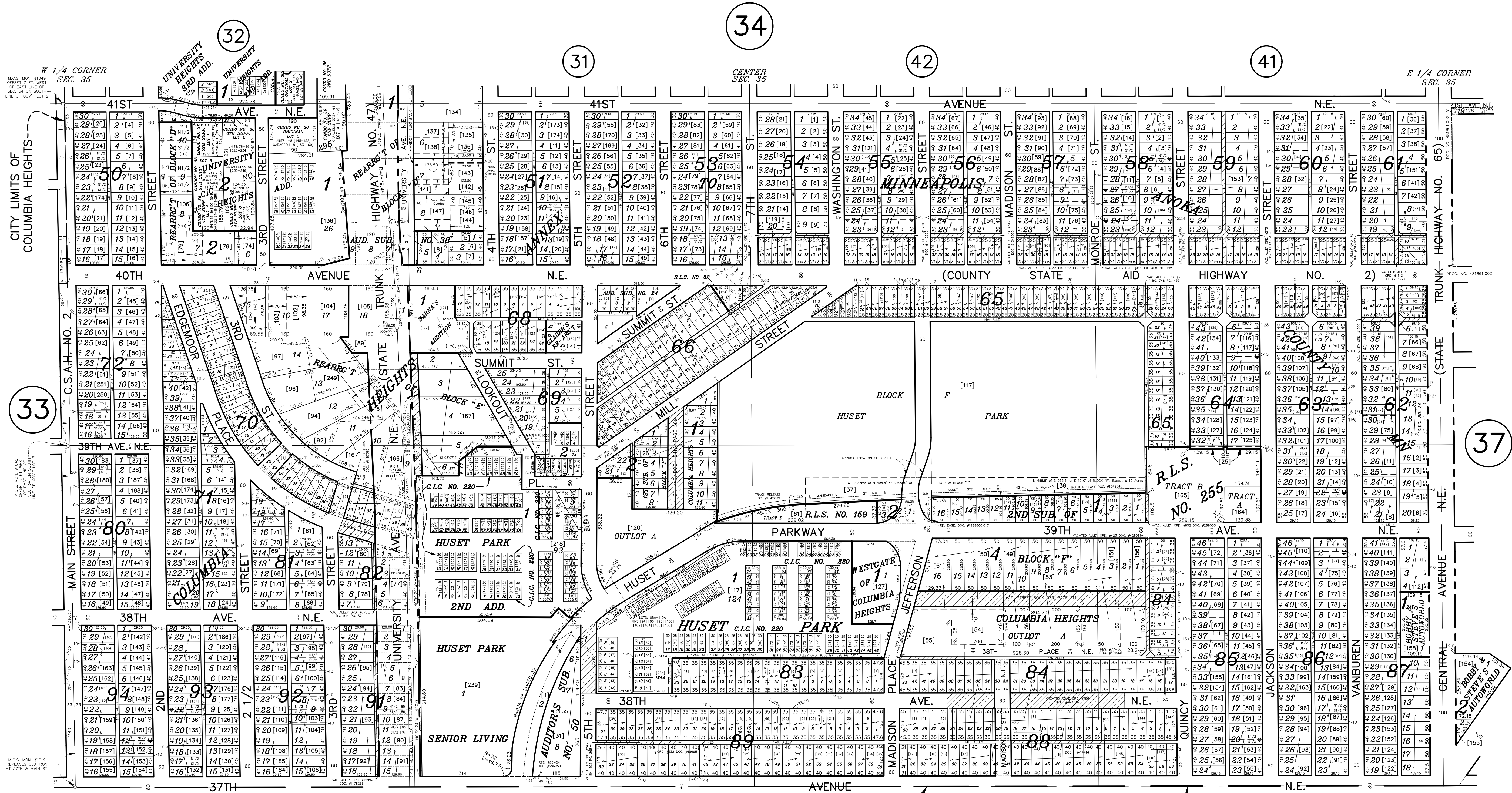


# S 1/2 SECTION 35, T. 30, R. 24

## CITY OF COLUMBIA HEIGHTS



33

34

31

42

41

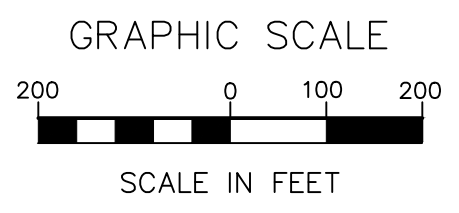
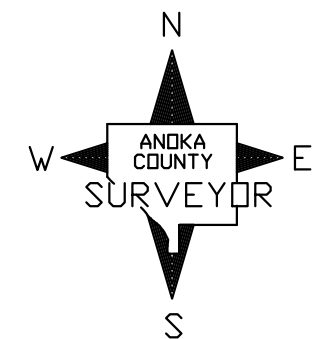
37

33

34

43

44



ANOKA COUNTY SURVEYOR'S OFFICE  
 ROOM 224  
 2100 3RD AVENUE  
 ANOKA, MN 55303  
 (763) 324-3200

### QUARTER QUARTER INDEX

22	21	12	11
23	24	13	14
32	31	42	41
33	34	43	44

NORTH HALF OF SECTION

SOUTH HALF OF SECTION

### PROPERTY IDENTIFICATION NUMBER

Section Township Range Quarter Specific  
 Number Number Number Quarter Parcel

XX XX XX XX XXXX

SPECIFIC PARCEL NUMBERS ARE IN BRACKETS: [1]  
 EXAMPLE OF PIN NUMBER: 35-30-24-43-0014

THIS IS A COMPILATION OF RECORDS AS THEY APPEAR IN THE ANOKA COUNTY OFFICES AFFECTING THE AREA SHOWN. THIS DRAWING IS TO BE USED ONLY FOR REFERENCE PURPOSES AND THE COUNTY IS NOT RESPONSIBLE FOR ANY INACCURACIES HEREIN CONTAINED.