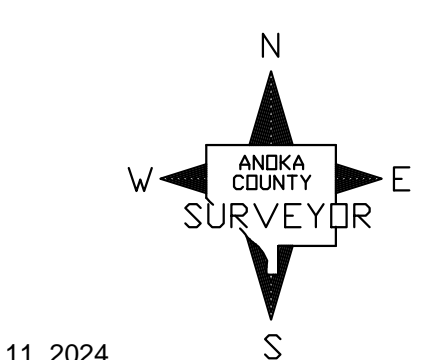
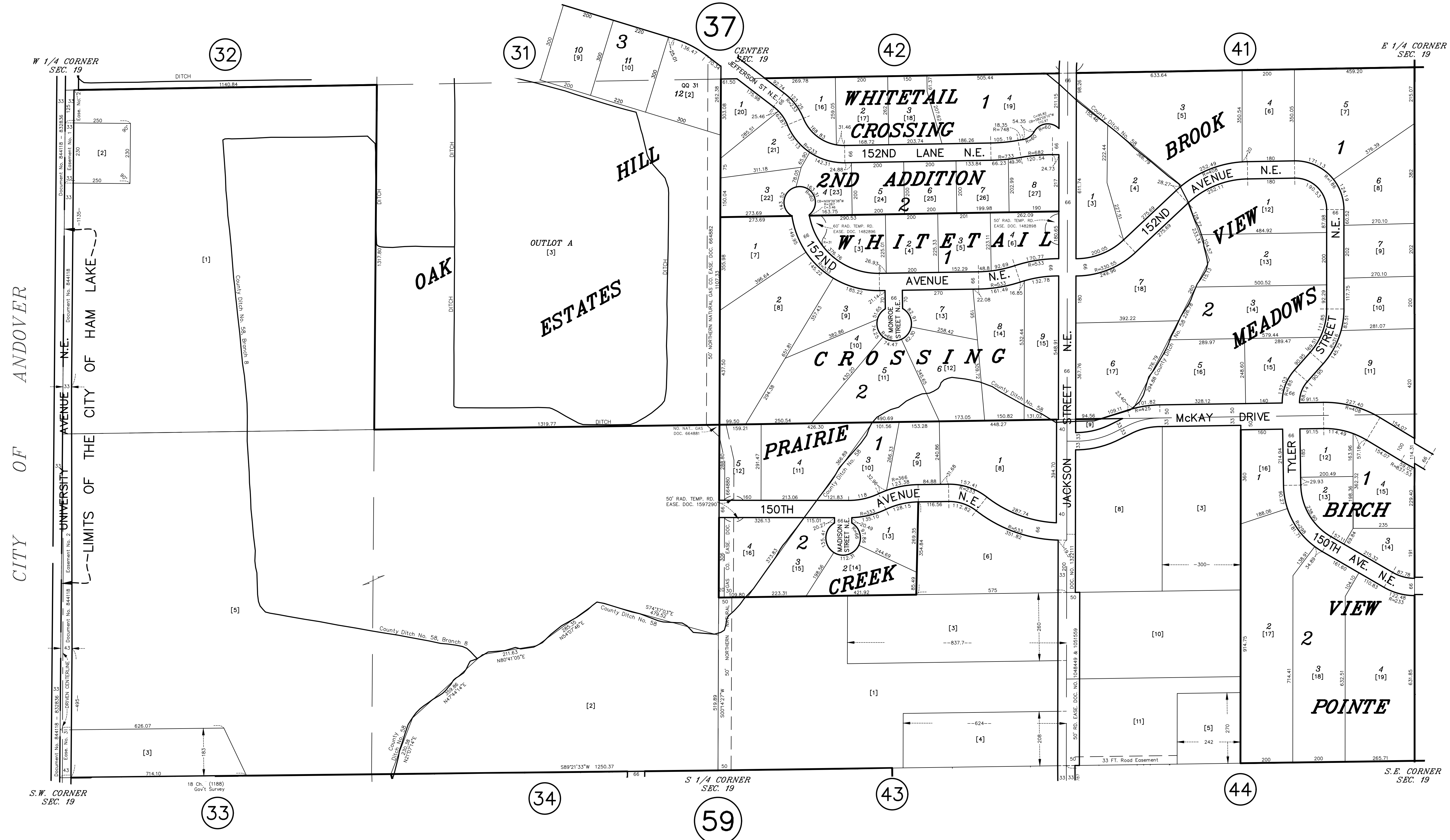


S 1/2 SECTION 19, T. 32, R. 23

CITY OF HAM LAKE



ANOKA COUNTY
SURVEYOR'S OFFICE
ROOM 224
2100 3RD AVENUE
ANOKA, MN 55303
(763) 324-3200

QUARTER QUARTER INDEX

| | | | |
|----|----|----|----|
| 22 | 21 | 12 | 11 |
| 23 | 24 | 13 | 14 |
| 32 | 31 | 42 | 41 |
| 33 | 34 | 43 | 44 |

NORTH HALF OF SECTION

SOUTH HALF OF SECTION

PROPERTY IDENTIFICATION NUMBER

| Section Number | Township Number | Range Number | Quarter Quarter | Specific Parcel |
|----------------|-----------------|--------------|-----------------|-----------------|
| XX | XX | XX | XX | XXXX |

SPECIFIC PARCEL NUMBERS ARE IN BRACKETS: [1]
EXAMPLE OF PIN NUMBER: 19-32-23-43-0015

THIS IS A COMPILATION OF RECORDS AS THEY APPEAR IN THE ANOKA COUNTY OFFICES AFFECTING THE AREA SHOWN. THIS DRAWING IS TO BE USED ONLY FOR REFERENCE PURPOSES AND THE COUNTY IS NOT RESPONSIBLE FOR ANY INACCURACIES HEREIN CONTAINED.