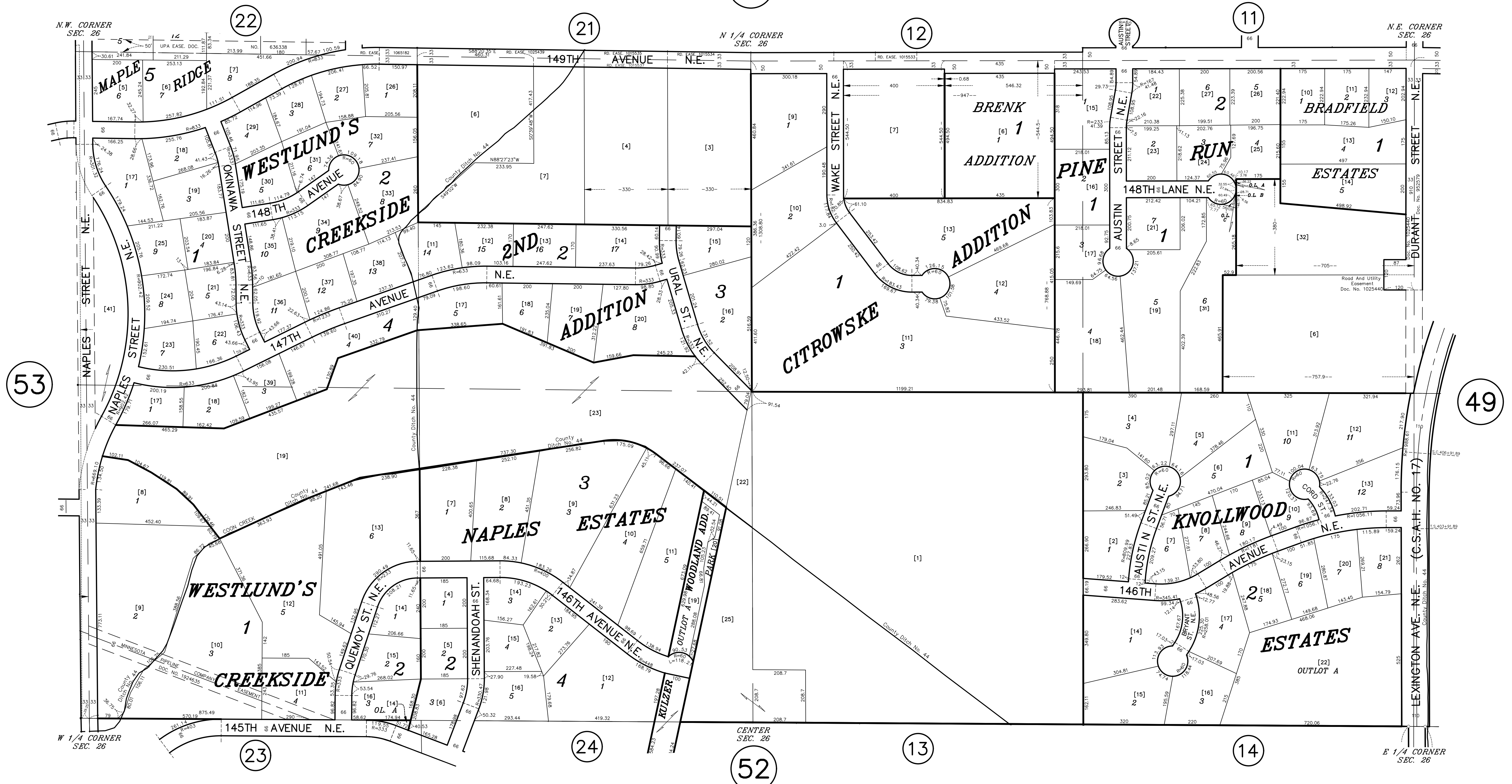


N 1/2 SECTION 26, T. 32, R. 23

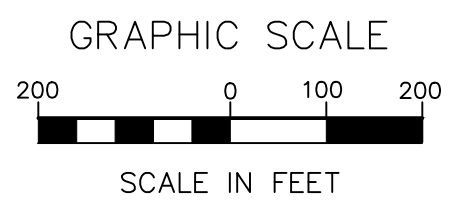
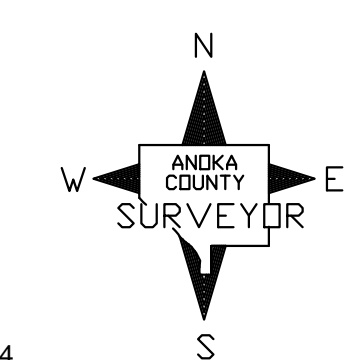
CITY OF HAM LAKE

46



53

49



ANOKA COUNTY
SURVEYOR'S OFFICE
ROOM 224
2100 3RD AVENUE
ANOKA, MN 55303
(763) 324-3200

QUARTER QUARTER INDEX

22	21	12	11
23	24	13	14
}			
NORTH HALF OF SECTION			
}			
SOUTH HALF OF SECTION			
32	31	42	41
33	34	43	44

PROPERTY IDENTIFICATION NUMBER

Section Township Range Quarter Specific
Number Number Number Quarter Parcel

XX XX XX XX XXXX

SPECIFIC PARCEL NUMBERS ARE IN BRACKETS: [1]
EXAMPLE OF PIN NUMBER: 26-32-23-14-0016

THIS IS A COMPILATION OF RECORDS AS THEY APPEAR IN THE ANOKA COUNTY OFFICES AFFECTING THE AREA SHOWN. THIS DRAWING IS TO BE USED ONLY FOR REFERENCE PURPOSES AND THE COUNTY IS NOT RESPONSIBLE FOR ANY INACCURACIES HEREIN CONTAINED.