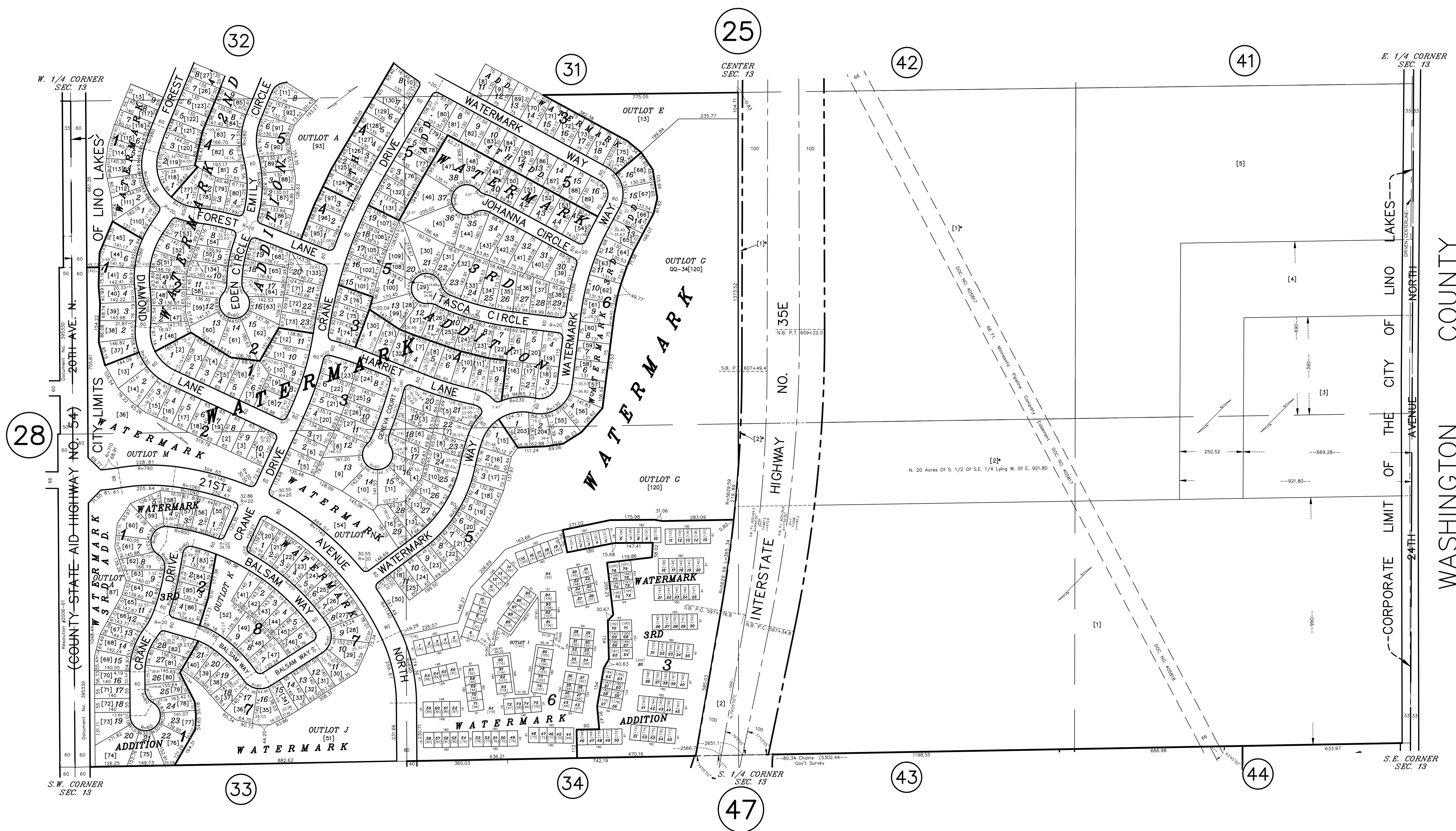


# S 1/2 SECTION 13, T. 31, R. 22

CITY OF LINO LAKES



28

32

25

31

42

41

33

34

47

43

44

W. 1/4 CORNER SEC. 13

COUNTY STATE AID HIGHWAY NO. 54  
20TH AVE. N.  
CITY LIMITS OF LINO LAKES

S.W. CORNER SEC. 13

CENTER SEC. 13

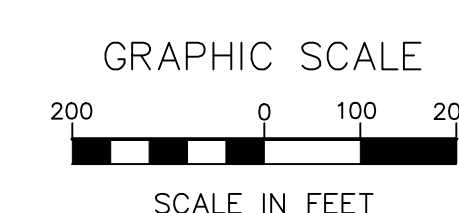
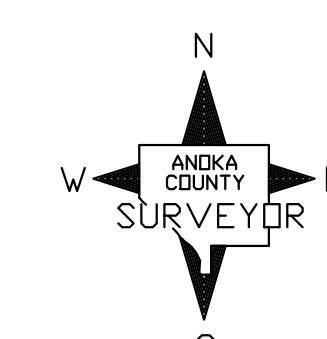
NO. 35E  
HIGHWAY  
INTERSTATE

S. 1/4 CORNER SEC. 13

E. 1/4 CORNER SEC. 13

CORPORATE LIMIT OF THE CITY OF LINO LAKES  
24TH AVENUE NORTH  
WASHINGTON COUNTY

S.E. CORNER SEC. 13



ANOKA COUNTY  
SURVEYOR'S OFFICE  
ROOM 224  
2100 3RD AVENUE  
ANOKA, MN 55303  
(763) 324-3200

QUARTER QUARTER INDEX

|    |    |    |    |                       |
|----|----|----|----|-----------------------|
| 22 | 21 | 12 | 11 | NORTH HALF OF SECTION |
| 23 | 24 | 13 | 14 |                       |
| 32 | 31 | 42 | 41 | SOUTH HALF OF SECTION |
| 33 | 34 | 43 | 44 |                       |

PROPERTY IDENTIFICATION NUMBER  
Section Township Range Quarter Specific  
Number Number Number Quarter Parcel  
XX XX XX XX XXXX  
SPECIFIC PARCEL NUMBERS ARE IN BRACKETS: [1]  
EXAMPLE OF PIN NUMBER: 13-31-22-41-0004

THIS IS A COMPILATION OF RECORDS AS THEY APPEAR IN THE ANOKA COUNTY OFFICES AFFECTING THE AREA SHOWN. THIS DRAWING IS TO BE USED ONLY FOR REFERENCE PURPOSES AND THE COUNTY IS NOT RESPONSIBLE FOR ANY INACCURACIES HEREIN CONTAINED.