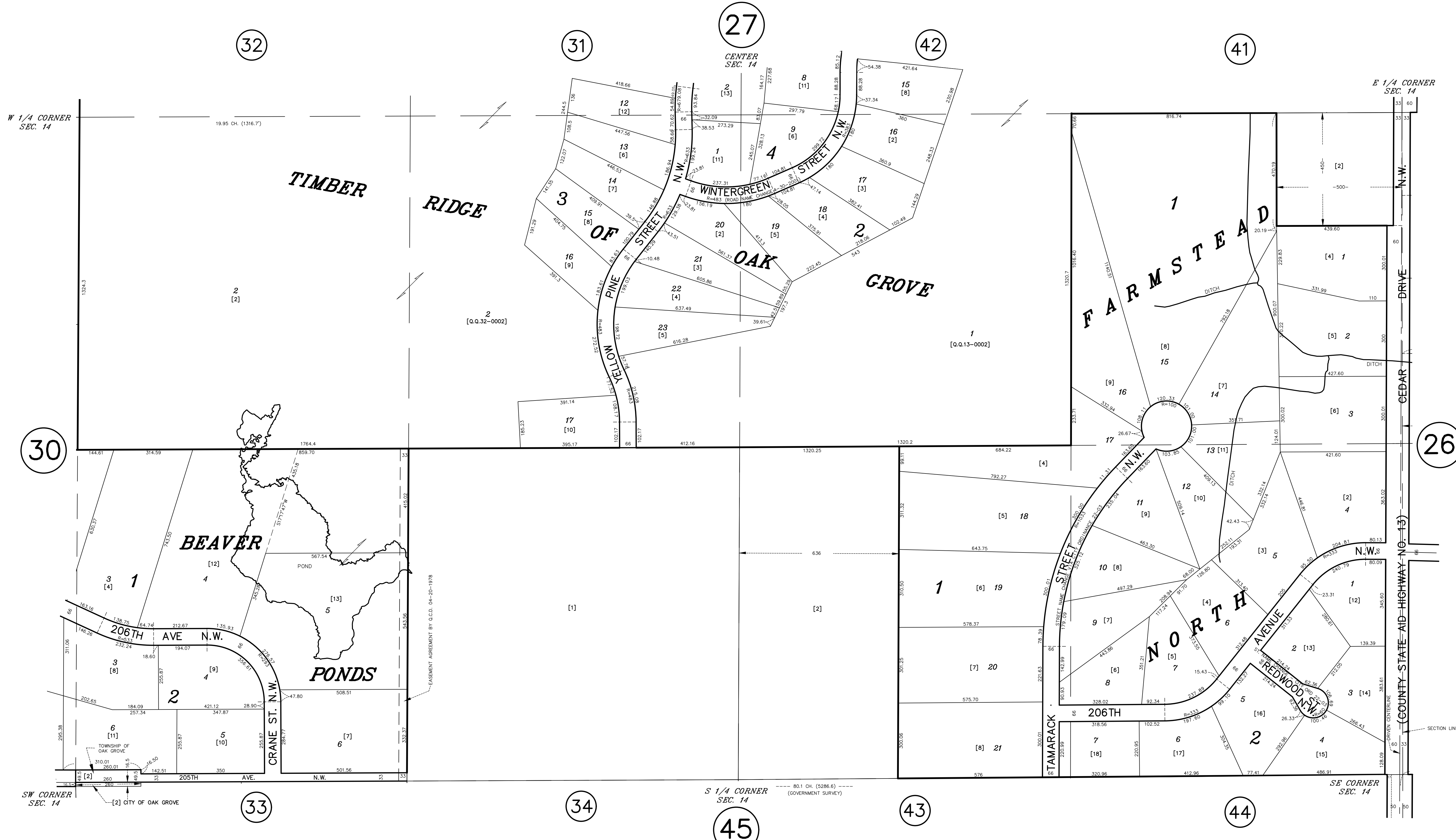


S 1/2 SECTION 14, T. 33, R. 24

CITY OF OAK GROVE



30

32

31

27

42

41

26

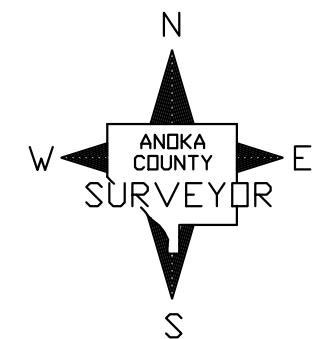
33

34

45

43

44



ANOKA COUNTY
SURVEYOR'S OFFICE
ROOM 224
2100 3RD AVENUE
ANOKA, MN 55303
(763) 324-3200

QUARTER QUARTER INDEX

| | | | | |
|----|----|----|----|-----------------------|
| 22 | 21 | 12 | 11 | NORTH HALF OF SECTION |
| 23 | 24 | 13 | 14 | |
| 32 | 31 | 42 | 41 | SOUTH HALF OF SECTION |
| 33 | 34 | 43 | 44 | |

PROPERTY IDENTIFICATION NUMBER

| Section Number | Township Number | Range Number | Quarter Quarter | Specific Parcel |
|----------------|-----------------|--------------|-----------------|-----------------|
| XX | XX | XX | XX | XXXX |

SPECIFIC PARCEL NUMBERS ARE IN BRACKETS: [1]
EXAMPLE OF PIN NUMBER: 14-33-24-31-0009

THIS IS A COMPILATION OF RECORDS AS THEY APPEAR IN THE ANOKA COUNTY OFFICES AFFECTING THE AREA SHOWN. THIS DRAWING IS TO BE USED ONLY FOR REFERENCE PURPOSES AND THE COUNTY IS NOT RESPONSIBLE FOR ANY INACCURACIES HEREIN CONTAINED.