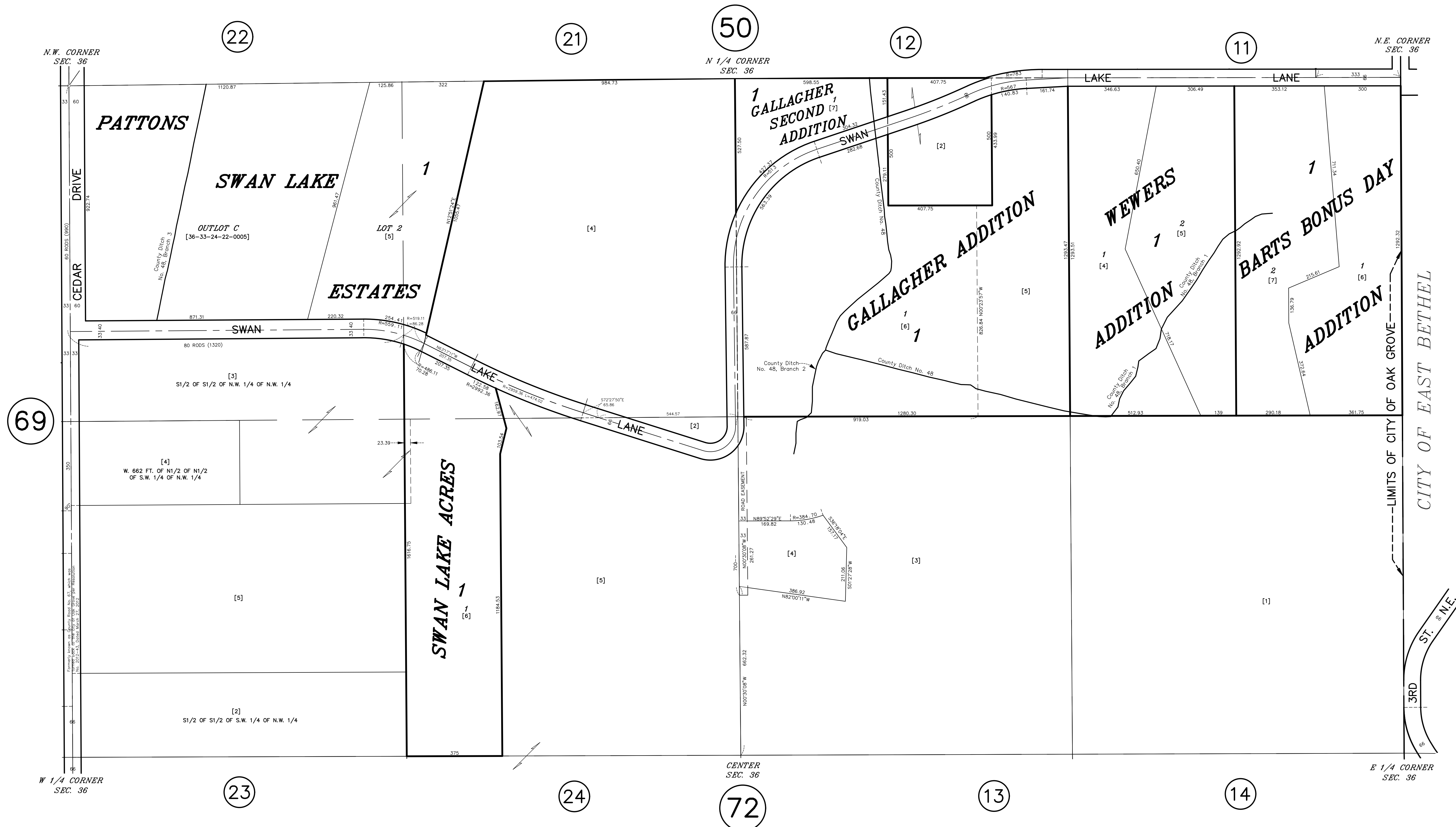


# N 1/2 SECTION 36, T. 33, R. 24

## CITY OF OAK GROVE



69

22

21

50

12

11

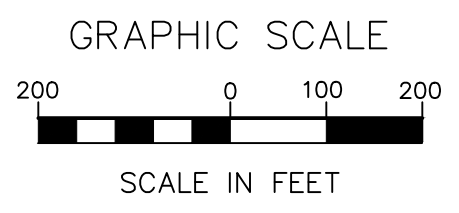
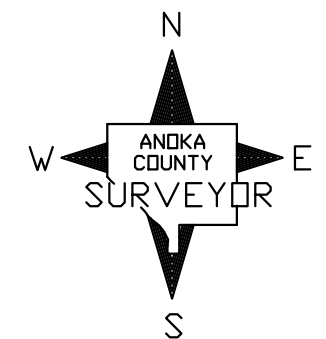
23

24

72

13

14



ANOKA COUNTY  
SURVEYOR'S OFFICE  
ROOM 224  
2100 3RD AVENUE  
ANOKA, MN 55303  
(763) 324-3200

QUARTER QUARTER INDEX

|    |    |    |    |                       |
|----|----|----|----|-----------------------|
| 22 | 21 | 12 | 11 | NORTH HALF OF SECTION |
| 23 | 24 | 13 | 14 |                       |
| 32 | 31 | 42 | 41 | SOUTH HALF OF SECTION |
| 33 | 34 | 43 | 44 |                       |

**PROPERTY IDENTIFICATION NUMBER**

| Section Number | Township Number | Range Number | Quarter Number | Specific Parcel |
|----------------|-----------------|--------------|----------------|-----------------|
| XX             | XX              | XX           | XX             | XXXX            |

SPECIFIC PARCEL NUMBERS ARE IN BRACKETS: [1]  
EXAMPLE OF PIN NUMBER: 36-33-24-13-0002

THIS IS A COMPILATION OF RECORDS AS THEY APPEAR IN THE ANOKA COUNTY OFFICES AFFECTING THE AREA SHOWN. THIS DRAWING IS TO BE USED ONLY FOR REFERENCE PURPOSES AND THE COUNTY IS NOT RESPONSIBLE FOR ANY INACCURACIES HEREIN CONTAINED.