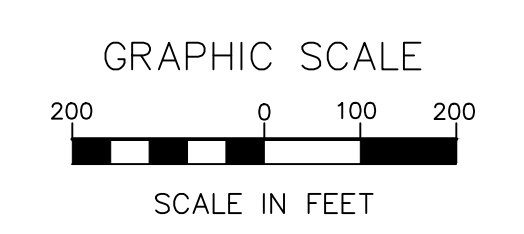
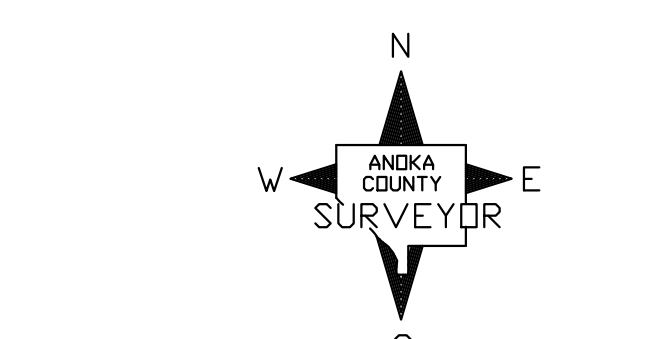
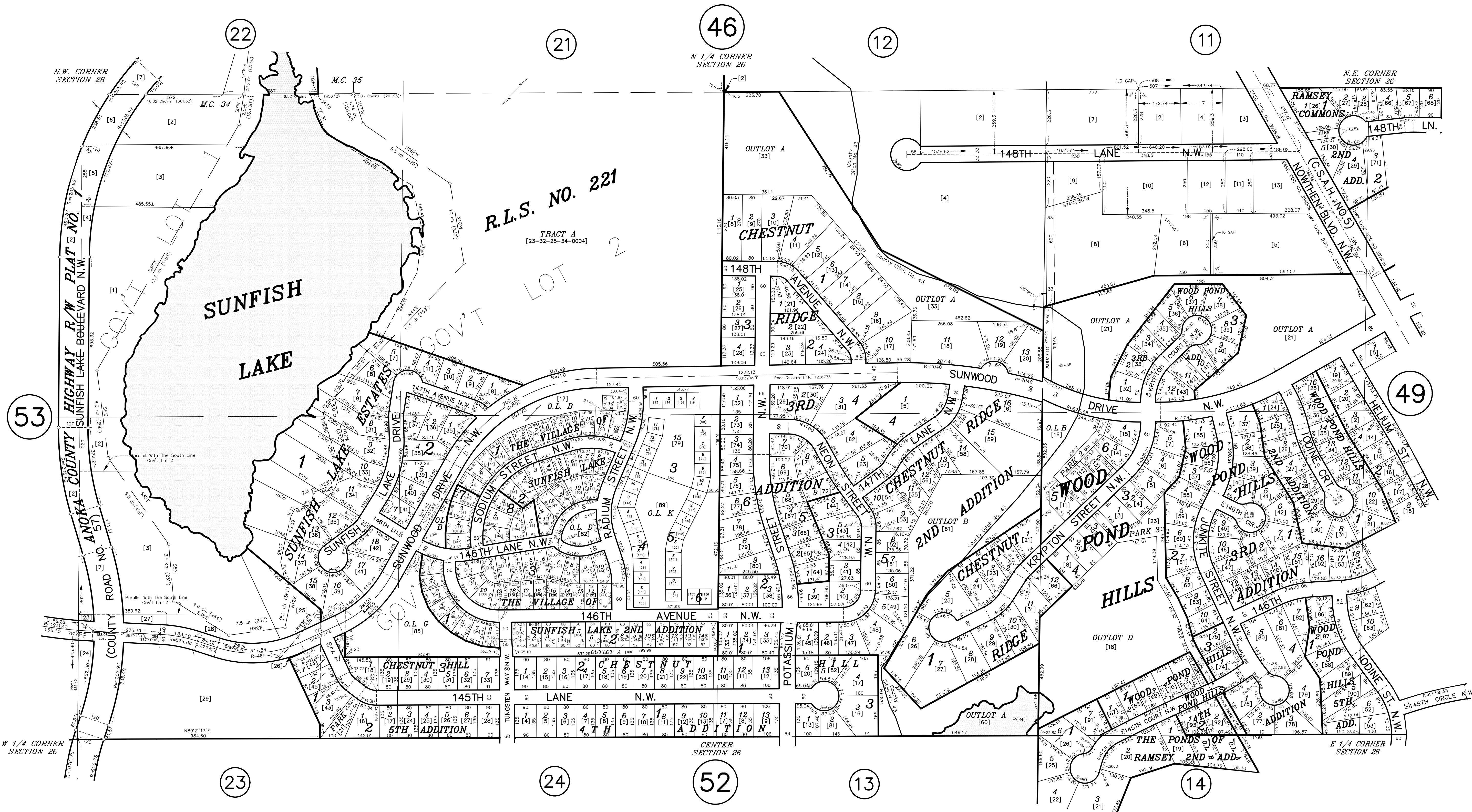


# N 1/2 SECTION 26, T. 32, R. 25

## CITY OF RAMSEY



ANOKA COUNTY  
SURVEYOR'S OFFICE  
ROOM 224  
2100 3RD AVENUE  
ANOKA, MN 55303  
(763) 324-3200

QUARTER QUARTER INDEX

|    |    |    |    |
|----|----|----|----|
| 22 | 21 | 12 | 11 |
| 23 | 24 | 13 | 14 |
| 32 | 31 | 42 | 41 |
| 33 | 34 | 43 | 44 |

NORTH HALF OF SECTION

SOUTH HALF OF SECTION

**PROPERTY IDENTIFICATION NUMBER**

Section Township Range Quarter Specific  
Number Number Number Quarter Parcel

XX XX XX XX XXXX

SPECIFIC PARCEL NUMBERS ARE IN BRACKETS [1]  
EXAMPLE OF PIN NUMBER: 26-32-25-13-0027

THIS IS A COMPILATION OF RECORDS AS THEY APPEAR IN THE ANOKA COUNTY OFFICES AFFECTING THE AREA SHOWN. THIS DRAWING IS TO BE USED ONLY FOR REFERENCE PURPOSES AND THE COUNTY IS NOT RESPONSIBLE FOR ANY INACCURACIES HEREIN CONTAINED.