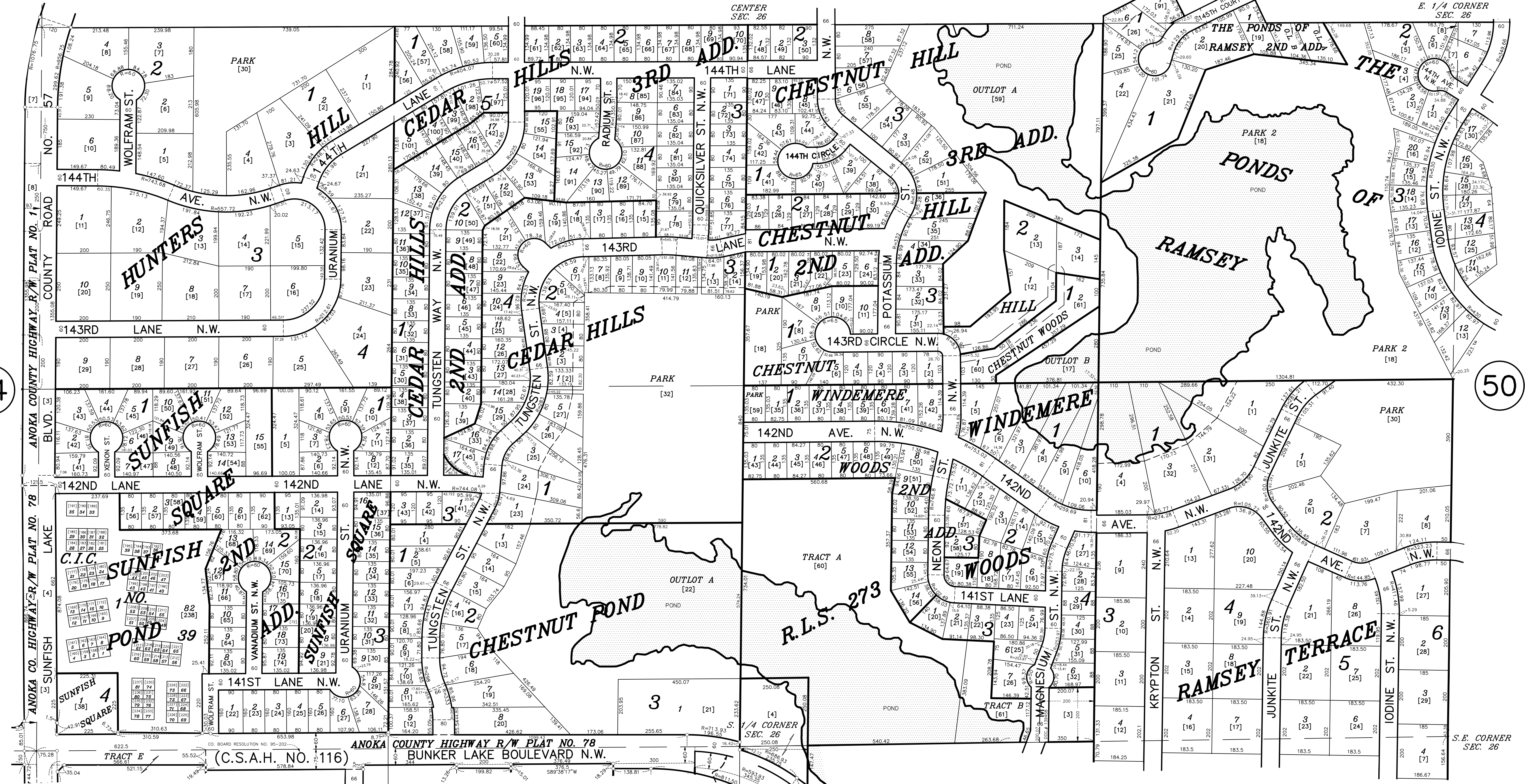


S 1/2 SECTION 26, T. 32, R. 25

CITY OF RAMSEY

W. 1/4 CORNER
SEC. 26

E. 1/4 CORNER
SEC. 26



54

50

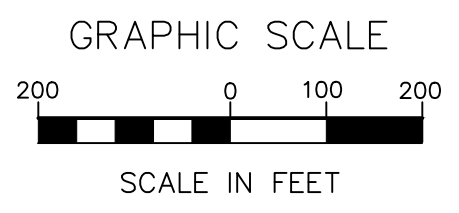
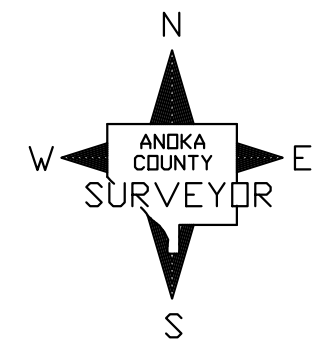
33

34

62

43

44



ANOKA COUNTY
SURVEYOR'S OFFICE
ROOM 224
2100 3RD AVENUE
ANOKA, MN 55303
(763) 324-3200

QUARTER QUARTER INDEX

22	21	12	11	NORTH HALF OF SECTION
23	24	13	14	
32	31	42	41	SOUTH HALF OF SECTION
33	34	43	44	

PROPERTY IDENTIFICATION NUMBER
Section Township Range Quarter Specific
Number Number Number Quarter Parcel
XX XX XX XX XXXX
SPECIFIC PARCEL NUMBERS ARE IN BRACKETS []
EXAMPLE OF PIN NUMBER: 26-32-25-31-0100

THIS IS A COMPILATION OF RECORDS AS
THEY APPEAR IN THE ANOKA COUNTY
OFFICES AFFECTING THE AREA SHOWN.
THIS DRAWING IS TO BE USED ONLY FOR
REFERENCE PURPOSES AND THE COUNTY
IS NOT RESPONSIBLE FOR ANY
INACCURACIES HEREIN CONTAINED.