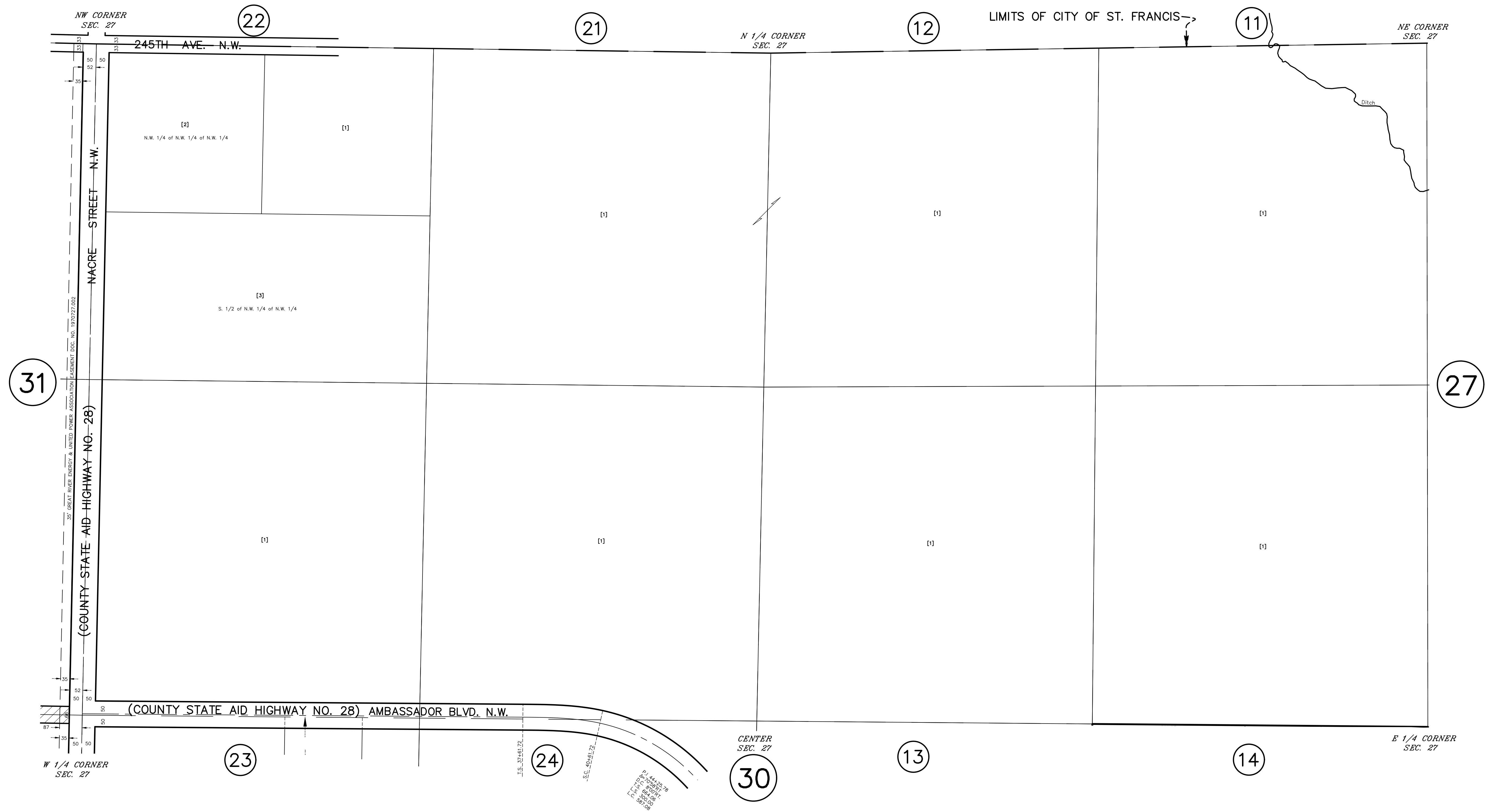


N 1/2 SECTION 27, T. 34, R. 25

CITY OF ST. FRANCIS

ISANTI COUNTY



NW CORNER SEC. 27

22

21

12

11

NE CORNER SEC. 27

245TH AVE. N.W.

N 1/4 CORNER SEC. 27

LIMITS OF CITY OF ST. FRANCIS

NACRE STREET N.W.

[2]
N.W. 1/4 of N.W. 1/4 of N.W. 1/4

[1]

[3]
S. 1/2 of N.W. 1/4 of N.W. 1/4

[1]

[1]

[1]

31

(COUNTY STATE AID HIGHWAY NO. 28)

27

(COUNTY STATE AID HIGHWAY NO. 28) AMBASSADOR BLVD. N.W.

W 1/4 CORNER SEC. 27

23

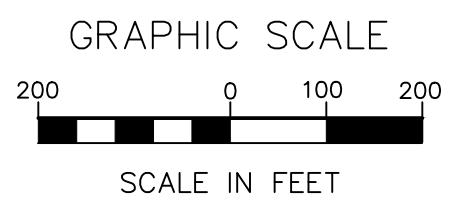
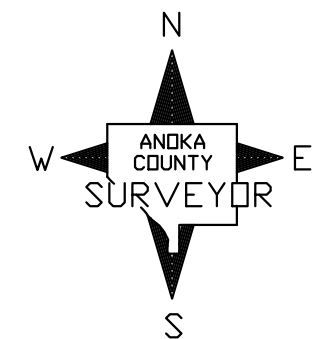
24

CENTER SEC. 27
30

13

14

E 1/4 CORNER SEC. 27



ANOKA COUNTY
SURVEYOR'S OFFICE
ROOM 224
2100 3RD AVENUE
ANOKA, MN 55303
(763) 324-3200

QUARTER QUARTER INDEX

22	21	12	11	} NORTH HALF OF SECTION
23	24	13	14	
32	31	42	41	} SOUTH HALF OF SECTION
33	34	43	44	

PROPERTY IDENTIFICATION NUMBER

Section Number	Township Number	Range Number	Quarter Quarter	Specific Parcel
XX	XX	XX	XX	XXXX

SPECIFIC PARCEL NUMBERS ARE IN BRACKETS: [1]
EXAMPLE OF PIN NUMBER: 27-34-25-13-0001

THIS IS A COMPILATION OF RECORDS AS THEY APPEAR IN THE ANOKA COUNTY OFFICES AFFECTING THE AREA SHOWN. THIS DRAWING IS TO BE USED ONLY FOR REFERENCE PURPOSES AND THE COUNTY IS NOT RESPONSIBLE FOR ANY INACCURACIES HEREIN CONTAINED.