

# STATE OF MINNESOTA DEPARTMENT OF HIGHWAYS Plan and Profile of State Aid Road No. 3

A POINT 1,802' SOUTH OF THE  
From S.E. COR. SEC. 32 T-33-N R-24-W To W. 1/4 COR. SEC. 9 T-33-N R-23-W.  
Give proper reference to Sections, Township and Range

GROSS LENGTH 21,511.3 FEET 3.042 MILES  
LENGTH OF EXCEPTIONS 1951.5 FEET 0.3696 MILES  
NET LENGTH 19,559.8 FEET 3.7045 MILES

PLAN. Inch = 100 Feet.  
PROFILE. Horz. Inch = 100 Feet. Vert. Inch = 10 Feet  
WORKING PLANS Horz. Inch = Feet  
Vert. Inch = Feet  
Cross-Section, Inch = 10 Feet  
LAYOUT  
Scale, Inch = 100 Feet

MINN. PROJ. 56378 (1)

A POINT APPROX. 990' NORTH OF THE  
FROM S.E. COR. SEC. 32, T33N-R24W TO E 1/4 COR. SEC. 17, T33N-24W

GROSS LENGTH 19466.9 FT. 3.6869 MILES  
LENGTH OF EXCEPTIONS 1951.5 FT. 0.3696 MILES  
NET LENGTH 17515.4 FT. 3.3173 MILES

NON-FEDERAL PARTICIPATING PORTION  
STA. 590+55.0 TO STA. 611+40  
LENGTH 2045.0 FT. = 0.3873 MILES

INDEX OF SHEETS

Sheet No. 1. Title Sheet and Layout Map  
" No. 2. Typical Cross-Sections and Statement  
" No. 3. Plan and Profile, Sta. 396+28.1 to Sta. 457+00  
" No. 4. " " " STA. 456+00 TO STA. 519+00  
" NO. 5. " " " STA. 518 TO STA. 581+00  
" NO. 6. " " " STA. 580+00 TO STA. 611+40  
" NO. 6-34 CROSS SECTIONS  
" NO 35 " " " FOR CHAN. CHANGE

SPECIFICATION REFERENCE:  
The specifications for Highway Construction, dated July 1, 1947, and submitted for approval by the Division Engineer of the Bureau of Public Roads October 15, 1947, as modified by "supplement 1" thereto dated April 15, 1953, and submitted for approval by the Division Engineer of the Bureau of Public Roads on March 25, 1953, shall govern.

I HEREBY CERTIFY THAT THIS PLAN WAS PREPARED BY ME OR UNDER MY DIRECT SUPERVISION AND THAT I AM A DULY REGISTERED PROFESSIONAL ENGINEER UNDER THE LAWS OF THE STATE OF MINNESOTA.  
*E. S. Vevea*  
DATE 3-22-55 REG. NO. 2865

MINN. PROJ. 56378(1)  
DESIGN SPEED 50 MPH

PLANNED BY E. S. VEVEA 19 55  
COUNTY ENGINEER FOR ANOKA COUNTY  
RECOMMENDED FOR APPROVAL *E. S. Vevea* 19 55  
DISTRICT ENGINEER  
RECOMMENDED FOR APPROVAL \_\_\_\_\_ 19 \_\_\_\_  
APPROVED 3-22-55 19 55 *E. S. Vevea*  
SIGNALER OF COUNTY DIVISION

DEPARTMENT OF COMMERCE  
BUREAU OF PUBLIC ROADS

APPROVED \_\_\_\_\_  
DISTRICT ENGINEER DATE \_\_\_\_\_

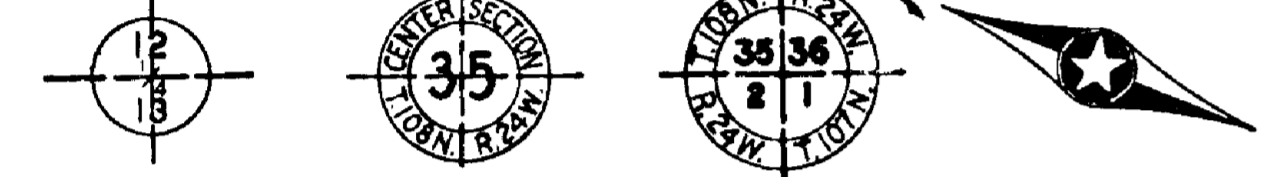
CONVENTIONAL SIGNS

STATE LINE	---
COUNTY LINE	---
TWP. OR RANGE LINE	---
SECTION LINE	---
RIGHT OF WAY LINE	---
CORPORATE OR CITY LIMITS	---
ROAD CENTER LINE	---
RETAINING WALL	---
RAILROADS	---
CREEK	---
DRY RUN	---
DRAINAGE DITCH	---
POWER POLE LINE	---
TELEPHONE OR TELEGRAPH LINE	---
CULVERTS - PLAIN	---
WITH ENDWALLS	---
WITH WINGWALLS	---
DRIP INLET	---
FENCE LINE	---
GRAVEL PIT	---
SAND PIT	---
CLAY PIT	---
ROCK QUARRY	---
SPRINGS	---
MARSH	---
BRUSH OR TIMBER	---
HEDEGE	---
ROCK LEDGE	---
SAND	---
EDGE OF CUT	---
TOE OF EMBANKMENT	---
RAILROAD R/W LINE	---
BUILDING (One Story Frame)	---

ABBREVIATIONS

EXCAVATION	EXC.
EARTH	E
LOOSE ROCK	LR
SOLID ROCK	SR
EMBANKMENT	F
OVERHAUL	H
SURFACING	S
HAND DITCHING	H.D.
SPECIAL EXCAVATION	S.E.
SPECIAL FLOWING	S.F.
GUARD RAIL	G.R.
CORRUGATED METAL CULVERT	C.M. CULV.
SECTIONAL CONCRETE CULVERT	S.C. CULV.
SECTIONAL CONCRETE CULVERT (heavy type)	R.C. CULV.
TON MILES	T.M.
TELEPHONE POLE	TEL. P.
POWER POLE	P.P.
PLACE	PL.
IN PLACE	INP.
REPLACE	REP.
RIGHT	RT.
LEFT	LT.
INTERSECTION ANGLE	Δ
RADIUS	R.
TANGENT	T.
LENGTH OF CURVE	L.
POINT OF CURVE	P.C.
POINT OF TANGENT	P.T.
POINT OF INTERSECTION	P.I.
VERTICAL CURVE	V.C.
BENCH MARK	B.M.
ELEVATION	EL.
ACRES	A.

NOTE: SECTION NUMBERS READ FROM THE SOUTH



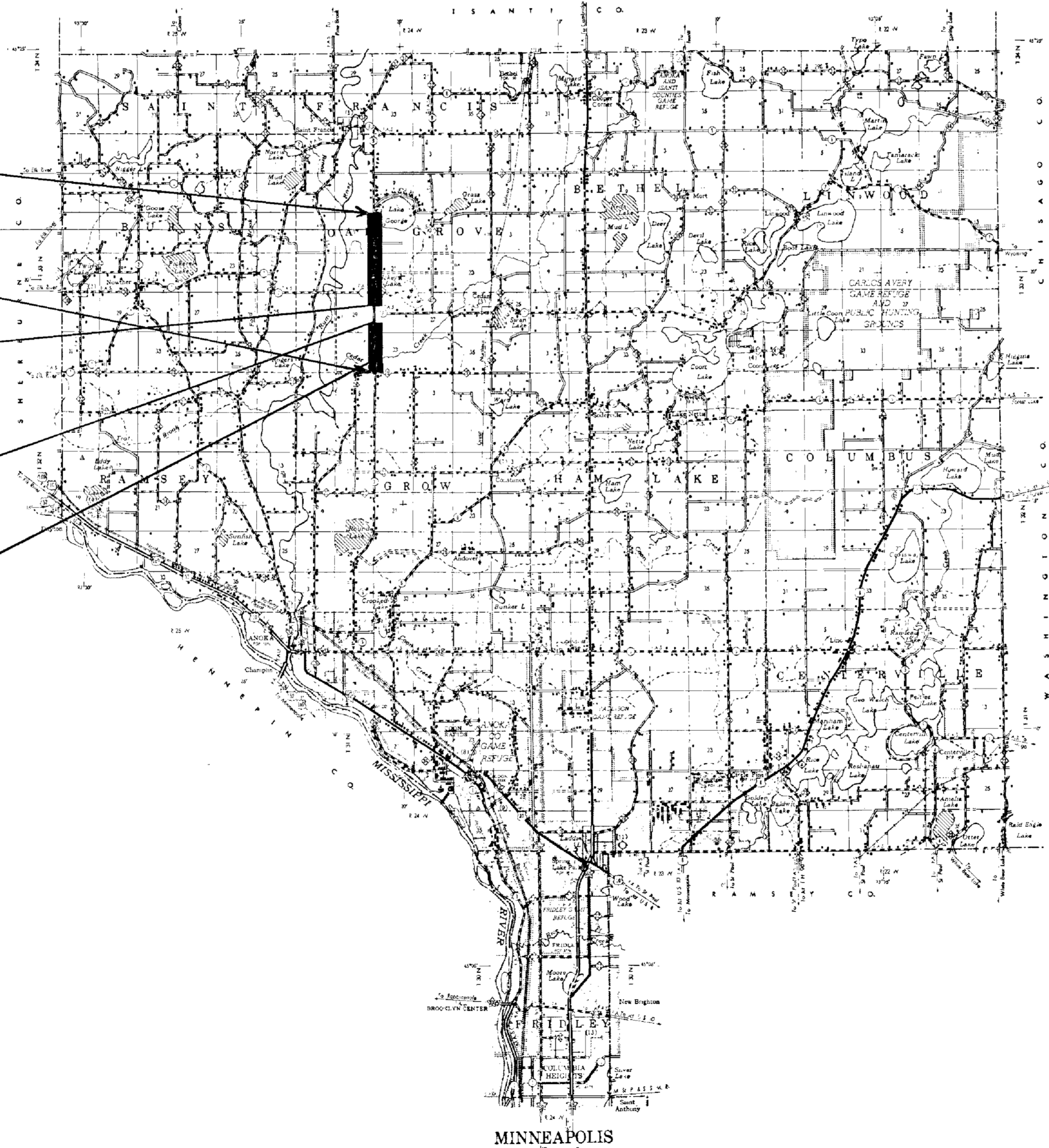
END S.P.02-501-04  
STA. 611+40

END FED. PROJ. 56378(1)  
STA. 590+55

BEGIN S.P.02-501-04 S-6378(1)  
STA. 396+28.1

EXCEPTION  
STA. 466+00 TO  
STA. 485+00

BR. NO. 7157  
BRIDGE LENGTH 51.5'  
STA. 409+63.25 TO STA. 410+40.75

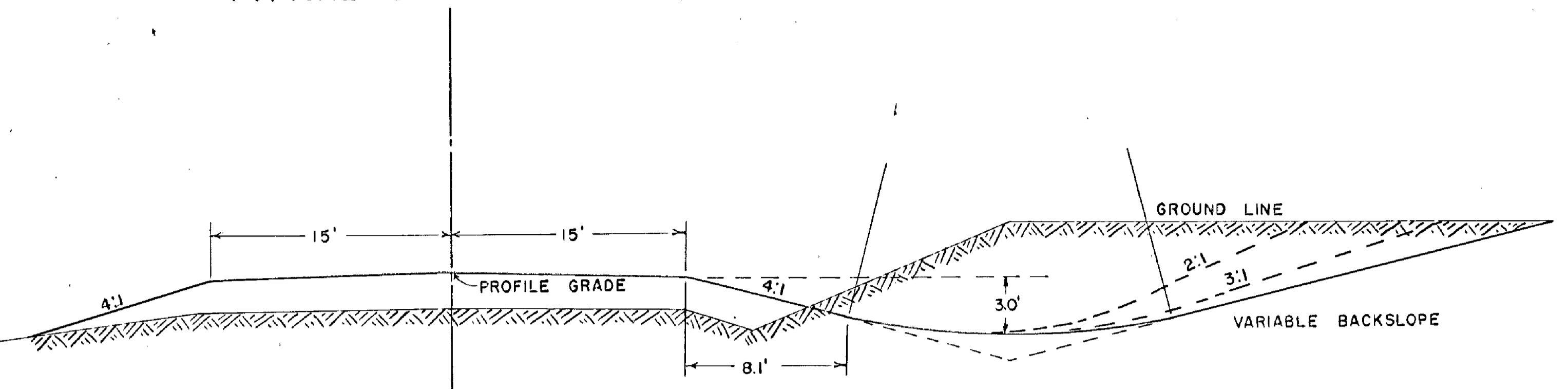


FED. ROAD DIST. NO.	STATE	FED. AID PROJ. NO.	SEC.	FISCAL YEAR	SHEET NO.	TOTAL SHEETS
4	MINN.					

ESTIMATED QUANTITIES					NON-PARTICIPATING PORTION STA. 596+00 TO STA. 611+40
SPECIFICATION NO.	ITEM	UNIT	MINN. PROJ. S.6378(1)	TOTAL ESTIMATED QUANTITIES	
2101.501	CLEARING	ACRE	4.31	4.36	0.05
2101.502	CLEARING	TREE	30	30	0
2101.506	GRUBBING	ACRE	4.96	5.01	0.05
2101.507	GRUBBING	TREE	27	27	0
2104.510	REMOVE FENCE	LIN. FT.	16326	16326	0
2105.503	CLASS "C" EXCAVATION	CU. YDS.	88474	90768	2294
2501.501	PIPE CULVERT EXCAVATION	CU. YDS.	131	131	0
2501.551	SAND GRAVEL BACKFILL	CU. YDS.	262	262	0
2105.503	CLASS "C" EXCAVATION (CHANNEL CHANGE)	CU. YDS.	363	363	0
2501.511-12	FURNISH & INSTALL 12" C.M.P. CULVERT	LIN. FT.	542	614	72
2501.511-15	" " " 15" C.M.P. " "	LIN. FT.	114	114	0
2501.511-42	" " " 42" C.M.P. " "	LIN. FT.	52	52	0
2501.521-24	FURNISH & INSTALL 24" S.C.P. CULVERT	LIN. FT.	138	138	0
* 2574.501	ROAD SIDE SEEDING	ACRE	22.52	24.02	1.50
* 2575.511	MULCH ADMIXTURE TYPE I	TON	26	27	1
2506.501	EXCAVATION FOR CATCH BASIN	CU. YDS.	0	7.0	7.0
2506.507	CONSTRUCT CATCH BASIN TYPE E	LIN. FT.	0	5.0	5.0
* 2506.516	FURNISH & INSTALL CASTING ASSEMBLIES	ASSEMBLY	0	2	2

\* 2574.501 SEED SHALL BE FURNISHED BY CONTRACTOR (CLASS 18) 60 LBS. PER ACRE  
 \* 2575.511 MULCH COMPUTED AT THE RATE OF 2 TONS PER ACRE. (FOR SHOULDER SLOPES IN ACCORDANCE WITH SPEC. NO. 2575.3B - MIX WITH SOIL PRIOR TO SEEDING)  
 \* \* CASTING ASSEMBLIES CONSIST OF FRAME NO. 007 AND GRATE NO. 008

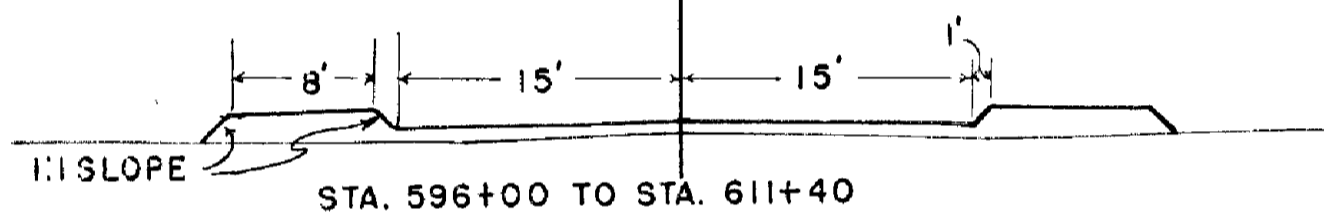
TYPICAL GRADING SECTIONS



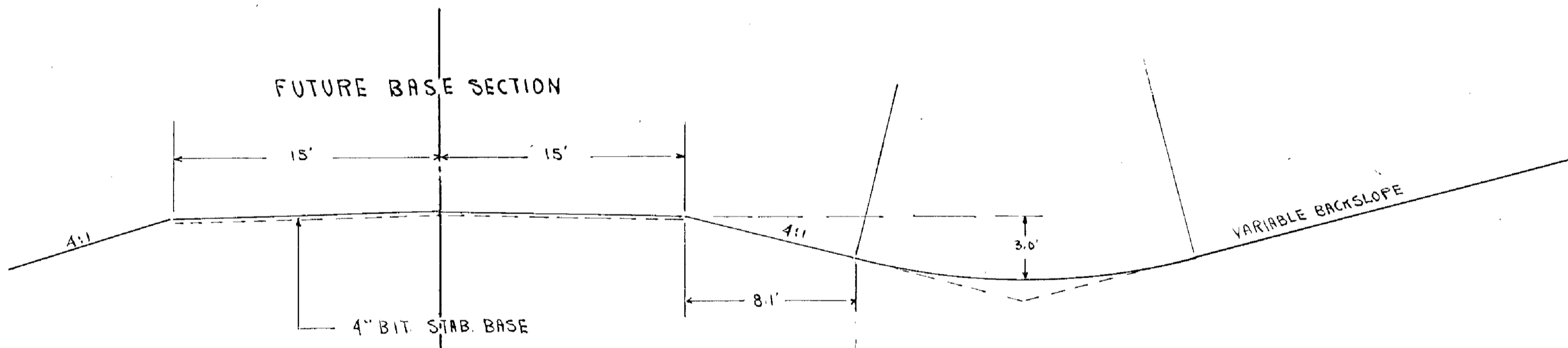
ROADBED TO BE BLADED TO 1/4" PER FOOT PITCH DURING FINISHING OPERATIONS.  
 STA. 396+28.1 TO STA. 466+00 } FED. PROJ.  
 STA. 485+00 TO STA. 596+00 }

SUPERELEVATED CURVES ALL CURVES FOR WHICH NO SUPERELEVATION HAS BEEN PROVIDED IN THE PLAN SHALL BE SUPERELEVATED IN ACCORDANCE WITH DESIGN STANDARDS DURING CONSTRUCTION.

THE UPPER 1.0' OF NATURAL SOIL IS CONSIDERED UNSUITABLE FOR USE IN THE UPPER 1.0' OF ROADWAY. THE UPPER PORTION OF THIS LAYER SHALL BE USED TO COVER DITCH BOTTOMS AND SLOPES. THE REMAINDER TO BE PLACED BELOW THE UPPER 1.0' OF THE EMBANKMENT.



TYPICAL BASE & SURFACE SECTIONS



STANDARD DETAIL PLATES  
 Standard Detail Plates Approved by the Bureau of Public Roads shall apply on this Project.

PLATE NO.	STANDARD DETAIL PLATES
9000	APPROACHES & ENTRANCES
4004	CATCH BASIN FRAME CASTING
4146	GRATE CASTING FOR CATCH BASIN
3000-3001	S.C. CULV. PIPE



C.A.R. N° 239A, 336+281 LT.

PI=STA. 406+622  
Δ=3°35' LT.  
D=0°45'  
T=2330'  
L=4778'

FE STA. 414+26 LT.  
F.O.I. 13'x38' C.M. CULV.

FE STA. 422+88 LT.  
F.O.I. 12'x33' C.M. CULV.

PI=STA. 422+661  
Δ=3°35' LT.  
D=0°45'  
T=212+3  
L=4814'

FE STA. 424+37 LT.  
NO CULV. REQ.

BEGIN S.P. 02-501-04 S-6378(I)  
STA. 396+281

C.A.R. N° 29 STA. 396+281 RT.

STA. 398+50 C.  
F.O.I. 24"x70" S.C. CULV.  
PIPE CULV. EXC. 73 CU. YDS.  
SAND-GRAVEL BACKFILL 158 CU. YDS.

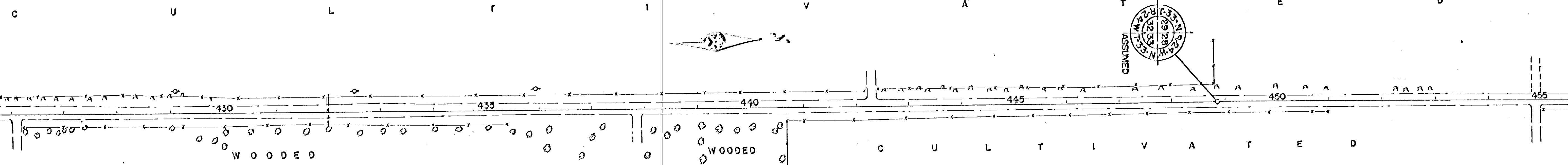
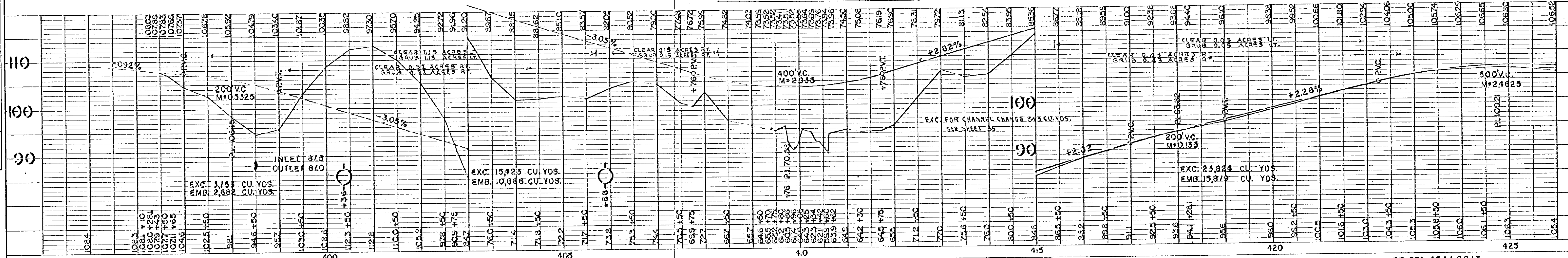
FE STA. 404+83 RT.  
INR 24"x21" MONO. CULV.  
TO REMAIN.

STA. 410+15 C.  
PROPOSED NEW BRIDGE  
AS PER BRIDGE SHEET

PI=STA. 415+729  
Δ=7°40' RT.  
D=7°30'  
T=255.9'  
L=5111'

FE STA. 415+98 RT.  
F.O.I. 15'x38' C.M.

FE STA. 424+58 RT.  
NO CULV. REQ.



FE STA. 426+09 RT.  
NO CULV. REQ.

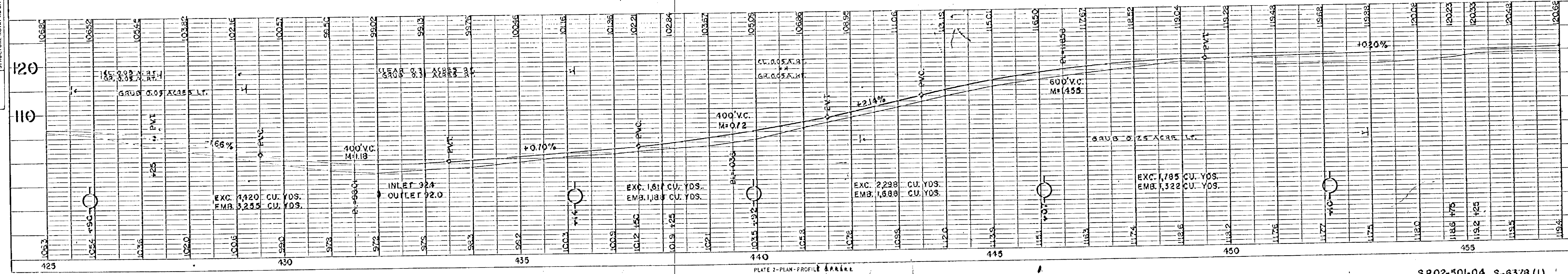
STA. 432+00 C.  
F.O.I. 24"x68" S.C. CULV.  
PIPE CULV. EXC. 52 CU. YDS.  
SAND-GRAVEL BACKFILL 104 CU. YDS.

FE STA. 437+87 RT.  
F.O.I. 15'x38' C.M. CULV.

FE STA. 442+27 LT.  
NO CULV. REQ.

PI=STA. 448+855  
Δ=0°22' RT.

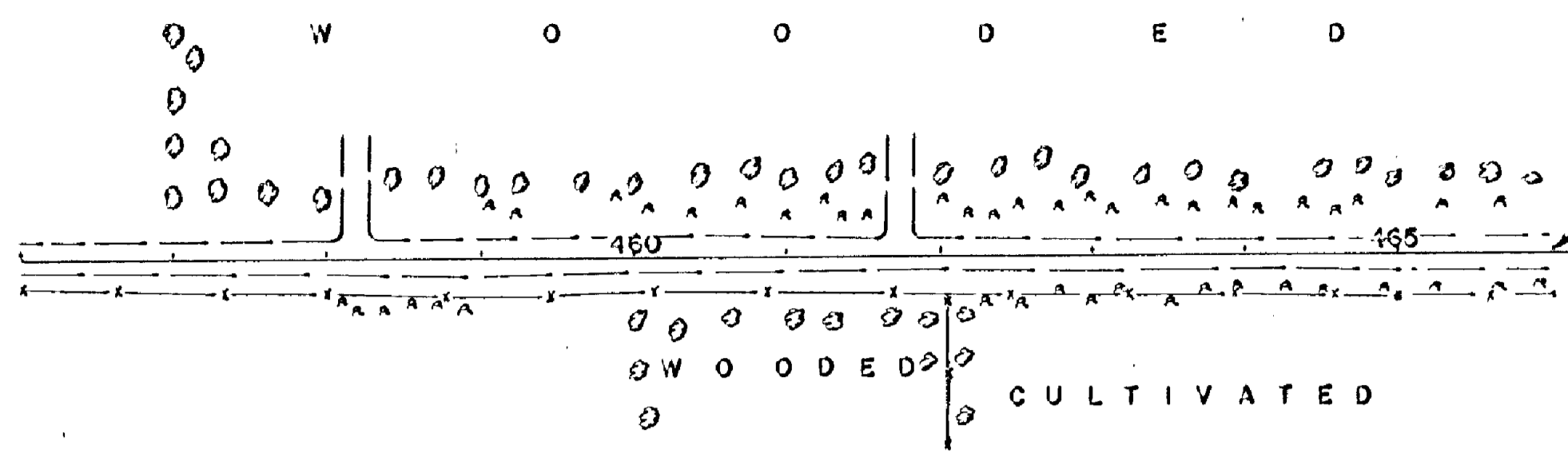
FE STA. 454+88 LT.  
NO CULV. REQ.



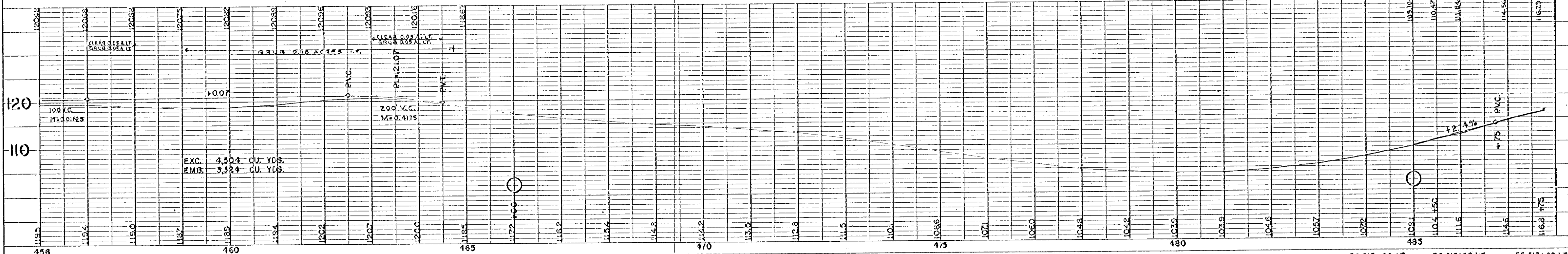
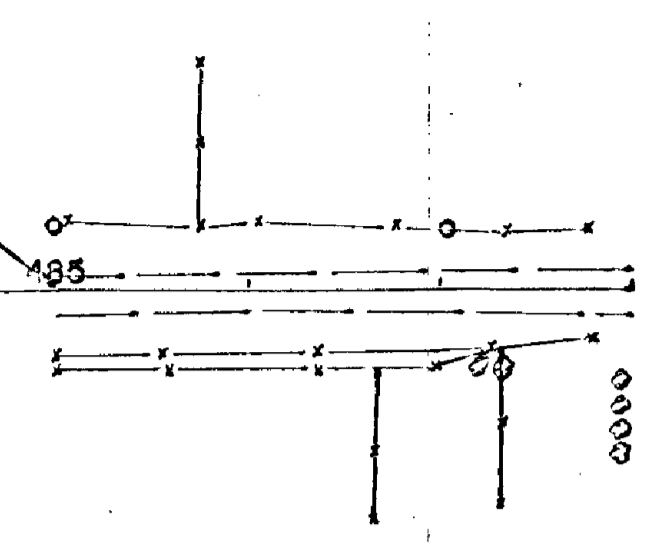


R.E. STA. 458+20 LT.  
NO CULV. REQ'D.

R.E. STA. 461+78 LT.  
NO CULV. REQ'D.



GRADING EXCEPTION  
STA. 466+00 TO STA. 485+00

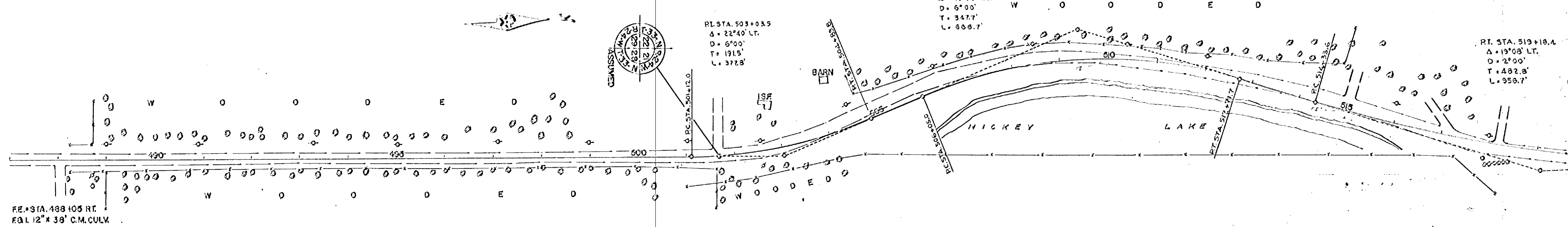


S.A.R. NO. 7 STA. 501+66 LT.  
NO CULV. REQ'D.

P.I. STA. 503+52.7  
A = 40°00' RT.  
D = 6°00'  
T = 347.7'  
L = 666.7'

P.I. STA. 503+03.5  
A = 22°40' LT.  
D = 6°00'  
T = 191.5'  
L = 372.8'

P.I. STA. 519+18.4  
A = 19°08' LT.  
D = 2°00'  
T = 482.8'  
L = 958.7'

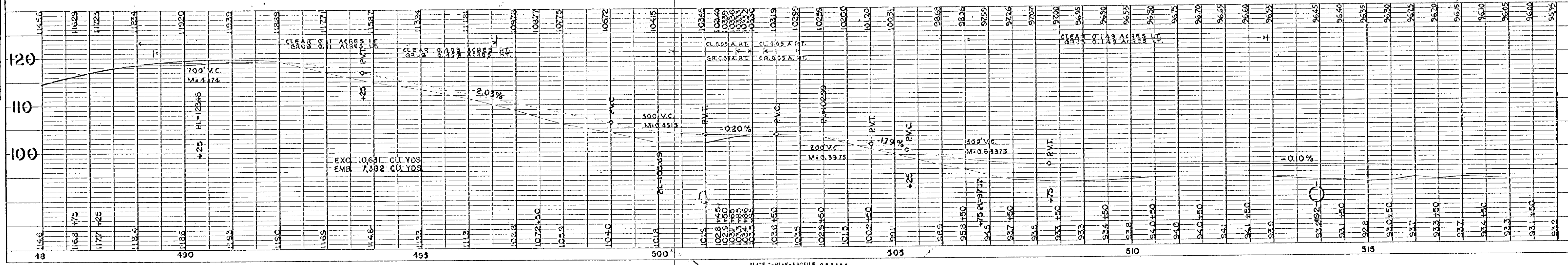


R.E. STA. 488+103 RT.  
R.I. 12' x 38' C.M. CULV.

R.E. STA. 515+00 LT.  
R.I. 12' x 38' C.M. CULV.

R.E. STA. 517+28 LT.  
OMIT IN CONST.

R.E. STA. 518+20 LT.  
R.I. 12' x 38' C.M. CULV.



NOTE BOOK ALIGNMENT CHECKED  
RT. OF WAY CHECKED  
NO.

NOTE BOOK GRADES CHECKED  
S.M.A. NOTES  
STRUCTURE NOTATIONS CHECKED  
NO.

