

CONVENTIONAL SIGNS & ABBREVIATIONS

STATE LINE	TIMBER	TRUNK HIGHWAY R/W LINE
COUNTY LINE	BRUSH	RAILROAD R/W LINE
TOWNSHIP OR RANGE LINE	ORCHARD	PRESENT ROAD R/W LINE
SECTION LINE	ROCK LEDGE	EXCAVATION
QUARTER LINE	SAND	EARTH
SIXTEENTH LINE	EDGE OF CUT	LOOSE ROCK
RIGHT-OF-WAY LINE	TOE OF EMBANKMENT	SOLID ROCK
PROPERTY LINE (Except Land Lines)	CATCH BASIN	EMBANKMENT
VACATED PLATTED PROPERTY	FIRE HYDRANT	OVERHAUL
CORPORATE OR CITY LIMITS	ARC LAMP	SURFACING
TRUNK HIGHWAY CENTER LINE	OTHER LAMPS (State Kind)	HAND DITCHING
RETAINING WALL	RAILROAD CROSSING SIGN	SPECIAL EXCAVATION
STEAM RAILROAD	ELECTRIC WARNING SIGN	SPECIAL PLOWING
ELECTRIC RAILROAD	CROSSING GATE	GUARD RAIL
RAILROAD RIGHT-OF-WAY LINE	CATTLE GUARD	CORRUGATED METAL CULVERT
CREEK	OVERHEAD (Highway Over)	SECTIONAL CONCRETE CULVERT
RAPIDS OR WATERFALL	UNDERPASS (Highway Under)	SECTIONAL CONCRETE CULVERT (Heavy Type)
DRY RUN	ABUTMENT WALL & PIER	TON MILES
DRAINAGE DITCH	GIRDER BRIDGE	TELEPHONE POLE
HIGH TENSION LINE	TRUSS	POWER POLE
POWER POLE LINE	TRESTLE	PLACE
TELEPHONE OR TELEGRAPH LINE	BUILDING (One Story Frame)	INPLACE
CULVERTS-PLAIN	F-FRAME C-CONCRETE	REPLACE
WITH ENDWALLS	S-STONE T-TILE	RIGHT
WITH WINGWALLS	B-BRICK ST-STUCCO	LEFT
DROP INLET	IRON PIPE	INTERSECTION ANGLE
GUARD RAIL	STONE MONUMENT	RADIUS
WIRE FENCE	WOOD STAKE OR HUB	TANGENT
RAILROAD SNOW FENCE	MEANDER CORNER	LENGTH OF CURVE
BOARD OR HIGHWAY SNOW FENCE		POINT OF CURVE
STONE WALL OR FENCE		POINT OF TANGENT
HEDGE		POINT OF INTERSECTION
WATER PIPE		VERTICAL CURVE
SEWER PIPE		BENCH MARK
DRAIN TILE		ELEVATION
GRAVEL PIT		ACRES
SAND PIT		
CLAY PIT		
ROCK QUARRY		
SPRINGS		
MARSH		

STATE OF MINNESOTA
DEPARTMENT OF HIGHWAYS
ROADSIDE DEVELOPMENT PLANS
NATIONAL DEFENSE ACCESS ROAD

BETWEEN M. ST. P. & S. ST. M. RY. UNDERPASS IN MINNEAPOLIS ON MARSHALL ST. N. E. AND 2.5 MILES NO. OF THE NO. CITY LIMITS OF MINNEAPOLIS.

From a point 2025.5' & 385' E. of the N&C Cr. of Sec. 3, T. 29 N., R. 24 W. To a point 2330' N. & 390' E. of the S&W Cr. Sec. 22, T. 30 N., R. 24 W.

MINNESOTA DA-NI-1 NO. SECTION STATE PROJECT NO. 27-513-05

GROSS LENGTH	15,493.3 Feet	2,934 Miles
BRIDGES-LENGTH	0.0 Feet	0.000 Miles
EXCEPTIONS-LENGTH	0.0 Feet	0.000 Miles
NET LENGTH	15,493.3 Feet	2,934 Miles

GROSS LENGTH	2043.3 FEET	0.387 MILES
BRIDGES-LENGTH	0.0 FEET	0.000 MILES
EXCEPTIONS-LENGTH	0.0 FEET	0.000 MILES
NET LENGTH	2043.3 FEET	0.387 MILES

STATE PROJECT NO. 02-502-15

GROSS LENGTH	13,450.0 FEET	2.547 MILES
BRIDGES-LENGTH	0.0 FEET	0.000 MILES
EXCEPTIONS-LENGTH	0.0 FEET	0.000 MILES
NET LENGTH	13,450.0 FEET	2.547 MILES

LAYOUT
Scale 1 Inch = 4,000 Feet

FED. ROAD DIST. NO.	STATE	FED. AID PROJ. NO.	SEC.	FISCAL YEAR	SHEET NO.	TOTAL SHEETS
4	MINN.				1	

INDEX OF SHEETS

Sheet No. 1	Title Sheet and Layout Map
Sheet No. 2	Estimate Sheet
Sheet No. 3	

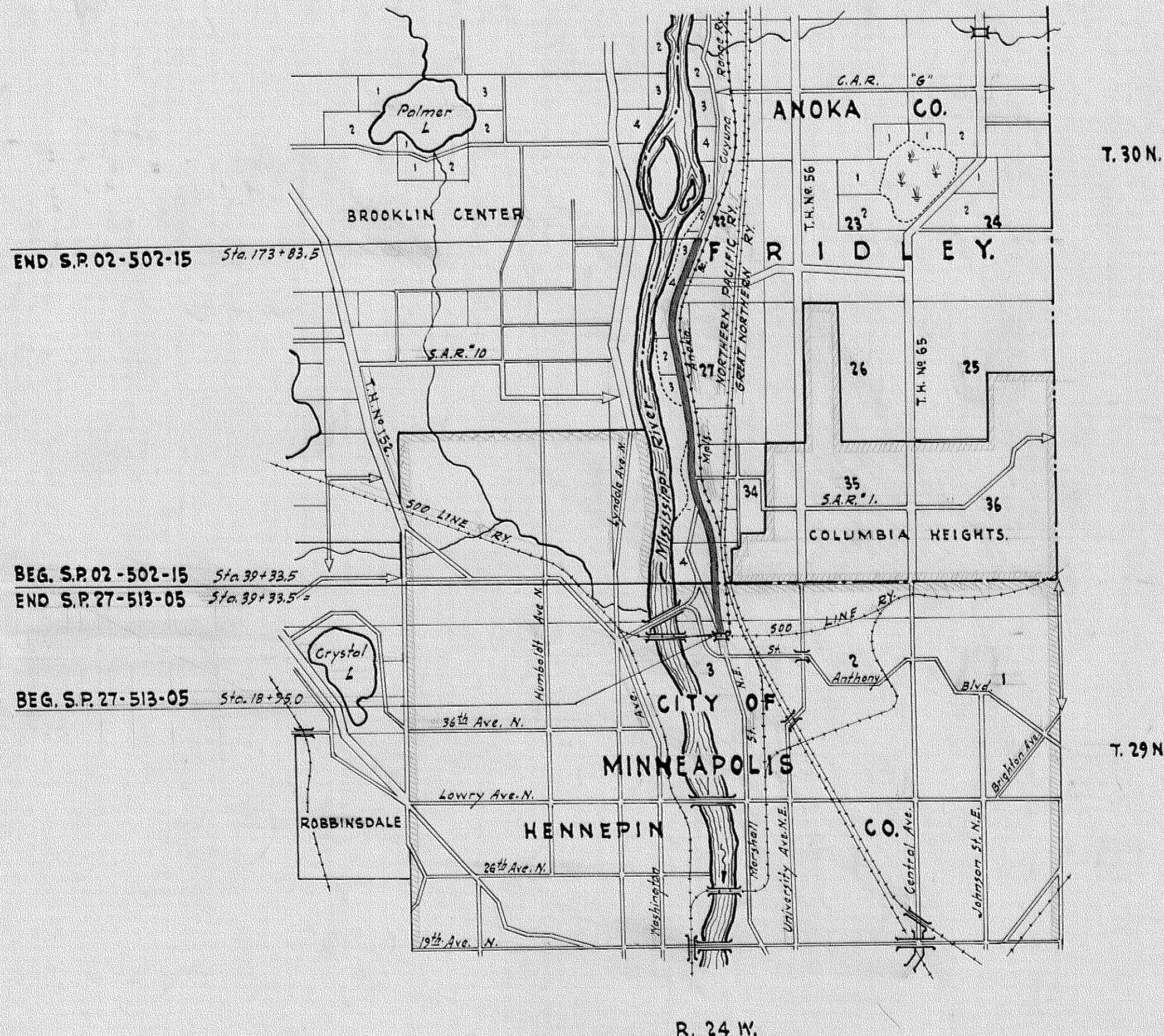


EXISTING PLANT GROWTH
FOLIAGE INDICATION AT RELATIVE SCALE
COMMON (ENGLISH) NAMES

WOOD, FOREST OR GROVE	
SHADE TREE	D = INCH DIAMETER AT BREAST HEIGHT - 4 1/2 FT. S = SPREAD IN FEET OR 1 1/2 X INCH DIAMETER
EVERGREEN TREE (SCREEN TYPE)	
FLOWERING TREE (SMALL TREE OR SHRUB TYPE)	H = HEIGHT
SHRUB MASS (SINGLE OR GROUPED)	
HEDGE-ROW	
CLIPPED HEDGE	

PROPOSED (TO BE PLANTED)
CLASSIFICATION BASED ON RELATIVE SIZE AT MATURITY
SCIENTIFIC (LATIN) NAMES

SHADE TREE	FIGURES WITHIN CIRCLES INDICATES VARIETY OF TREE ACCORDING TO KEY INDEX
FLOWERING TREE	FIGURES WITHIN CIRCLES INDICATES VARIETY OF TREE ACCORDING TO KEY INDEX
EVERGREEN TREE	① LARGE OR SMALL ②
SPECIMEN TREE	① LARGE OR SMALL ②
SMALL TREES IN GROUPS	
LARGE SHRUBS IN GROUPS	
MEDIUM SIZE SHRUBS	FIGURES IN FEET INDICATES SPACING
GROUND COVER	FIRST FIGURE INDICATES QUANTITY LAST FIGURE INDICATES SPACING IN FEET
TO BE TRANSPLANTED - FROM TO	
TO BE REMOVED	
VIEW LINES	
UNDESIRABLE OUTLOOKS	BILL BOARDS ETC.



GENERAL NOTES

Location of proposed trees & shrubs shall be adjusted on the ground to conform to existing conditions such as clearance of overhead wires, sight clearance on curves, overcropping rock, and other fixed local factors.
All tree holes to be 3' in diameter and 3' in depth. Backfilled with 12" of clay and 24" of loam, unless otherwise designated.
Shrubs & vines are to be installed in beds 18" in depth and backfilled with 6" of clay & 12" of loam unless designated on plans as hole planting.
Shrubs & vines designated as hole planting are to be installed in holes 18" in diameter & 18" in depth and backfilled with 6" of clay & 12" of loam.
Planting along the open road shall be informal and natural in arrangement, avoiding straight lines in the installation of individual plants.

Right of Way Approval	<i>S. Lee Green</i> ENGINEER OF LANDS & RIGHT OF WAY	7-15-1943
Planned By	<i>Andrew M. Anderson</i> ENGINEER OF PLANS	7-15-1943
Recommended for Approval	<i>John Schmitt</i> ASST. ENGINEER OF PLANS & SURVEYS	7-16-1943
Recommended for Approval	<i>A. E. Grand</i> DISTRICT ENGINEER	7-16-1943
Recommended for Approval	<i>F. F. Alderman</i> ENGINEER OF PLANS & SURVEYS	7-15-1943
Recommended for Approval		19
Approved	<i>W. J. Davis</i> CHIEF ENGINEER	7-15-1943

RECOMMENDED FOR APPROVAL

DISTRICT ENGINEER
PUBLIC ROADS ADMINISTRATION
FEDERAL WORKS AGENCY

APPROVED

COMMISSIONER
PUBLIC ROADS ADMINISTRATION
FEDERAL WORKS AGENCY

DESIGN SQUAD

STATEMENT OF ROADSIDE DEVELOPMENT QUANTITIES

SPEC. NO	ITEM	COMMON NAME	UNIT	QUANTITY	SIZE	TYPE	RANGE	
2571.5A	FURNISHING AND INSTALLING JUNIPERUS VIRGINIANA	RED CEDAR	TREE	21	4' TO 5' HI. B&B	EVERGREEN TREE	AVERAGE	105
2571.5A	FURNISHING AND INSTALLING PICEA PUNGENS	COLORADO SPRUCE	TREE	190	4' TO 5' HI. B&B	EVERGREEN TREE	AVERAGE	750
2571.5A	FURNISHING AND INSTALLING PINUS NIGRA	AUSTRIAN PINE	TREE	68	4' TO 5' HI. B&B	EVERGREEN TREE	AVERAGE	270
2571.5A	FURNISHING AND INSTALLING PINUS PONDEROSA	WESTERN YELLOW PINE	TREE	22	4' TO 5' HI. B&B	EVERGREEN TREE	AVERAGE	110
2571.5A	FURNISHING AND INSTALLING ACER PLATANOIDES	NORWAY MAPLE	TREE	8	2" TO 2 1/2" CAL	SHADE TREE	LARGE	32
2571.5A	FURNISHING AND INSTALLING ACER SACCHARUM	SUGAR MAPLE	TREE	34	2" TO 2 1/2" CAL	SHADE TREE	LARGE	104
2571.5A	FURNISHING AND INSTALLING FRAXINUS LANCEOLATA	GREEN ASH	TREE	49	2" TO 2 1/2" CAL	SHADE TREE	LARGE	147
2571.5A	FURNISHING AND INSTALLING MALUS IOENSIS	PRAIRIE CRAB	TREE	68	5' TO 6' HI	SHADE TREE	AVERAGE	68
2571.5A	FURNISHING AND INSTALLING POPULUS NIGRA ITALICA	LOMBARDY POPLAR	TREE	46	10' TO 12' HI	SHADE TREE	AVERAGE	69
2571.5A	FURNISHING AND INSTALLING SALIX BLANDA	WISCONSIN WEEPING WILLOW	TREE	15	2" TO 2 1/2" HI	SHADE TREE	LARGE	45
2571.5A	FURNISHING AND INSTALLING ULMUS AMERICANA	AMERICAN ELM	TREE	168	2" TO 2 1/2" HI	SHADE TREE	LARGE	504
2571.5A	FURNISHING AND INSTALLING ACER TARTARICUM	TARTARIAN MAPLE	SHRUB	110	5' TO 6' HI	DECIDUOUS SHRUB	AVERAGE	100
2571.5A	FURNISHING AND INSTALLING AMELANCHIER CANADENSIS	DOWNY SHAD BLOW	SHRUB	21	5' TO 6' HI	DECIDUOUS SHRUB	AVERAGE	25
2571.5A	FURNISHING AND INSTALLING CORNUS STOLONIFERA	RED-OSIER DOGWOOD	SHRUB	50	5' TO 6' HI	DECIDUOUS SHRUB	AVERAGE	50
2571.5A	FURNISHING AND INSTALLING ELAEAGNUS ANGUSTIFOLIA	RUSSIAN OLIVE	SHRUB	60	5' TO 6' HI	DECIDUOUS SHRUB	AVERAGE	60
2571.5A	FURNISHING AND INSTALLING ROSA RUGOSA RUBRA	RED RUGOSA ROSE	SHRUB	225	4' TO 5' HI	DECIDUOUS SHRUB	AVERAGE	150
2571.5A	FURNISHING AND INSTALLING SYRINGA VULGARIS	COMMON LILAC	SHRUB	72	4' TO 5' HI	DECIDUOUS SHRUB	AVERAGE	180
2576.5A	AREA SODDING		SQ. YD.	7848				2350

5307

CITY OF MINNEAPOLIS

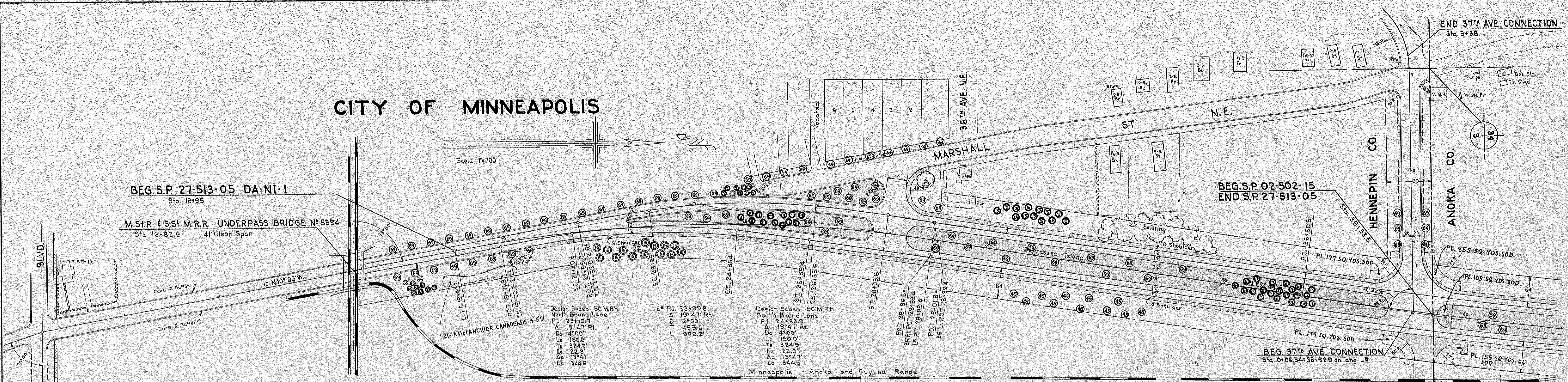
Scale 1"=100'

BEG. S.P. 27-513-05 DA-NI-1
Sta. 18+95

M.St.P. & S.St. M.R.R. UNDERPASS BRIDGE N° 5594
Sta. 16+82.6 41' Clear Span

BEG. S.P. 02-502-15
END S.P. 27-513-05

END 37th AVE. CONNECTION
Sta. 5+38

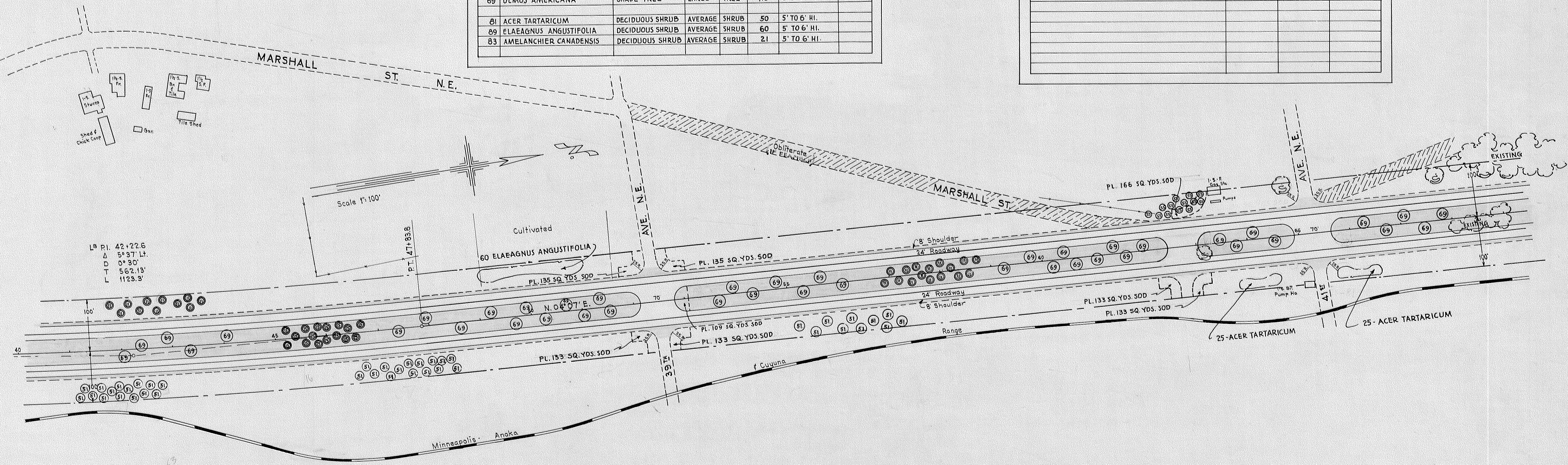


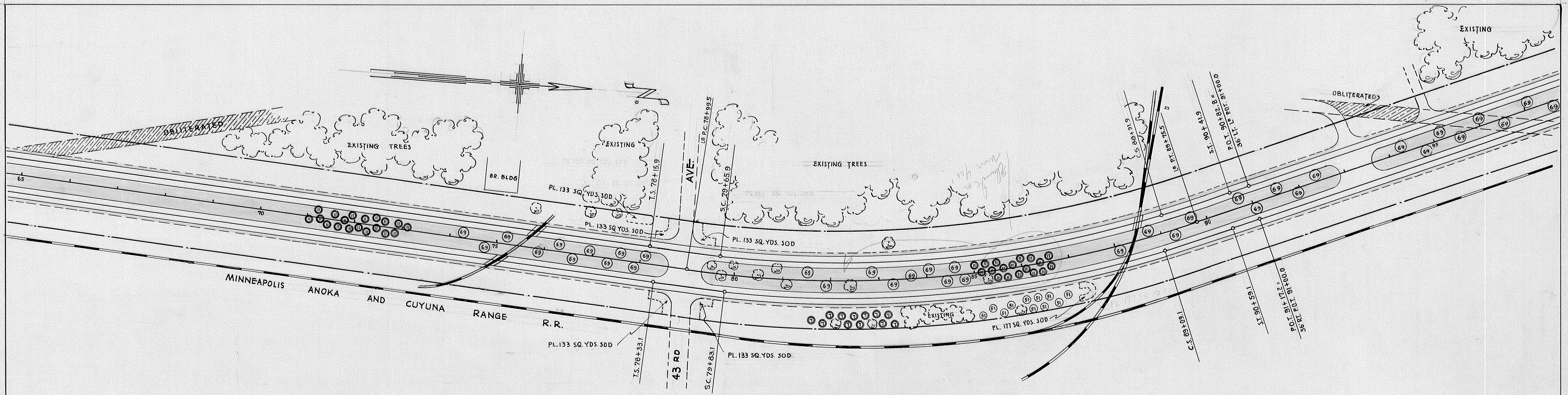
PLANT MATERIAL LIST

INDEX	SCIENTIFIC NAME	TYPE	RANGE	UNIT	QUANTITY	SIZE	REMARKS
7	JUNIPERUS VIRGINIANA	EVERGREEN TREE	AVERAGE	TREE	9	4' TO 5' HI. B & B	
11	PICEA PUNGENS	EVERGREEN TREE	AVERAGE	TREE	61	4' TO 5' HI. B & B	
15	PINUS NIGRA	EVERGREEN TREE	AVERAGE	TREE	44	4' TO 5' HI. B & B	
45	FRAXINUS LANCEOLATA	SHADE TREE	LARGE	TREE	11	2" TO 2 1/2" CAL.	
51	MALUS IOENSIS	SHADE TREE	AVERAGE	TREE	40	5' TO 6' HI.	
55	POPULUS NIGRA ITALICA	SHADE TREE	AVERAGE	TREE	22	10' TO 12' HI.	
69	ULMUS AMERICANA	SHADE TREE	LARGE	TREE	115	2" TO 2 1/2" CAL.	
81	ACER TARTARICUM	DECIDUOUS SHRUB	AVERAGE	SHRUB	50	5' TO 6' HI.	
89	ELAEAGNUS ANGUSTIFOLIA	DECIDUOUS SHRUB	AVERAGE	SHRUB	60	5' TO 6' HI.	
83	AMELANCHIER CANADENSIS	DECIDUOUS SHRUB	AVERAGE	SHRUB	21	5' TO 6' HI.	

ESTIMATED QUANTITIES

ITEM	QUANTITY	UNIT	REMARKS
INSTALLING EVERGREEN TREES	114	TREE	
INSTALLING SHADE TREES	188	TREE	
INSTALLING DECIDUOUS SHRUBS	131	SHRUB	
AREA SODDING	1950	SQ. YD.	



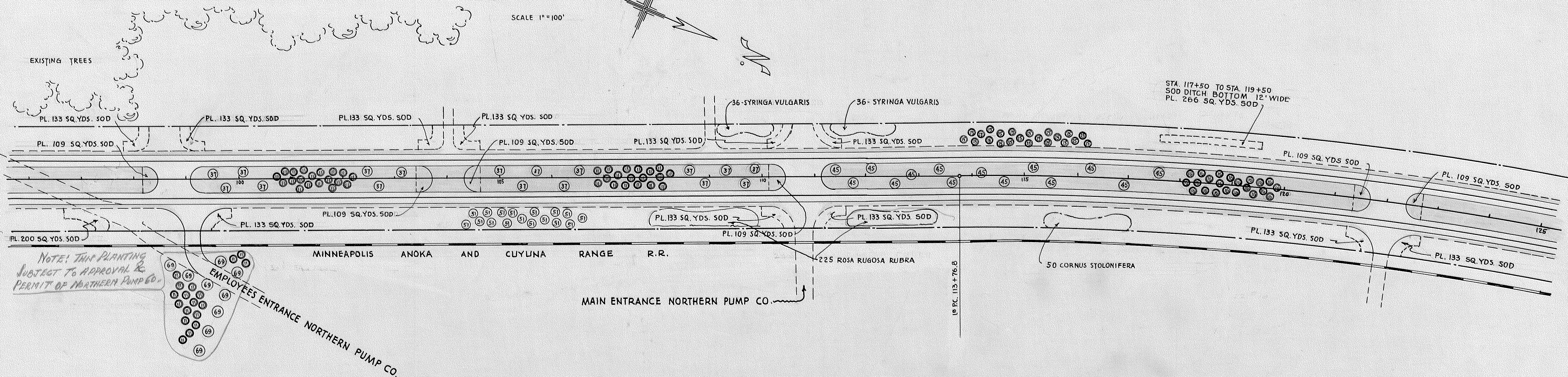
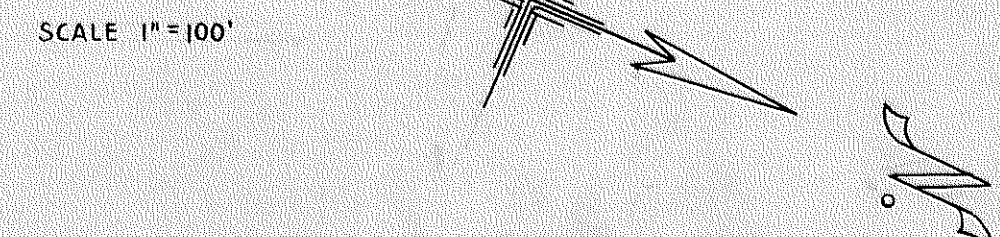


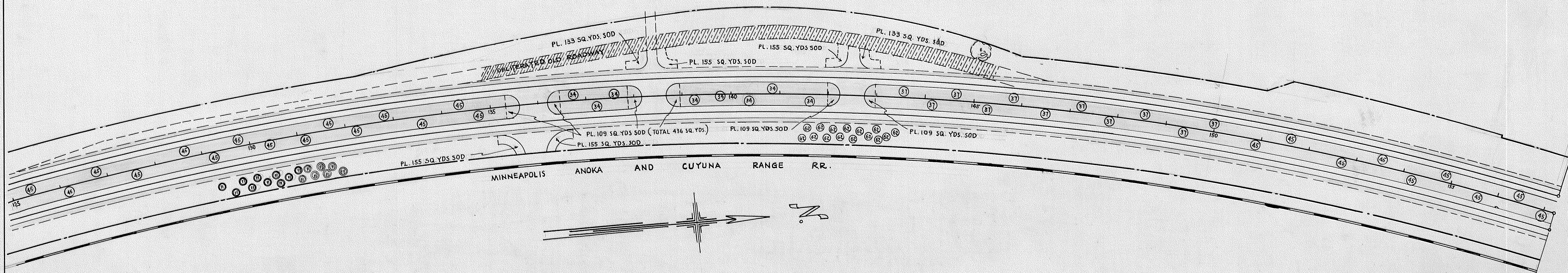
PLANT MATERIAL LIST

INDEX	SCIENTIFIC NAME	TYPE	RANGE	UNIT	QUANTITY	SIZE	REMARKS
7	JUNIPERUS VIRGINIANA	EVERGREEN TREE	AVERAGE	TREE	12	4' TO 5' HI. D&B	
11	PICEA PUNGENS	EVERGREEN TREE	AVERAGE	TREE	92	4' TO 5' HI. D&B	
15	PINUS NIGRA	EVERGREEN TREE	AVERAGE	TREE	22	4' TO 5' HI. D&B	
16	PINUS PONDEROSA	EVERGREEN TREE	AVERAGE	TREE	22	4' TO 5' HI. D&B	
37	ACER SACCHARUM	SHADE TREE	LARGE	TREE	17	2" TO 2 1/2" CAL.	
45	FRAXINUS LANCEOLATA	SHADE TREE	LARGE	TREE	14	2" TO 2 1/2" CAL.	
51	MALUS IDENSIS	SHADE TREE	AVERAGE	TREE	28	5' TO 6' HI.	
69	ULMUS AMERICANA	SHADE TREE	LARGE	TREE	46	2" TO 2 1/2" CAL.	
87	CORNUS STOLONIFERA	DECIDUOUS SHRUB	AVERAGE	SHRUB	50	5' TO 6' HI.	
115	ROSA RUGOSA RUBRA	DECIDUOUS SHRUB	AVERAGE	SHRUB	225	4' TO 5' HI.	
129	SYRINGA VULGARIS	DECIDUOUS SHRUB	AVERAGE	SHRUB	72	4' TO 5' HI.	

ESTIMATED QUANTITIES

ITEM	QUANTITY	UNIT	REMARKS
INSTALLING EVERGREEN TREES	148	TREE	
INSTALLING SHADE TREES	107	TREE	
INSTALLING DECIDUOUS SHRUBS	347	SHRUB	
AREA SODDING	3425	SQ. YD.	



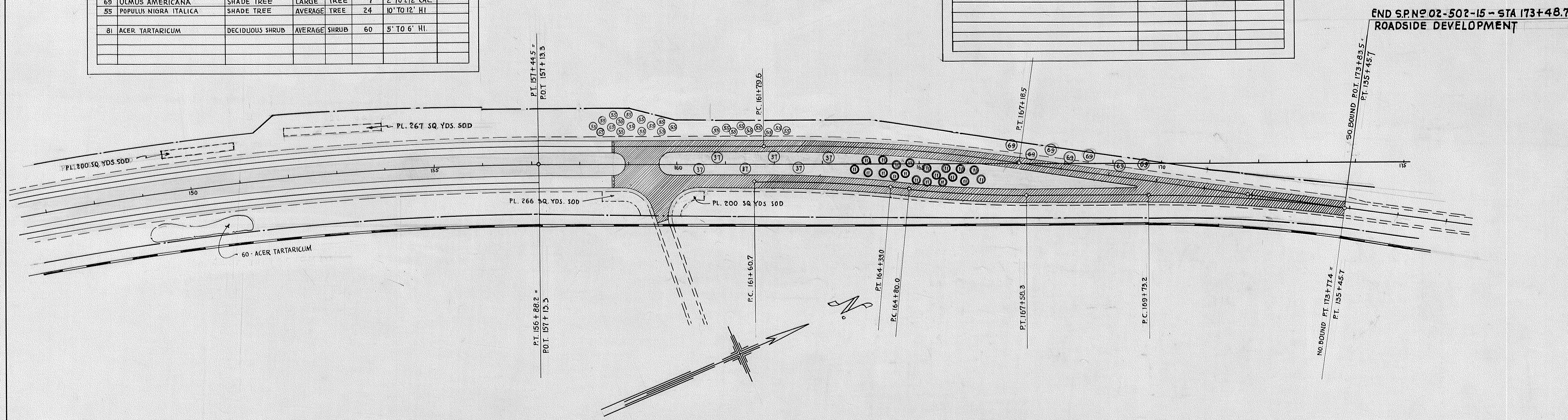


PLANT MATERIAL LIST

INDEX	SCIENTIFIC NAME	TYPE	RANGE	UNIT	QUANTITY	SIZE	REMARKS
11	PICEA PUNGENS	EVERGREEN TREE	AVERAGE	TREE	37	4' TO 5' HI. B&B	
34	ACER PLATANOIDES	SHADE TREE	LARGE	TREE	8	2" TO 2 1/2" CAL	
37	ACER SACCHARUM	SHADE TREE	LARGE	TREE	17	2" TO 2 1/2" CAL	
45	FRAXINUS LANCEOLATA	SHADE TREE	LARGE	TREE	24	2" TO 2 1/2" CAL	
62	SALIX BLANDA	SHADE TREE	LARGE	TREE	15	2" TO 2 1/2" CAL	
69	ULMUS AMERICANA	SHADE TREE	LARGE	TREE	7	2" TO 2 1/2" CAL	
55	POPULUS NIGRA ITALICA	SHADE TREE	AVERAGE	TREE	24	10" TO 12" HI	
81	ACER TARTARICUM	DECIDUOUS SHRUB	AVERAGE	SHRUB	60	5' TO 6' HI.	

ESTIMATED QUANTITIES

ITEM	QUANTITY	UNIT	REMARKS
INSTALLING EVERGREEN TREES	62	TREE	
INSTALLING SHADE TREES	70	TREE	
INSTALLING DECIDUOUS SHRUBS	60	SHRUB	
AREA SODDING	2473	SQ. YD.	



END SP.Nº 02-502-15 - STA 173+48.7
ROADSIDE DEVELOPMENT