

STATE OF MINNESOTA  
DEPARTMENT OF HIGHWAYS

CONSTRUCTION PLAN FOR S.P. 02-610-03

County State Aid Highway No. 10

Between UNIVERSITY EXTENSION And T.H. NO. 65

A PT. APPROX. 760' E'LY OF W.1/4 CORNER From SEC. 31 T-31 R-23 A PT. 51.24' W'LY OF CENTER SEC. 32 T-31 R-23

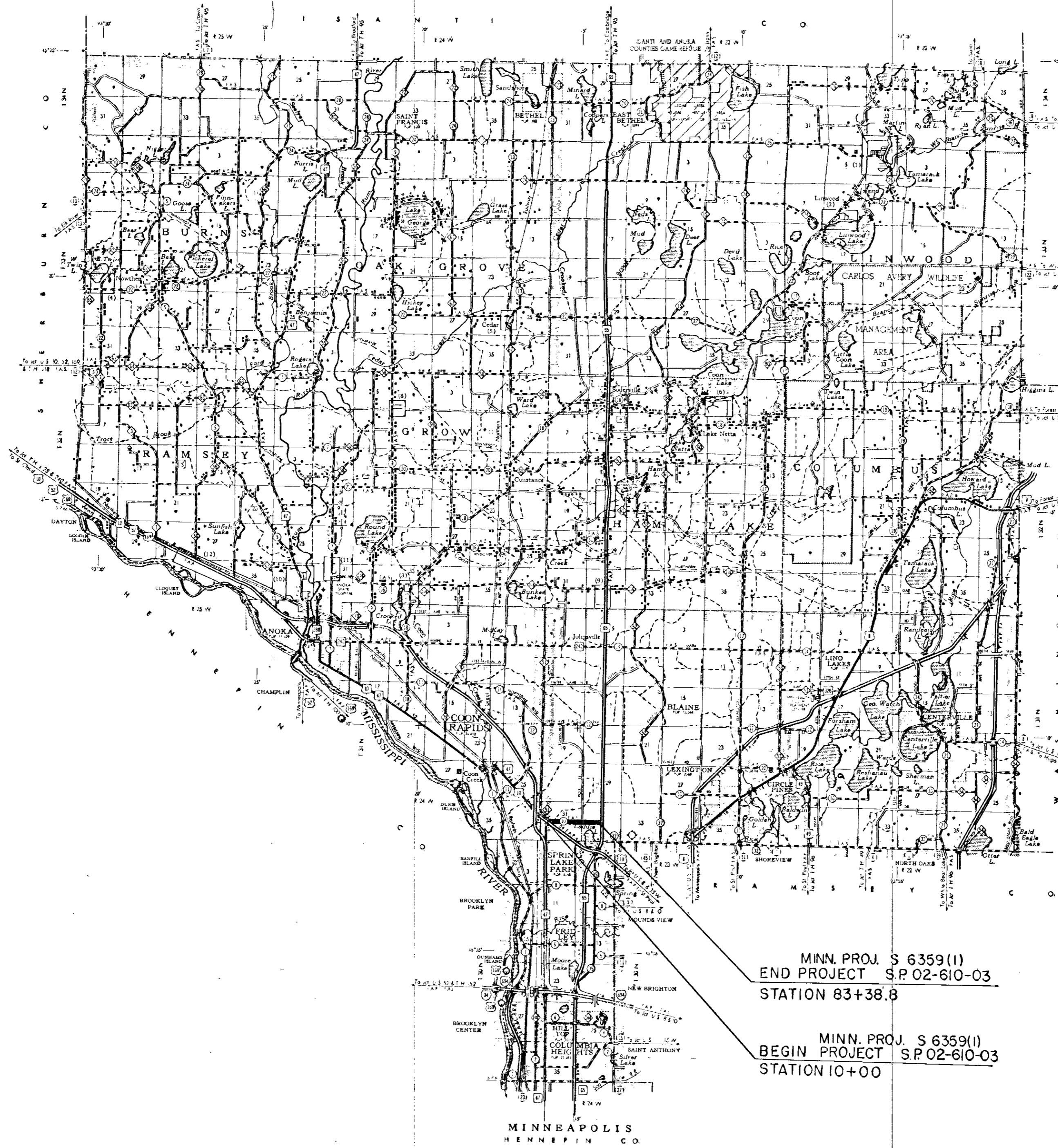
GROSS LENGTH 7,338.80 FEET 1.390 MILES  
BRIDGES LENGTH FEET MILES  
EXCEPTIONS LENGTH FEET MILES  
NET LENGTH 7,338.80 FEET 1.390 MILES

INDEX OF SHEETS

- Sheet No. 1 Title Sheet & Layout Map
- No. 2 Est. Quantities & Typical Sec.
- No. 3 To 7 Plan & Profile
- No. 8 To 15 Cross Sections

CONVENTIONAL SIGNS

- STATE LINE
- COUNTY LINE
- TOWNSHIP OR RANGE LINE
- SECTION LINE
- QUARTER LINE
- SIXTEENTH LINE
- RIGHT OF WAY LINE
- PRESENT RIGHT OF WAY LINE
- CONTROL OF ACCESS LINE
- PROPERTY LINE (EQUIDISTANT LINE)
- VACATED PLATTED PROPERTY
- CORPORATE OR CITY LIMITS
- TRUNK HIGHWAY CENTER LINE
- RETAINING WALL
- RAILROAD
- RAILROAD RIGHT OF WAY LINE
- RIVER OR CREEK
- DRY RIVER
- DRAINAGE DITCH
- ELECTRIC POWER LINE
- TELEPHONE OR TELEGRAPH LINE
- JOINT TELEPHONE AND POWER
- CONDUIT
- TELEPHONE CABLE - AERIAL
- TELEPHONE CABLE - UNDERGROUND
- POWER CABLE - UNDERGROUND
- GAS TANK
- COUVERT
- GROUP INLET
- GROUP BOX
- BARBED WIRE FENCE
- WOVEN WIRE FENCE
- CHAIN LINK FENCE
- RAILROAD SNOW FENCE
- STONE WALL OR FENCE
- HESSIE
- WATER PIPE
- SEWER PIPE
- DRAIN TILE
- SPRINGS
- MARSH
- TIMBER
- ORCHARD
- BRUSH
- NURSERY
- CATCH BASIN
- MANHOLE
- PIPE HYDRANT
- STREET LIGHT
- RAILROAD CROSSING SIGN
- RAILROAD CROSSING BELL
- ELECTRIC WARNING SIGN
- CROSSING GATE
- CATTLE GUARD
- OVERPASS (Highway Over)
- UNDERPASS (Highway Under)
- BRIDGE
- BUILDING (One Story Frame)
- F FRAME
- C CONCRETE
- S STONE
- T TILE
- B BRICK
- ST STUCCO
- IRON PIPE OR HOOD
- MONUMENT (STONE, CONCRETE, OR METAL)
- WOODEN HUB
- GRAVEL PIT
- SAND PIT
- BOARD P.T.
- ROCK QUARRY
- MEANDER CORNER



MINN. PROJ. S 6359(1)  
END PROJECT S.P. 02-610-03  
STATION 83+38.8

MINN. PROJ. S 6359(1)  
BEGIN PROJECT S.P. 02-610-03  
STATION 10+00

MINNEAPOLIS  
HENNEPIN CO.

DESIGN DESIGNATION

ADT (CURRENT YEAR) 1,028

ADT (FUTURE YEAR) 2,364

T (HEAVY COMMERCIAL) 1%

9 Ton Design

Design Speed 30 MPH

Design Speed not achieved at:

STA TO STA MPH

STA TO STA MPH

SPECIFICATIONS

THE "STANDARD SPECIFICATIONS FOR HIGHWAY CONSTRUCTION", DATED JAN. 1, 1964, AS AMENDED  
BY SUPPLEMENTAL SPECIFICATIONS, DATED FEB. 1, 1966, SHALL GOVERN.

ALL APPLICABLE FEDERAL, STATE AND LOCAL LAWS AND ORDINANCES WILL BE COMPLIED WITH, IN THE CONSTRUCTION OF THIS PROJECT.

I HEREBY CERTIFY THAT THIS PLAN WAS PREPARED BY ME OR UNDER MY DIRECT SUPERVISION AND THAT I AM A DULY REGISTERED PROFESSIONAL ENGINEER UNDER THE LAWS OF THE STATE OF MINNESOTA.

*E. J. Lundheim* DATE *May 23, 1969*  
COUNTY ENGINEER

ANOKA COUNTY REG. NO. 2551

RECOMMENDED FOR APPROVAL *H. P. ...* 2/12/1969  
DISTRICT STATE AID ENGINEER

RECOMMENDED FOR APPROVAL *C. E. ...* 6-12-1969

APPROVED *6/13/69* *Hyndes M. Gay*  
STATE AID ENGINEER

Minn. Proj. No. \_\_\_\_\_ County Proj. No. \_\_\_\_\_  
State Proj. No. \_\_\_\_\_ S. P. 02-610-03

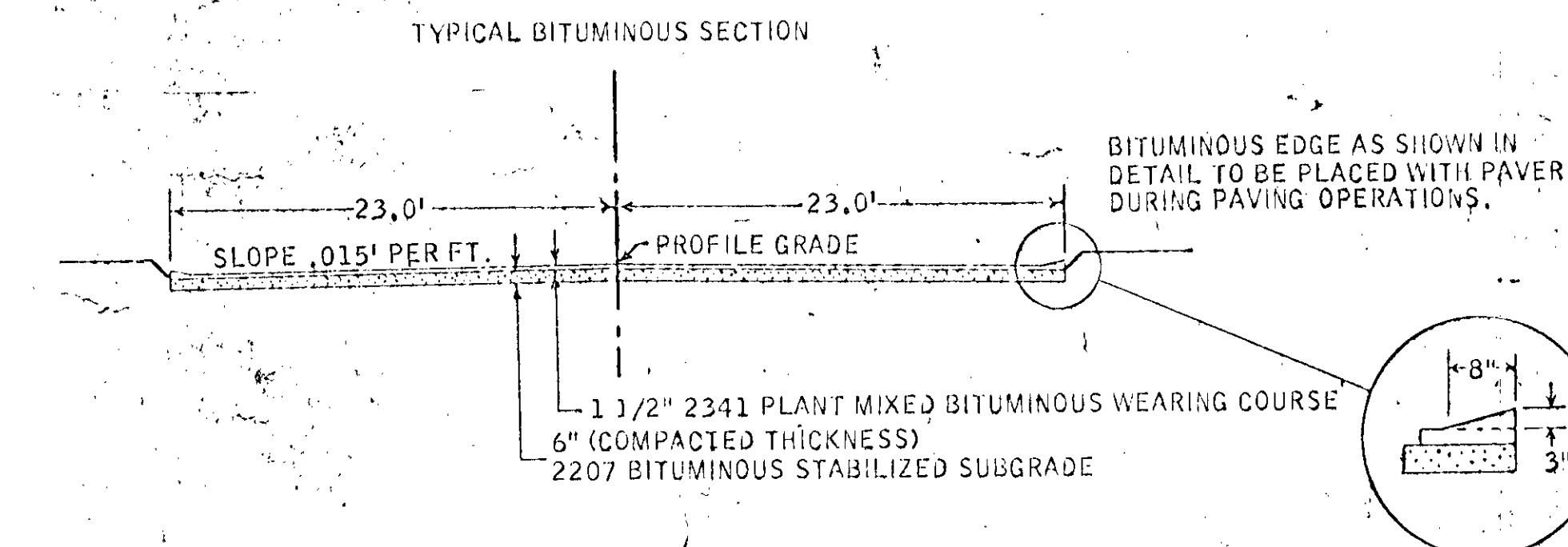
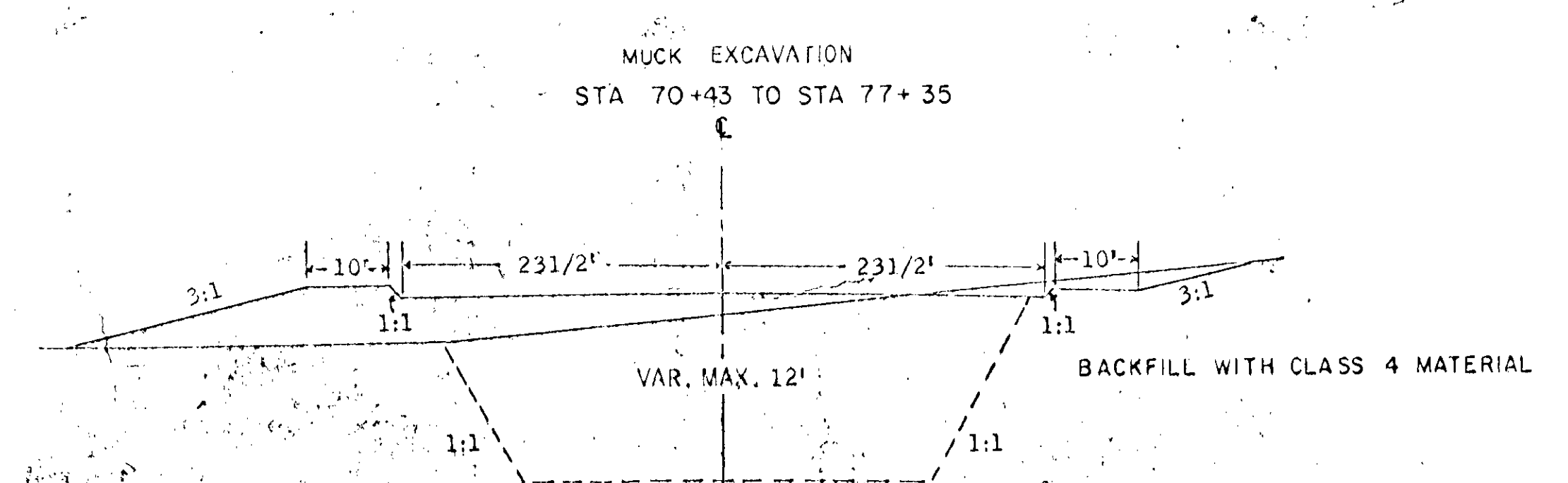
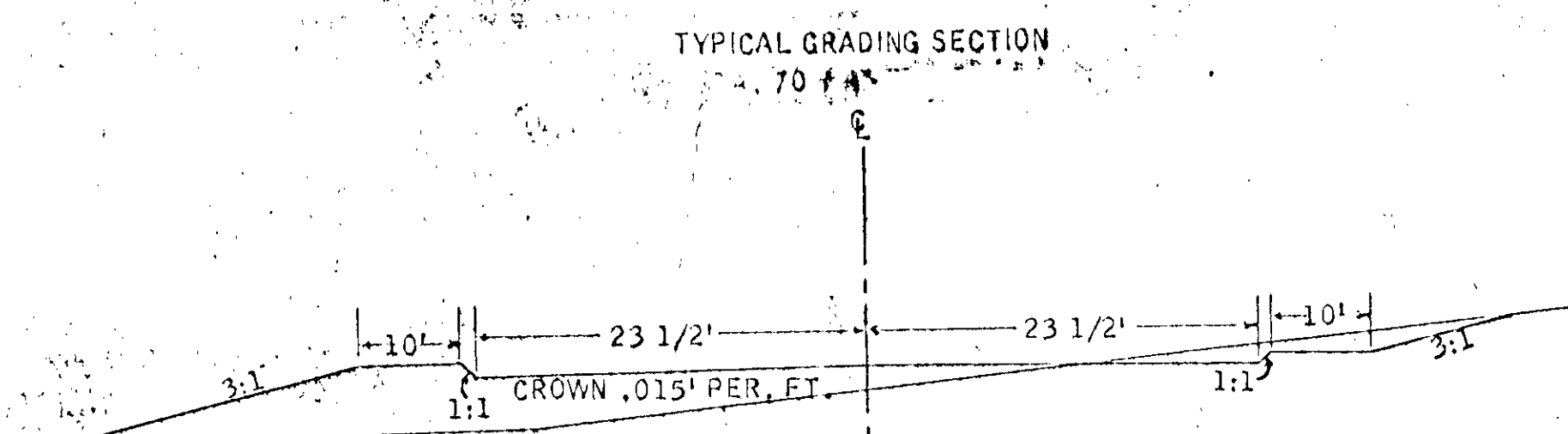
MICRO-FILMED

Anoka County, Minnesota. Plan No. \_\_\_\_\_ Sheet 1 of 15 Sheets

MICRO-FILMED

STATEMENT OF ESTIMATED QUANTITIES

ITEM NO.	ITEM	UNIT	TOTAL ESTIMATED QUANTITIES
2101.501	CLEARING	ACRE	2.78
2101.502	CLEARING	TREE	24
2101.503	GRUBBING	ACRE	2.78
2101.507	GRUBBING	TREE	26
2104.501	REMOVE PORT. CULVERTS	LIN. FT.	173
2104.502	REMOVE PAVEMENT	SQ. YD.	24
2104.504	REMOVE CURB	LIN. FT.	196
2104.506	REMOVE SIDEWALK	SQ. FT.	76
2105.501	COMMON EXCAVATION	CU. YD.	6059
2105.505	MUCK EXCAVATION	CU. YD.	13800
2105.525	TOPSOIL BORROW	CU. YD. (V.M.)	1854
2105.531	SALVAGED BITUMINOUS MIXTURE	CU. YD.	2680
2207.503	BITUMINOUS MATERIAL FOR MIXTURE	GAL.	111630
2207.512	BITUMINOUS STABILIZED SUBGRADE (6")	SQ. YD.	37210
2211.501	AGGREGATE BASE CL. 4	TON	26082
2341.504	BITUMINOUS MATERIAL FOR MIXTURE	TON	169
2341.508	WEARING COURSE MIXTURE	TON	3070
2341.518	BIT. MIXT. FOR DRIVE REPLACEMENT	TON	90
2357.502	B.T. MATL. FOR TACK COAT	GAL.	1860
2503.501	CONCRETE CURB & GUTTER DESIGN B-618	LIN. FT.	196
2501.511	18" METAL PIPE CULVERT	LIN. FT.	86
2501.512	58" SPAN METAL PIPE ARCH CULVERT	LIN. FT.	30
2501.532	18" METAL APRONS	APRON	2
2501.533	58" SPAN METAL APRONS	APRON	2
2501.536	24" CONCRETE APRONS	APRON	2
2503.502	12" REINFORCED CONCRETE SEWER CL. 4	LIN. FT.	1651
2503.502	15" REINFORCED CONCRETE SEWER CL. 4	LIN. FT.	833
2503.502	18" REINFORCED CONCRETE SEWER CL. 4	LIN. FT.	476
2503.502	24" REINFORCED CONCRETE SEWER CL. 4	LIN. FT.	1192
2506.506	CONSTRUCT MANHOLE DESIGN C OR G	LIN. FT.	13.5
2506.506	CONSTRUCT MANHOLE DESIGN A OR F	LIN. FT.	32.2
2506.507	CONSTRUCT CATCH BASINS DESIGN M	LIN. FT.	52.0
2506.509	CONSTRUCT CATCH BASIN DESIGN L, P, 4 STRUCTURE	STRUCTURE	2
2506.516	CASTING ASSEMBLY	ASSEMBLY	28
2506.522	ADJUST FRAME & RING CASTING	ASSEMBLY	21
504.674	ADJUST VALVE HOUSING	BOX, LG	12
2511.503	GROUTED RIP RAP	CU. YD.	22.2
2575.505	SODDING	SQ. YD.	22254



STORM SEWER SYSTEM

NO.	STATION	LOCATION	TYPE	DESIGN	LIN. FT.	TOP	OUTLET	CAST. ASSEM.	DRAINS TO	12" RCP SEWER CL. 4	15" RCP SEWER CL. 4	18" RCP SEWER CL. 4	24" RCP SEWER CL. 4	18" C.M.P.
1	10+75	21.5' LT.	C.B.	M 2	4.2	896.00	892.50	B	C.B.# 2				42' FAP	
2	10+75	21.5' RT.	C.B.	M	4.2	896.00	892.00	B	OUTLET				6' FAP	
3	18+62	23.7' LT.	C.B.	LP 4	1.1	897.34	893.34	C	OUTLET					38"
4	18+62	23.7' RT.	C.B.	LP 4	5.8	897.34	893.34	C	OUTLET					48"
5	37+00	21.5' LT.	C.B.	M	2.3	906.00	904.40	B	M.H.# 7					46'
6	36+75	21.5' RT.	C.B.	M	3.7	906.00	903.00	B	M.H.# 7					26'
7	37+00	24.0' RT.	M.H.	C OR G	3.5	906.25	902.80	A	EXIST.			476'		
8	37+55	21.5' RT.	C.B.	M	4.1	906.40	903.00	B	M.H.# 7					56'
9	53+25	21.5' LT.	C.B.	M	2.8	911.67	909.60	B	C.B.# 10					44'
10	53+25	21.5' RT.	C.B.	M	3.9	911.70	908.50	B	M.H.# 10A					72'
10A	54+05	11' RT.	M.H.	C OR G	3.7	912.07	908.59	A	M.H.# 12			290'		
11	54+05	21.5' RT.	C.B.	M	3.4	911.85	908.45	B	C.B.# 10A			12'		
12	56+75	11' RT.	M.H.	A OR F	5.0	912.52	907.52	A	M.H.# 13			435'		
13	61+30	11' RT.	M.H.	A OR F	4.8	911.02	906.21	A	M.H.# 16			422'		
14	65+52	21.5' LT.	C.B.	M	2.4	909.33	907.60	B	M.H.# 16			32'		
15	65+52	21.5' RT.	C.B.	M	5.0	909.33	904.98	B	M.H.# 16			12'		
16	65+52	11' RT.	M.H.	A OR F	4.7	909.62	904.90	A	M.H.# 17			56'		
17	66+08	11' RT.	M.H.	A OR F	4.7	909.52	904.79	A	M.H.# 20				335'	
18	66+25	21.5' LT.	C.B.	M	2.3	909.20	907.60	B	M.H.# 20			32'		
19	66+25	21.5' RT.	C.B.	M	5.0	909.20	904.95	B	M.H.# 20			12'		
20	66+25	11' RT.	M.H.	A OR F	4.6	909.53	904.90	A	M.H.# 17				13'	
21	70+45	11' RT.	M.H.	A OR F	4.1	909.59	905.42	A	M.H.# 20			420'		
22	74+45	11' RT.	M.H.	C OR G	2.5	908.54	906.05	A	M.H.# 21			400'		
23	74+45	21.5' LT.	C.B.	M	2.9	908.30	906.15	B	M.H.# 22			32'		
24	74+45	21.5' RT.	C.B.	M	2.9	908.30	906.15	B	M.H.# 22			12'		
25	75+05	21.5' RT.	C.B.	M	2.9	908.40	906.25	B	M.H.# 22			60'		
26	66+08	33' RT.	M.H.	C OR G	3.8	908.00	904.22	A	M.H.# 27				335'	
27	66+08	67' RT.	M.H.	A OR F	4.3	908.00	903.72	A	M.H.# 28				474' FAP	
28	66+08	115' RT.	APR.				903.22		OUTLET					

ITEM	STATION	LOCATION
M.H.	16+97	24' LT.
M.H.	22+22	22' LT.
M.H.	29+62	21' LT.
M.H.	36+26	20' LT.
M.H.	43+15	28' LT.
M.H.	44+25	22' LT.
M.H.	47+56	26' LT.
M.H.	51+90	29' LT.
M.H.	52+19	21' LT.
M.H.	56+91	22' LT.
M.H.	57+06	21' RT.
M.H.	59+60	21' LT.
M.H.	60+59	21' RT.
M.H.	64+13	21' RT.
M.H.	64+35	21' LT.
M.H.	67+47	31' RT.
M.H.	69+07	31' RT.
M.H.	70+35	19' LT.
M.H.	76+25	19' LT.
M.H.	79+88	35' LT.
M.H.	81+45	31' LT.

KEY-GRADE	FRAME	COVER
A	700-7	712
B	812	803
C	790-2	712

STATION	LOCATION
11+93	22' LT.
28+69	32' LT.
34+03	31' RT.
43+55	34' RT.
43+58	34' LT.
48+47	34' LT.
53+50	31' RT.
67+13	29' LT.
67+75	25' RT.
74+99	35' RT.
82+59	25' RT.
82+71	25' RT.

THE PROVISION OF 1903 SHALL NOT APPLY TO THESE ITEMS.  
 1. ALL AREAS TO BE SODDED SHALL BE COVERED WITH A MINIMUM OF 3 INCHES OF TOPSOIL.  
 NOTE: CROSS SECTIONS ARE TO BE CONSTRUCTED IN CONFORMANCE WITH TYPICAL SECTIONS ON THIS PAGE.  
 NOTE: ALL DIMENSIONS AND SLOPES SHOWN ON TYPICAL SECTIONS ARE APPROXIMATELY ONLY.  
 NOTE: WORKING AROUND MISC. UTILITY POLES WILL BE CONSIDERED INCIDENTAL TO COMMON EXCAVATION.  
 2. SOD ALL DISTURBED AREAS AS DIRECTED BY ENGINEER.

CLEARING & GRUBBING				
STATION	CL. TREE	GB. TREE	CL. ACRE	GR. ACRE
14+20	LT			
14+50	LT			
27+15	LT			
30+90	RT	2		
42+50	RT			
44+20	RT			
45+70	RT			
49+50	RT			
49+80	RT			
58+30	RT			
58+25	LT			
59+35	RT			
60+10	RT	2		
61+36	LT			
63+90	RT			
67+70	RT			
76+40	LT			
78+20	RT			
82+10	RT			
PIERCE ST.	5	5	2.78	2.78
TOTAL	24	26	2.78	2.78

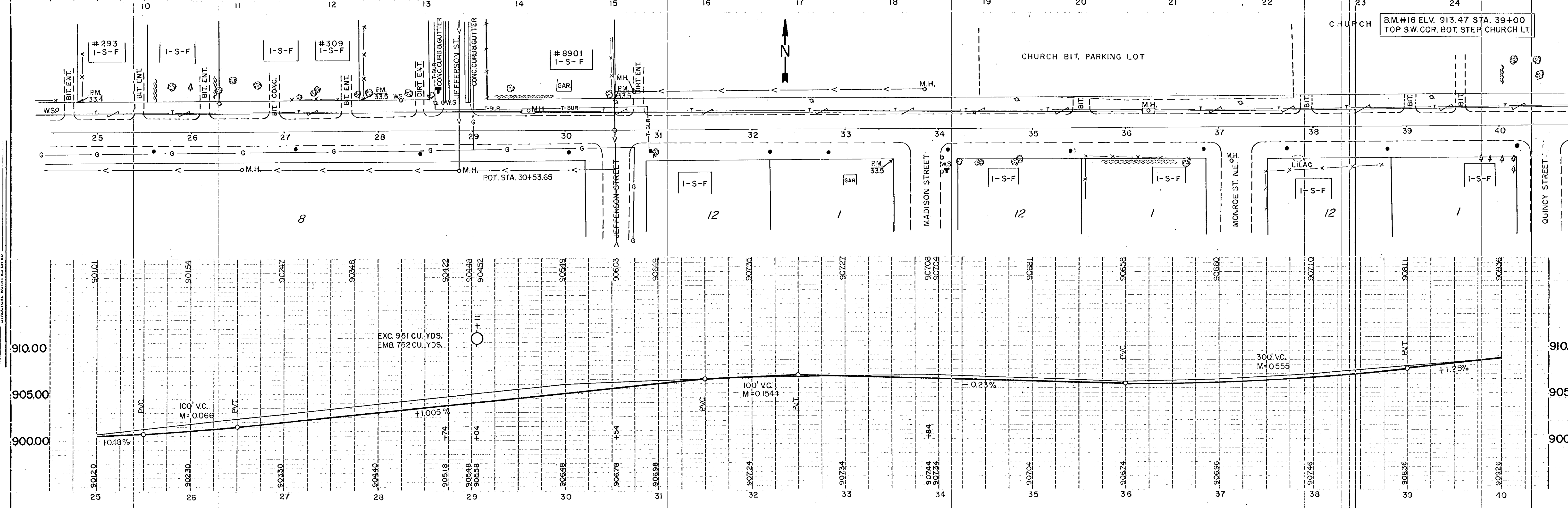
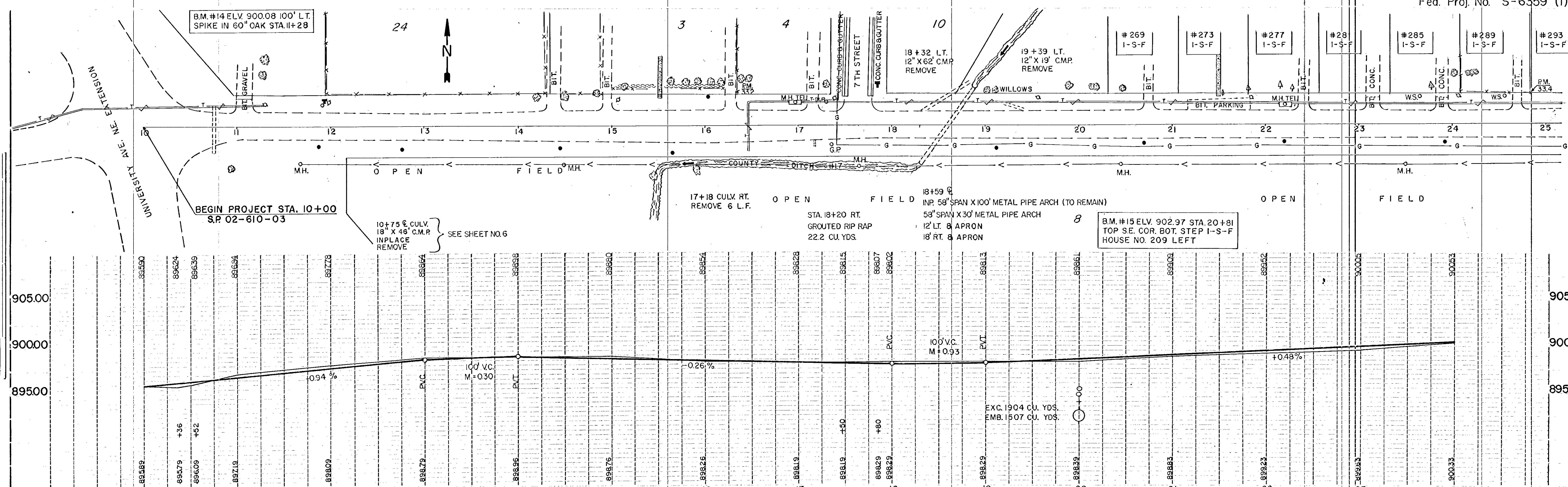
The following Standard Detail plates, approved by the Bureau of Public Roads, shall apply on this project.

PLATE NO.	DESCRIPTION
3000 F	REINFORCED CONCRETE PIPE
4006 A	GASKET JOINT FOR R.C. PIPE
3100 E	CONCRETE APRON FOR R.C. PIPE
3122 E	METAL APRON FOR C.M. PIPE ARCH CULVERT
3123 E	METAL APRON FOR C.M. PIPE
3040 C	CORRUGATED METAL PIPE
4000 G	MANHOLES OR CATCH BASINS
4002 D	MANHOLES OR CATCH BASINS
4005 H	MANHOLES OR CATCH BASINS
4006 F	MANHOLES OR CATCH BASINS
4013 A	CATCH BASINS
4021 A	PRECAST CURB OPENING CATCH BASIN
4101 B	RING CASTING FOR MANHOLE
4108 C	AUC. CASTING FOR M.H. RING EXTENTION
4110 P	COVER CASTING FOR MANHOLE
4130 A	C.B. FRAME & GRATE CASTING
4180 F	MANHOLE STEP CASTING
7100 D	CONCRETE CURB AND GUTTERS
8000 C	STANDARD BARRICADES
8008 C	CONTRACTORS SIGN
0001 A	SPECIFICATION REFERENCE TO STANDARD PLATES

BASIS OF PLANNED QUANTITIES  
 2207 BITUMINOUS STABILIZED SUBGRADE  
 BITUMINOUS MATERIAL FOR MIX 0.5 GAL. PER SQ. YD. PER INCH THICKNESS  
 BITUMINOUS MATERIAL FOR FOG 0.10 GAL. PER SQ. YD.  
 2341 PLANT MIXED BITUMINOUS WEARING COURSE  
 BITUMINOUS MIXTURE 165 LBS. PER SQ. YD.  
 BITUMINOUS MATERIAL FOR TACK COAT 0.05 GAL. PER SQ. YD.  
 BITUMINOUS MATERIAL 5.5% OF MIXTURE BY WT.

NOTE: THE EMBANKMENT SHALL BE COMPACTED BY THE ORDINARY COMPACTION AS PROVIDED IN 2105.3F22, EXCEPT THAT THE COMPACTING SHALL BE ACCOMPLISHED BY AN APPROVED VIBERATING COMPACTOR. THE COMPACTOR SHALL HAVE AN EMPTY WEIGHT OF NOT LESS THAN 3 TONS AND A DRUM OF NOT LESS THAN 30 INCHES IN DIAMETER NOR LESS THAN 40 INCHES IN LENGTH.

NOTE: THE UPPER 1.0' OF NATURAL SOIL IS CONSIDERED UNSUITABLE FOR USE IN THE UPPER 1.0' OF ROADWAY. THIS PORTION SHALL BE PLACED BELOW THE UPPER 1.0' OF EMBANKMENT DURING CONSTRUCTION.



1" = 40' HORIZONTAL  
 1" = 4' VERTICAL  
 ALL DIMENSIONS UNLESS OTHERWISE NOTED  
 ALL SPACING UNLESS OTHERWISE NOTED

1" = 40' HORIZONTAL  
 1" = 4' VERTICAL  
 ALL DIMENSIONS UNLESS OTHERWISE NOTED  
 ALL SPACING UNLESS OTHERWISE NOTED

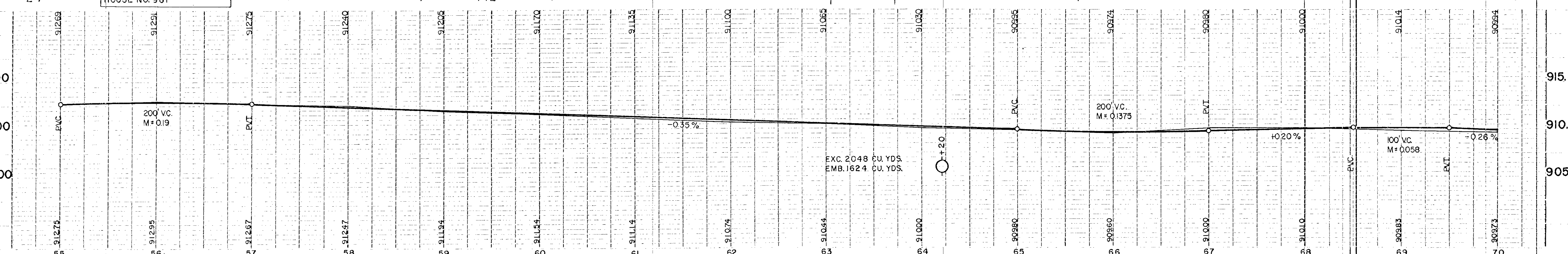
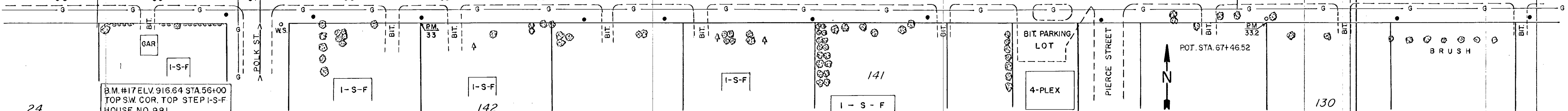
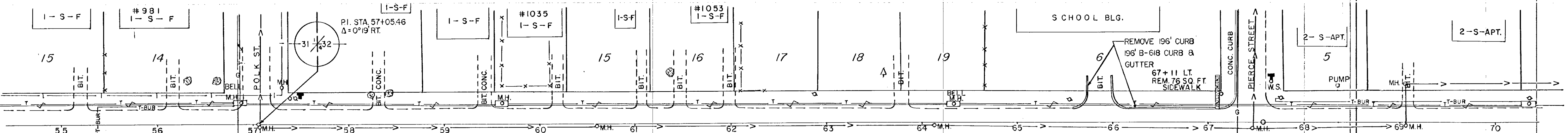
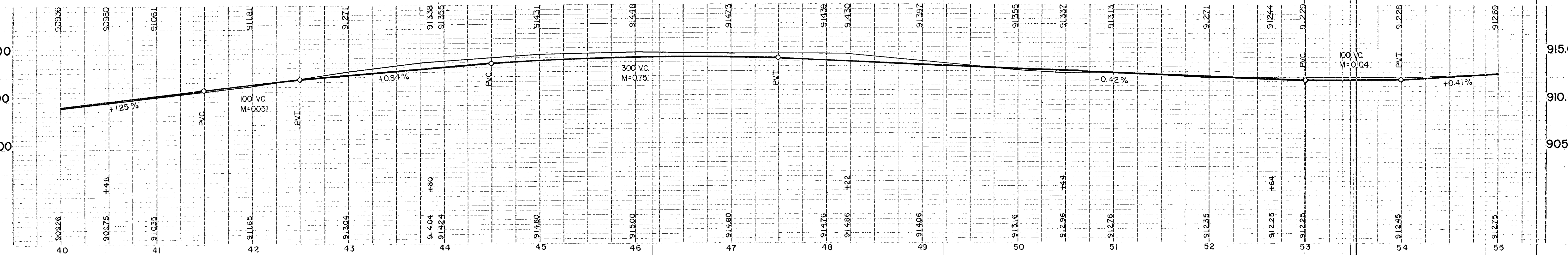
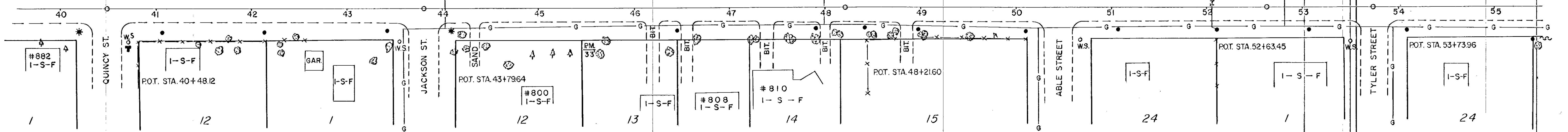
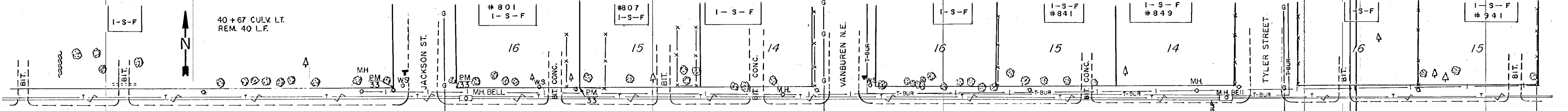
B.M. #14 ELV. 900.08 100' LT. SPIKE IN 60" OAK STA. 11+28

BEGIN PROJECT STA. 10+00 S.P. 02-610-03

10+75 CULV. 18" X 46" C.M.P. INPLACE REMOVE SEE SHEET NO. 6

B.M. #15 ELV. 902.97 STA. 20+81 TOP SE. COR. BOT. STEP I-S-F HOUSE NO. 209 LEFT

B.M. #16 ELV. 913.47 STA. 39+00 TOP S.W. COR. BOT. STEP CHURCH LT.



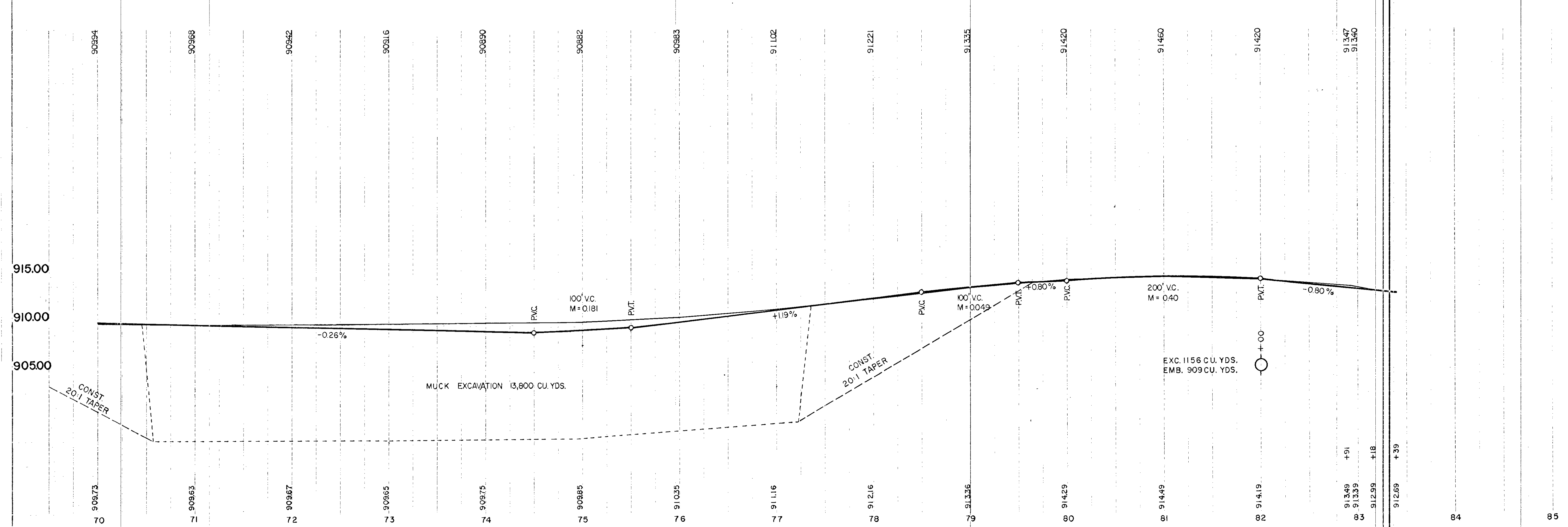
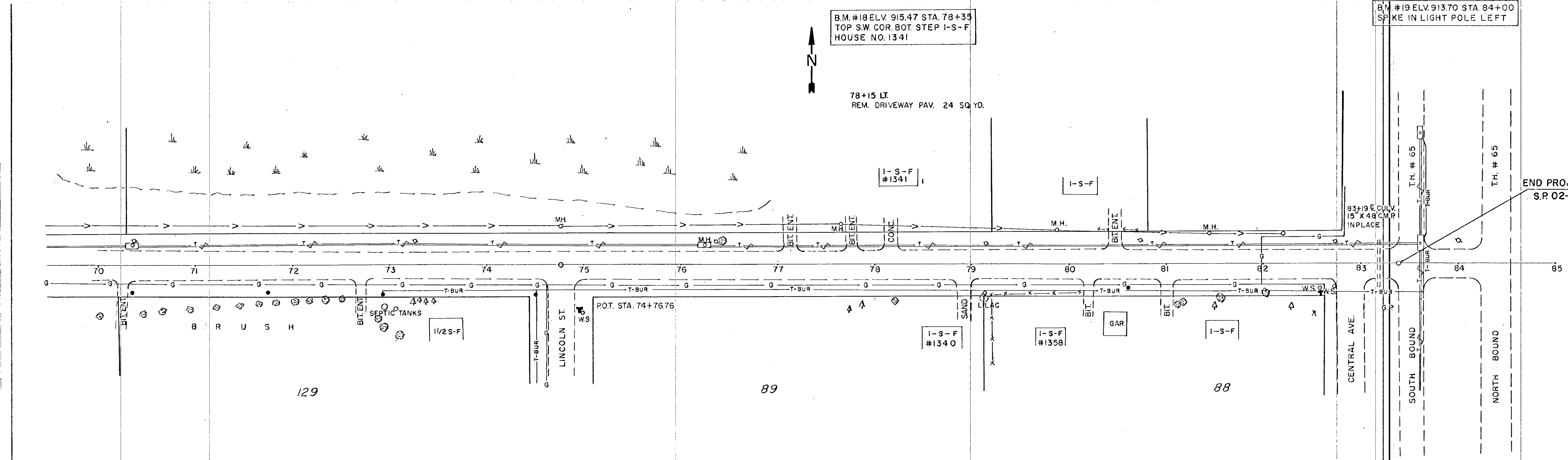
B.M. #17 ELV. 916.64 STA. 56+00  
TOP SW. COR. TOP STEP I-S-F  
HOUSE NO. 981

EXC. 2048 CU. YDS.  
EMB. 1624 CU. YDS.

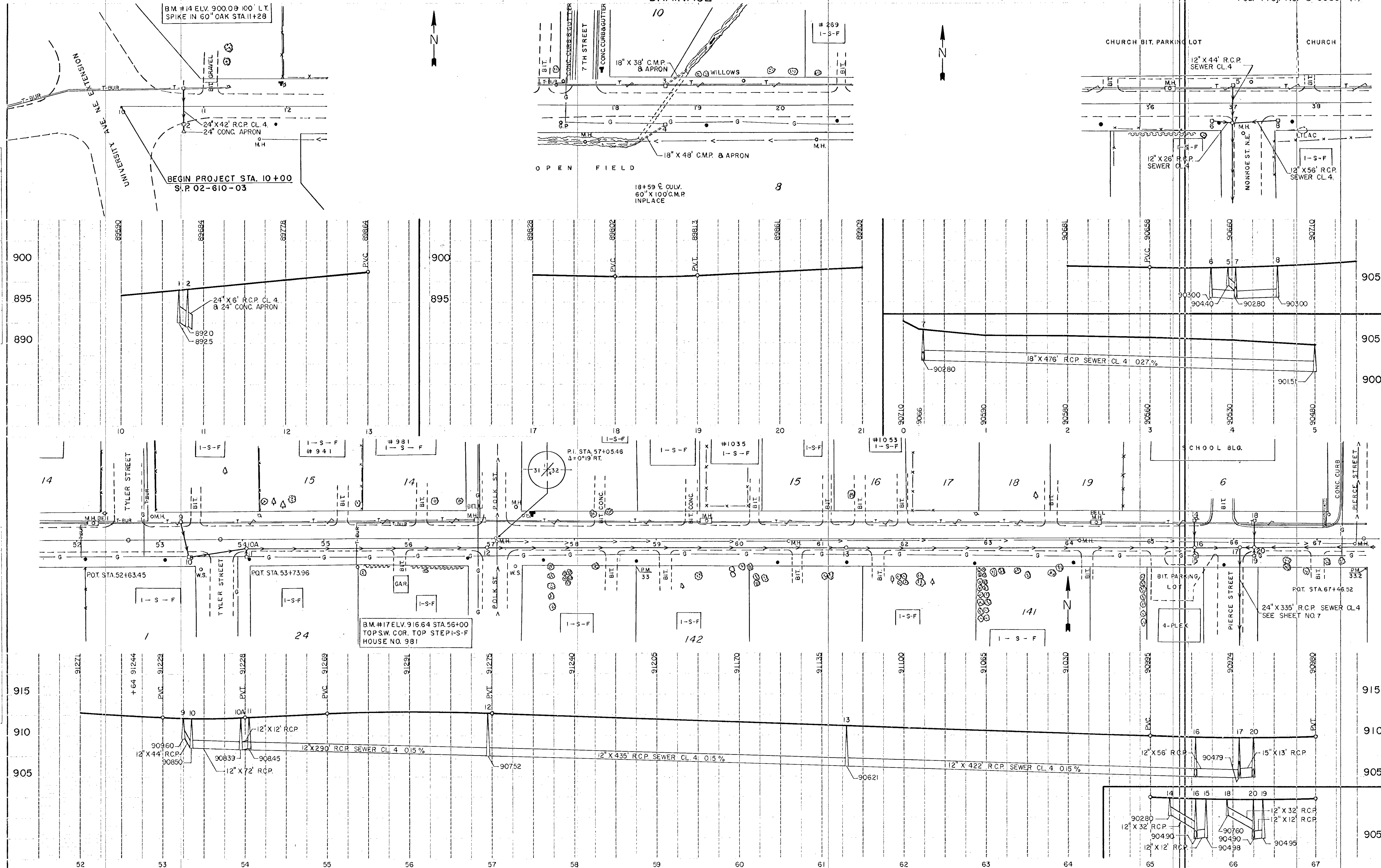
B.M. #18 ELV. 915.47 STA. 78+35  
TOP S.W. COR. BOT. STEP I-S-F  
HOUSE NO. 1341

B.M. #19 ELV. 913.70 STA. 84+00  
SP. KE IN LIGHT POLE LEFT

78+15 LT.  
REM. DRIVEWAY PAV. 24 SQ. YD.



DRAINAGE



3. ALL WORK SHALL BE IN ACCORDANCE WITH THE STANDARD SPECIFICATIONS FOR PUBLIC WORKS, LATEST EDITION, AS ADOPTED BY THE BOARD OF SUPERVISORS OF THE COUNTY OF SAN JOAQUIN, CALIFORNIA.

4. ALL WORK SHALL BE IN ACCORDANCE WITH THE STANDARD SPECIFICATIONS FOR PUBLIC WORKS, LATEST EDITION, AS ADOPTED BY THE BOARD OF SUPERVISORS OF THE COUNTY OF SAN JOAQUIN, CALIFORNIA.

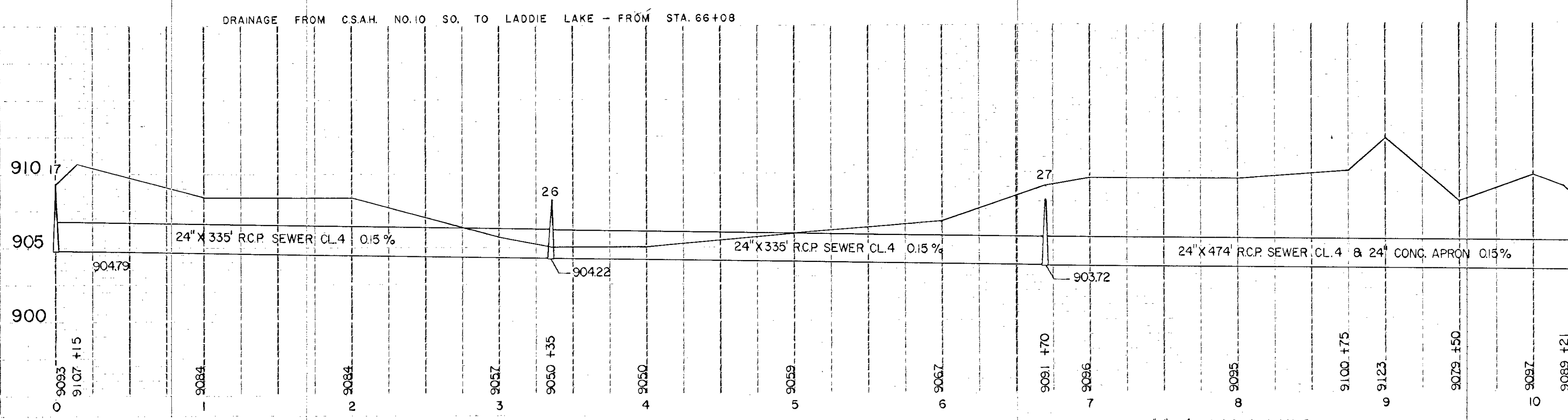
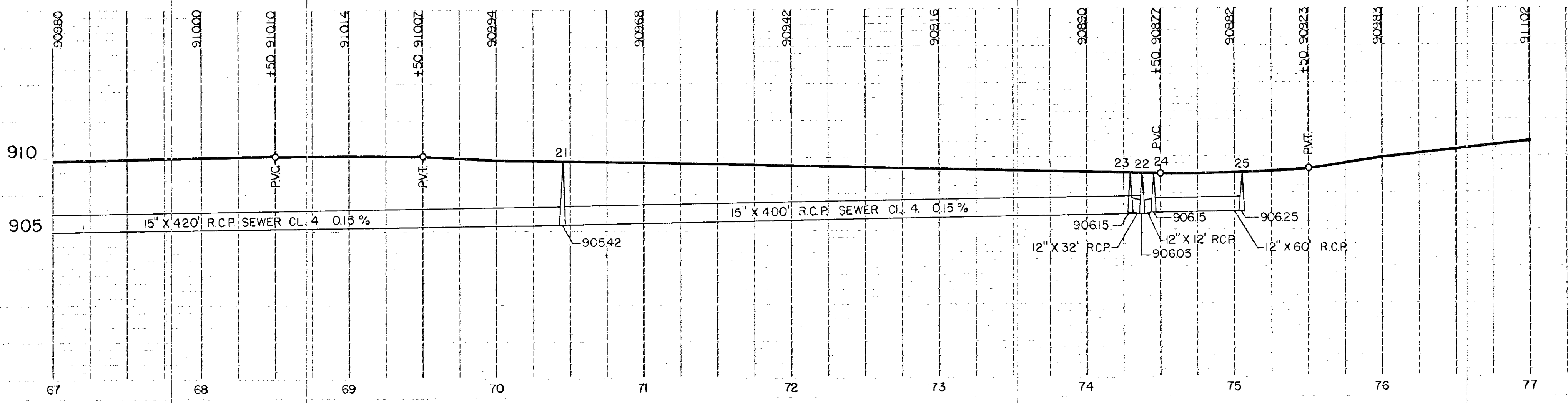
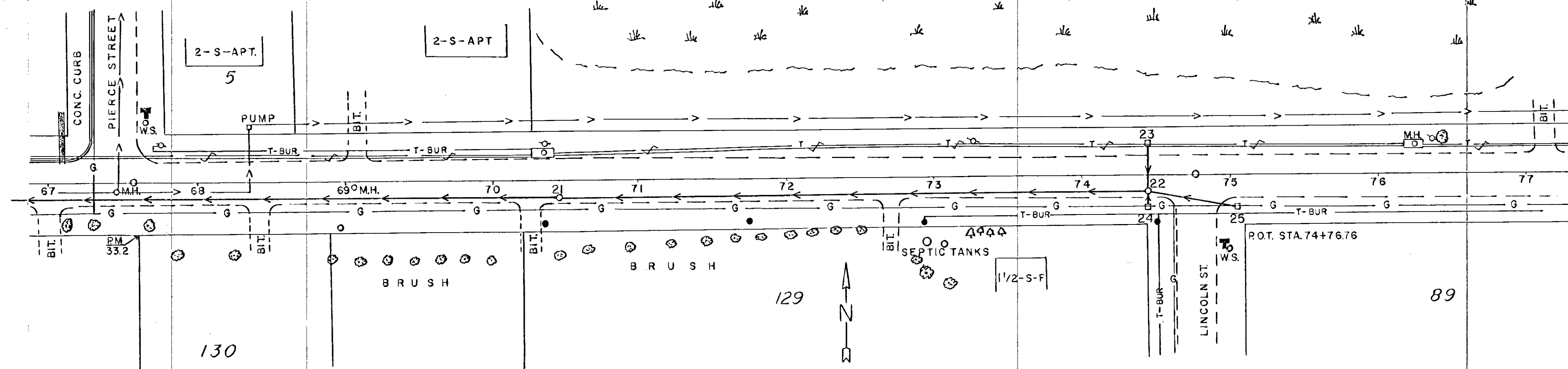
BM #14 ELV. 900.09 100' LT. SPIKE IN 60' OAK STA. 11+28

BEGIN PROJECT STA. 10+00 S.P. 02-610-03

BM #17 ELV. 916.64 STA. 56+00 TOP S.W. COR. TOP STEP-I-S-F HOUSE NO. 981

P.I. STA. 57+05.46 Δ=0°19' RT.

DRAINAGE



NOTE: SEE SHEET 6 FOR PLAN VIEW OF SEWER LINES FROM STA. 66+08 TO STA. 67+00.

NOTE: SEE SHEET 6 FOR PLAN VIEW OF SEWER LINES FROM STA. 66+08 TO STA. 67+00.

ENGINEER

EXCAVATION EMBANKMENT

SUB-TOTALS CU. CU. SUB-TOTALS  
 YDS. YDS.

EXCAVATION EMBANKMENT  
 SUB-TOTALS CU. CU. SUB-TOTALS  
 YDS. YDS.

13+00 898.8

17+80 898.3

26 0

141 0

12+00 898.1

17+50 898.2

50 0

141 41

11+00 897.2

17+00 898.2

26 22

108 125

10+52 896.1

16+00 898.3

481 417

152 100

10+36 895.8

15+00 898.8

320 222

21 20

10+00 895.9

14+00 899.0

69 37

16 0

78 0

STA. 13+00 26 0

DATE	
BY	
DESIGNED	
DRAWN	
CHECKED	
IN CHARGE	
NO.	

DATE	
BY	
DESIGNED	
DRAWN	
CHECKED	
IN CHARGE	
NO.	



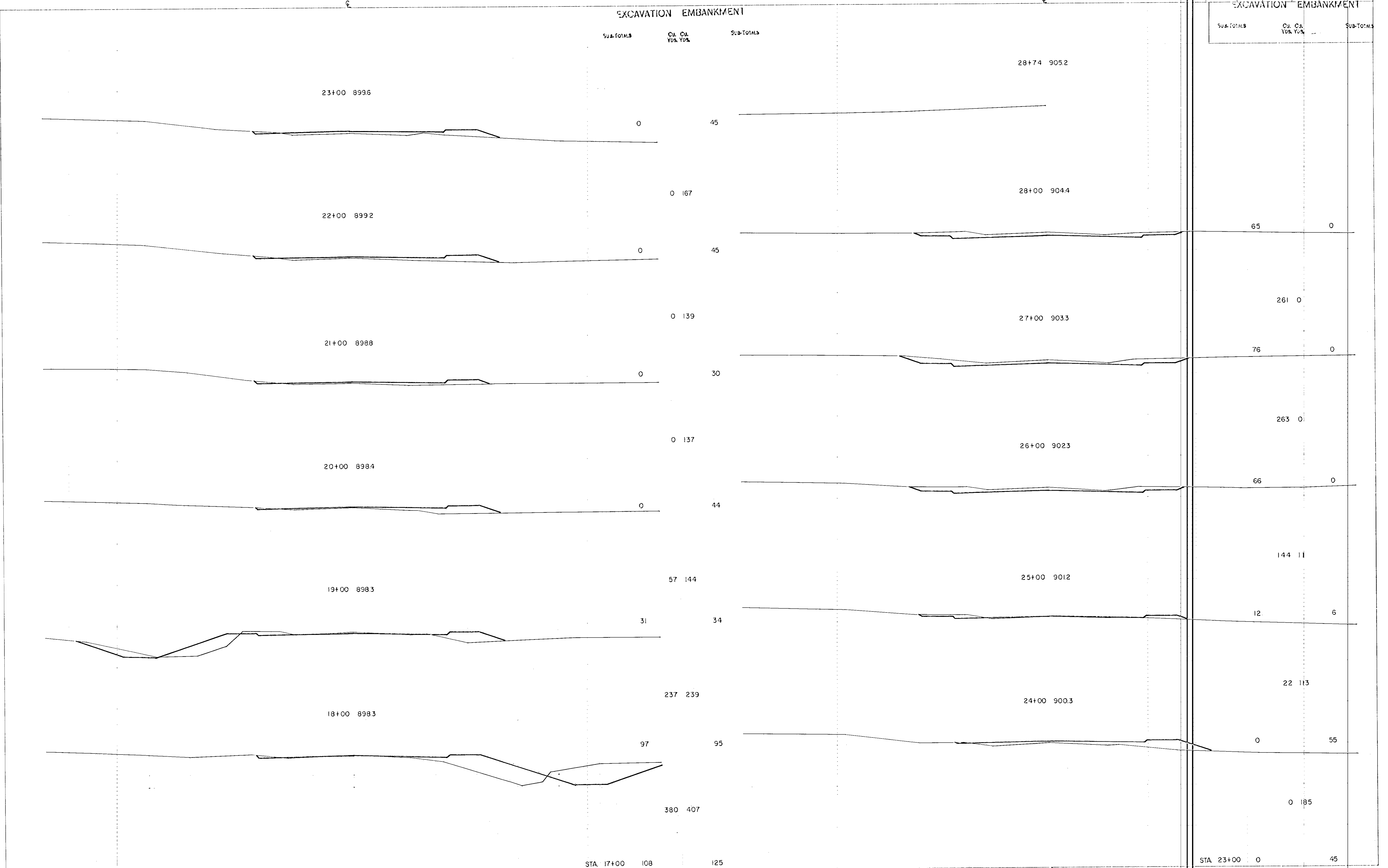
EXCAVATION EMBANKMENT

EXCAVATION EMBANKMENT

SUB-TOTALS	CU. CU. YDS. YDS.	SUB-TOTALS
------------	-------------------	------------

DATE	
BY	
DESIGNED	
PLOTTED	
TEMPLATE	
NOTE BOOK NO.	
AREAS CHECKED	

DATE	
BY	
DESIGNED	
PLOTTED	
TEMPLATE	
NOTE BOOK NO.	
AREAS CHECKED	



STA. 17+00 108 125

STA. 23+00 0 45

FED. ROAD DIST. NO.	STATE	FEDERAL PROJ. NO.	FISCAL YEAR	SHEET NO.	TOTAL SHEETS
---------------------	-------	-------------------	-------------	-----------	--------------

EXCAVATION EMBANKMENT

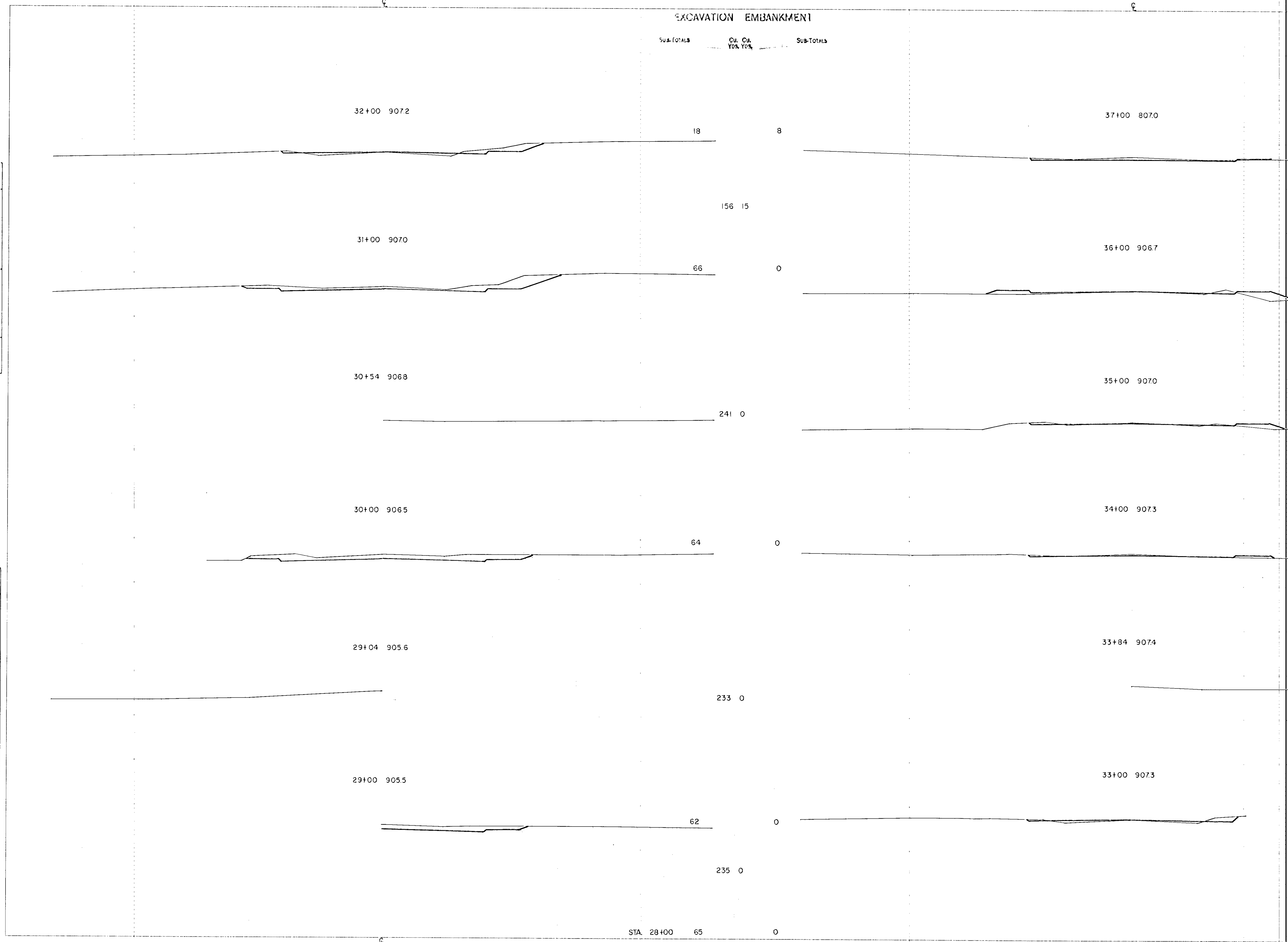
SUB-TOTALS      Cu. Cu.      SUB-TOTALS  
YDS. YDS.

EXCAVATION EMBANKMENT

SUB-TOTALS      Cu. Cu.      SUB-TOTALS  
YDS. YDS.

DATE	
BY	
NO.	
DATE	
BY	
NO.	
DATE	
BY	
NO.	

DATE	
BY	
NO.	
DATE	
BY	
NO.	
DATE	
BY	
NO.	



STA. 28+00      65      0

STA. 32+00      18      8

FUNCTIONAL CROSS SECTION - OPEN DOTTED  
PROJ. CO. - WINNAPOLIS - ST. PAUL

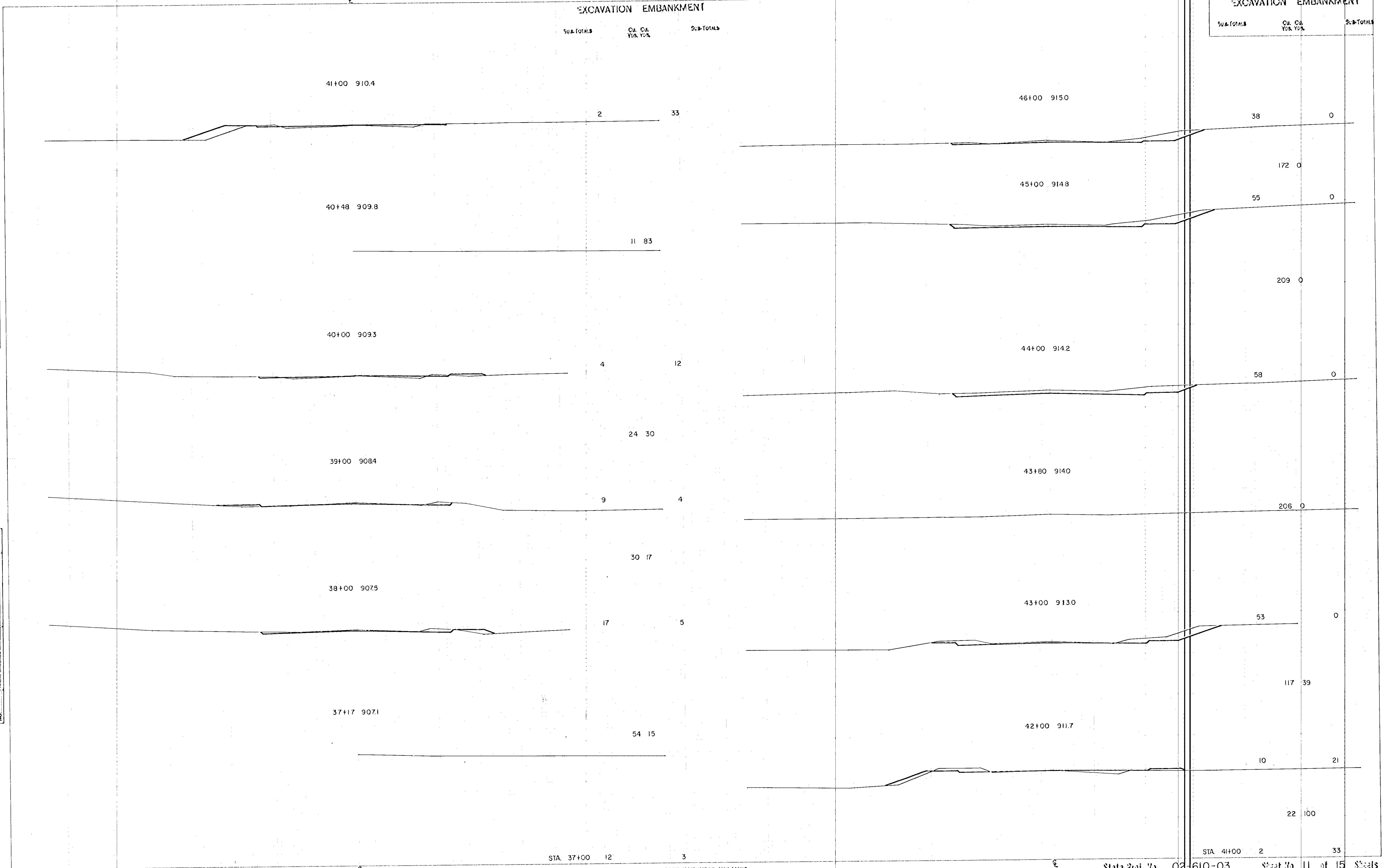
FED. ROAD DIST. NO.	STATE	FEDERAL PROJ. NO.	FISCAL YEAR	SHEET NO.	TOTAL SHEETS

EXCAVATION EMBANKMENT

Sub-TOTALS      Cu. Cu. Yds. Yds.      Sub-TOTALS

DATE	
BY	
SURVEYED	
PLOTTED	
TEMPLATE	
NOTE BOOK	
AREAS CHECKED	
NO.	

DATE	
BY	
SURVEYED	
PLOTTED	
TEMPLATE	
NOTE BOOK	
AREAS CHECKED	
NO.	



STA. 37+00 12      3

STA. 41+00 2      33

FUNCTIONAL CROSS SECTION - OPEN DOTTED  
REGIONS CO. - MINNEAPOLIS - ST. PAUL

FED. ROAD DIST. NO.	STATE	FEDERAL PROJ. NO.	FISCAL YEAR	SHEET NO.	TOTAL SHEETS

EXCAVATION EMBANKMENT

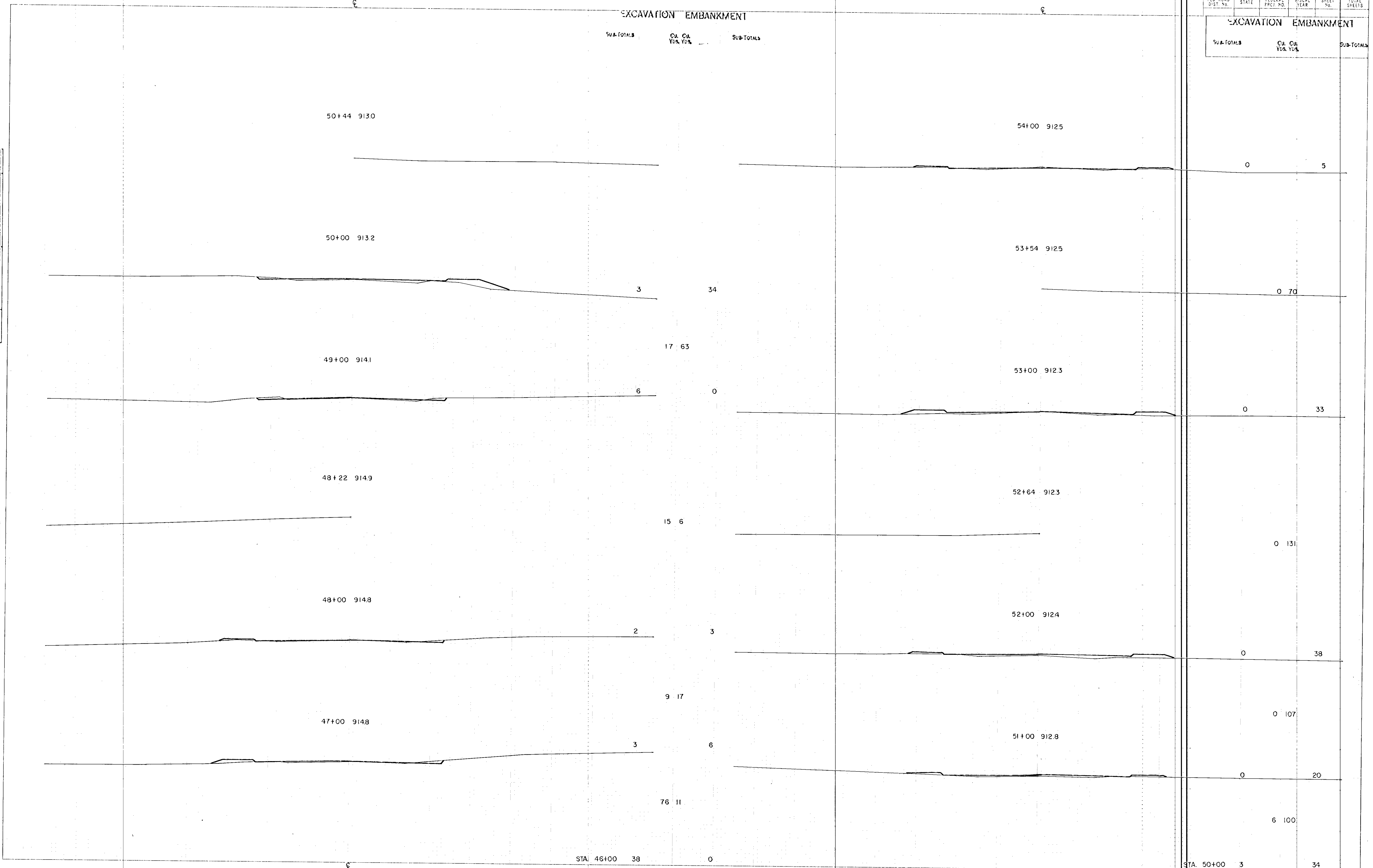
SUB-TOTALS CU. CU. YES, YDS. SUB-TOTALS

EXCAVATION EMBANKMENT

SUB-TOTALS CU. CU. YES, YDS. SUB-TOTALS

DATE	BY	NO.

DATE	BY	NO.



STA. 46+00 38 0

STA. 50+00 3 34

FUNCTIONAL CROSS SECTION - OPEN EMBANKMENT  
PROJECT NO. - MINNEAPOLIS - ST. PAUL

FED. ROAD DIST. NO.	STATE	FEDERAL PROJ. NO.	FISCAL YEAR	SHEET NO.	TOTAL SHEETS
---------------------	-------	-------------------	-------------	-----------	--------------

EXCAVATION EMBANKMENT

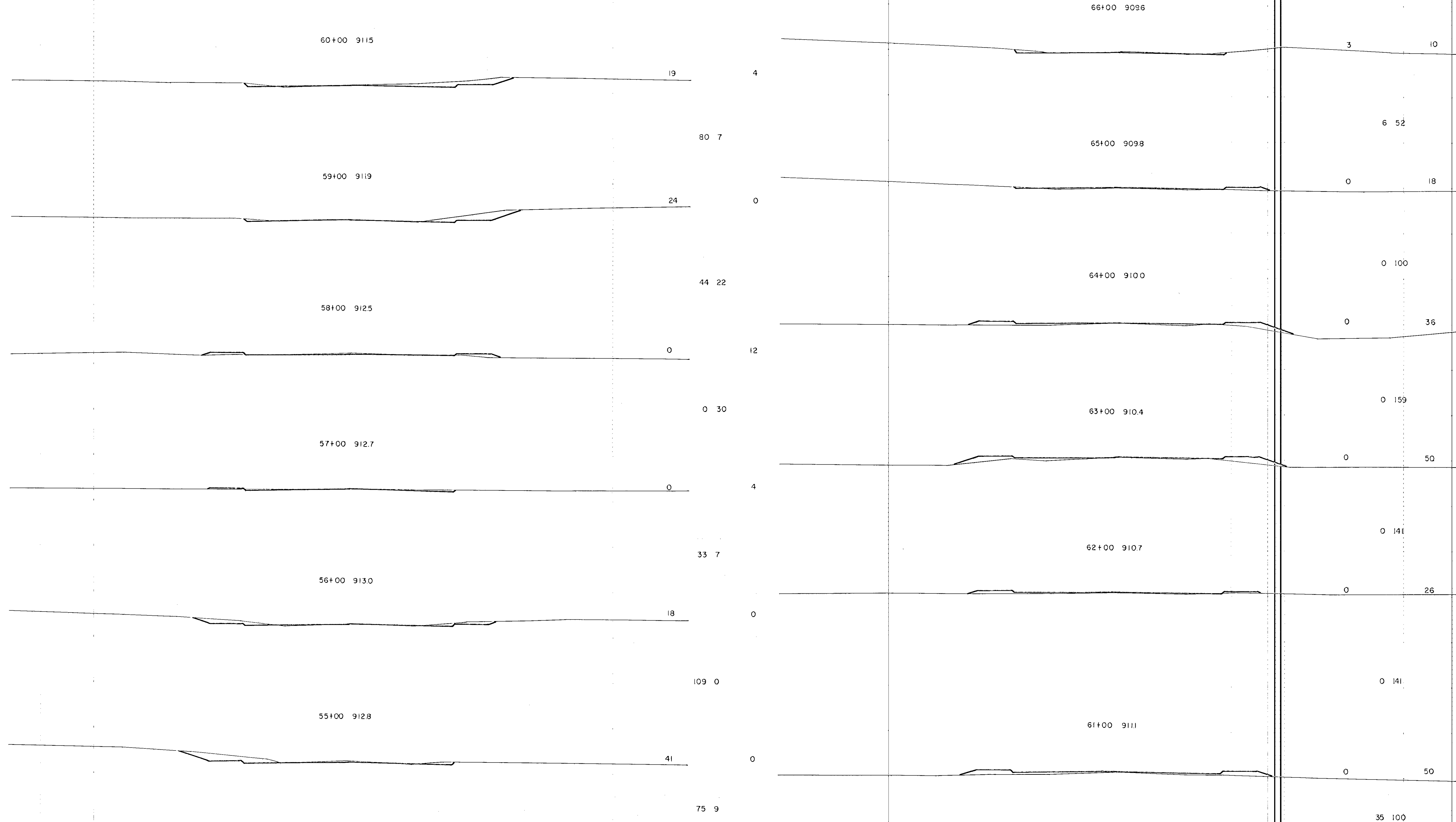
SUB-TOTALS	CU. YDS.	CU. YDS.	SUB-TOTALS
------------	----------	----------	------------

EXCAVATION EMBANKMENT

SUB-TOTALS	CU. YDS.	CU. YDS.	SUB-TOTALS
------------	----------	----------	------------

DATE	BY	INITIAL	SURVEYED	PLOTTED	AREA CHECKED
NO. BOOK	NO. SHEET	NO. SHEET	NO. SHEET	NO. SHEET	NO. SHEET

DATE	BY	INITIAL	SURVEYED	PLOTTED	AREA CHECKED
NO. BOOK	NO. SHEET	NO. SHEET	NO. SHEET	NO. SHEET	NO. SHEET



STA. 54+00 0 5

FUNCTIONAL CROSS SECTION - OPEN DOTTED  
ROUTE CO. - MINNEAPOLIS - ST. PAUL

STA. 60+00 19 4

FED. ROAD DIST. NO.	STATE	FEDERAL PROJ. NO.	FISCAL YEAR	SHEET NO.	TOTAL SHEETS

EXCAVATION EMBANKMENT

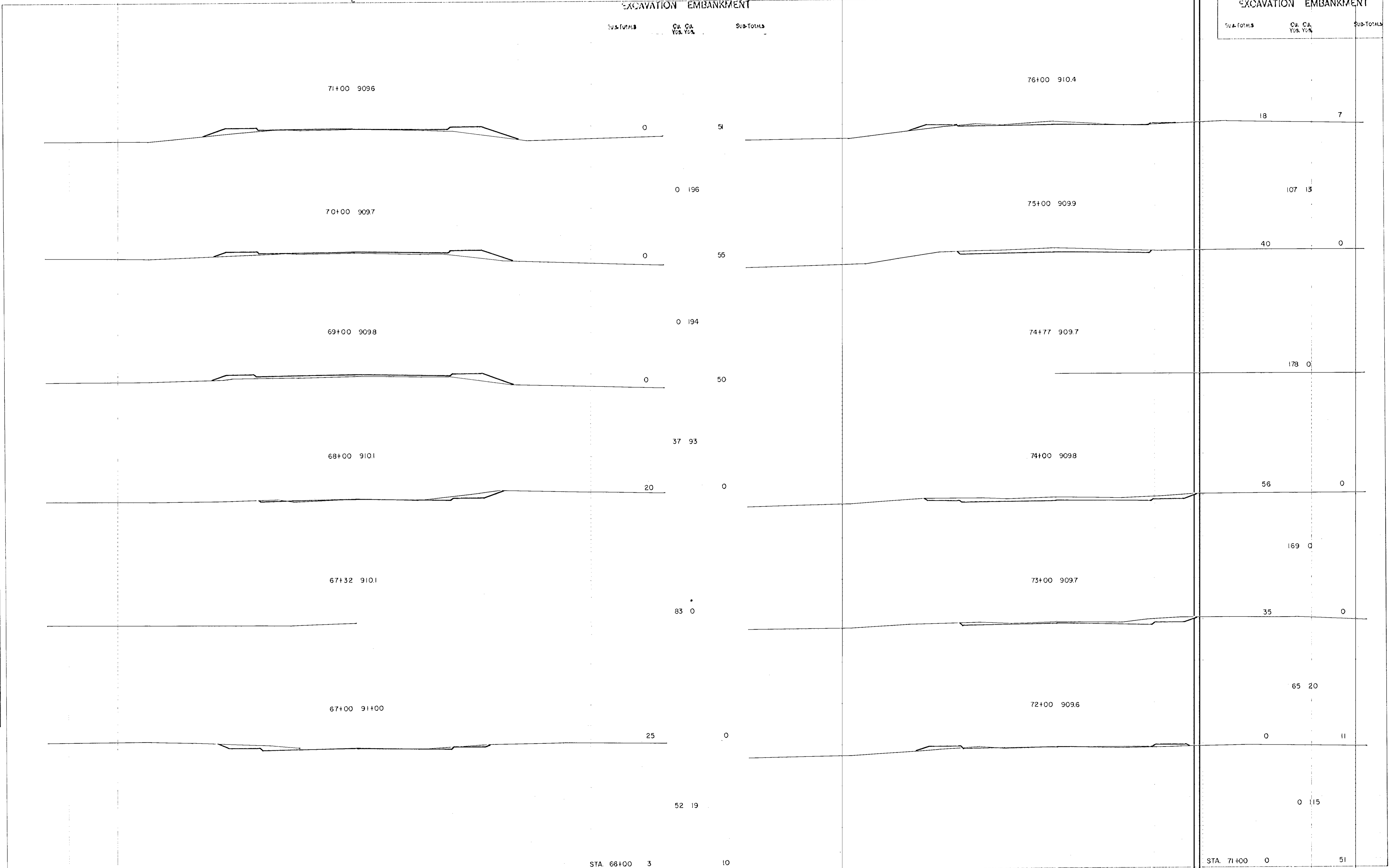
Sub-TOTALS Cu. Cu. Yds. Yds. Sub-TOTALS

EXCAVATION EMBANKMENT

Sub-TOTALS Cu. Cu. Yds. Yds. Sub-TOTALS

DATE	BY
DATE	BY
DATE	BY
DATE	BY
DATE	BY

DATE	BY
DATE	BY
DATE	BY
DATE	BY
DATE	BY



STA. 66+00 3 10

STA. 71+00 0 51

REINFORCEMENT CROSS SECTION - OPEN DISTED  
ROCKS CO. - MINNEAPOLIS - ST. PAUL

FED. ROAD DIST. NO.	STATE	FEDERAL PROJ. NO.	FISCAL YEAR	SHEET NO.	TOTAL SHEETS
---------------------	-------	-------------------	-------------	-----------	--------------

EXCAVATION EMBANKMENT

SUB-TOTALS	CU. YDS.	CU. YDS.	SUB-TOTALS
------------	----------	----------	------------

EXCAVATION EMBANKMENT

SUB-TOTALS	CU. YDS.	CU. YDS.	SUB-TOTALS
------------	----------	----------	------------

81+00 9145

5 14

83+39 9127

80+00 9143

38 0

83+18 9130

79+00 9134

22 12

83+00 9134

78+00 9122

35 0

82+91 9135

77+00 9112

2 5

82+00 9142

37 22

25 0

STA 76+00 18 7

STA 81+00 5 14

DATE	BY	DATE	BY

DATE	BY	DATE	BY