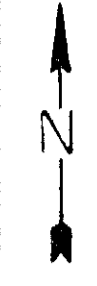
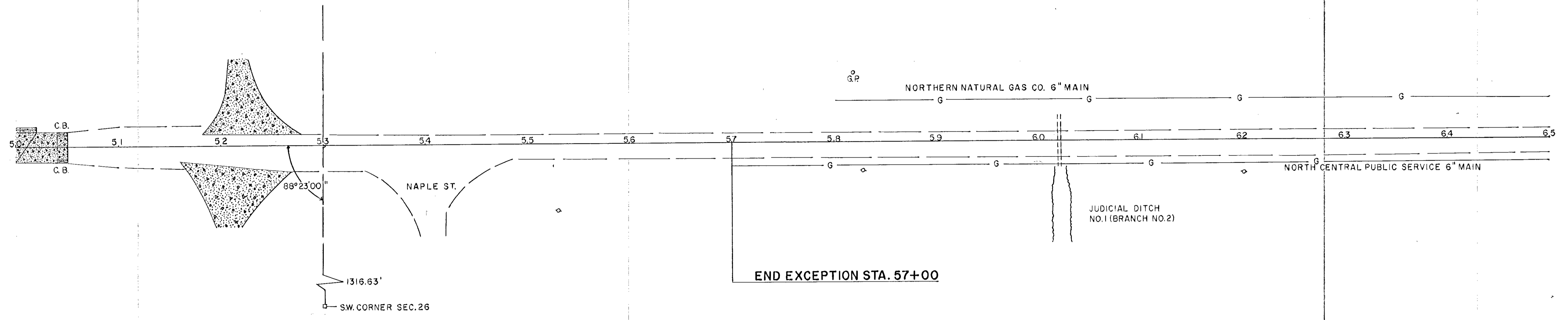


TITLE BLOCK  
 PROJECT NO. 02-610-04  
 SHEET NO. 5 OF 21 SHEETS  
 DATE: 02-10-04

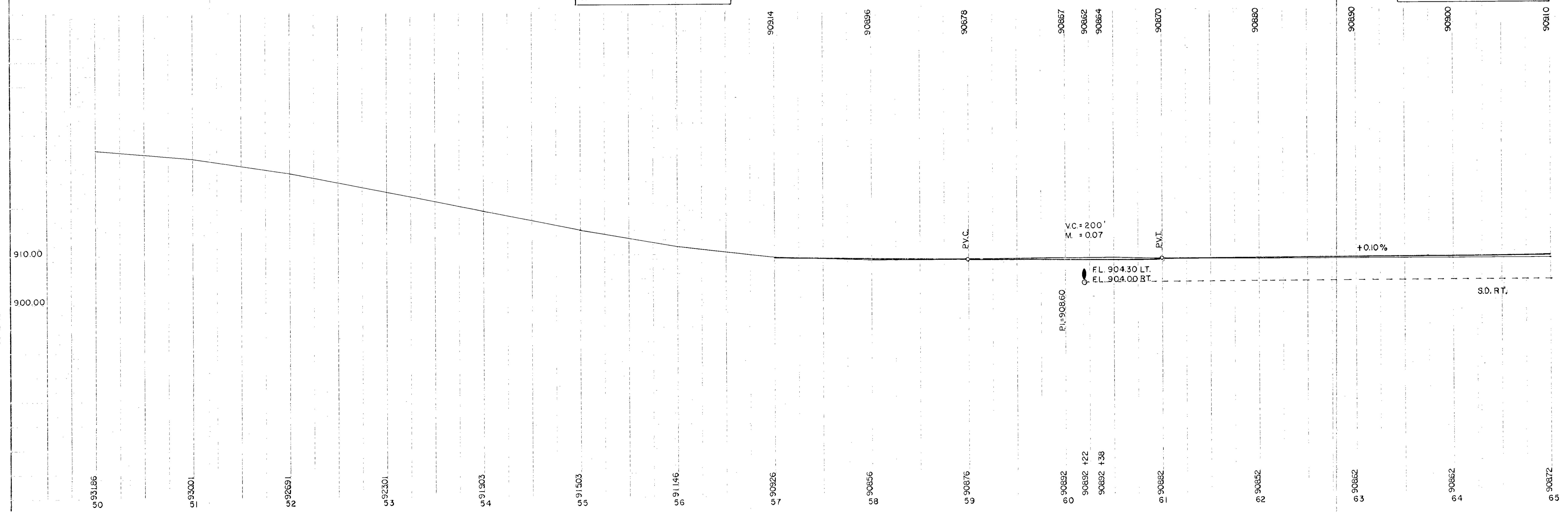


STA 60+22 C  
 INP 36' X 50' C.M.P.  
 REMOVE  
 44' SPAN X 58' R.C.P.  
 2 APRONS



B.M.#10 ELEV. 909.02 STA. 55+30  
 SPIKE IN P.P. RIGHT 65' FT. OUT

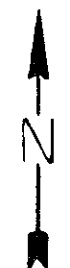
B.M.#11 ELEV. 907.94 STA. 65+22  
 SPIKE IN P.P. RT. 31' OUT



TITLE BLOCK  
 PROJECT NO. 02-610-04  
 SHEET NO. 5 OF 21 SHEETS  
 DATE: 02-10-04

STA 69+60 ENT. LT.  
IMP 15' X 30' C.M.P.  
REMOVE  
15' X 34' METAL PIPE CULV.

STA 71+66 ENT. LT.  
IMP 15' X 30' C.M.P.  
REMOVE  
15' X 34' METAL PIPE CULV.

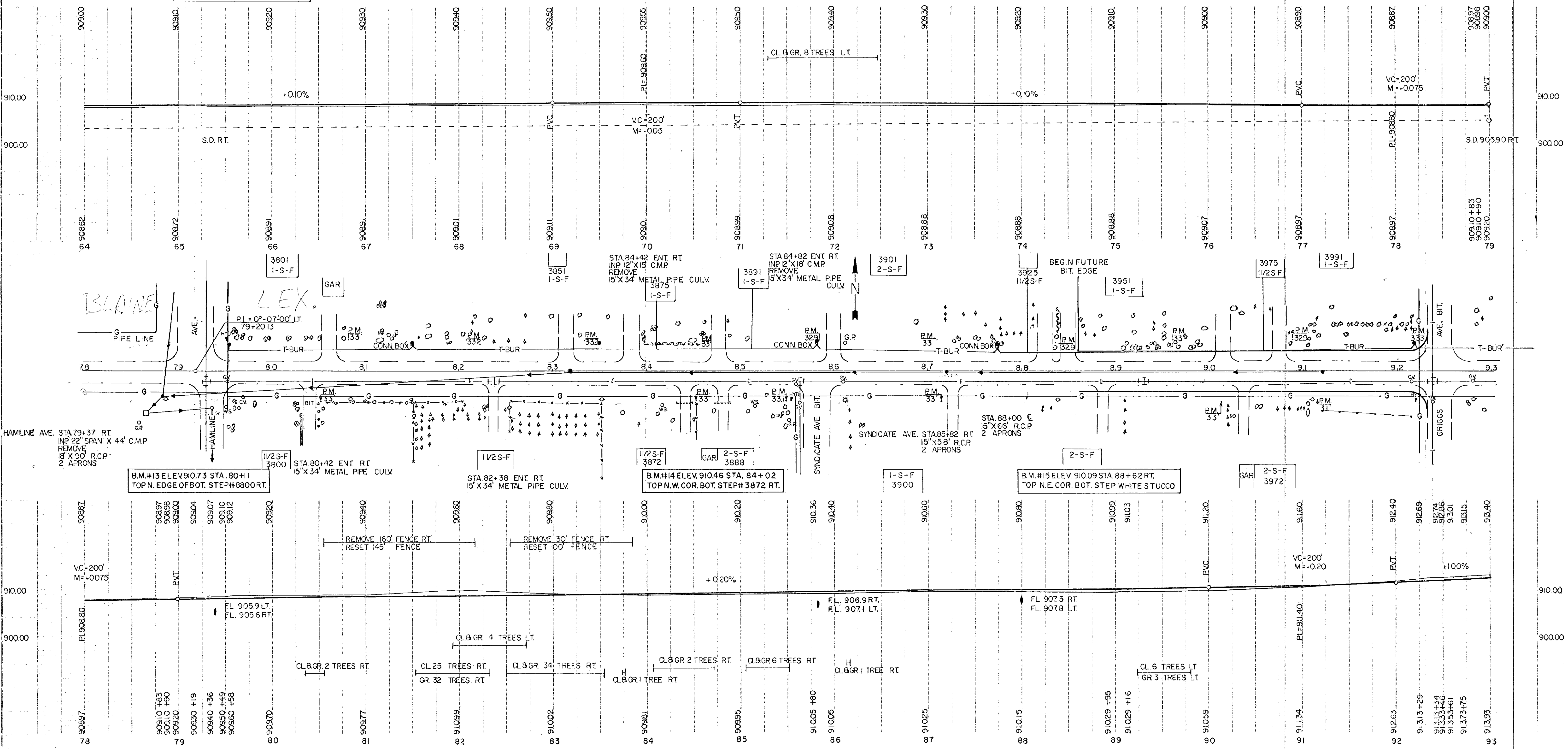


NORTHERN NATURAL GAS CO. 6" MAIN

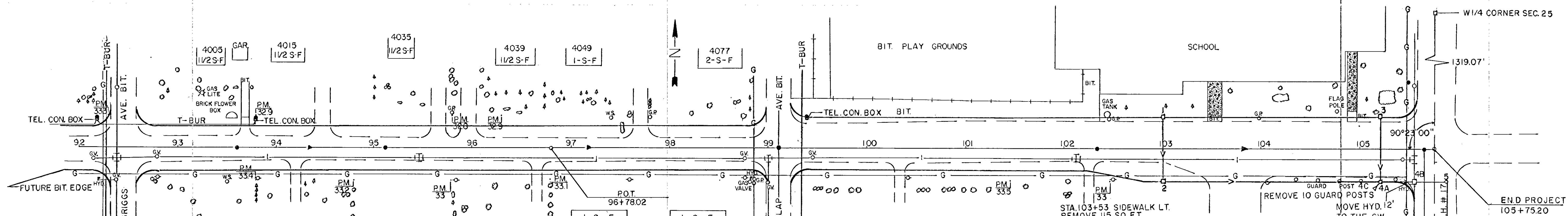
NORTH CENTRAL PUBLIC SERVICE 4" MAIN

B.M.#11 ELEV. 907.94 STA. 65+22  
SPIKE IN P.P. RIGHT 31'

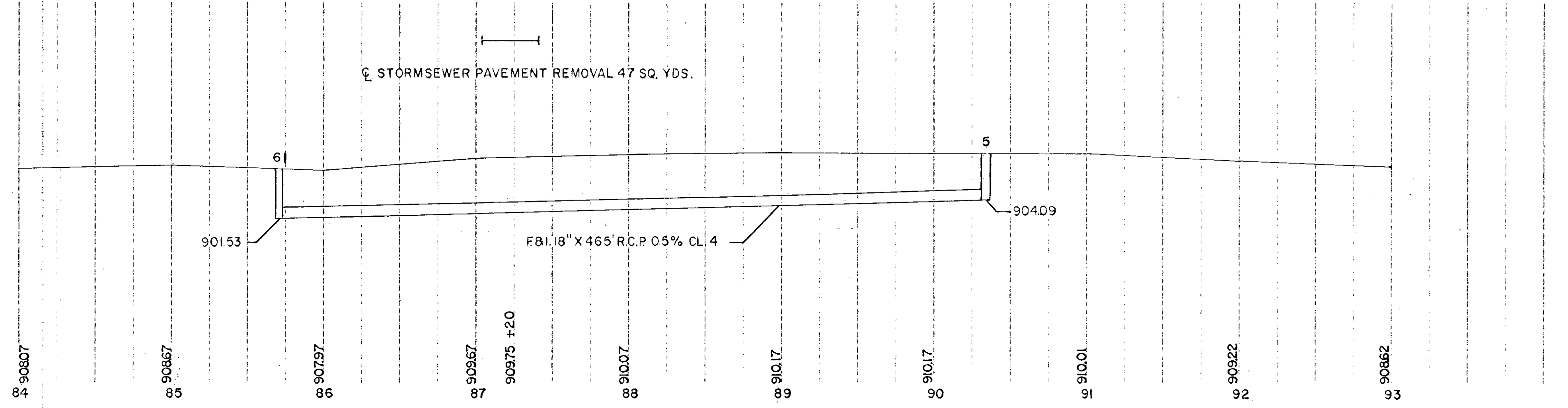
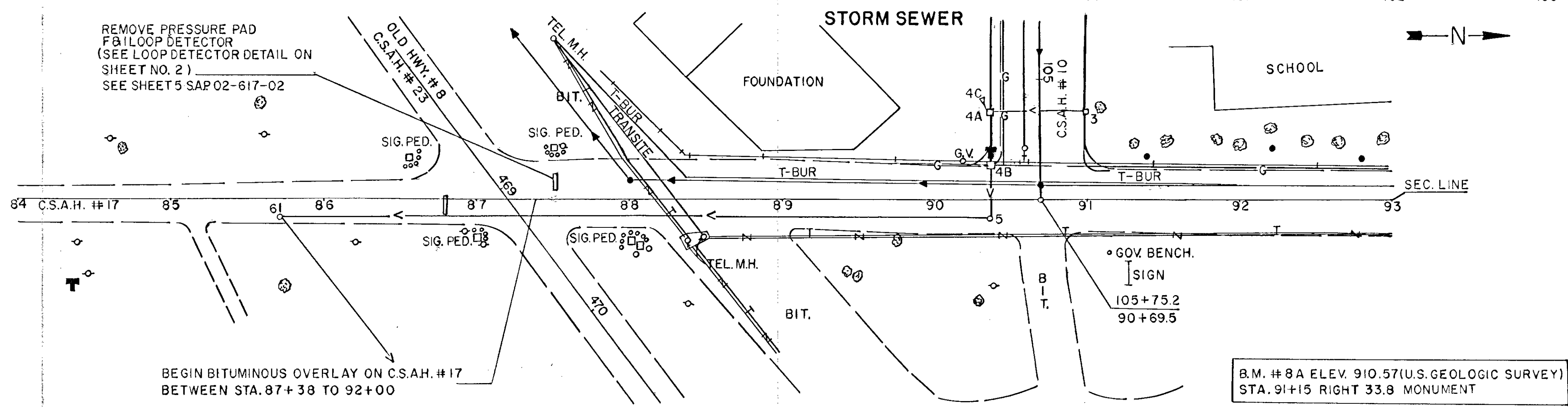
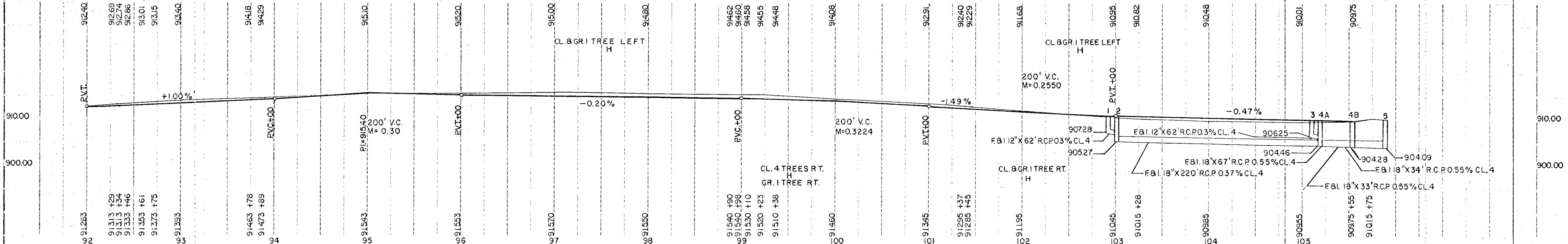
B.M.#12 ELEV. 912.74 STA. 72+31  
SPIKE IN 18" OAK LEFT 79 FT.





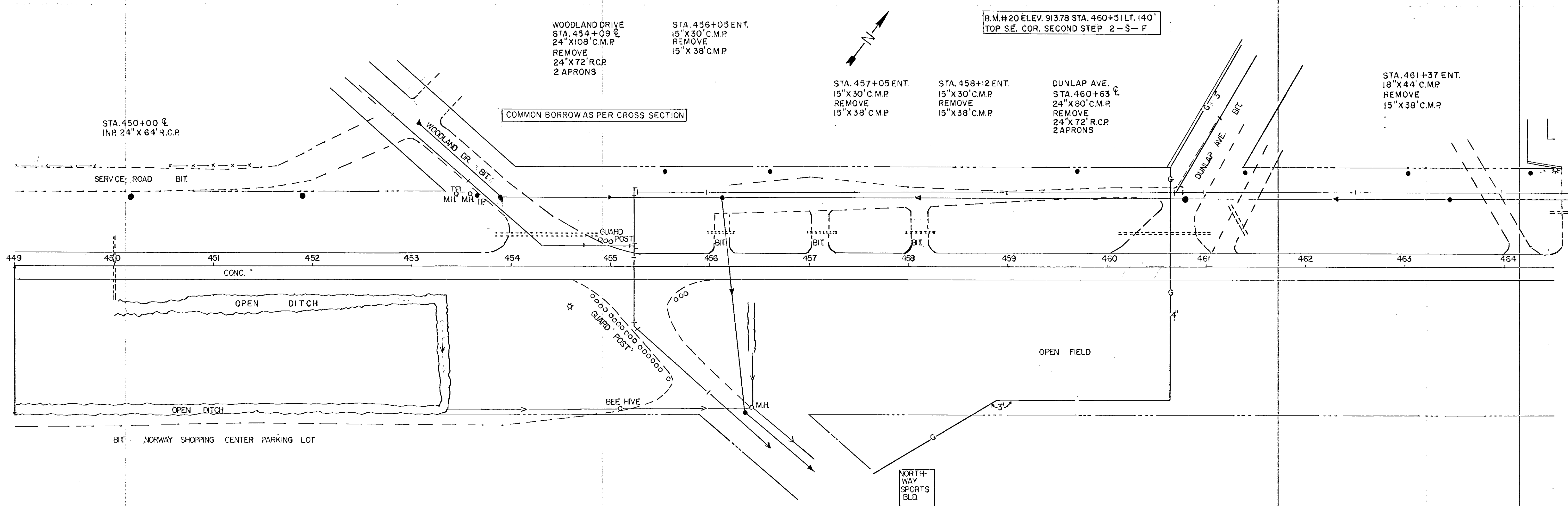


B.M. #16 ELEV. 915.90 STA. 93+34 TOP SE. COR. BOT. STEP #4005 LT.  
 B.M. #17 ELEV. 917.65 STA. 96+40 LT. 79' TOP SW. COR. BOT. FRONT STEP #4039  
 B.M. #18 ELEV. 914.82 STA. 101+81 TOP N.E. COR. BOT. STEP #4146 RT.



1. ALL WORK SHALL BE IN ACCORDANCE WITH THE STANDARD SPECIFICATIONS FOR CONSTRUCTION OF PUBLIC WORKS, LATEST EDITION, AS ADOPTED BY THE BOARD OF SUPERVISORS OF THE COUNTY OF ALABAMA.

2. THE CONTRACTOR SHALL BE RESPONSIBLE FOR OBTAINING ALL NECESSARY PERMITS AND APPROVALS FROM THE APPROPRIATE AGENCIES.



STA. 450+00  $\phi$   
INP. 24" X 64' R.C.P.

WOODLAND DRIVE  
 STA. 454+09  $\phi$   
 24" X 108' C.M.P.  
 REMOVE  
 24" X 72' R.C.P.  
 2 APRONS  
 STA. 456+05 ENT.  
 15" X 30' C.M.P.  
 REMOVE  
 15" X 38' C.M.P.

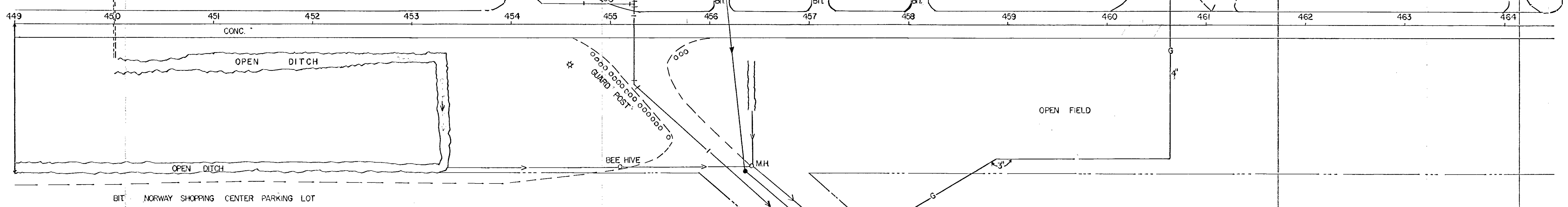
B.M.#20 ELEV. 913.78 STA. 460+51 LT. 140'  
 TOP SE. COR. SECOND STEP 2-S-F

STA. 457+05 ENT.  
 15" X 30' C.M.P.  
 REMOVE  
 15" X 38' C.M.P.

STA. 458+12 ENT.  
 15" X 30' C.M.P.  
 REMOVE  
 15" X 38' C.M.P.

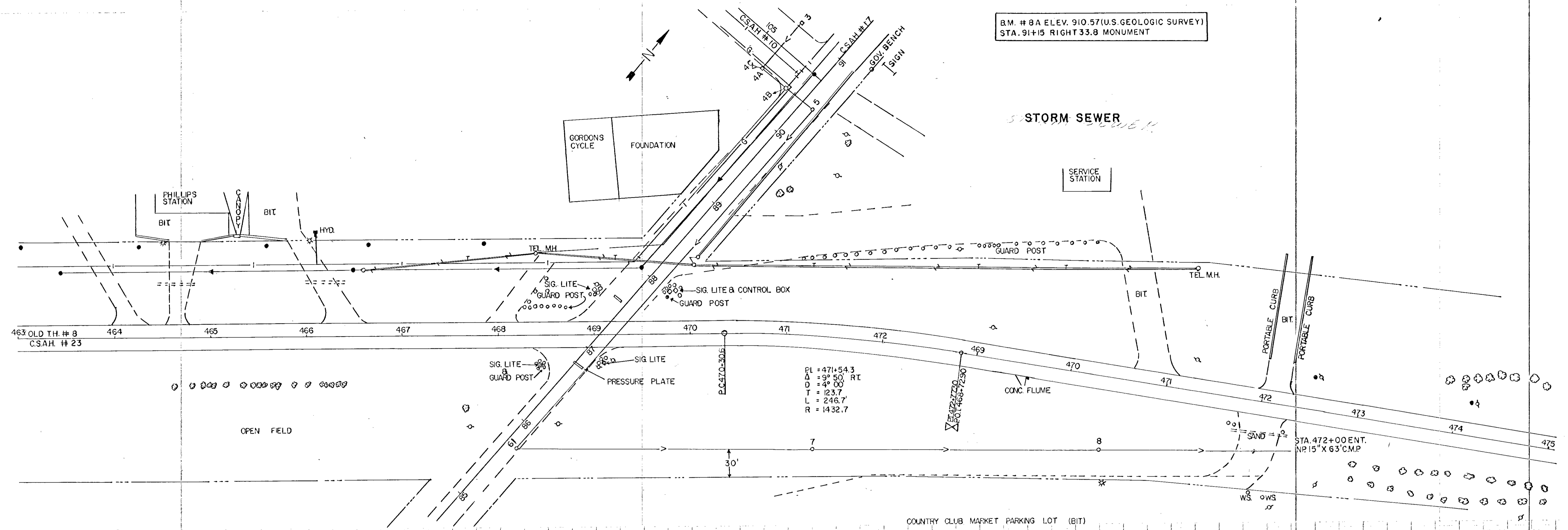
DUNLAP AVE.  
 STA. 460+63  $\phi$   
 24" X 80' C.M.P.  
 REMOVE  
 24" X 72' R.C.P.  
 2 APRONS

STA. 461+37 ENT.  
 18" X 44' C.M.P.  
 REMOVE  
 15" X 38' C.M.P.

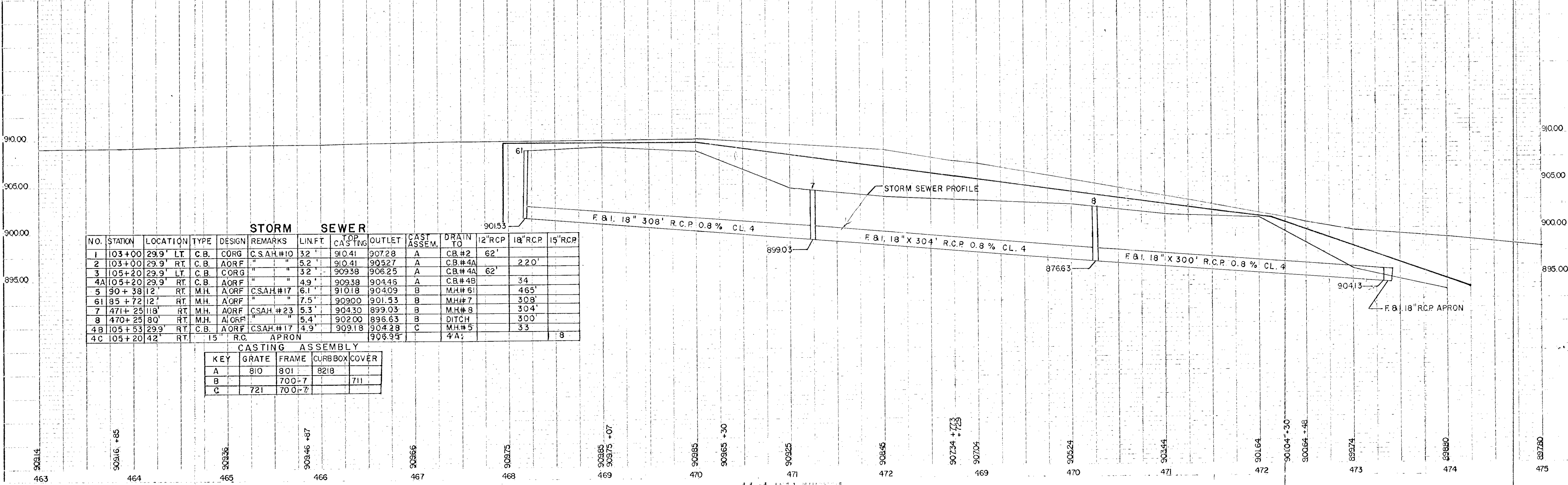


Station	Right of Way Elevation	Proposed Elevation	Notes
449	908.86		
450	908.76		
451	908.66		
452	908.66 +83	908.66	
453	908.76 +07	908.74 +25	
454	908.74 +91	908.74 +94	FL. 905.30 RT. FL. 905.00 LT.
455	908.74 +50	908.74 +73	
456	908.76	908.76 +39 908.76 +44 908.76 +52	
457	908.76		
458	908.66		
459	908.74		
460	908.84	908.84 +17	FL. 906.87 RT. FL. 905.57 LT.
461	908.84	908.84 +42 908.84 +52	
462	909.04		
463	909.14		
464	909.16 +85		

B.M. # 8A ELEV. 910.57 (U.S. GEOLOGIC SURVEY)  
 STA. 91+15 RIGHT 33.8 MONUMENT



PI = 471+54.3  
 Δ = 99° 55' RT.  
 T = 123.7  
 L = 246.7  
 R = 1432.7



STORM SEWER													
NO.	STATION	LOCATION	TYPE	DESIGN	REMARKS	LIN. FT.	TOP CASTING	OUTLET	CAST ASSEM.	DRAIN TO	12" RCP	18" RCP	15" RCP
1	103+00	29.9'	LT.	C.B.	CORG	32'	910.41	907.28	A	C.B.#2	62'		
2	103+00	29.9'	RT.	C.B.	AORF	5.2'	910.41	905.27	A	C.B.#4A		2.20'	
3	105+20	29.9'	LT.	C.B.	CORG	32'	909.38	906.25	A	C.B.#4A	62'		
4A	105+20	29.9'	RT.	C.B.	AORF	4.9'	909.38	904.46	A	C.B.#4B		34'	
5	90+38	12'	RT.	M.H.	AORF	6.1'	910.18	904.09	B	M.H.#61		465'	
61	85+72	12'	RT.	M.H.	AORF	7.5'	909.00	901.53	B	M.H.#7		308'	
7	471+25	118'	RT.	M.H.	AORF	5.3'	904.30	899.03	B	M.H.#8		304'	
8	470+25	80'	RT.	M.H.	AORF	5.4'	902.00	896.63	B	DITCH		300'	
4B	105+53	29.9'	RT.	C.B.	AORF	4.9'	909.18	904.28	C	M.H.#5		33'	
4C	105+20	42'	RT.	15"	R.C. APRON			906.93		4'A			8

CASTING ASSEMBLY			
KEY	GRATE	FRAME	CURB BOX COVER
A	810	801	8218
B		700-7	711
C	721	700-7	

DATE: 10/15/04  
 DRAWN BY: J. J. ...  
 CHECKED BY: ...  
 PROJECT: ...  
 SHEET NO. 9 OF 21 SHEETS