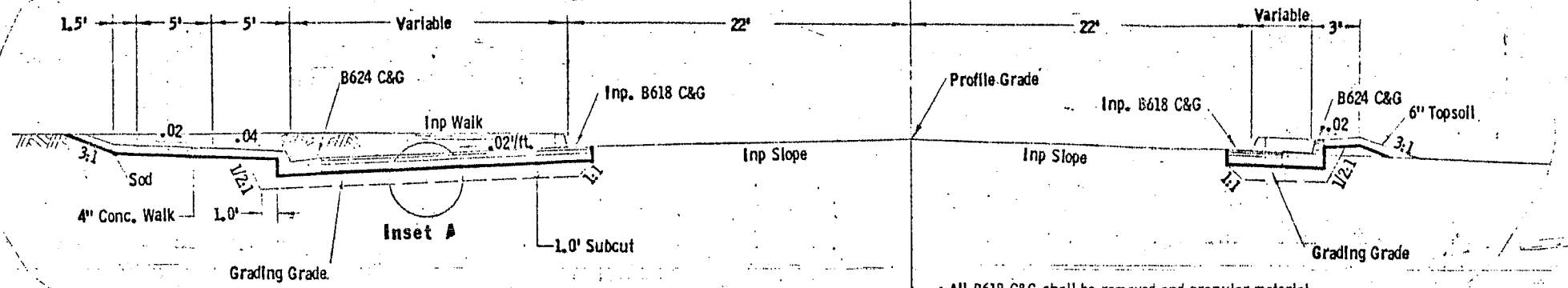
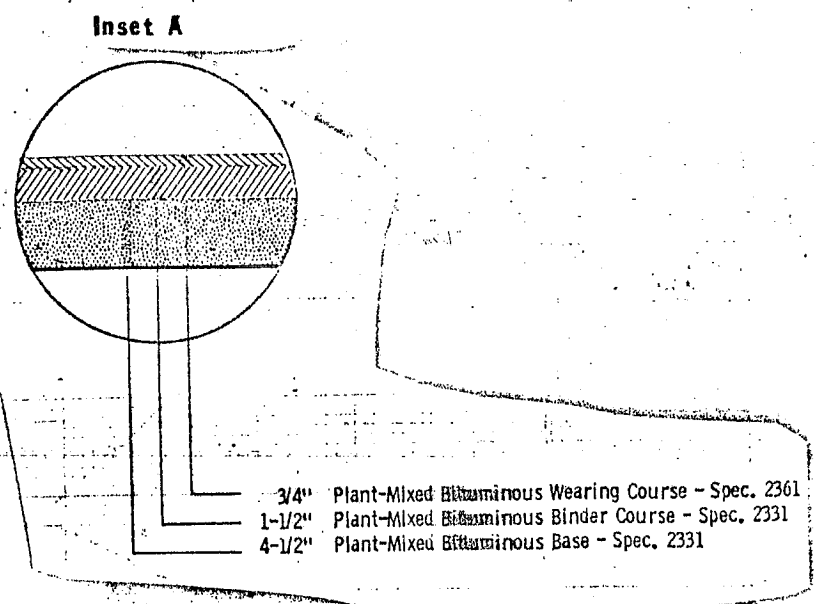


LSurvey P.O.T. Sta. 92+49.01 to LSurvey P.C. 97+09.01

Q Lsurvey (INP. HANSON BLVD.)



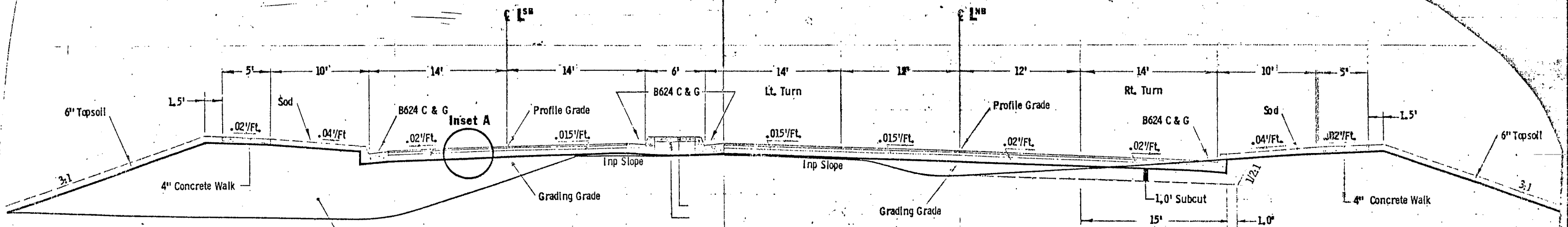
All B618 C&G shall be removed and granular material removed only to the extent necessary to accommodate the new surfacing. Construct granular embankment where required.



LSb P.C. 97+09.01 to LSb P.O.T. 100+12.52
LSb P.O.T. 0+54.25 to LSb P.O.T. 21+50.26

Lnb P.C. 97+09.01 to Lnb P.O.T. 99+91.86
Lnb P.O.T. 0+54.25 to Lnb P.O.T. 21+49.97

Q Lsurvey (INP HANSON BLVD)

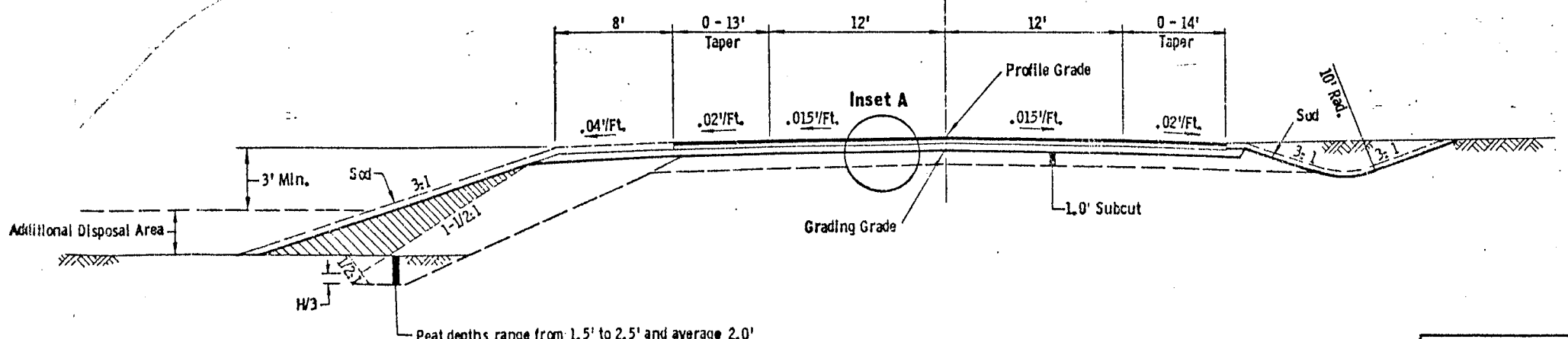


Upper 4.0' of embankment shall be Granular Material. The upper 1.0' of which shall be Selected Granular Material.

All Bituminous Surfacing shall be removed and granular material removed only to the extent necessary to accommodate the new surfacing. Construct granular embankment where required.

LSurvey P.O.T. 21+50 to LSurvey P.O.T. 26+55

Q Lsurvey (INP. HANSON BLVD.)

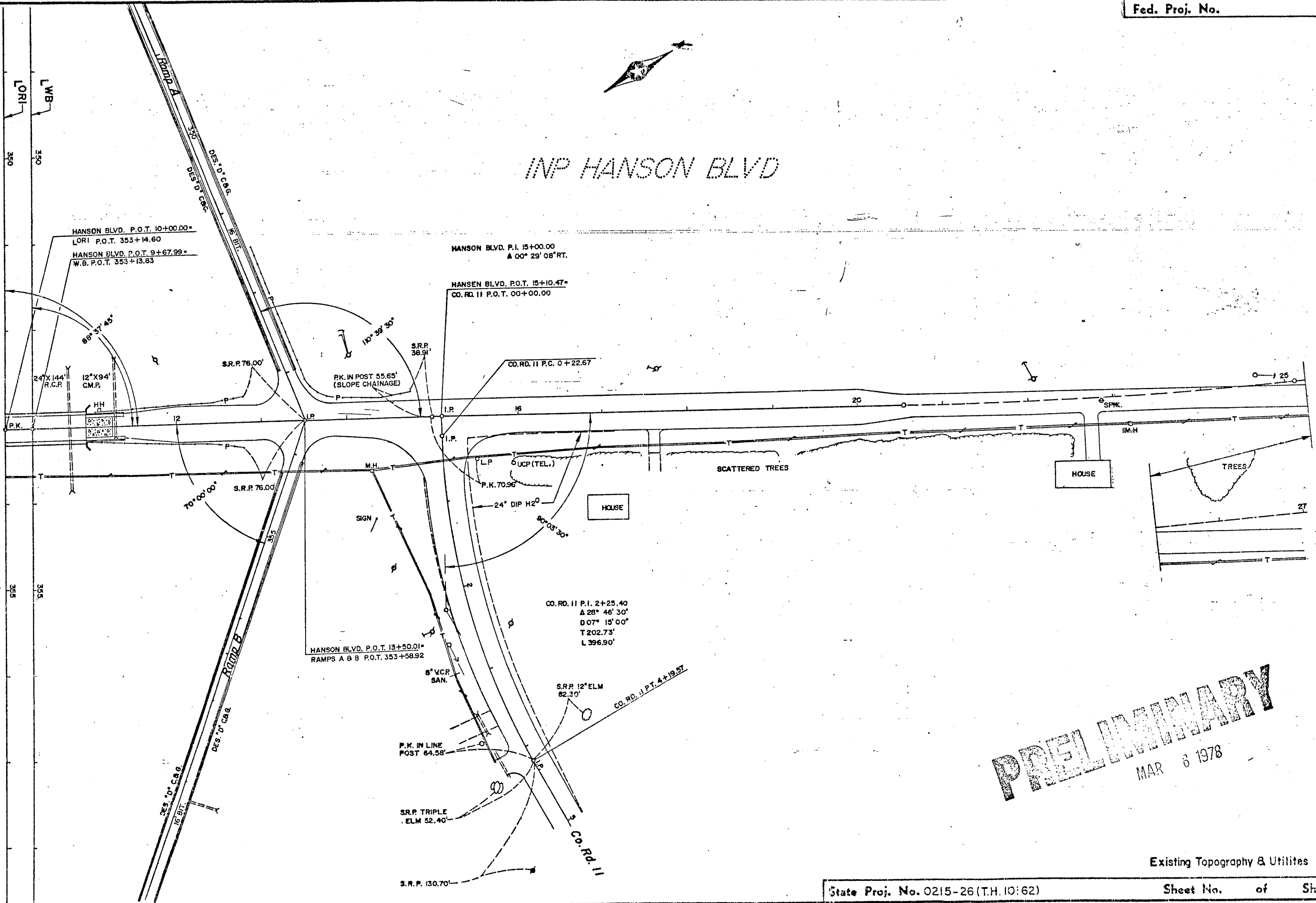


Peat depths range from 1.5' to 2.5' and average 2.0'

PRELIMINARY
MAR 6 1978

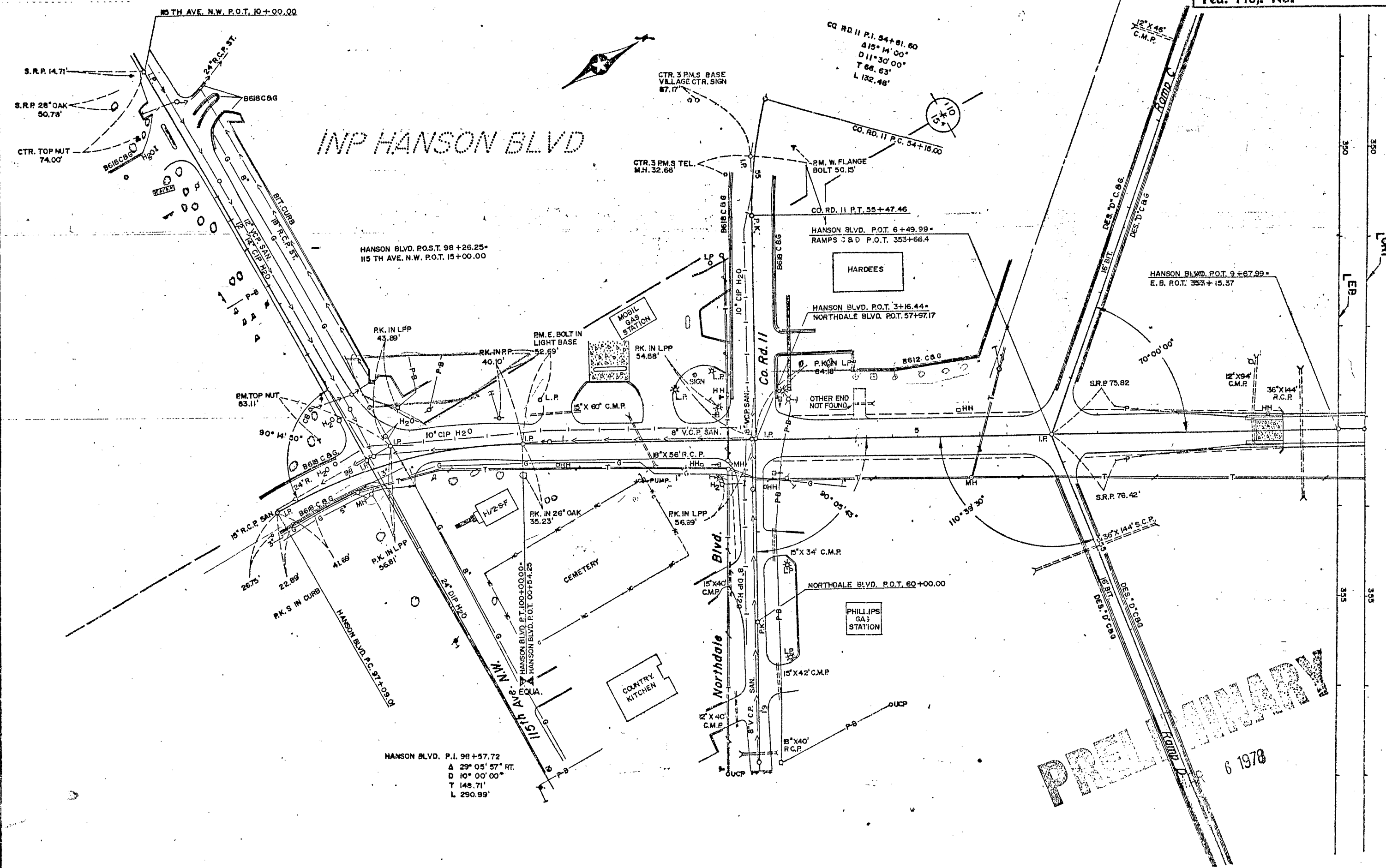
TYPICAL SECTIONS

INP HANSON BLVD



PRELIMINARY
MAR 6 1978

Existing Topography & Utilities



INP HANSON BLVD

PRELIMINARY
6 1978

HANSON BLVD. P.O.S.T. 98 +26.25 -
115 TH AVE. N.W. P.O.T. 15 +00.00

HANSON BLVD. P.O.T. 6 +49.99 -
RAMPS S & D P.O.T. 353 +66.4

HANSON BLVD. P.O.T. 9 +67.99 -
E. B. P.O.T. 353 +15.37

HANSON BLVD. P.I. 98 +57.72
A 29° 05' 57" RT.
D 10° 00' 00"
T 145.71'
L 290.99'

NORTHDALE BLVD. P.O.T. 60 +00.00

HANSON BLVD

L.S.B.
 P.I. 98+56.2390
 A 29° 05' 57" RT.
 D 10° 08' 01.17"
 T 47.2290'
 L 288.1012'
 R 567.2666'
 P.C. 97+09.0100
 P.T. 99+97.1112

SURVEY P.O.S.T. 98+26.25
 115 TH AVE NW P.O.T. 15+00

EQUATION

115 TH AVE NW
 SURVEY P.O.T. 100+00
 115 TH AVE NW P.O.T. 15+00
 115 TH AVE NW P.O.T. 15+00

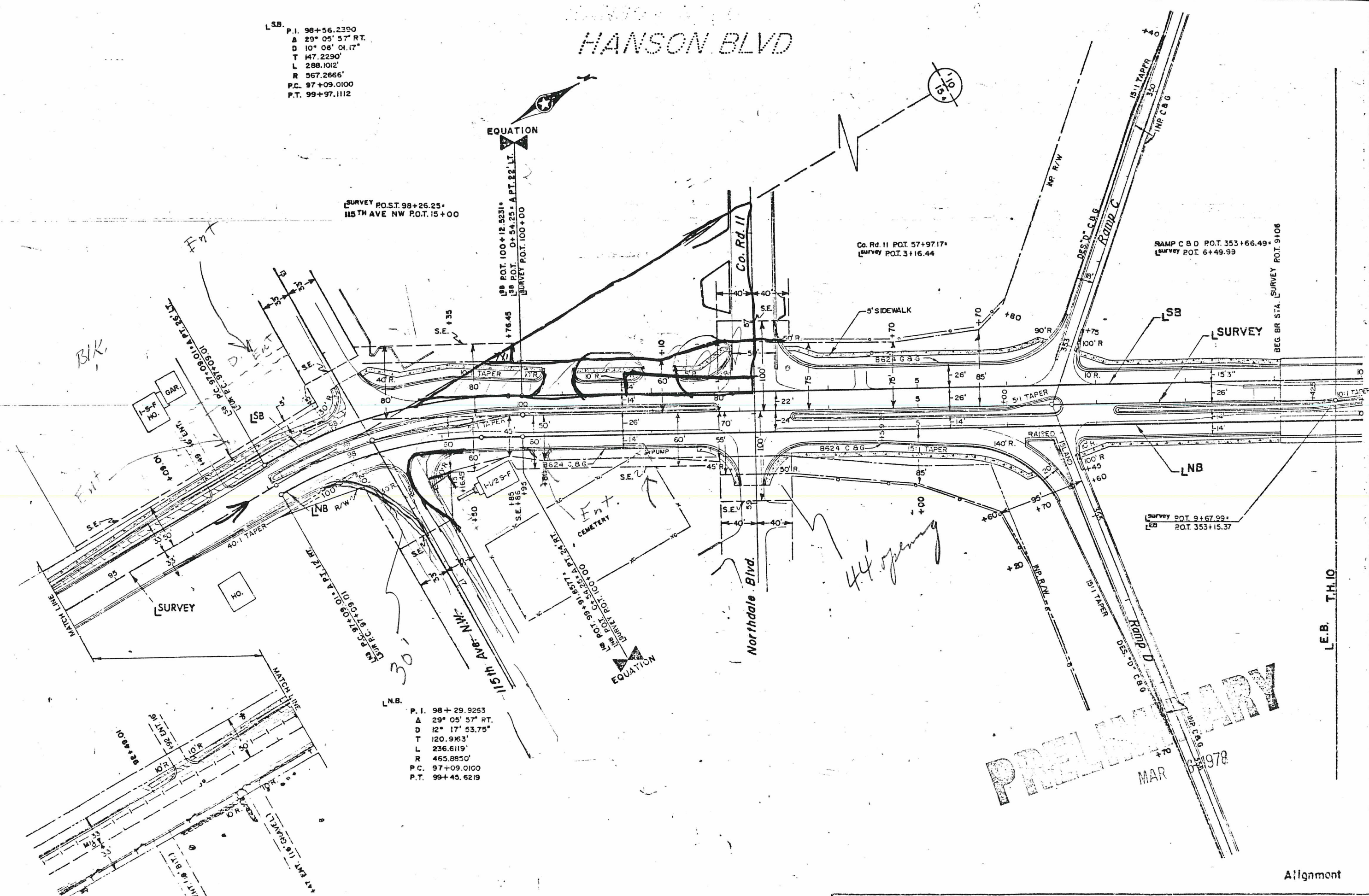
Co. Rd. 11 P.O.T. 57+97.17
 Survey P.O.T. 3+16.44

RAMP C B D P.O.T. 353+66.49
 Survey P.O.T. 6+49.99

Survey P.O.T. 9+67.99
 L.S.B. P.O.T. 353+15.37

BEG. BR. STA. SURVEY P.O.T. 9106

L.E.B. T.H.10



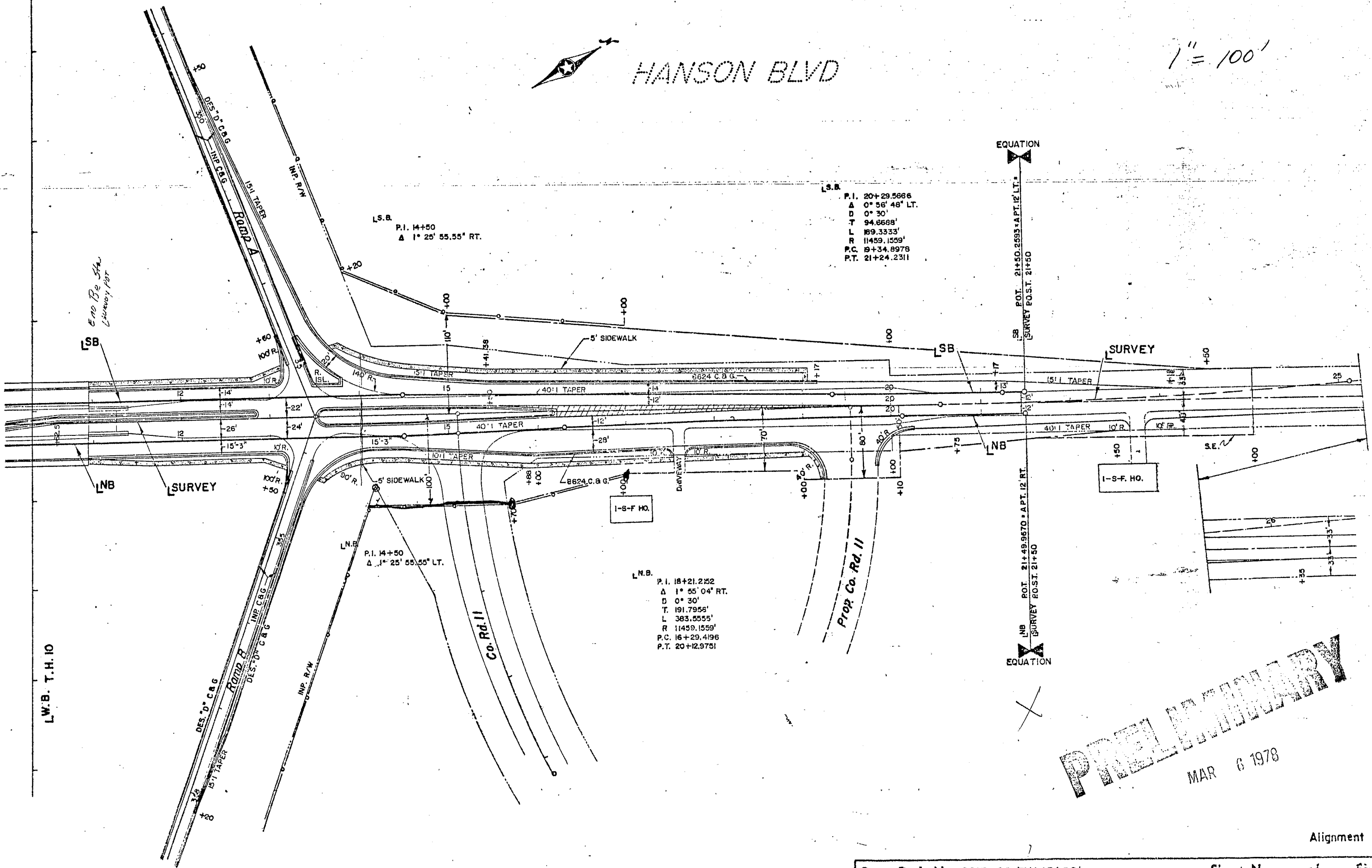
L.N.B.
 P.I. 98+29.9263
 A 29° 05' 57" RT.
 D 12° 17' 53.75"
 T 120.9163'
 L 236.6119'
 R 465.8850'
 P.C. 97+09.0100
 P.T. 99+45.6219

PRELIMINARY
 MAR 1978



HANSON BLVD

1" = 100'



L.S.B.
P.I. 14+50
Δ 1° 25' 55.55" RT.

L.S.B.
P.I. 20+29.5666
Δ 0° 58' 48" LT.
D 0° 30'
T 94.8668'
L 189.3333'
R 11459.1559'
P.C. 9+34.8978
P.T. 21+24.2311

L.N.B.
P.I. 14+50
Δ 1° 25' 55.55" LT.

L.N.B.
P.I. 18+21.2152
Δ 1° 55' 04" RT.
D 0° 30'
T 191.7955'
L 383.5555'
R 11459.1559'
P.C. 16+29.4196
P.T. 20+12.9751

EQUATION

SB

SURVEY

SB

LNB

SURVEY

NB

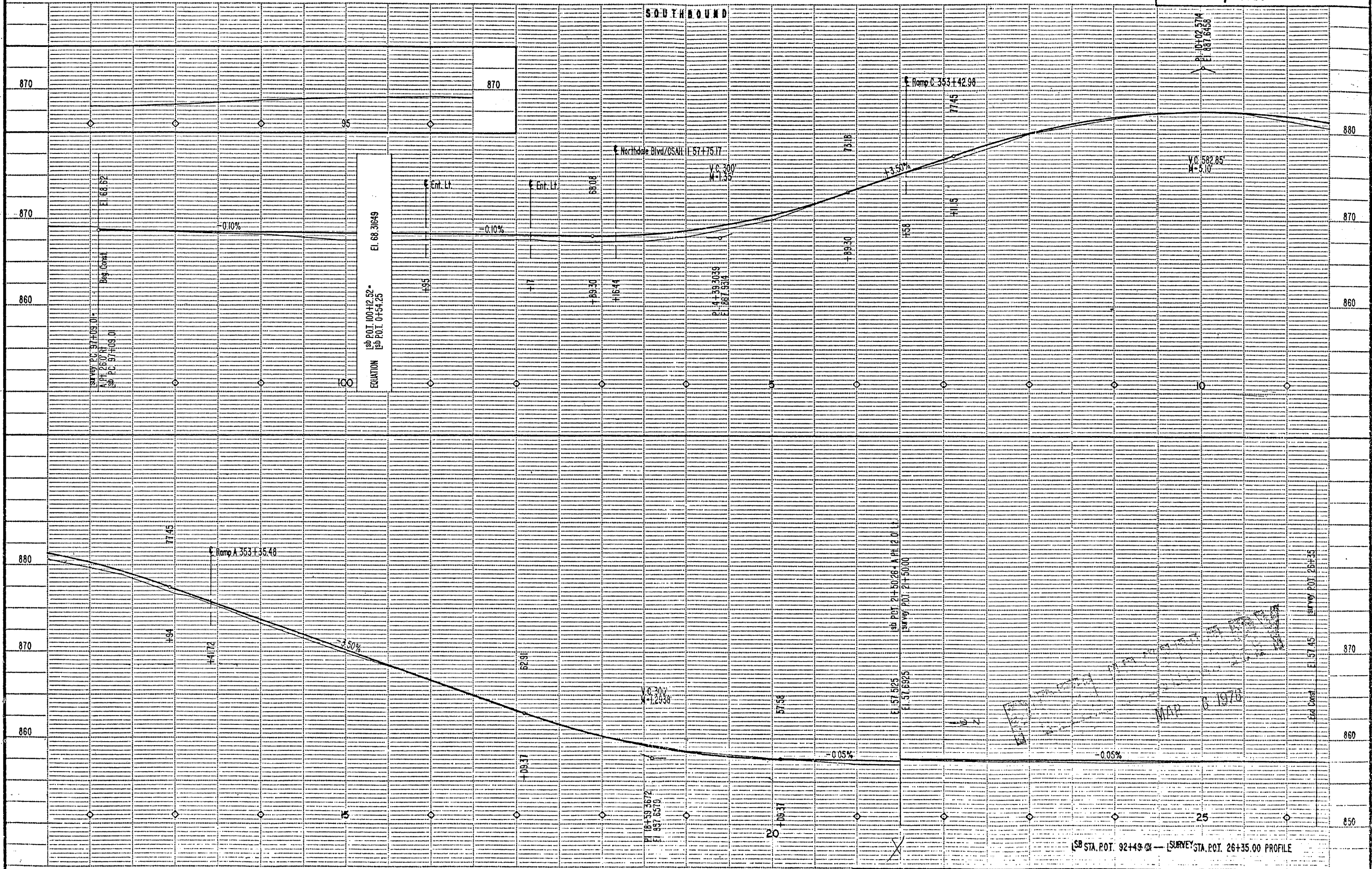
I-S-F HO.

EQUATION

PRELIMINARY
MAR 6 1978

L.W.B. T.H. 10

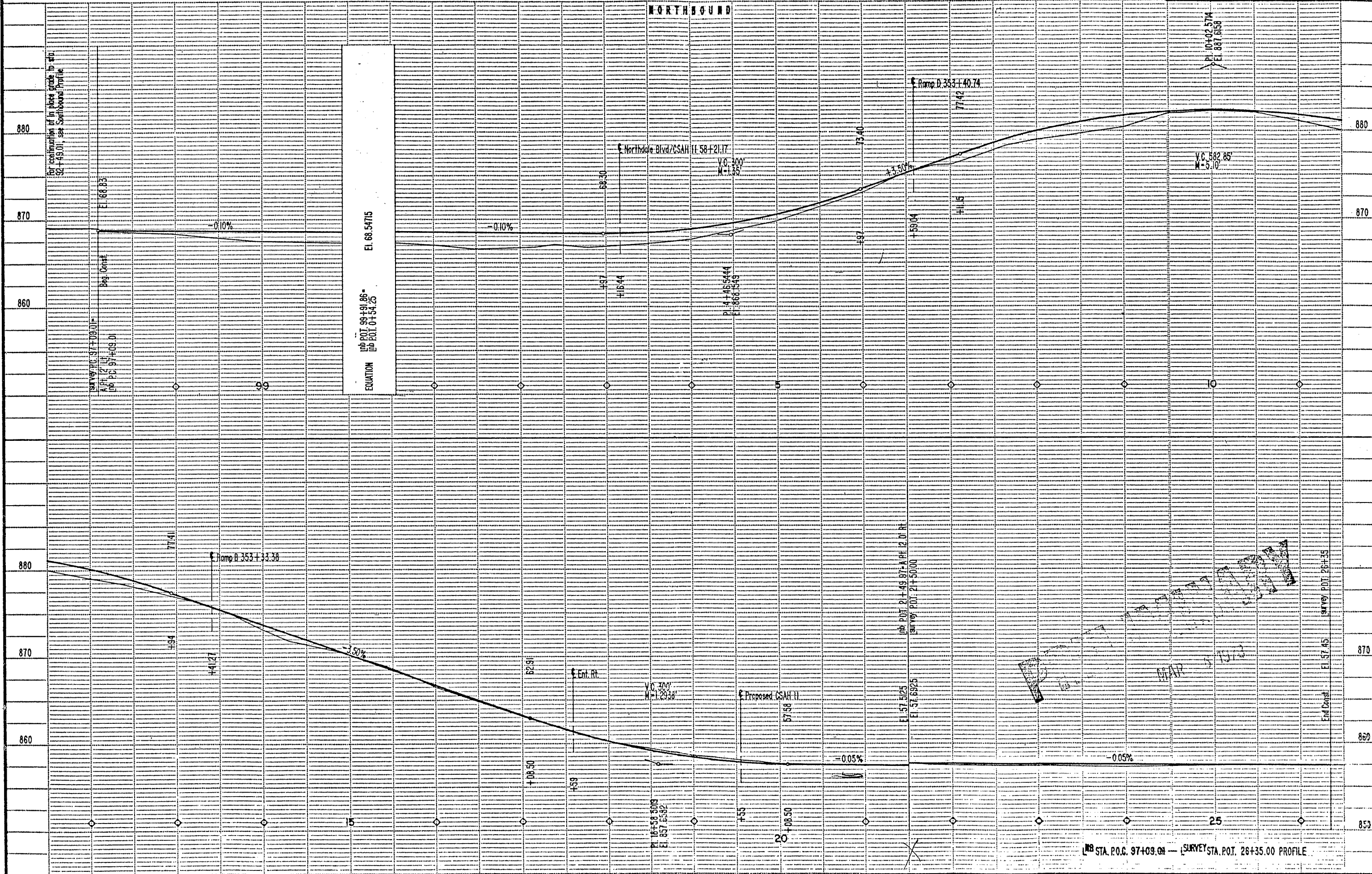
SOUTH BOUND



SB STA. POT. 92+49.00 SURVEY STA. POT. 26+35.00 PROFILE

TELETYPE POST FULL PROFILE - 108-624

NORTHBOUND



For continuation of in place grade to Sta. 92+49.01, see Southbound Profile

Survey P.C. 97+09.01
P.O.C. 97+09.01
Elev. 868.85
Beg. Const.

ELEVATION EQUATION
Sta. P.O.C. 97+09.01
Sta. P.O.C. 97+35.00

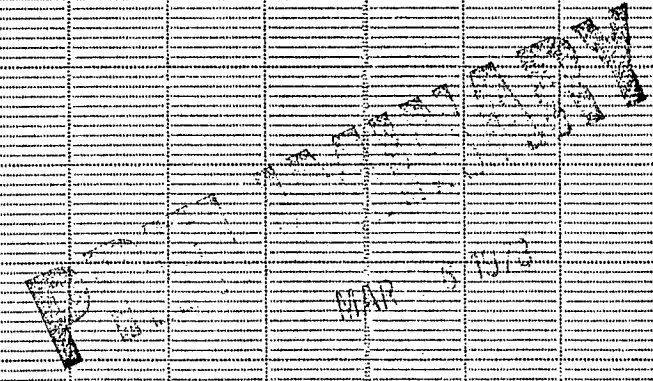
E. Northside Blvd/CSAH II 58+21.17
V.C. 300'
M=1.85

P. 4+46.5444
E. 868.543

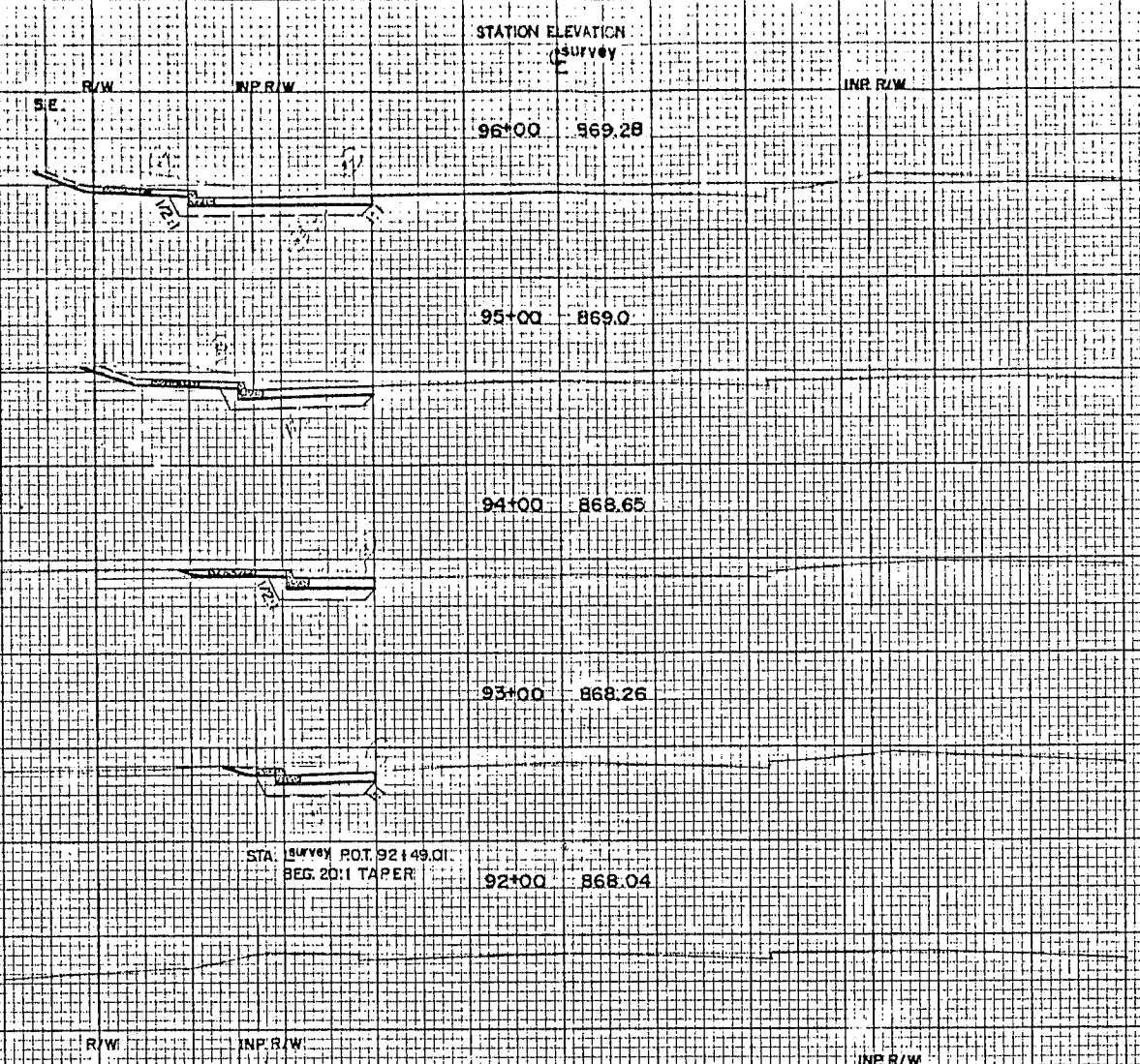
E. Ramp D. 353+40.74
77.42

V.C. 582.85'
M=5.10

P. 10+02.574
E. 867.658



Sta. P.O.C. 97+09.01 — Survey Sta. Pot. 26+35.00 Profile



STATION ELEVATION
(Survey)

EXCAVATION EMBANKMENT
SUB-TOTALS CU. YDS. CU. YDS. SUB-TOTALS

96+00 869.28

95+00 869.0

94+00 868.65

93+00 868.26

STA. Survey P.O.T. 92+49.01
BEG. 20:1 TAPER

92+00 868.04

R/W INP R/W INR R/W

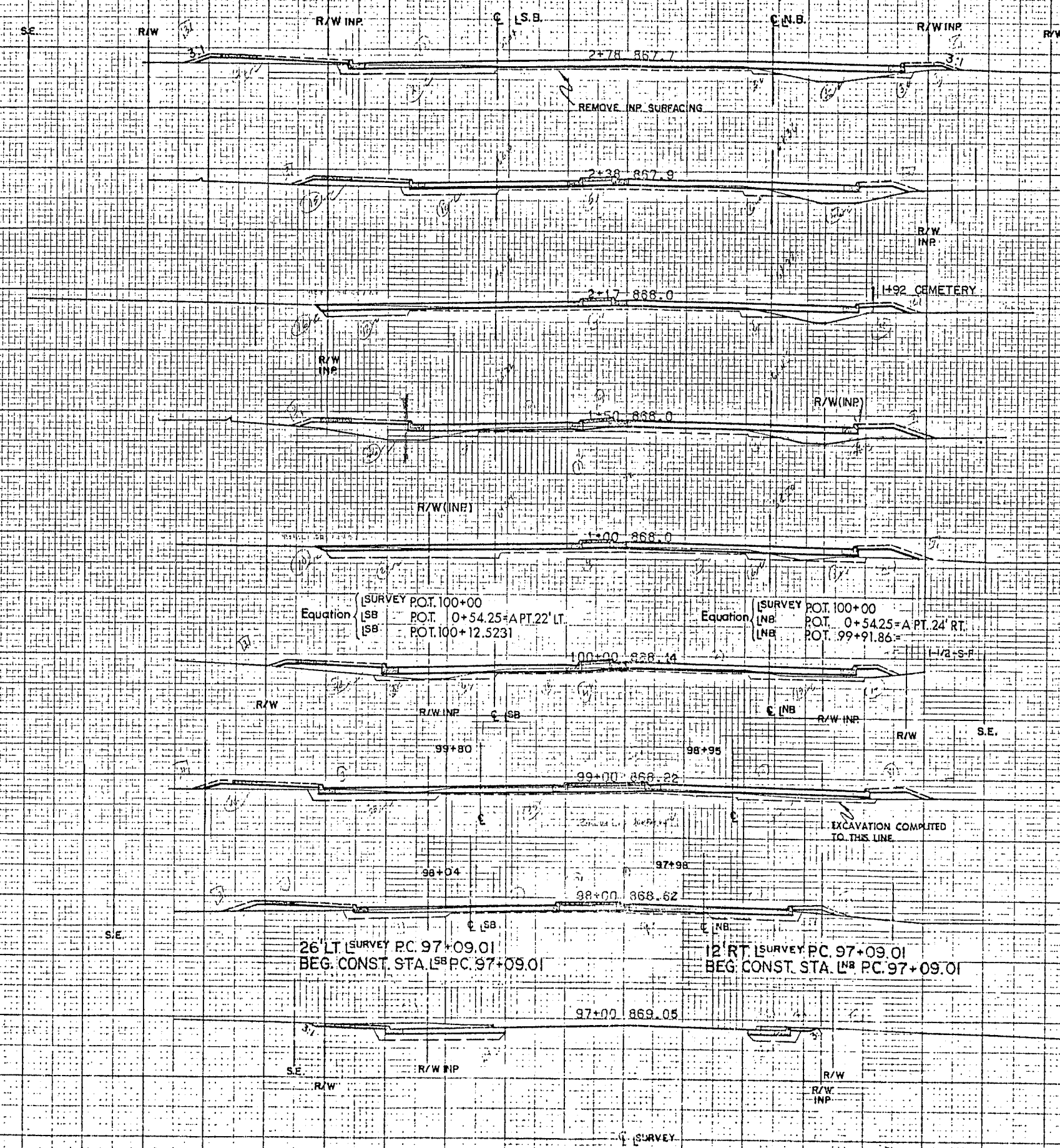
Survey

6 1978

Sta. Survey 92+00 - Sta. Survey 96+00

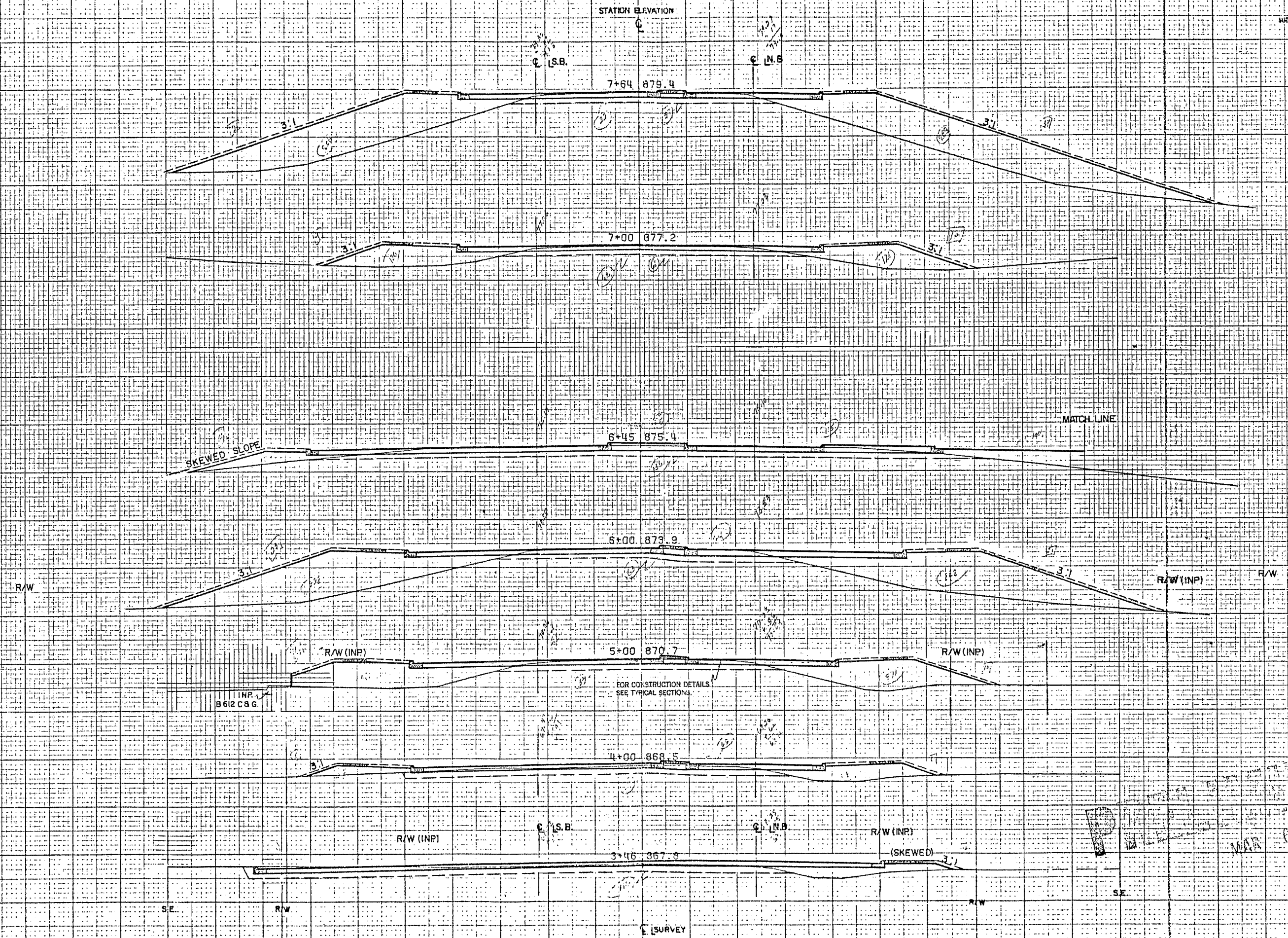
STATION ELEVATION

EXCAVATION		EMBANKMENT	
SUB-TOTALS	CU. YDS.	CU. YDS.	SUB-TOTALS



1970
MAR

Sta. L. Survey 97+00 - Sta. L. Survey 2+78



Sta. Survey 3+46 to Sta. L. Survey 7+64

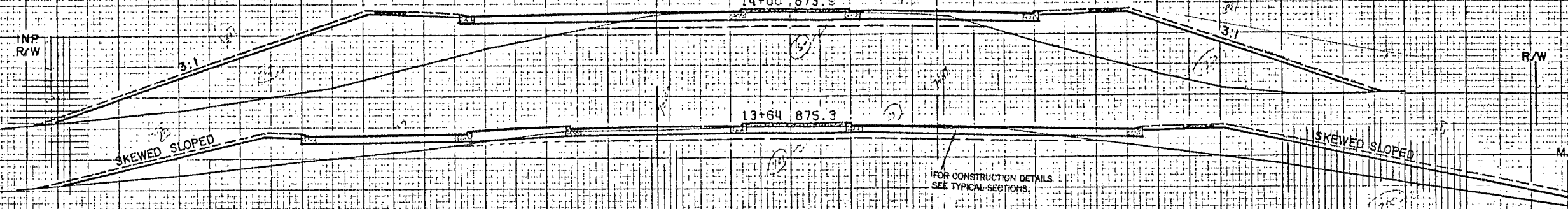
STATION ELEVATION

EXCAVATION		EMBANKMENT	
SUB-TOTALS	CU. YDS.	SUB-TOTALS	CU. YDS.

INP
R/W

R/W

R/W



14+00 873.9

13+64 875.3

FOR CONSTRUCTION DETAILS
SEE TYPICAL SECTIONS.

SKewed SLOPED

SKewed SLOPED

M.L. 65' LT. RAMP A. STA. 352+25'

13+00 877.4

12+40 879.3

12+00 880.3

11+00 882.1

BRIDGE 9723

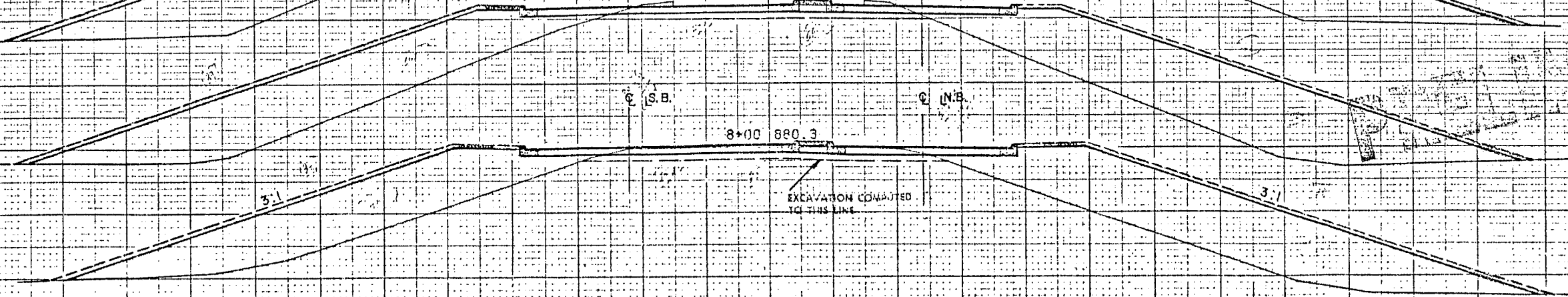
9+00 882.1

8+00 880.3

C.S.B.

C.N.E.

EXCAVATION COMPUTED
TO THIS LINE



MAR 6 1962

Sta 11+00 to Sta 14+00

STATION ELEVATION

EXCAVATION EMBANKMENT
S.F. TOTALS CU. YDS. S.F. TOTALS

S.B. 20+00 857.9

N.B. 19+00 858.9

18+00 860.7

17+00 863.5

16+00 867.0

15+69 868.1

15+40 869.1

14+89 870.8

14+30 872.8

S.B.

N.B.

Survey

EXCAVATION COMPUTED TO THIS LINE

FOR CONSTRUCTION DETAILS SEE TYPICAL SECTIONS

S-F HO.

MAR 1962

Sta. SURVEY 14+30 to Sta. SURVEY 20+00

STATION ELEVATION

EXCAVATION EMBANKMENT

☉ SURVEY

28+00 856.8

27+00 857.3

12' RT. ☉ HANSON BLVD. STA. 26+35
END 40:1 TAPER

INP R/W

☉ INP HANSON BLVD.

INP R/W

26+00 856.7

FOR CONSTRUCTION DETAILS
SEE TYPICAL SECTIONS.

25+00 856.4

INP R/W

24+00 856.9

EXCAVATION COMPUTED
TO THIS LINE

12' LT. ☉ HANSON BLVD. 23+12
END 15:1 TAPER

23+00 857.2

R/W PROP

PROP R/W

22+00 857.5

☉ INP HANSON BLVD.

SE

EQUATION INP HANSON BLVD. P.O.T. 21+50
S.B. P.O.T. 21+50.26 = A PT. 12' LT.

EQUATION INP HANSON BLVD. P.O.T. 21+50
N.B. P.O.T. 21+49.97 = A PT. 12' RT.

INP R/W

21+00 857.7

INP R/W

PROP R/W

☉ SB

☉ NB

☉ SURVEY

PROP R/W

MAR 6 1974

Sta. survey 21+00 to Sta. survey 28+00