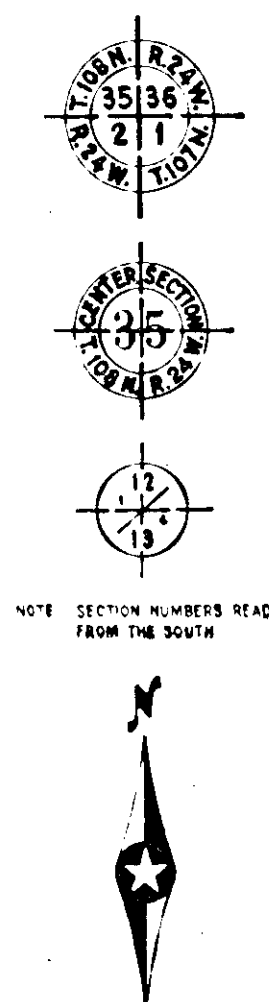


CONVENTIONAL SIGNS

STATE LINE	---	1. WASH.	
COUNTY LINE	---	BRUSH	
TOWNSHIP OR RANGE LINE	---	ORCHARD	
SECTION LINE	---	ROCK EDGE	
QUARTER LINE	---	SAND	
SIXTEENTH LINE	---	EDGE OF CUT	
PRESENT ROAD 7/8 LINE	---	TOE OF EMBANKMENT	
LIMITED ACCESS	---	CATCH BASIN	
PROPERTY LINE (EAST-WEST)	---	MANHOLE	
VACATED PLANTED PROPERTY	---	TRIP POLE	
CORPORATE OR CITY LIMITS	---	FIRE HYDRANT	
TRUCK HIGHWAY CENTER LINE	---	SEC. LAMP	
RETAINING WALL	---	OTHER LAMPS (SHOW 4 IN)	
STEAM RAILROAD	---	RA. PLAC. CROSSING SIGN	
ELECTRIC RAILROAD	---	RAILROAD CROSSING BEAR.	
RAILROAD RIGHT OF WAY LINE	---	ELECTRIC WARNING SIGN	
CREEK	---	CROSSING GATE	
RAPIDS OR WATERFALL	---	TATTLE SLARE	
DRY RUN	---	OVERHEAD HIGHWAY SIGN	
GRASSY DITCH	---	INTERPASS (SHOW LIGHT)	
HIGH TENSION LINE	---	ASBMENT, WALL & PIER	
POWER POLE LINE	---	BRIDGE	
TELEPHONE OR TELEGRAPH LINE	---	CONCRETE	
SHARD BAIL	---	BUILDING ONE STORY FRAME	
WIRE FENCE	---	CONCRETE & STONE TYLE & BRICK SET STUCCO	
RAILROAD SHOW FENCE	---	HEDGE	
STONE WALL OR FENCE	---	IRON PIPE	
SOFT MOUND	---	STONE MONUMENT	
WATER PIPE	---	WOOD STAKE OR B	
SEWER PIPE	---	MEANER CORNER	
SEWER TIE	---		
SEWER PIT	---		
SAND PIT	---		
CLAY PIT	---		
ROCK BLAST	---		
SPRINGS	---		
WASH.	---		



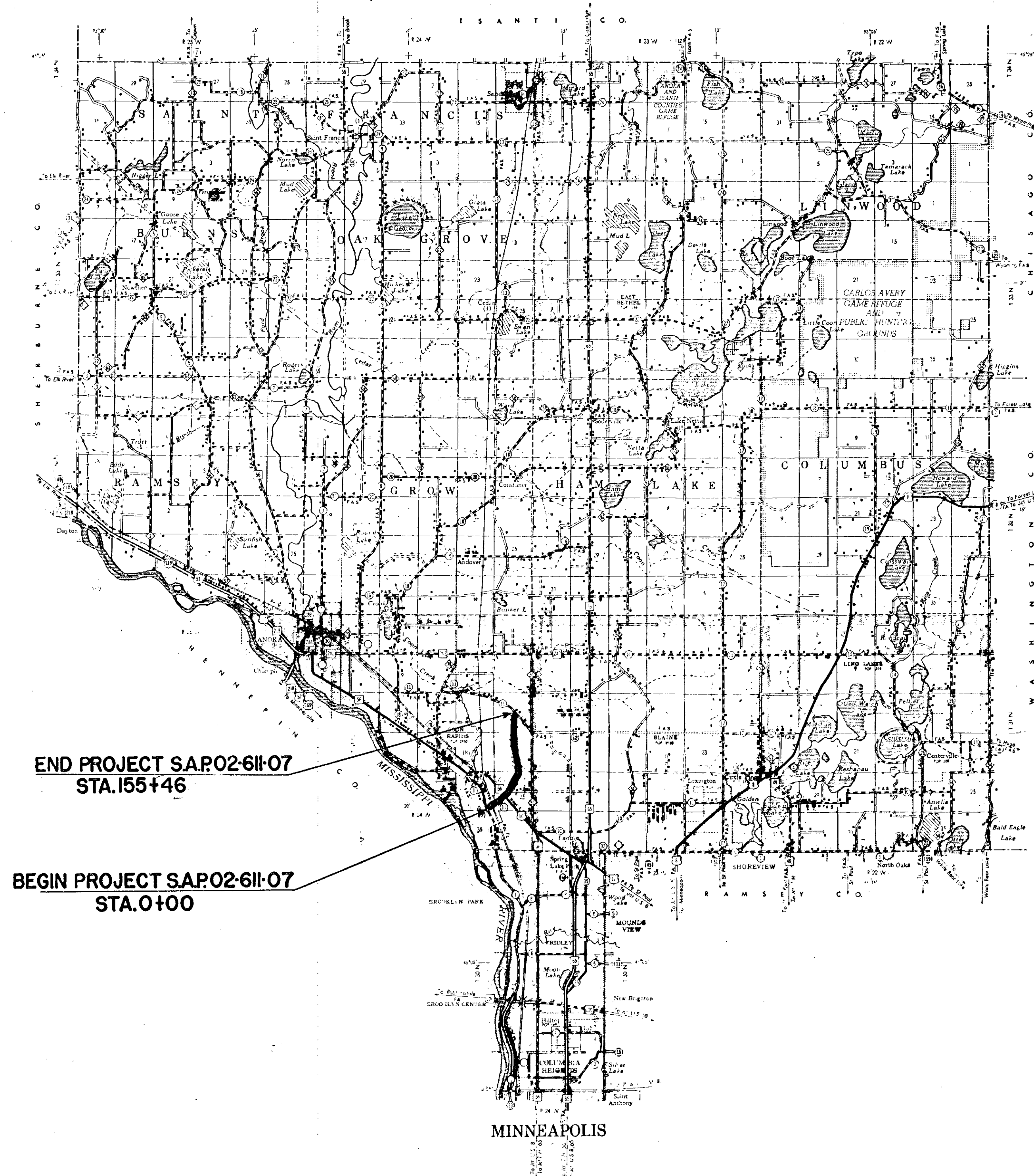
STATE OF MINNESOTA
DEPARTMENT OF HIGHWAYS

CONSTRUCTION PLAN FOR
County State Aid Highway No. 11

BETWEEN CSAH# I (EAST RIVER ROAD) AND CSAH# II (NORTHOALE BLVD)
From CSAH# I in the SW 1/4 sec. 26, T31R24 To a point 431.80 north of the center of section 13, T31N, R24W

GROSS LENGTH	15,500.46 FEET	2.94 MILES
BRIDGES LENGTH	0 FEET	0 MILES
EXCEPTIONS LENGTH	0 FEET	0 MILES
NET LENGTH	15,500.46 FEET	2.94 MILES

Plan 1 inch = 200 Feet
PROFILE: Horiz. 1 inch = 200 Feet Vert. 1 inch = 20 Feet
WORKING PLANS: Horiz. 1 inch = 100 Feet Vert. 1 inch = 10 Feet
Cross Section 1 inch = 10 FEET
LAYOUT: Scale 1 inch = Feet



INDEX OF SHEETS

Sheet No. 1	Title Sheet & Layout Map
No. 2	Est. Quantities & Typical Sec.
No. 3 To 5	Plan & Profile
No. 6 To 19	Cross Sections

DESIGN SPEED
50 M.P.H.
LOCALLY RESTRICTED

ALL APPLICABLE FEDERAL, STATE AND LOCAL LAWS AND ORDINANCES WILL BE COMPLIED WITH, IN THE CONSTRUCTION OF THIS PROJECT.

I HEREBY CERTIFY THAT THIS PLAN WAS PREPARED BY ME OR UNDER MY DIRECT SUPERVISION AND THAT I AM A DULY REGISTERED PROFESSIONAL ENGINEER UNDER THE LAWS OF THE STATE OF MINNESOTA.

Edgar J. Lundheim DATE 4-5-62
ANOKA COUNTY REG. NO. 2551

RECOMMENDED FOR APPROVAL *Edgar S. Pearson* 4-9-1962
DISTRICT ENGINEER

RECOMMENDED FOR APPROVAL *John McMillan* 4/24/1962

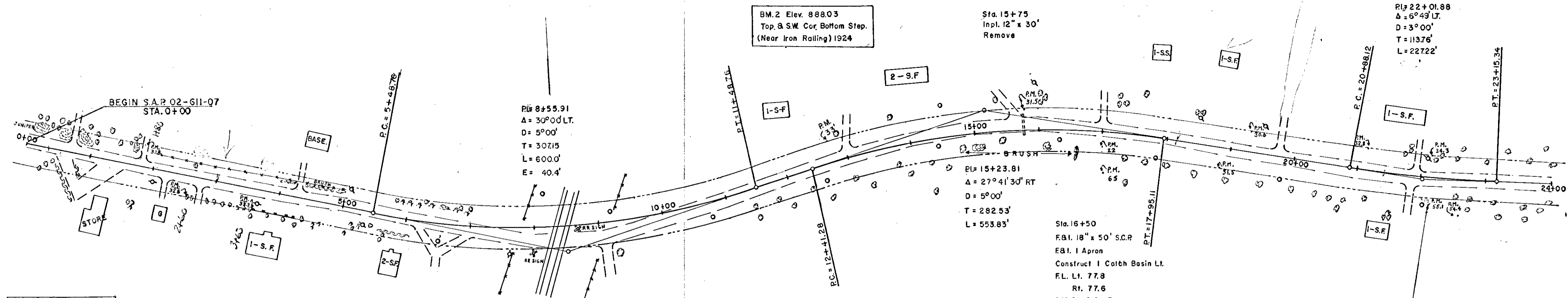
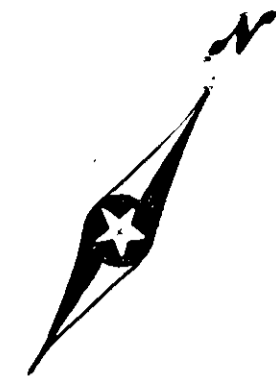
APPROVED 4-25-1962 *W. E. ...*
STATE AID ENGINEER

MICRO-FILMED

MICRO-FILMED

S.A.P. 02-611-07

— SPECIFICATIONS —
THE "SPECIFICATIONS FOR HIGHWAY CONSTRUCTION" DATED MAY 1, 1959, AND SUBMITTED FOR APPROVAL BY THE DIVISION ENGINEER OF THE BUREAU OF PUBLIC ROADS ON MARCH 26, 1959, SHALL GOVERN.



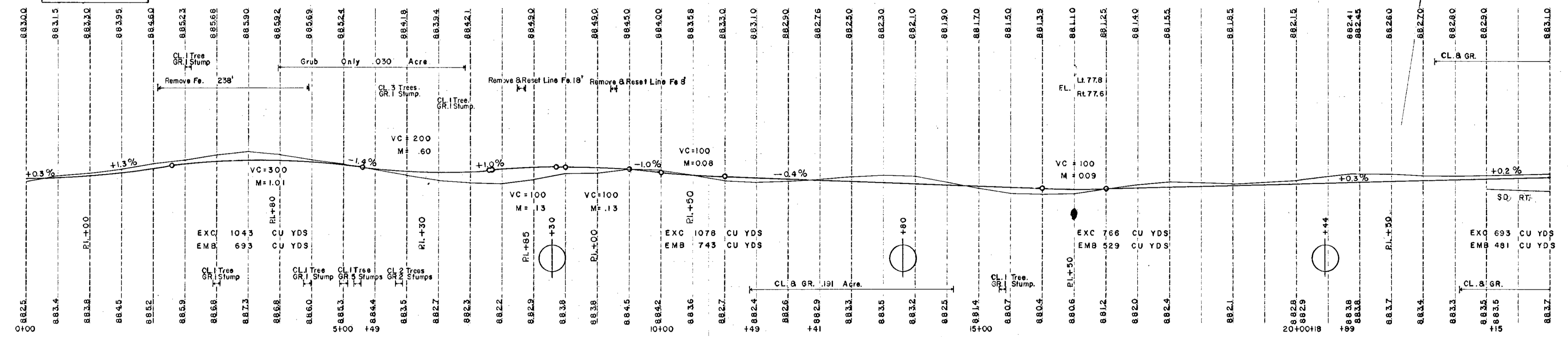
BM. 1 Adj. To Conform To Min. Highway Dept. Neaz. IO Survey

BM. 1 Elev. 883.19
Top S.W. Cor. Tule Booth
Slab RT. East River Road.

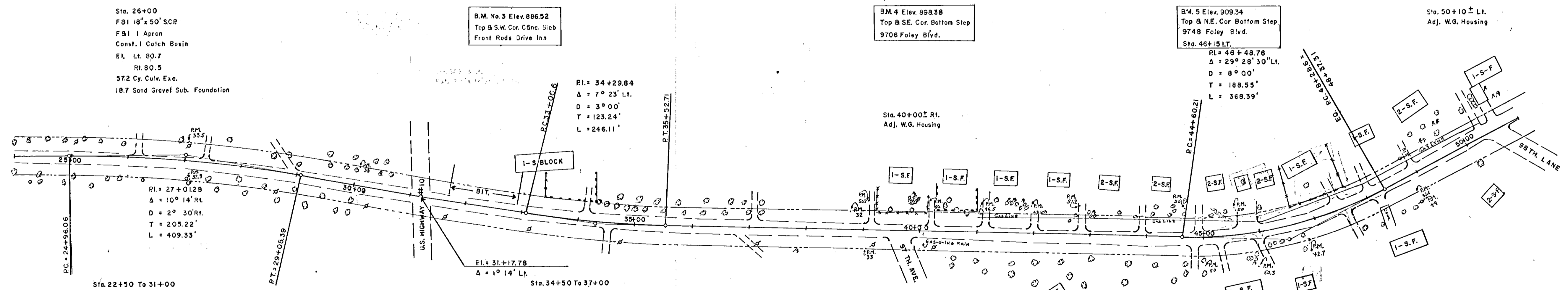
Sta. 6+50 To 20+00
Lt. & Rt. Mulch 0.45 Acres

Sta. 16+50
FBI 18" x 50' S.C.P.
FBI 1 Apron
Construct 1 Catch Basin Lt.
FL Lt. 77.9
Rt. 77.6
600 Cy. Culv. Exc.
262 Cy. Sand Gravel Sub. Foundation

900
890
880
870



900
890
880
870



Sta. 26+00
FBI 18" x 50' S.C.P.
FBI 1 Apron
Const. 1 Catch Basin
FL Lt. 80.7
Rt. 80.5
572 Cy. Culv. Exc.
187 Sand Gravel Sub. Foundation

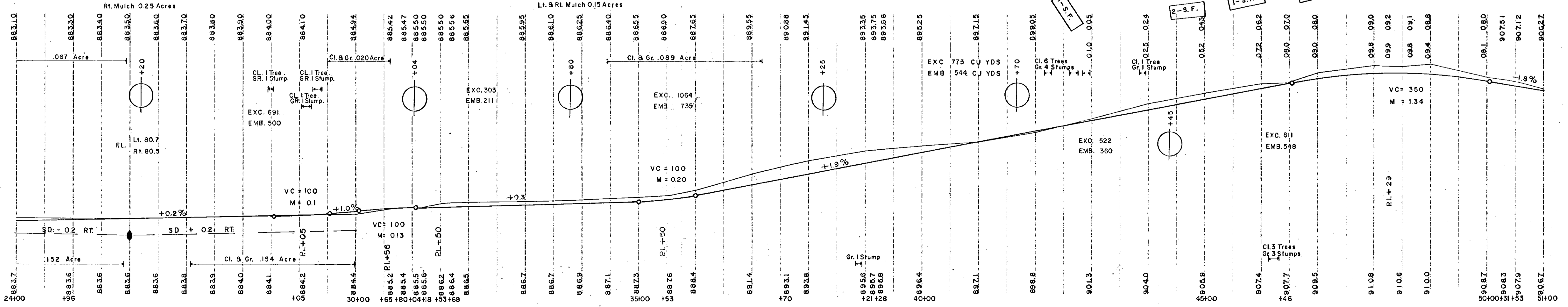
BM. No. 3 Elev. 886.52
Top S.W. Cor. C6nc. Slab
Front Rds Drive Inn

BM. 4 Elev. 898.38
Top S.E. Cor. Bottom Step
9706 Foley Blvd.

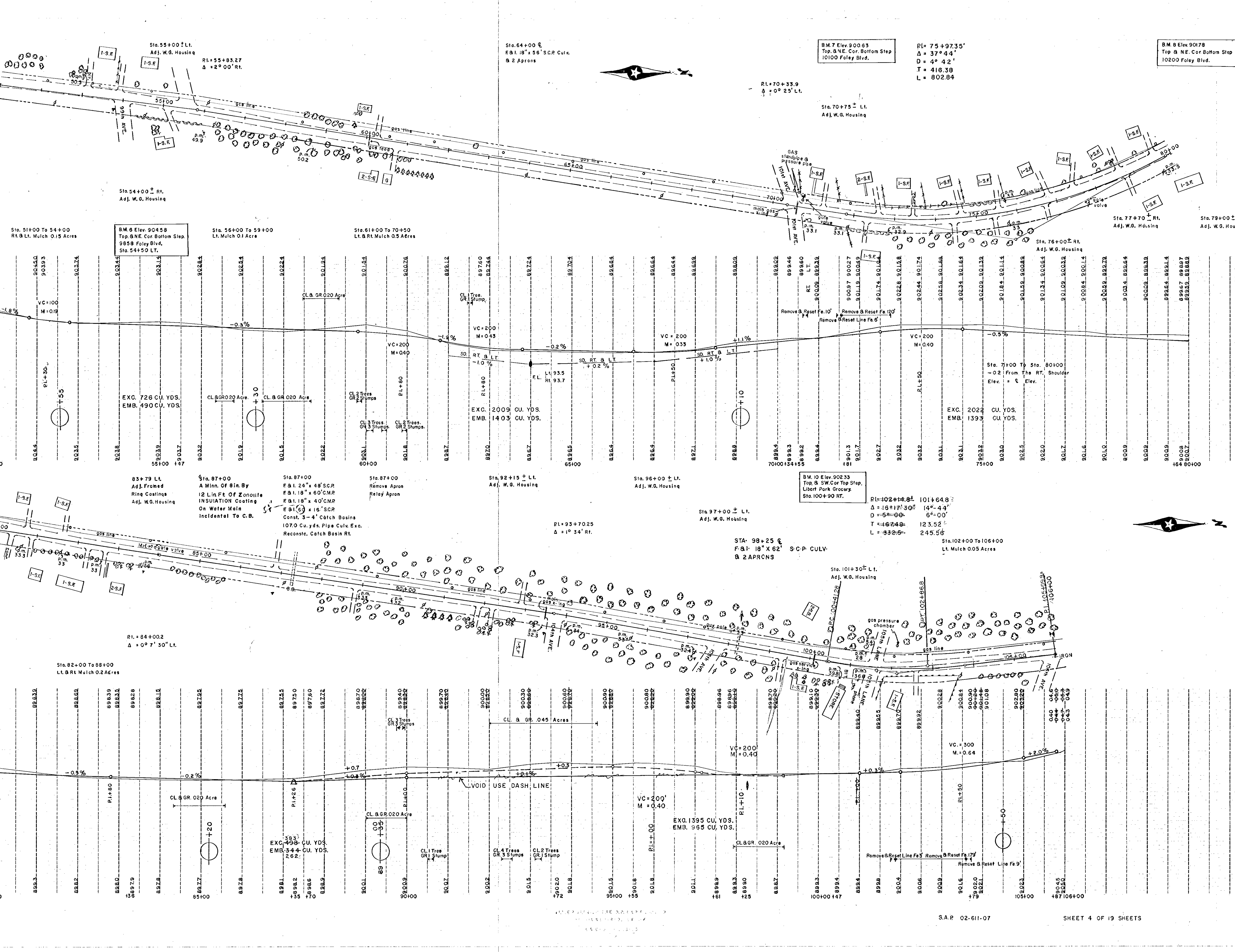
BM. 5 Elev. 909.34
Top N.E. Cor. Bottom Step
9748 Foley Blvd.
Sta. 46+15 Lt.

Sta. 50+10 Lt.
Adj. W.G. Housing

910
900
890
880



910
900
890
880



Sta. 55+00 ± Lt.
Adj. W.G. Housing
PI=55+83.27
Δ = 2° 00' Rt.

Sta. 64+00 ±
F&I 18" x 56' S.C.P. Culv.
2 Aprons

BM. 7 Elev. 900.63
Top & NE. Cor. Bottom Step
10100 Foley Blvd.

PI=75+97.35'
Δ = 37° 44'
D = 4° 42'
T = 416.38
L = 802.84

BM. 8 Elev. 901.78
Top & NE. Cor. Bottom Step
10200 Foley Blvd.

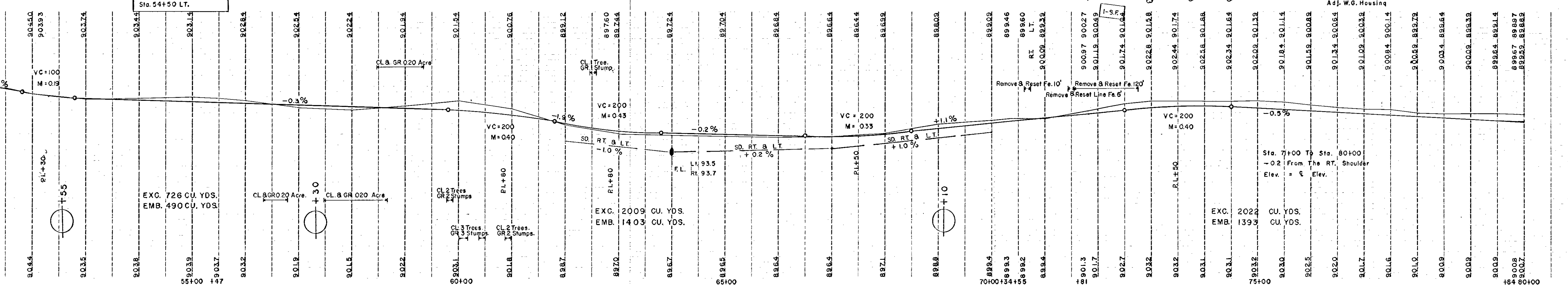
Sta. 51+00 To 54+00
Rt. & Lt. Mulch 0.15 Acres
BM. 6 Elev. 904.58
Top & NE. Cor. Bottom Step
9858 Foley Blvd.
Sta. 54+50 Lt.

Sta. 56+00 To 59+00
Lt. Mulch 0.1 Acre

Sta. 61+00 To 70+50
Lt. & Rt. Mulch 0.5 Acres

Sta. 76+00 ± Rt.
Adj. W.G. Housing

Sta. 79+00 ±
Adj. W.G. Hou

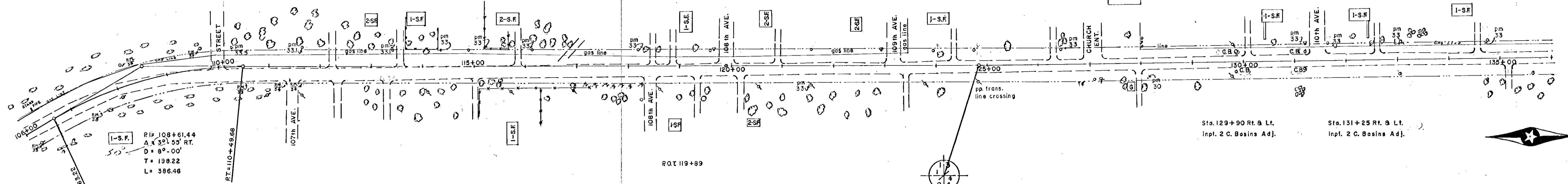


Sta. 108+00 To 110+00
Lt. Mulch .05 Acres

BM 11 Elev. 908.80
Top & NE. Cor. Bottom Step
60' LT. Sta. 119+10

RI = 124+83
A = 0° 33' 33"

Sta. 129+00 To 131+00
Lt. & Rt. Mulch .05 Acres

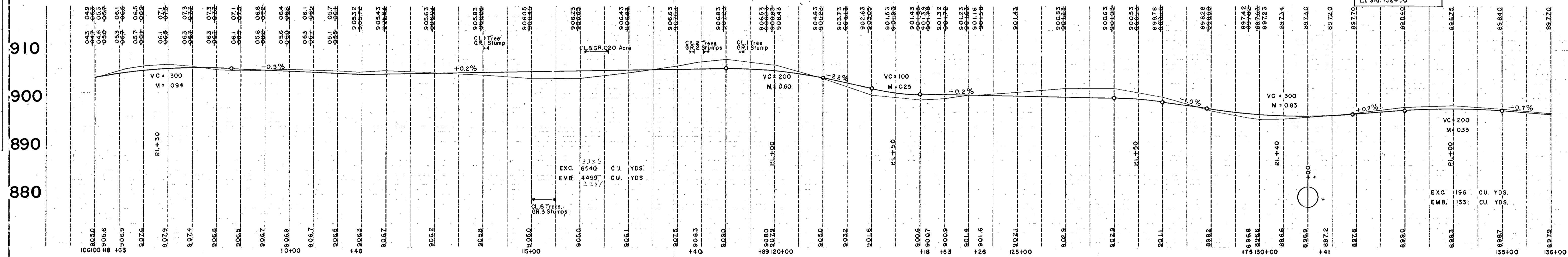


1-S.F. P.I. 108+61.44
A = 33° 15' RT.
D = 8° 00' RT.
T = 198.22
L = 386.48

Sta. 120+00 Lt.
Adj. Ring & Fra
Adj. W. G. Housing

Sta. 123+10 Lt.
Adj. W. G. Housing

BM 13 Elev. 899.77
Top & NE. Cor. Bottom Step
110'0' Foley Blvd.
LT. Sta. 132+50

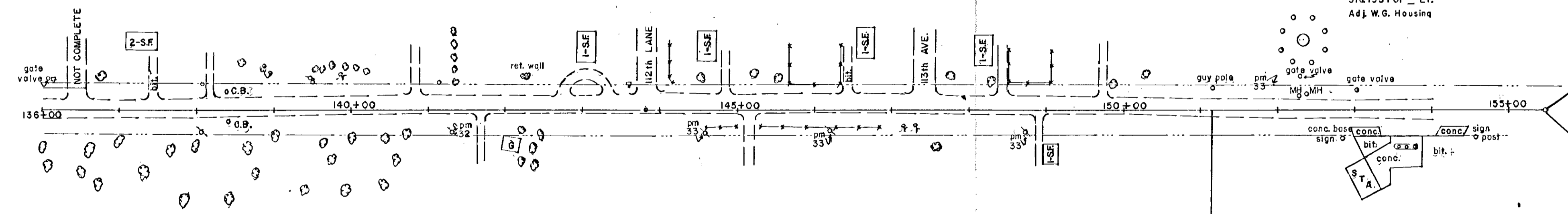


BM 14 Elev. 906.25
Top & NE. Cor. Bottom Back Step
404-112 Lane
LT. Sta. 143+00

P.O.T. 151+14.33
Sta. 152+36 & 152+26 Lt.
Adj. 2 Ring & Frame Castings

Sta. 153+01 Lt.
Adj. W. G. Housing

END S.A.P. 02-611-07
STA. 155+46



Sta. 138+40 Rt. & Lt.
Inpl. 2 C. Basins Adj.

P.O.T. 143+81.7

EM 15 Elev. 903.20
SW. Cor. Sidewalk Slab,
Sinclair Station.

Remov 3 SQ YDS CONC.
STA 153+15 RT.

