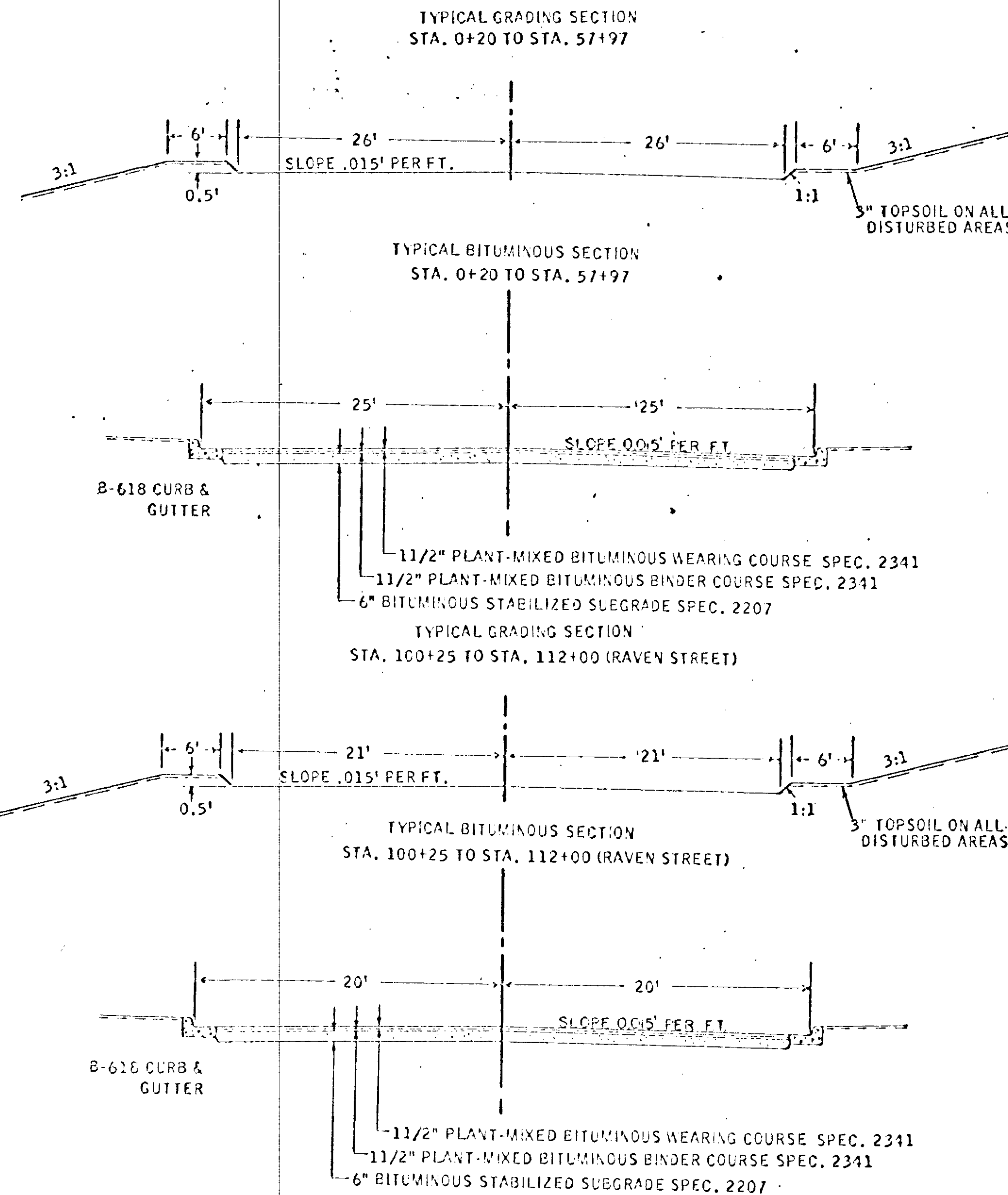


ITEM NO.	ITEM	UNIT	QUANTITY	CON. PARTIC.	TOTAL EST. QUANTITY
2051.503	FIELD LABORATORY TYPE C	EACH	1		1
2101.502	CLEARING	TREE	7		7
2101.507	GRUBBING	TREE	7		7
2104.501	REMOVAL PORTABLE CULVERTS	LIN. FT.	257		257
2104.506	REMOVE SIDEWALK	SQ. FT.	792		792
A-2104.510	REMOVE FENCE	LIN. FT.	46		46
A-557.621	RESET FENCE	LIN. FT.	46		46
2105.501	COMMON EXCAVATION	CU. YD.	9,336	700	10,036
2105.531	SALVAGED BITUMINOUS MIXTURE	CU. YD.	2,153	707	2,860
2130.501	WATER	M. GAL.	112	36	150
2207.503	BITUMINOUS MATERIAL FOR MIXTURE	GALLON	94,795	16,275	111,070
2207.512	BITUMINOUS STABL. SUBGRADE-6" THICK	SQ. YD.	30,579	5,250	35,829
2341.504	BITUMINOUS MATERIAL FOR MIXTURE	TON	281	47	328
2341.508	WEARING COURSE MIXTURE	TON	2,534	422	2,956
2341.510	BINDER COURSE MIXTURE	TON	2,534	422	2,956
2341.518	BITUMINOUS MATERIAL FOR DRIVEWAY REPLACEMENT	TON	53	19	72
2357.502	BITUMINOUS MATERIAL FOR TACK COAT	GALLON	1,535	256	1,791
2501.536	12" CONCRETE APRON	APRON	2		2
2503.502	12" REINFORCED CONCRETE SEWER CL.4	LIN. FT.	156	80	236
2503.502	15" REINFORCED CONCRETE SEWER CL.4	LIN. FT.	1,520	800	2,320
2503.502	18" REINFORCED CONCRETE SEWER CL.4	LIN. FT.	82	72	154
2506.507	CONSTRUCT CATCH BASIN, A. OR F.	LIN. FT.	17.4	0.3	17.7
2506.507	CONSTRUCT CATCH BASIN, C. OR G.	LIN. FT.	15.2	7.9	23.1
2506.511	CASTING ASSEMBLY	ASSEM.	14	4	18
2506.522	ADJUST FRAME & RING CASTING	ASSEM.	39	4	43
2506.555	ADJUST WATER HOUSING	HOUSING	2	1	3
B-2521.501	4" CONCRETE WALK	SQ. FT.	792	450	1,242
2531.501	CONCRETE CURB & GUTTER DESIGN B-618	LIN. FT.	11,580	2,340	13,920
2575.505	SODDING	SQ. YD.	5,816	755	6,571
2575.551	TOPSOIL	CU. YD.	577	80	657

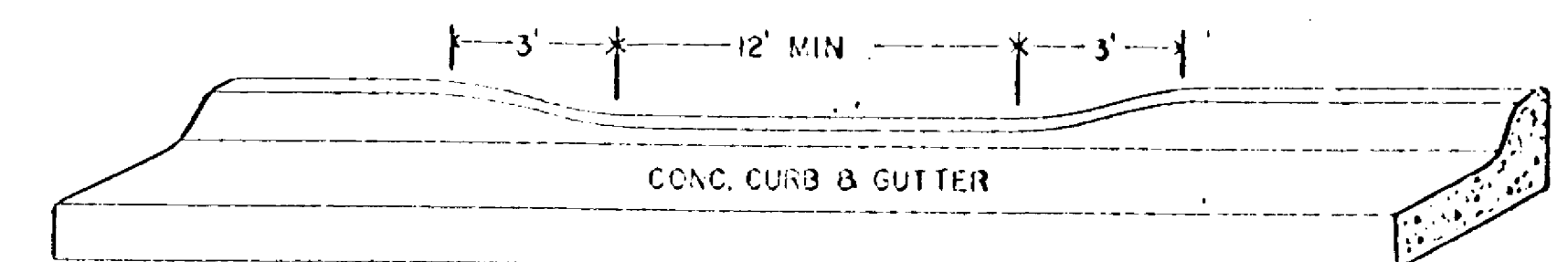
A- 6" CHAIN LINK FENCE IN CONCRETE  
B- THE ITEM OF 1903 SHALL NOT APPLY



ADJUST ITEMS

STATION	LOCATION	TYPE
0+21	20' RT.	WATER GATE VALVE
0+38	10' LT.	SAN. M.H.
3+60	10' LT.	SAN. M.H.
6+90	10' LT.	SAN. M.H.
7+20	20' RT.	WATER GATE VALVE
10+62	17' RT.	WATER M.H.
10+86	10' LT.	SAN. M.H.
14+44	10' LT.	SAN. M.H.
18+05	10' LT.	SAN. M.H.
21+37	10' LT.	SAN. M.H.
24+68	10' LT.	SAN. M.H.
25+38	10' LT.	SAN. M.H.
39+54	4' LT.	SAN. M.H.
41+15	7' LT.	SAN. M.H.
42+48	18.5' RT.	STORM M.H.
43+37	10' LT.	SAN. M.H.
44+56	18.5' RT.	STORM M.H.
45+44	CENTER	SAN. M.H.
46+65	18.5' RT.	STORM M.H.
47+10	24' LT.	C.B.
47+10	24' RT.	C.B.
47+90	CENTER	SAN. M.H.
51+35	CENTER	SAN. M.H.
51+45	24' LT.	C.B.
51+45	24' RT.	C.B.
53+83	CENTER	SAN. M.H.
54+90	CENTER	SAN. M.H.
57+50	CENTER	SAN. M.H.
102+25	1' RT.	SAN. M.H.
104+61	1' RT.	SAN. M.H.
105+00	19' RT.	WATER GATE VALVE
107+00	CENTER	SAN. M.H.
109+40	CENTER	SAN. M.H.
39+00	24' RT.	C.B.
39+73	24' RT.	STORM M.H.
40+10	24' RT.	C.B.
40+55	24' RT.	C.B.

CURB OPENINGS AT ENTRANCES



The following Standard Detail plates, approved by the Bureau of Public Roads, shall apply on this project

PLATE NO.	DESCRIPTION
3000F	REINFORCED CONCRETE PIPE
3006A	GASKET JOINT FOR R.C. PIPE
3100F	CONCRETE APRON FOR REINFORCED CONCRETE PIPE
4000G - 4002D	
4005H - 4006G	MANHOLE OR CATCH BASIN
4101B	RING CASTING FOR MANHOLE OR CATCH BASIN
4110D	COVER CASTING FOR MANHOLE
4126D	CATCH BASIN FRAME CASTING
4149C	GRATE CASTING FOR CATCH BASIN
4161E	CURB BOX CASTING FOR CATCH BASIN
7100D	CONCRETE CURB & GUTTERS
7111D	INSTALLATION OF CATCH BASIN CASTINGS
8000C	STANDARD BARRICADES
8008D	CONTRACTORS SIGN
0001A	SPECIFICATION REFERENCE TO STANDARD PLATES

BASIS OF PLANNED QUANTITIES

- 2207 BITUMINOUS STABILIZED SUBGRADE
- BITUMINOUS MAT'L. FOR MIX. 0.50 GAL. PER SQ. YD. PER INCH OF THICKNESS
- BITUMINOUS MAT'L. FOR FOG 0.10 GAL. PER SQ. YD.
- 2341 PLANT MIXED BITUMINOUS BINDER COURSE
- BITUMINOUS MIXTURE 165 LBS. PER SQ. YD.
- BITUMINOUS MATERIAL FOR MIXTURE 4.5% BY WEIGHT
- 2341 PLANT MIXED BITUMINOUS WEARING COURSE
- BITUMINOUS MIXTURE 165 LBS. PER SQ. YD.
- BITUMINOUS MATERIAL FOR MIXTURE 6.5% BY WEIGHT
- 2357 BITUMINOUS MATERIAL FOR TACK COAT 0.05 GAL. PER SQ. YD.

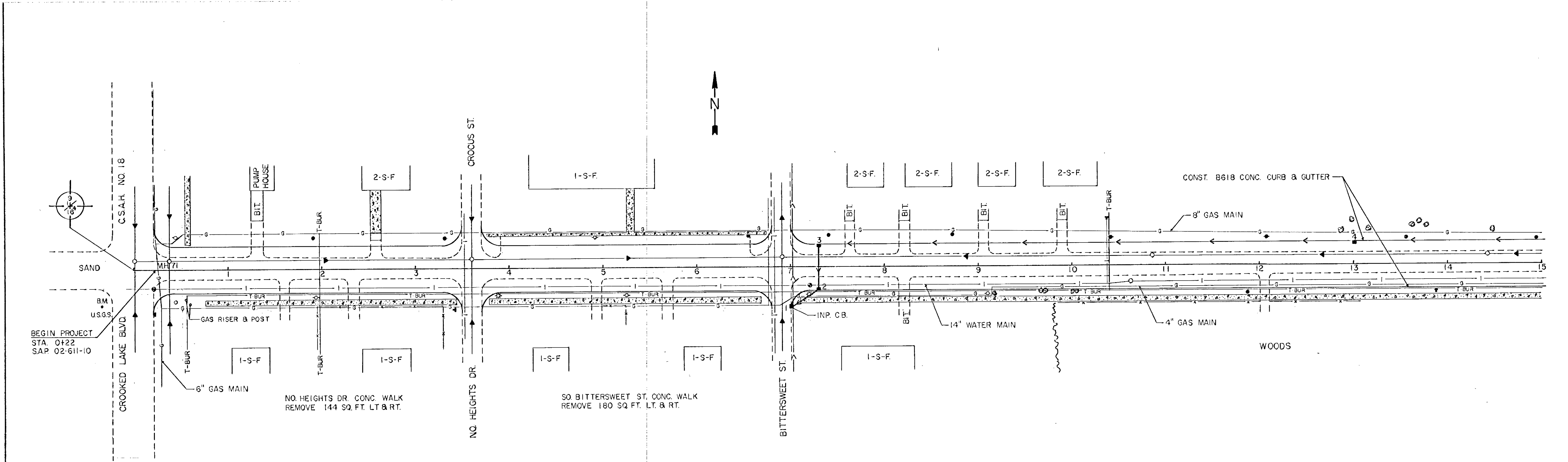
STORM SEWER SYSTEM

NO.	STATION	LOCATION	REMARKS	TYPE	DESIGN	LIN. FT.	TOP CAST	OUTLET	F.I. CAST ASSEM.	DRAIN TO	F.&I. 12" R.C.P. CL. 1	F.&I. 15" R.C.P. CL. 1	F.&I. 18" R.C.P. CL. 1
1	7+01	41' RT.	Adj.	C.B.	INP		867.80	INP		C.B.#1			
2	7+30	24' RT.		C.B.	AGF	8.7	868.08	859.22	A	C.B.#2			
3	7+30	24' LT.		C.B.	AGF	8.6	868.08	859.32	A	C.B.#2			
4	13+00	24' LT.		C.B.	AGF	8.4	869.30	860.66	A	C.B.#3			
5	17+65	24' LT.		C.B.	AGF	6.0	867.81	861.59	A	C.B.#4		570'	
6	17+65	24' RT.		C.B.	AGF	3.7	867.81	861.00	A	C.B.#5	50'	165'	
7	21+00	24' LT.		C.B.	CG	3.9	866.34	862.26	A	C.B.#5		335'	
8	21+00	24' RT.		C.B.	CG	3.8	866.34	862.36	A	C.B.#7		50'	
9	21+70	24' RT.		C.B.	CG	3.8	866.50	862.50	A	C.B.#8	70'		
10	107+00	19' RT.		C.B.	CG	4.0	866.50	862.31	A	C.B.#11	40'		
11	107+00	19' LT.		C.B.	AGF	4.2	866.50	862.11	A	C.B.#13		800'	
12	101+00	19' RT.		C.B.	CG	3.9	862.40	858.31	A	C.B.#13	40'		
13	101+00	19' LT.		C.B.	AGF	4.1	862.40	858.11	A	M.H.#19			72'
14	39+00	24' RT.		C.B.	BY OTHERS		863.10	858.04	C	M.H.#19		BY OTHERS	
15	39+00	24' LT.		C.B.	AGF	5.1	863.10	858.19	C	C.B.#14		50'	
16	40+10	24' LT.		C.B.	AGF	5.2	863.21	857.80	A	C.B.#17		50'	
17	40+10	24' RT.		C.B.	BY OTHERS		865.21	857.60	A	C.B.#18		BY OTHERS	
18	40+55	24' RT.		M.H.	BY OTHERS		865.31	857.40	A	OUTLET		BY OTHERS	
19	39+73	24' RT.		M.H.	BY OTHERS		863.18	857.75	B	C.B.#17		BY OTHERS	
20	39+00	40' RT.		APRON				858.00		C.B.#14	16'		
21	39+00	44' LT.		APRON				858.20		C.B.#15	20'		

CASTINGS					
	GRATE	FRAME	CURB BOX	HGT.	USE
A	810	801	821-B	0.87	C.B.
B	711	700-7		0.58	M.H.
C	NEENAH	R-3246		0.50	C.B.

3-11-10  
 S.A.P.  
 NOTE: WORK, REVISIONS, CALCULATIONS, AND MATERIALS TO BE USED SHALL BE AS SHOWN ON THIS SHEET.  
 NO. OF SHEETS: 12

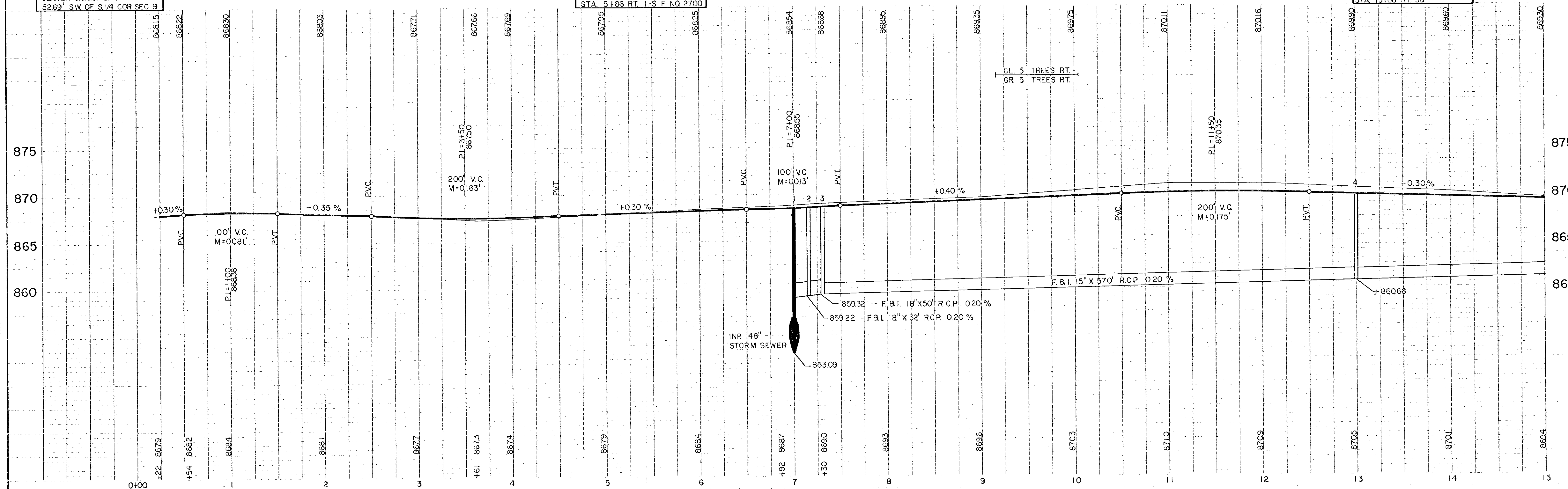
3-11-10  
 S.A.P.  
 NOTE: WORK, REVISIONS, CALCULATIONS, AND MATERIALS TO BE USED SHALL BE AS SHOWN ON THIS SHEET.  
 NO. OF SHEETS: 12



B.M. NO. 1 ELEV. 869.45  
 CENTER USGS. B.M.  
 52.69' SW. OF S/4 COR SEC 9

B.M. NO. 2 ELEV. 870.55  
 TOP & N.W. COR. BOT. STEP N  
 STA 5+186 RT. I-S-F NO 2700

B.M. NO. 3 ELEV. 872.84  
 TOP & N.W. FLANG BOLT HYD.  
 STA 13+188 RT. 30'

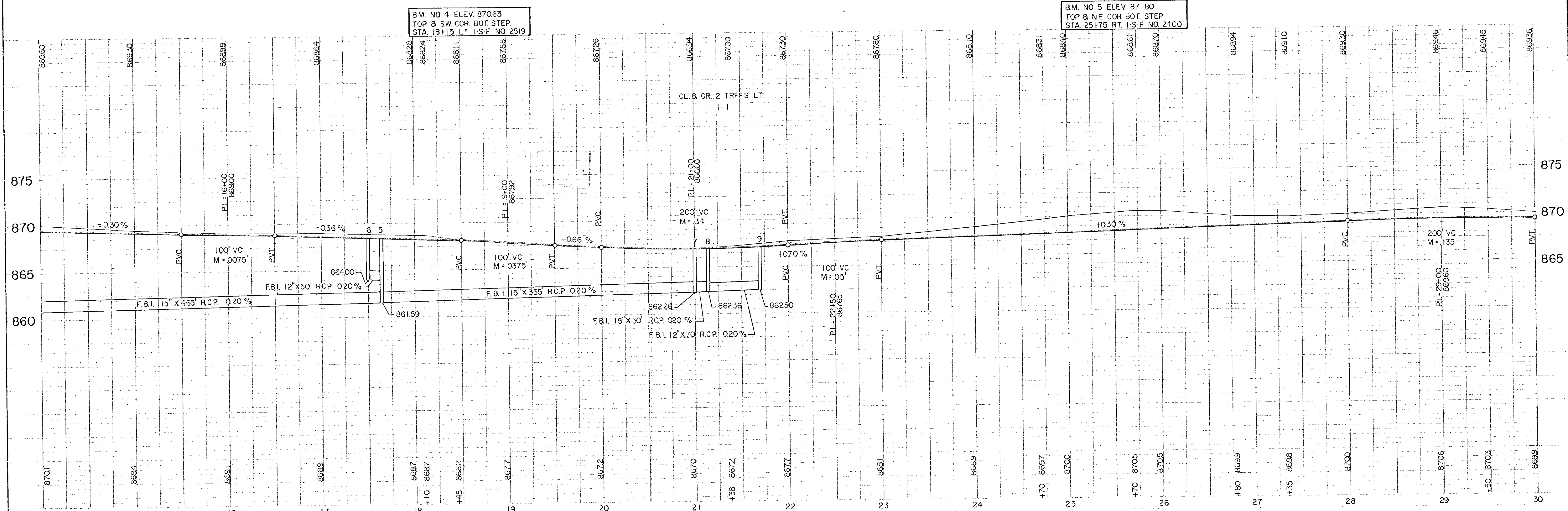
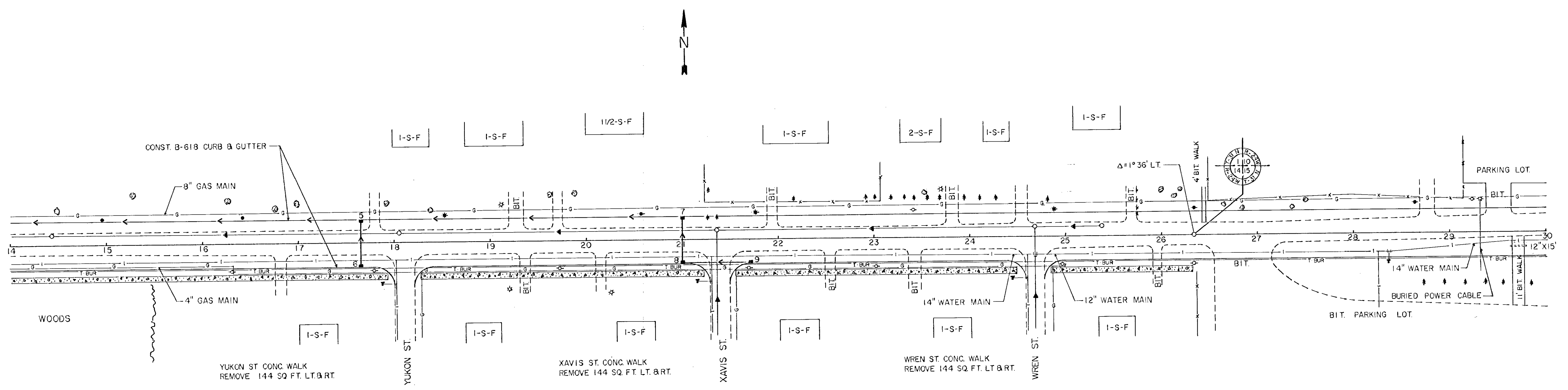


K&K  
 KENNEDY & KENNEDY  
 CIVIL ENGINEERS  
 1111 1/2 N. 10TH ST.  
 SUITE 100  
 DENVER, CO 80202



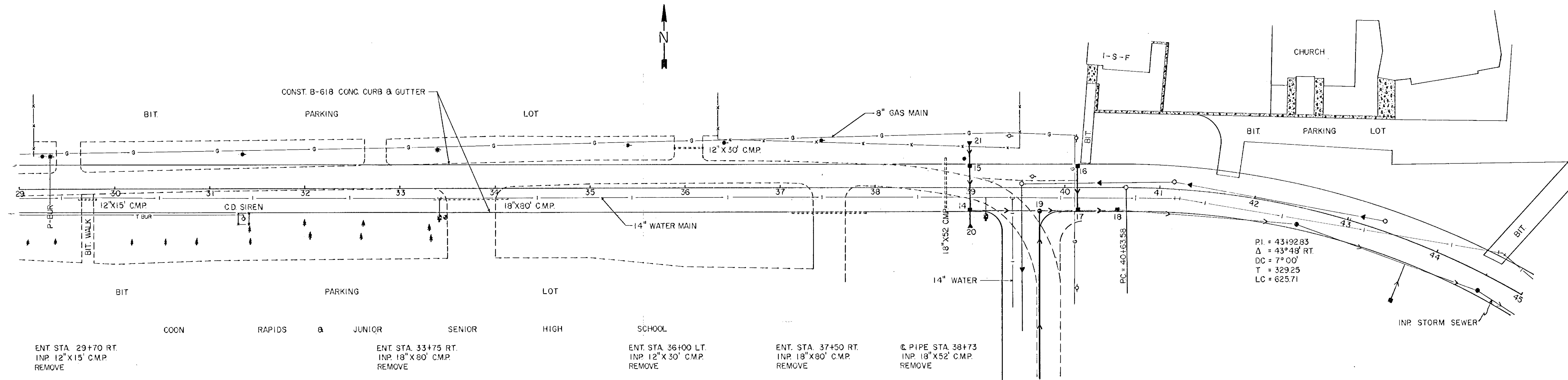
SURVEYED  
 PLOTTED  
 CHECKED  
 DATE  
 NO.

SURVEYED  
 PLOTTED  
 CHECKED  
 DATE  
 NO.



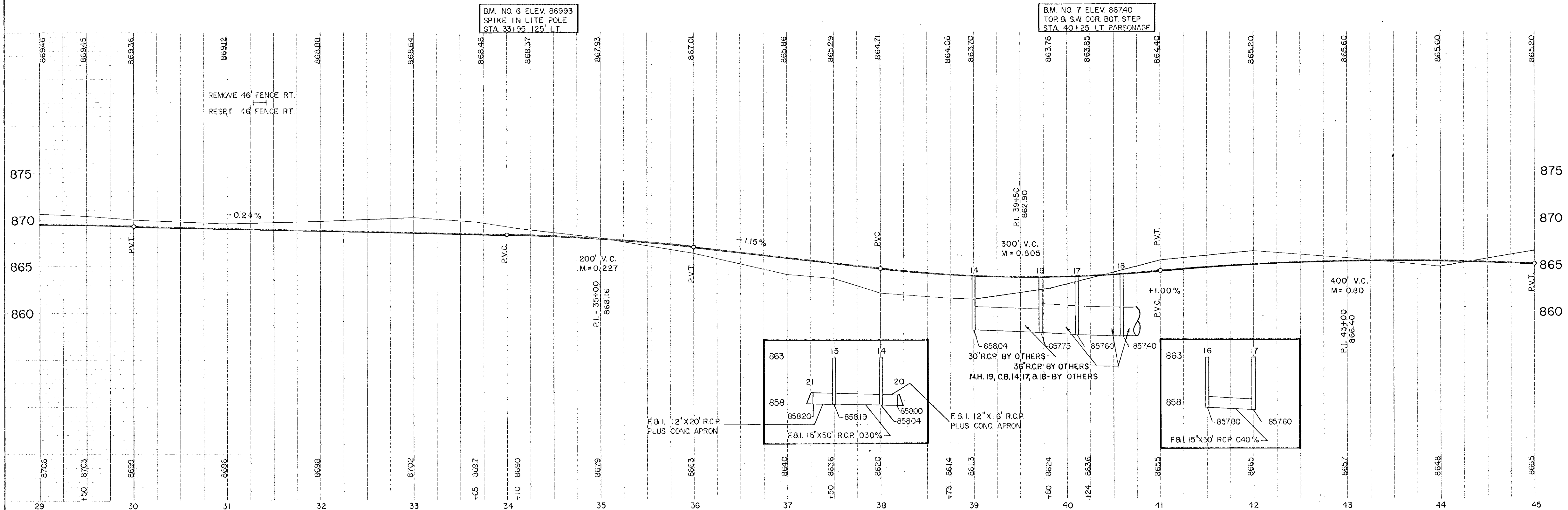
PACIFIC ENGINEERING  
 1001 W. 10th Street  
 Vancouver, B.C. V6H 2G6  
 TEL: 604-271-1111  
 FAX: 604-271-1112  
 NO. 1001 W. 10th Street  
 Vancouver, B.C. V6H 2G6

PACIFIC ENGINEERING  
 1001 W. 10th Street  
 Vancouver, B.C. V6H 2G6  
 TEL: 604-271-1111  
 FAX: 604-271-1112  
 NO. 1001 W. 10th Street  
 Vancouver, B.C. V6H 2G6



P.I. = 43+92.83  
 $\Delta$  = 43° 48' RT.  
 DC = 7° 00'  
 T = 329.25  
 LC = 625.71

ENT. STA. 29+70 RT. INP. 12"X15' C.M.P. REMOVE  
 ENT. STA. 33+75 RT. INP. 18"X80' C.M.P. REMOVE  
 ENT. STA. 36+00 LT. INP. 12"X30' C.M.P. REMOVE  
 ENT. STA. 37+50 RT. INP. 18"X80' C.M.P. REMOVE  
 C. PIPE STA. 38+73 INP. 18"X52' C.M.P. REMOVE



B.M. NO. 6 ELEV. 86993  
 SPIKE IN LITE POLE  
 STA. 33+95 125' LT.

B.M. NO. 7 ELEV. 86740  
 TOP & SW COR. BOT. STEP  
 STA. 40+25 LT. PARSONAGE

F&I. 12"X20' R.C.P.  
 PLUS CONC. APRON

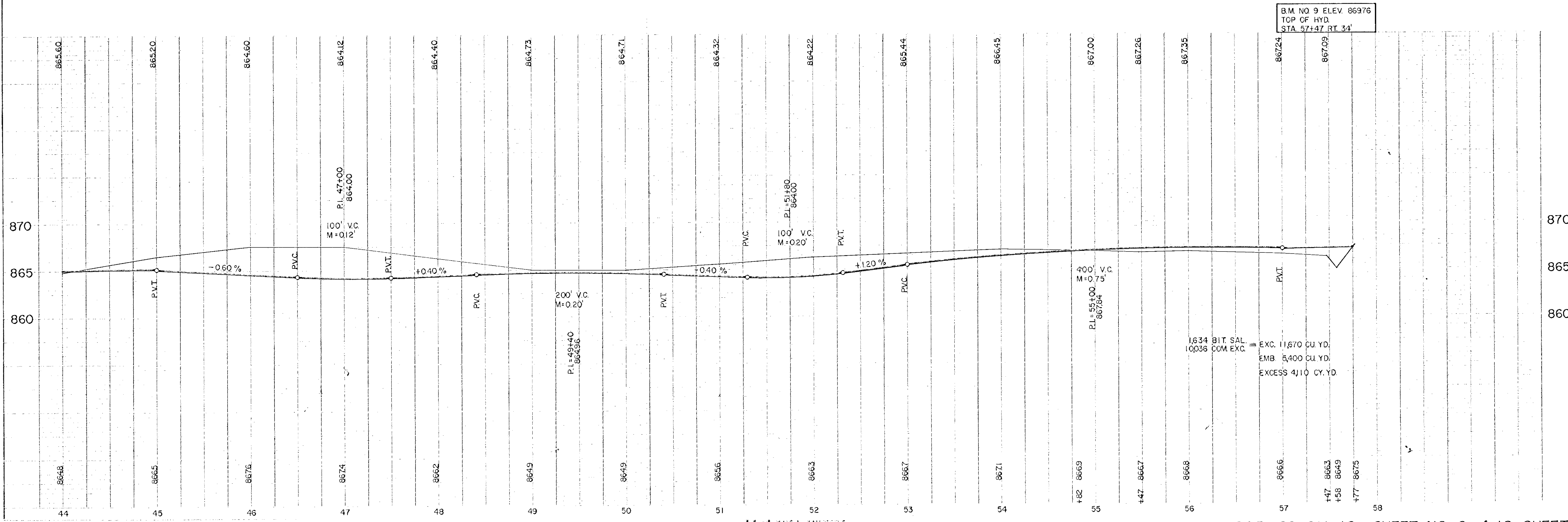
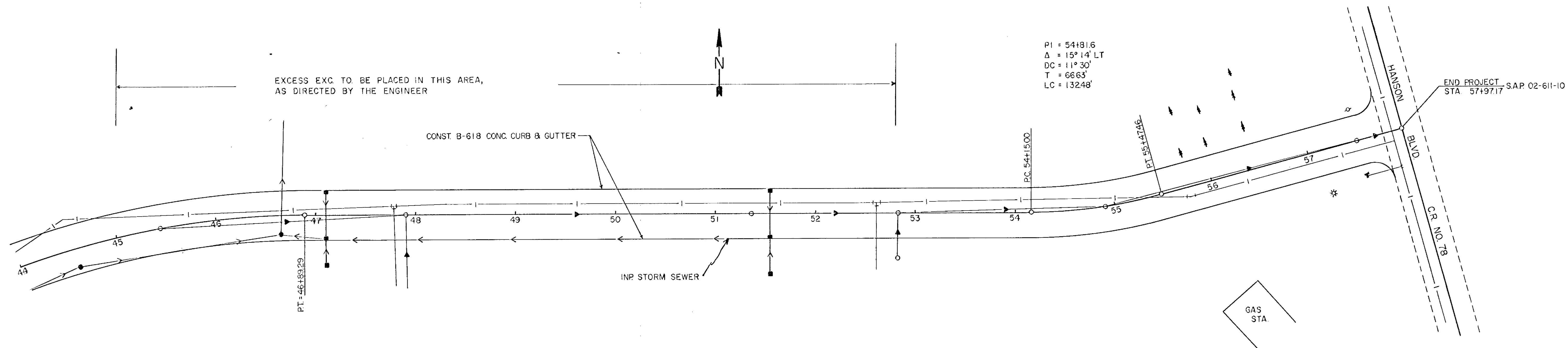
F&I. 12"X16' R.C.P.  
 PLUS CONC. APRON

F&I. 15"X50' R.C.P. 0.40%

MAKE 1/2" MANHOLE  
 12" X 16" R.C.P.

PROJECT: **ROADWAY**  
 SHEET NO.: **6**  
 DATE: **NOV 10 2010**  
 DRAWN BY: **...**  
 CHECKED BY: **...**  
 IN CHARGE: **...**  
 NO. OF SHEETS: **12**

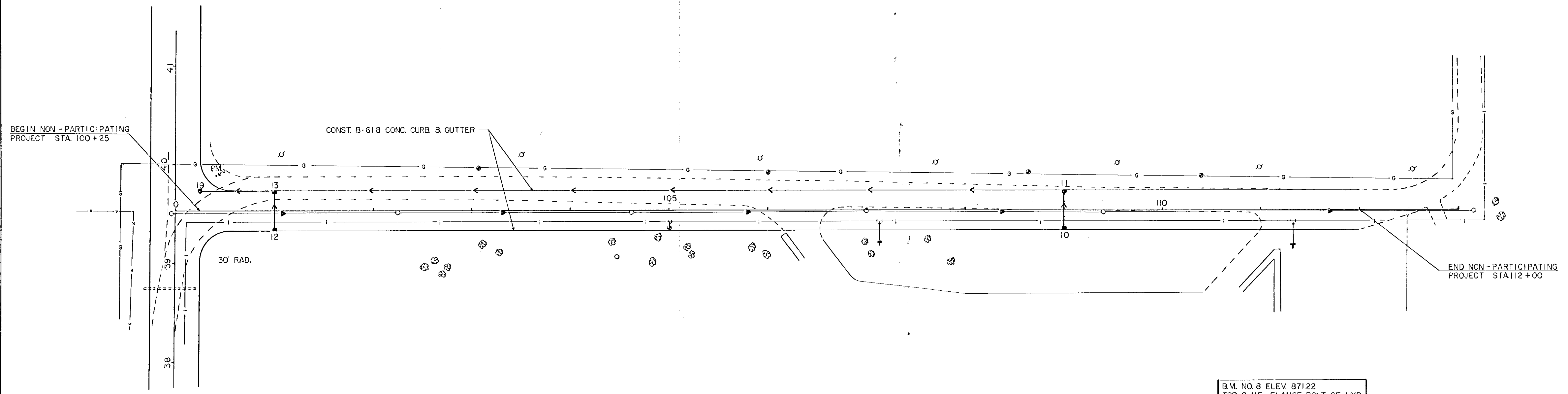
PROJECT: **ROADWAY**  
 SHEET NO.: **6**  
 DATE: **NOV 10 2010**  
 DRAWN BY: **...**  
 CHECKED BY: **...**  
 IN CHARGE: **...**  
 NO. OF SHEETS: **12**



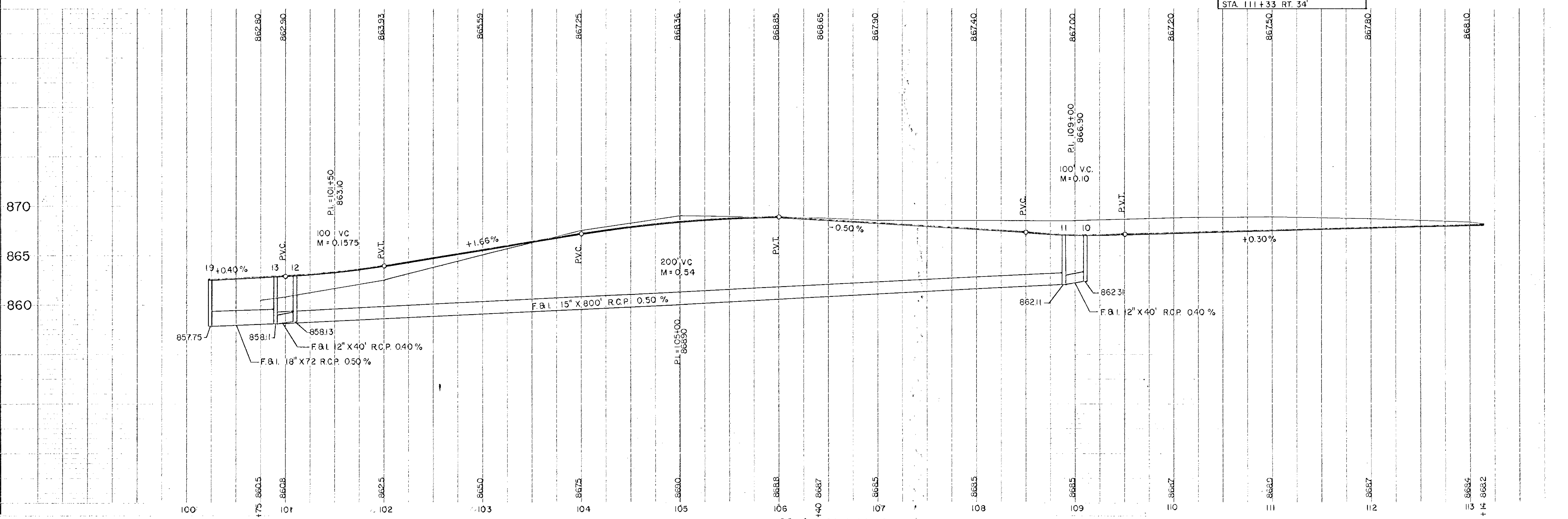
1,634 BIT. SAL. = EXC. 11,670 CU. YD.  
 10036 COM. EXC. = EMB. 5,400 CU. YD.  
 EXCESS 4,110 CY. YD.



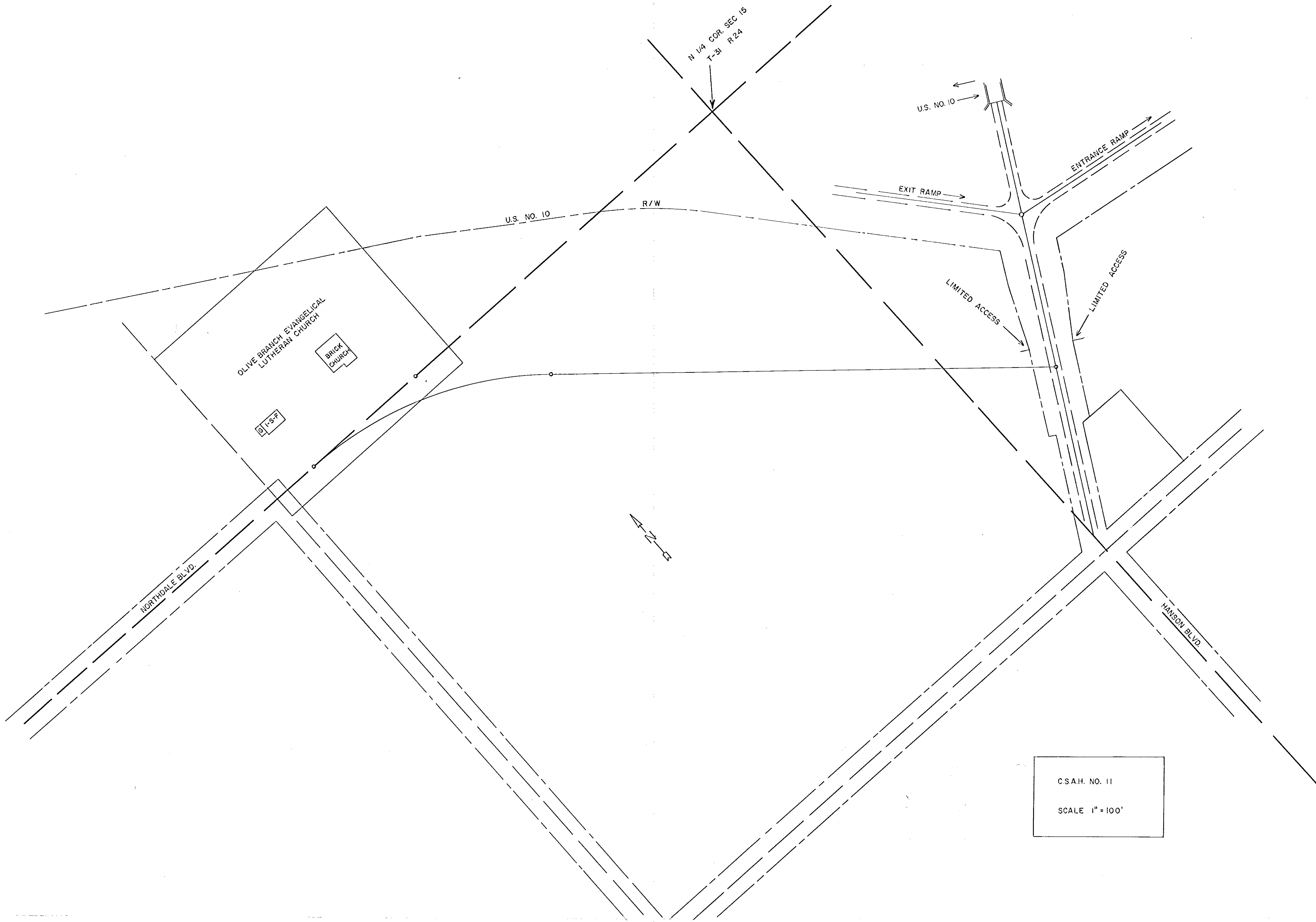
P.V. BLANKET  
 PROJECT NO. 02-611-10  
 NOTE BOOK NO. 100  
 AT 1/2" VERT. SCALE  
 DATE 10/1/02



P.V. BLANKET  
 PROJECT NO. 02-611-10  
 NOTE BOOK NO. 100  
 AT 1/2" VERT. SCALE  
 DATE 10/1/02



B.M. NO. 8 ELEV. 871.22  
 TOP & NE. FLANGE BOLT. OF HYD.  
 STA. 111+33 RT. 34'



CSA.H. NO. 11  
SCALE 1" = 100'