

# CITY OF COON RAPIDS

## ANOKA COUNTY, MINNESOTA CONSTRUCTION PLANS FOR SIGNALIZATION

**PROJECT NO. 114-116-08 MTB, C.P. 75-10**  
COON RAPIDS BLVD. & FOLEY BLVD.

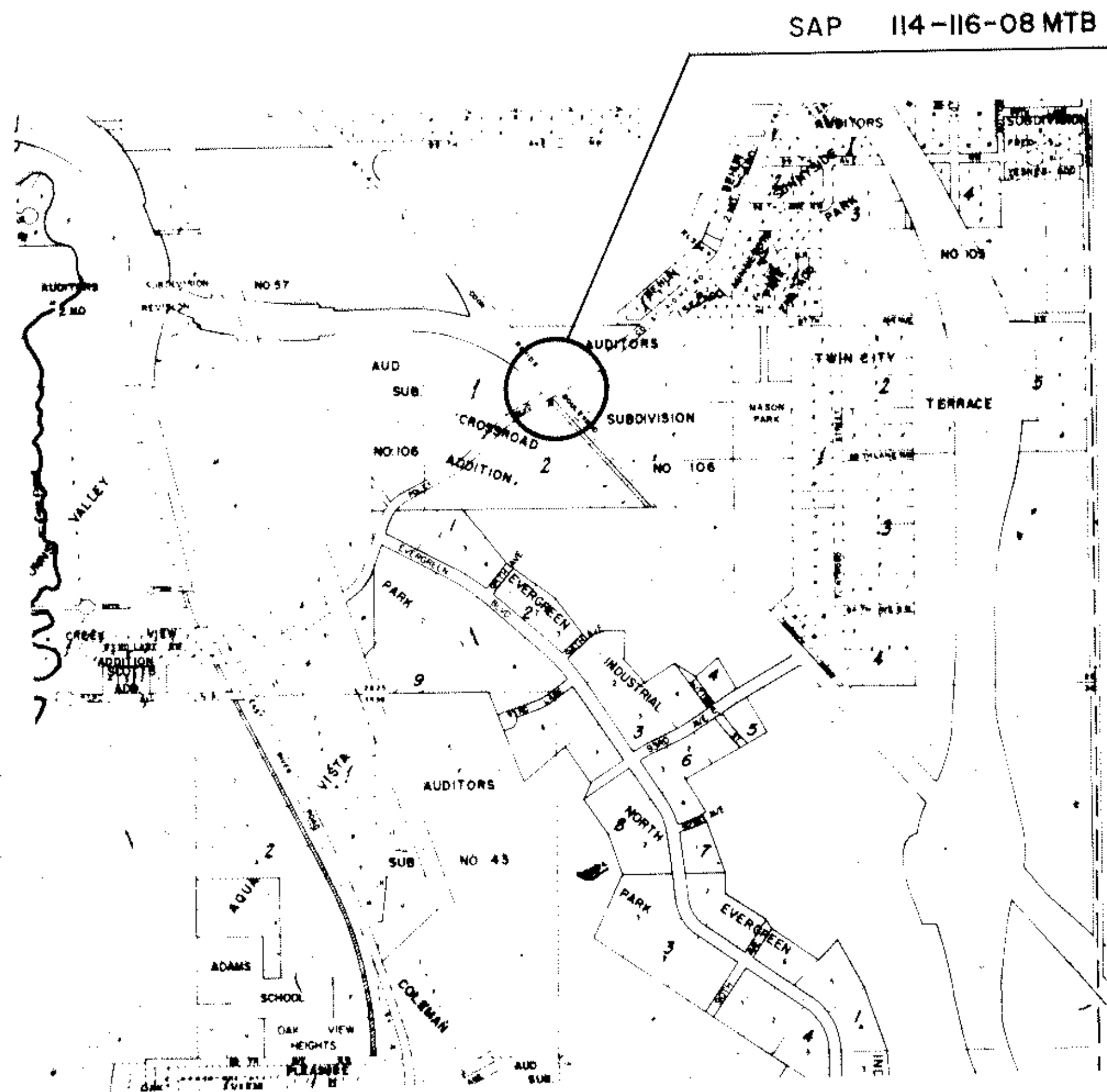
Fed. Proj. No.

### SPECIFICATIONS

THE STATE OF MINNESOTA, DEPT. OF HIGHWAYS "STANDARD SPECIFICATIONS FOR HIGHWAY CONSTRUCTION", DATED JANUARY 1, 1972 AND AMENDED BY "SUPPLEMENTAL SPECIFICATION" DATE JANUARY 1, 1974 SHALL GOVERN.

### CONVENTIONAL SYMBOLS

EXISTING	ITEM	PROPOSED
	SANITARY SEWER	
	FORCEMAIN	
	WATERMAIN	
	STORM SEWER	
	CULVERT	
	SIGNAL AND CONDUIT	
	LIGHT STANDARD	
	SIGN	
	FENCE	
	GUARDRAIL	
	RIGHT OF WAY	
	PROPERTY LINE	
	CONTOURS	
	PUBLIC UTILITIES	
	TELEPHONE	
	POWER	
	GAS	



### INDEX

#### SHEET NO.

- 1
- 2
- 3
- 4

#### DESCRIPTION

- TITLE SHEET
- LAYOUT
- WIRING DIAGRAM
- LOOP DETECTOR

### DESIGN DATA

ANTICIPATED ADT : 12000-24000  
ANTICIPATED HCADT : OVER 1100  
PAVEMENT DESIGN : 9 TON  
SOIL FACTOR : A-3  
DESIGN SPEED : 50 M.P.H.

Recommended for Approval *[Signature]* Date 3-10-75  
Recommended for Approval *[Signature]* Date 2-5-75  
Recommended for Approval *[Signature]* Date 2-28-75  
Approved *[Signature]* Date 3/3/75

### REVISIONS

SHEET NO.	BY	SHEET NO.	BY
2 of 4	DR		
ADD 4	DR		

I hereby certify that this plan, specification, or report was prepared by me or under my direct supervision and that I am a duly Registered Professional Engineer under the laws of the State of Minnesota.

*[Signature]*  
Date 1/2/75 Reg. No. 9075



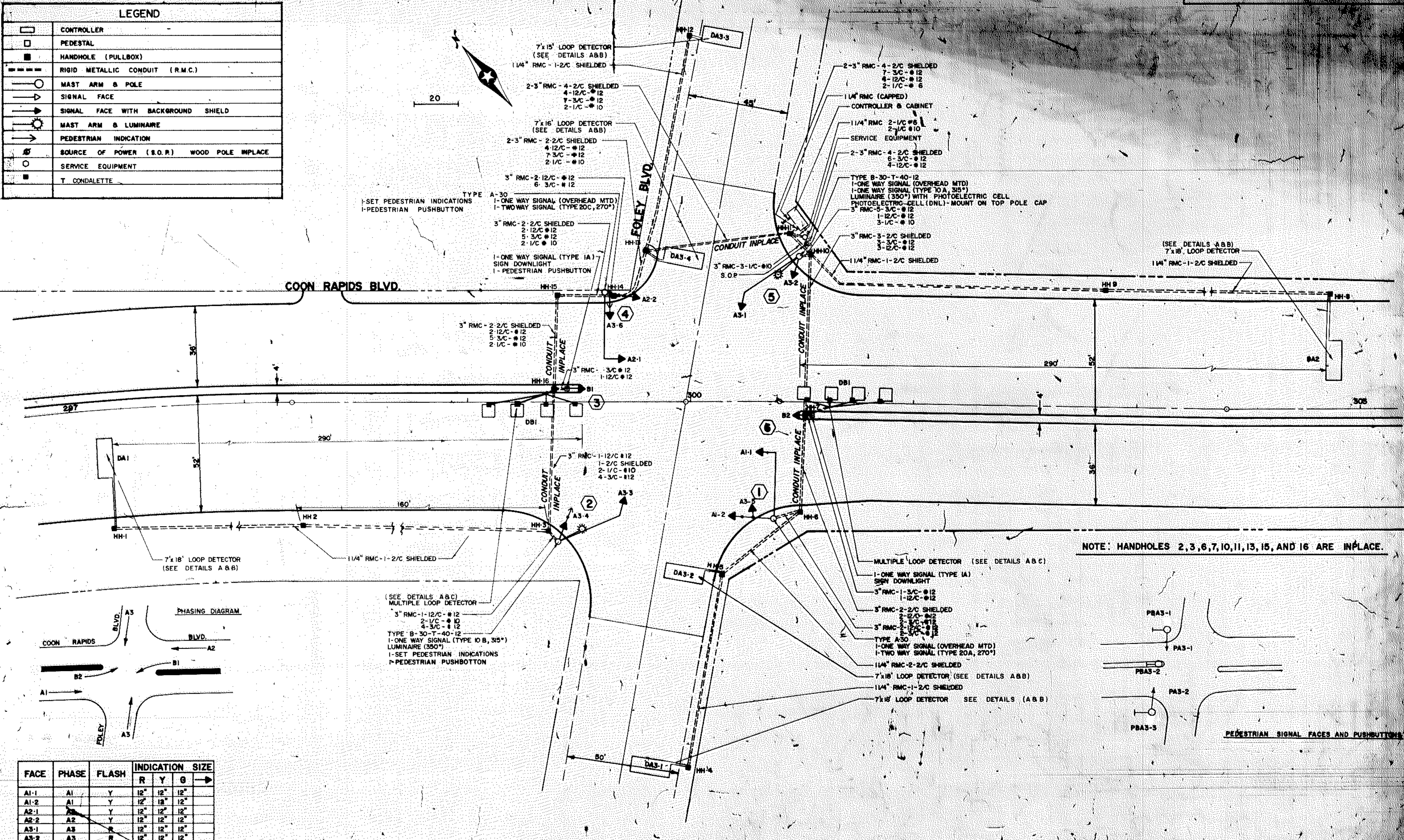
SAP 114-116-08 MTB

Sheet No. 1 of 4

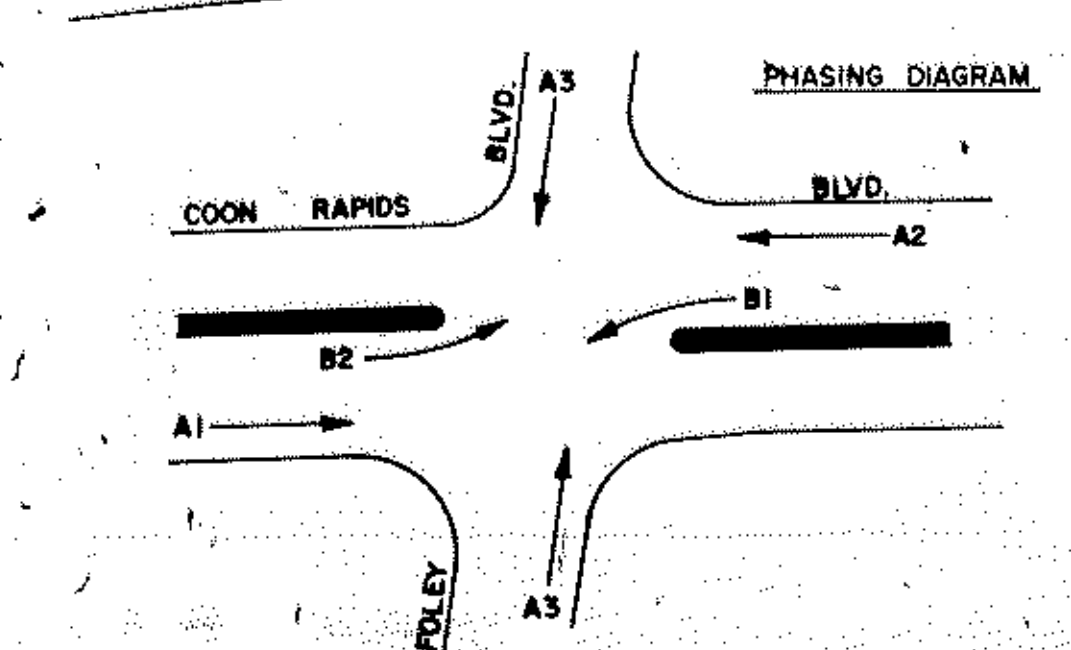


**LEGEND**

	CONTROLLER
	PEDESTAL
	HANDHOLE (PULLBOX)
	RIGID METALLIC CONDUIT (R.M.C.)
	MAST ARM & POLE
	SIGNAL FACE
	SIGNAL FACE WITH BACKGROUND SHIELD
	MAST ARM & LUMINAIRE
	PEDESTRIAN INDICATION
	SOURCE OF POWER (S.O.P.) WOOD POLE IMPLACE
	SERVICE EQUIPMENT
	T CONDALETTE

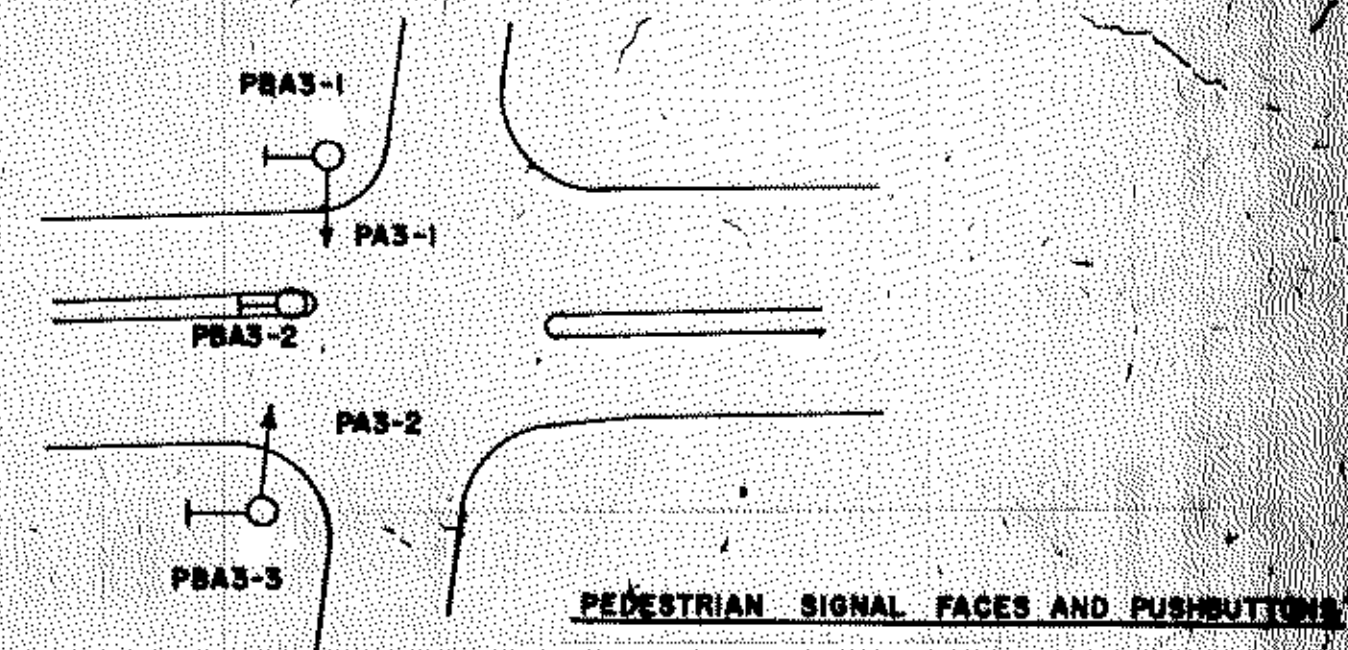


NOTE: HANDHOLES 2,3,6,7,10,11,13,15, AND 16 ARE INPLACE.



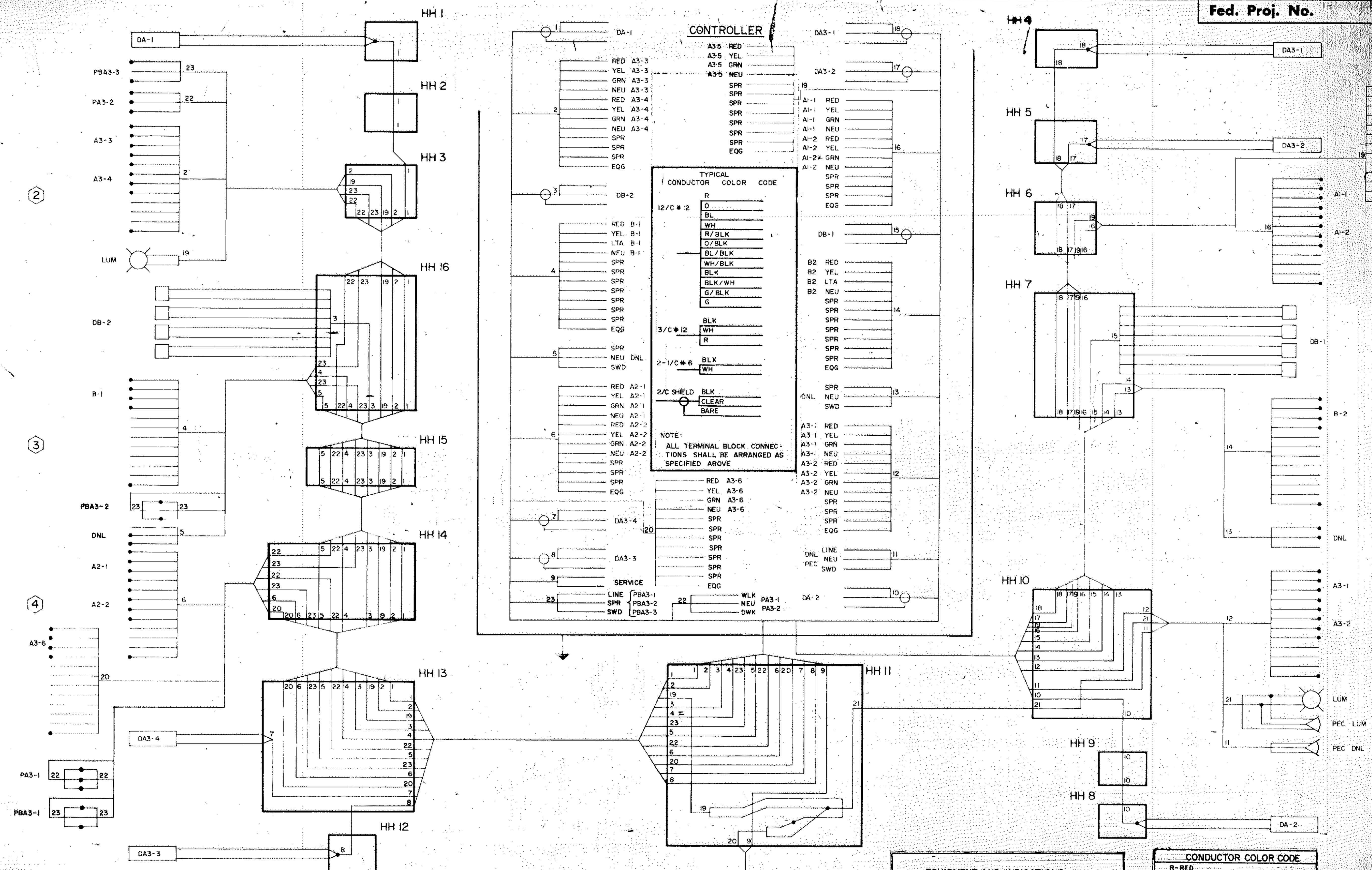
FACE	PHASE	FLASH	INDICATION SIZE		
			R	Y	G
A1-1	A1	Y	12"	12"	12"
A1-2	A1	Y	12"	18"	12"
A2-1	A2	Y	12"	12"	12"
A2-2	A2	Y	12"	12"	12"
A3-1	A3	R	12"	12"	12"
A3-2	A3	R	12"	12"	12"
A3-3	A3	R	12"	12"	12"
A3-4	A3	R	12"	12"	12"
A3-5	A3	R	12"	12"	12"
A3-6	A3	R	12"	12"	12"
B1	B1	Y	12"	12"	12"
B2	B2	Y	12"	12"	12"

\*OPTICALLY PROGRAMMED SIGNAL FACE



SIGNAL LAYOUT  
COON RAPIDS BLVD. at  
FOLEY BLVD.





- NOTES:**
1. Provide terminal strins in the base of all standards with terminals for all conductors in standard with exception of conductors for street lights.
  2. No splices are to be made in hand holes except for dete connections and street light circuits.
  3. Provide in-line fuses in base of each standard for street lights.
  4. Ground conductors are not shown. Install grounding as specified.

**EQUIPMENT AND INDICATIONS**

RED-RED	B3(eq)- SIGNAL HEAD-PHASE 'B'
YEL-YELLOW	DA-4(eq)- DETECTOR-PHASE 'A'
GRN-GREEN	HH- HANDHOLE
LTA- LEFT TURN ARROW	GRR- GROUND ROD
RTA- RIGHT TURN ARROW	SERV-SERVICE
WLK- WALK	ST LHT- STREET LIGHT
NEU- NEUTRAL	S.O.P.- SOURCE OF POWER
DWK- DON'T WALK	SPR- SPARE CONDUCTOR
LUM- LUMINAIRE	— SPLICE
SWD- SWITCHED	PEC- PHOTOELECTRIC CELL
DNL- DOWNLIGHT	EQG- EQUIPMENT GROUND

**CONDUCTOR COLOR CODE**

R- RED
O- ORANGE
BL- BLUE
WH- WHITE
R/BLK- RED WITH BLACK TRACER
O/BLK- ORANGE WITH BLACK TRACER
BL/BLK- BLUE WITH BLACK TRACER
WH/BLK- WHITE WITH BLACK TRACER
BLK- BLACK
BLK/WH- BLACK WITH WHITE TRACER
G/BLK- GREEN WITH BLACK TRACER



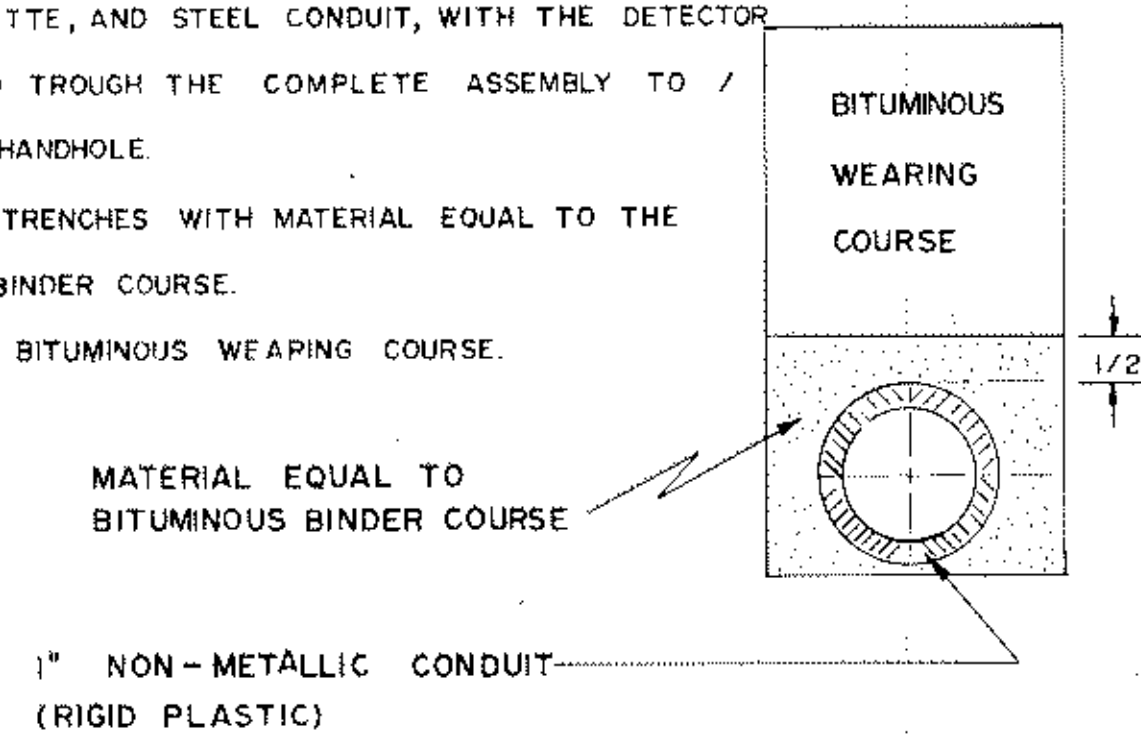
CONDUIT INSTALLATION DETAIL "A"

FOR LOOP DETECTOR

SCALE NONE

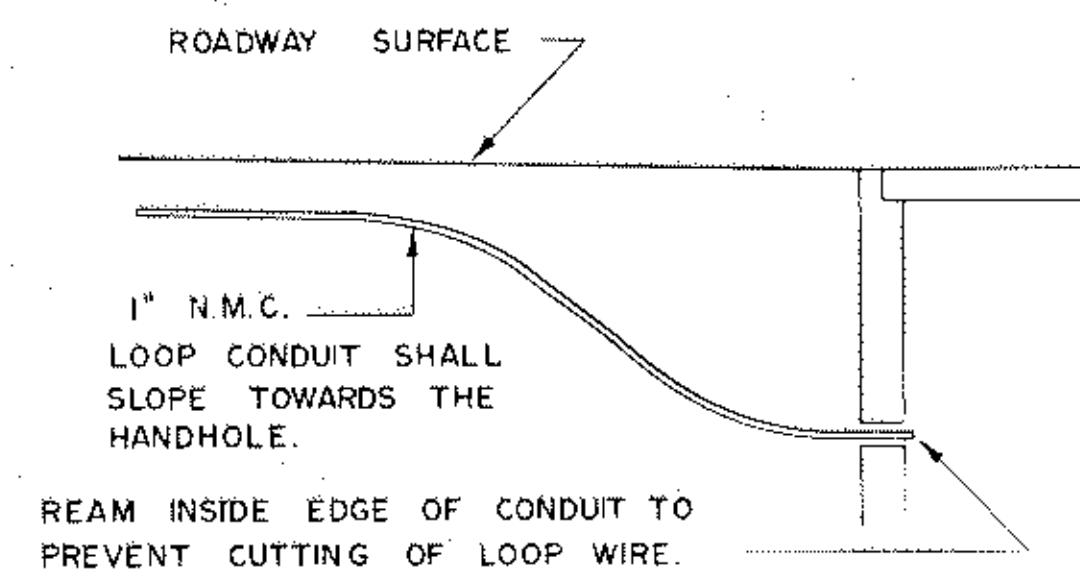
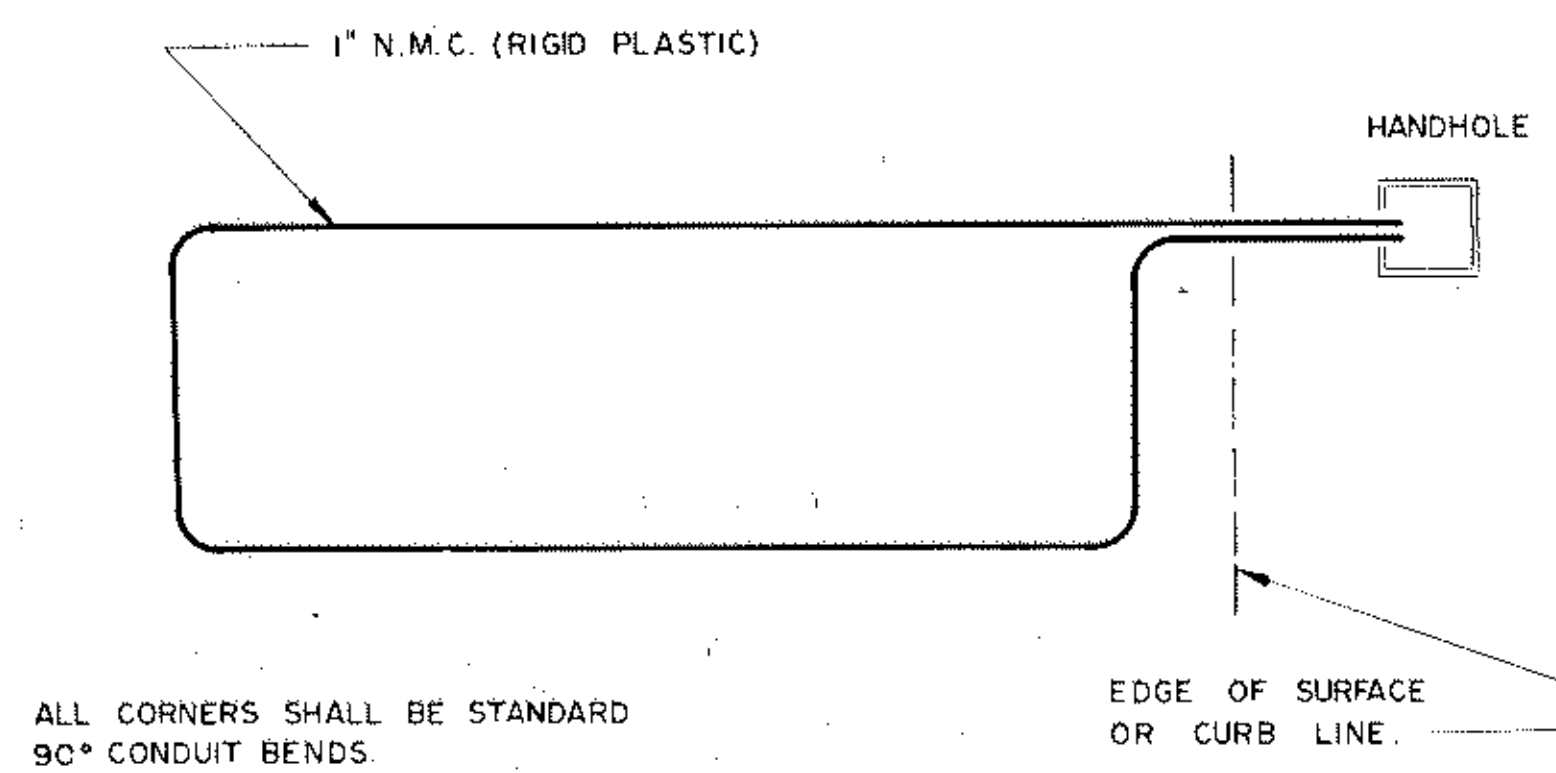
LOOP DETECTOR CONDUITS ARE TO BE INSTALLED AS FOLLOWS:

- 1) INSTALL THE BITUMINOUS BINDER COURSE.
- 2) CUT TRENCHES FOR ALL DETECTORS AND INSTALL EACH COMPLETE DETECTOR ASSEMBLY, INCLUDING WHERE SHOWN PLASTIC CONDUIT, "T" CONDALETTE, AND STEEL CONDUIT, WITH THE DETECTOR WIRE PULLED THROUGH THE COMPLETE ASSEMBLY TO / FROM THE HANDHOLE.
- 3) REFILL THE TRENCHES WITH MATERIAL EQUAL TO THE BITUMINOUS BINDER COURSE.
- 4) INSTALL THE BITUMINOUS WEARING COURSE.



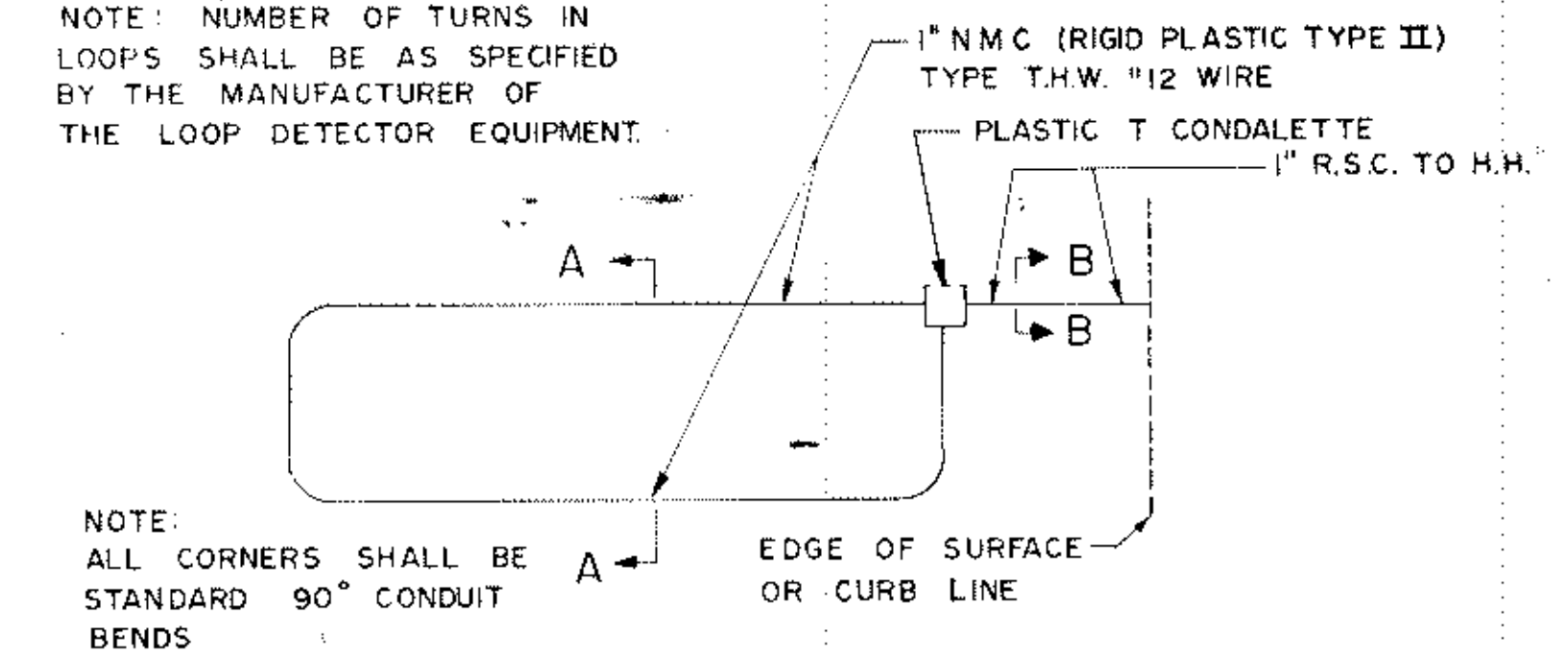
LOOP DETECTOR DETAIL "B"

SCALE NONE

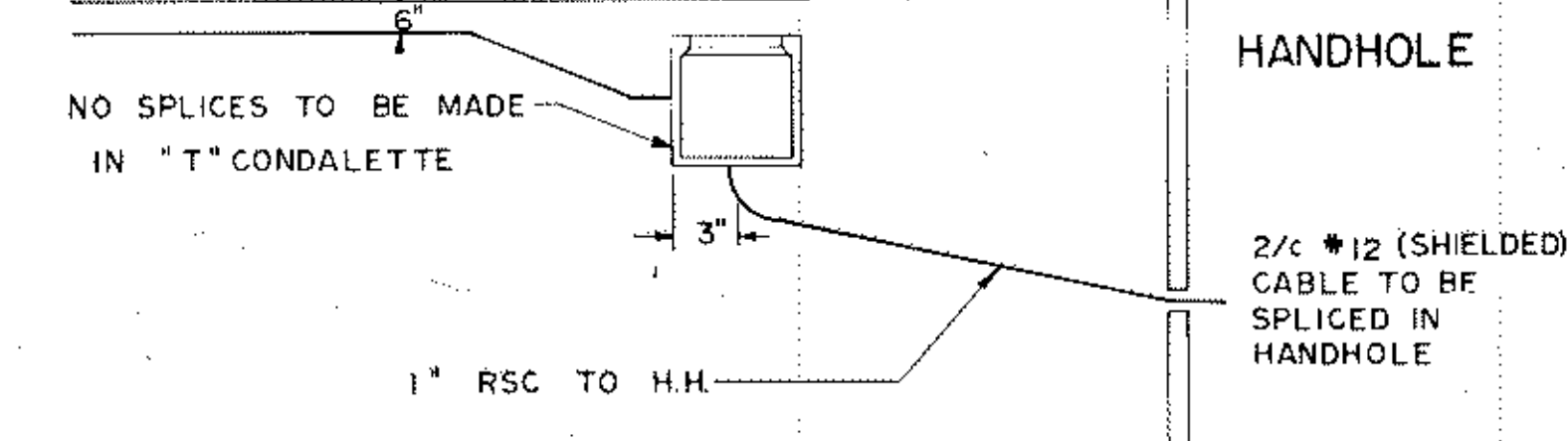
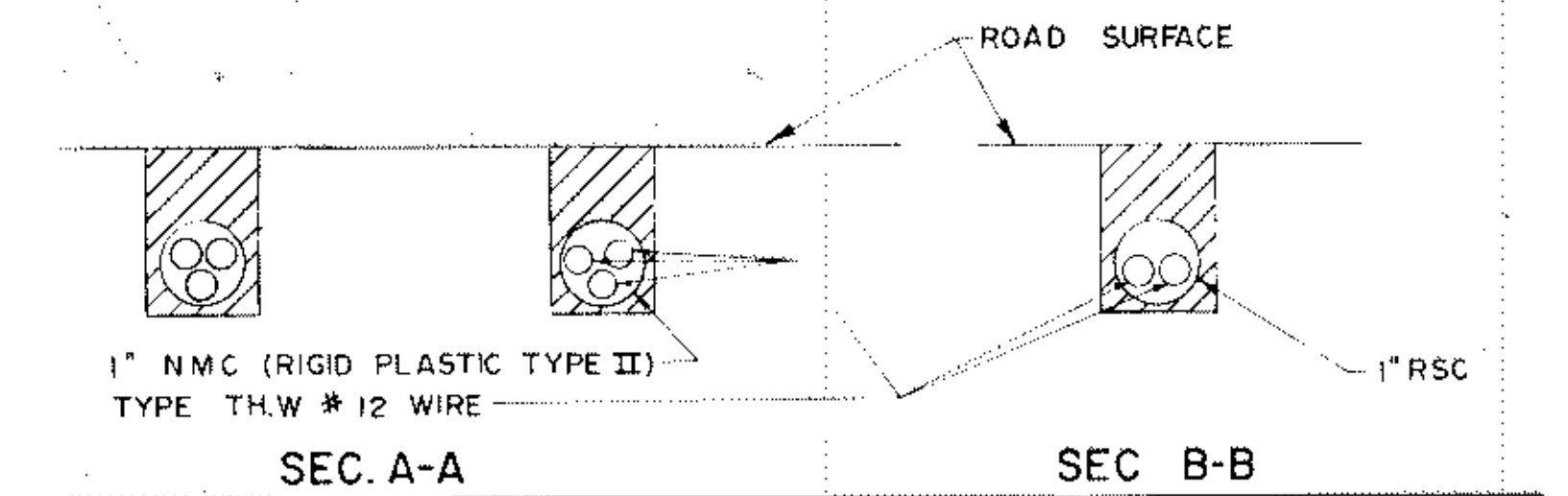


LOOP DETECTOR DETAIL "C"

NOTE: NUMBER OF TURNS IN LOOPS SHALL BE AS SPECIFIED BY THE MANUFACTURER OF THE LOOP DETECTOR EQUIPMENT.



NOTE: ALL CORNERS SHALL BE STANDARD 90° CONDUIT BENDS



NOTE: LOOP CONDUIT SHALL SLOPE TOWARDS "T" CONDALETTE AND STEEL CONDUIT SHALL SLOPE TOWARDS HANDHOLE SUCH THAT ENTIRE DETECTOR INSTALLATION DRAINS INTO HANDHOLE.