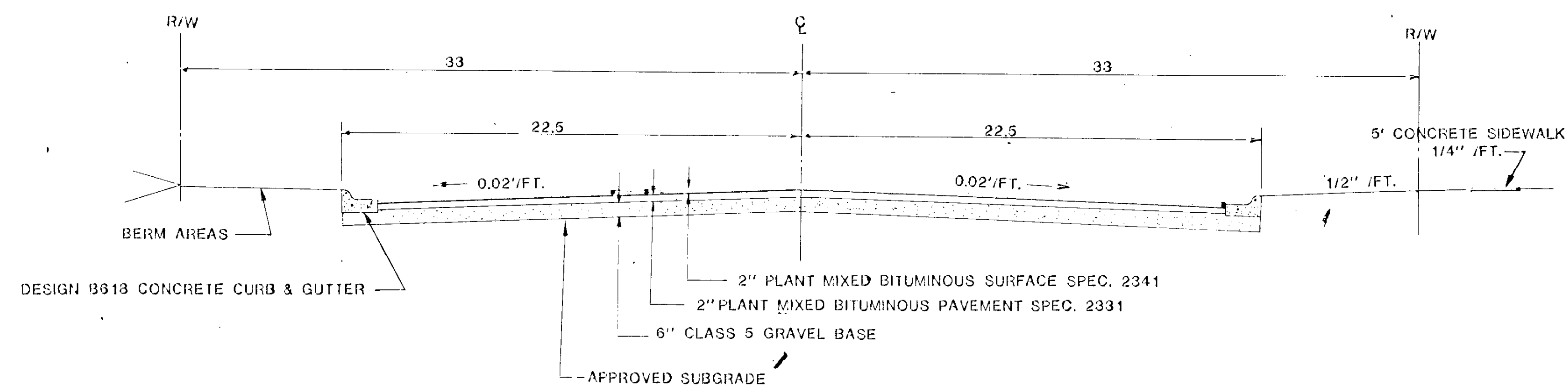


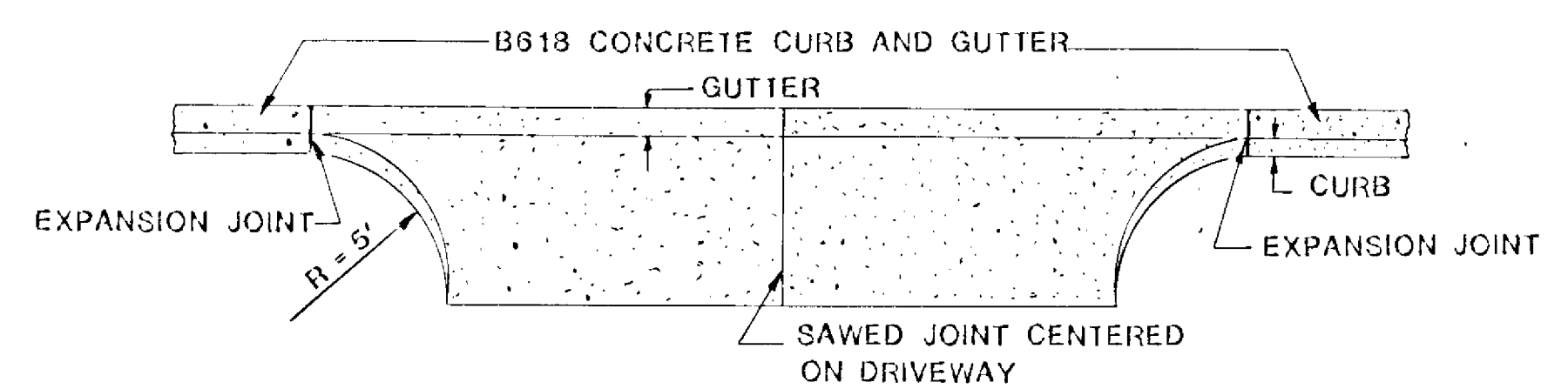
STATEMENT OF ESTIMATED QUANTITIES					
SPEC. NO.	REF.	ITEM	UNIT	QUANTITIES	
				S.A.P. 02-612-04	OTHER
EXCAVATION AND EMBANKMENT					
2101.502		Clearing	Tree	25	
2101.507		Grubbing	Tree	25	
2105.501		Common Excavation	Cubic Yard	13,000	
DRAINAGE AND UTILITIES					
2503.541		12" R. C. Pipe Sewer, Design C2, Class II	Linear Foot	394	28
2503.541		15" R. C. Pipe Sewer, Design C2, Class II	Linear Foot	262	145
2503.541		18" R. C. Pipe Sewer, Design C2, Class II	Linear Foot	412	
2503.541		21" R. C. Pipe Sewer, Design C2, Class II	Linear Foot	218	
2503.541		27" R. C. Pipe Sewer, Design C2, Class II	Linear Foot	980	
2506.508		Construct Manholes, Special Design	Each	6	
2506.509		Construct Catchbasins, Special Design	Each	5	1
Specification		Construct Special Inlet Structure (2'x6')	Each	2	
2506.522		Adjust Frame and Ring Castings	Each	25	
Specification		Adjust Water Valve Box	Each	4	
Specification		Relocate Hydrants	Each	1	
STREET SECTION					
2531.501		Concrete Curb and Gutter (B-618)	Linear Foot	9650	
2211.501		Aggregate Base, Class 5	Ton	6000	
2358.501		Bituminous Material For Prime Coat	Gallon	5500	
2331.504		Bituminous Material For Mixture (2331)	Ton	90	
2331.510		Binder Course Mixture	Ton	2000	
2357.502		Bituminous Material For Tack Coat	Gallon	900	
2341.504		Bituminous Material For Mixture (2341)	Ton	100	
2341.508		Wearing Course Mixture	Ton	2000	
Specification		Concrete Driveway Apron	Linear Foot	510	
2531.503		Concrete Median	Square Yard	1500	
Specification		Concrete Valley Gutter	Square Foot	80	
Specification		Triangular Valley Gutter Section	Each	2	
2521.501		4" Concrete Walk	Square Foot	19,500	
2575.501		Seeding	Acre	2	
2575.505		Sodding	Square Yard	7000	
Specification		Water	1000 (H) Gal.	200	
Specification		Pedestrian Curb Ramps	Each	8	
2531.507		4" Concrete Driveway Pavement	Square Yard	250	

Note: The Specification Standard Plates referenced here refer to the standard plates included in the specification.

- Construct Manholes, Design Special as per Specification Standard Plate No. CR304, CR402, 3003, 3004, 4003, 4004 and 4005A.
- Construct Catchbasins, Design Special as per Specification Standard Plate No. 3101, 3102, 4003, 4004 and 4005A.
- Concrete Curb and Gutter (B-618) as per Specification Standard Plate No. 5102 and 5201.
- Construct Pedestrian Curb Ramps as per Specification Standard Plate No. CR505.
- Relocate Hydrants as per Specification Standard Plate No. CR104.
- Use Barricades as per Standard Plate No. 5801.



TYPICAL STREET SECTION



DRIVEWAY OPENING DETAIL

I hereby certify that this plan, specification or report was prepared by me or under my direct supervision and that I am a duly Registered Professional Engineer under State of Minn. Statute 3.602 to 3.615.
 Date 4/8/75 Minn. Reg. No. 3959
 Keith P. Caswell

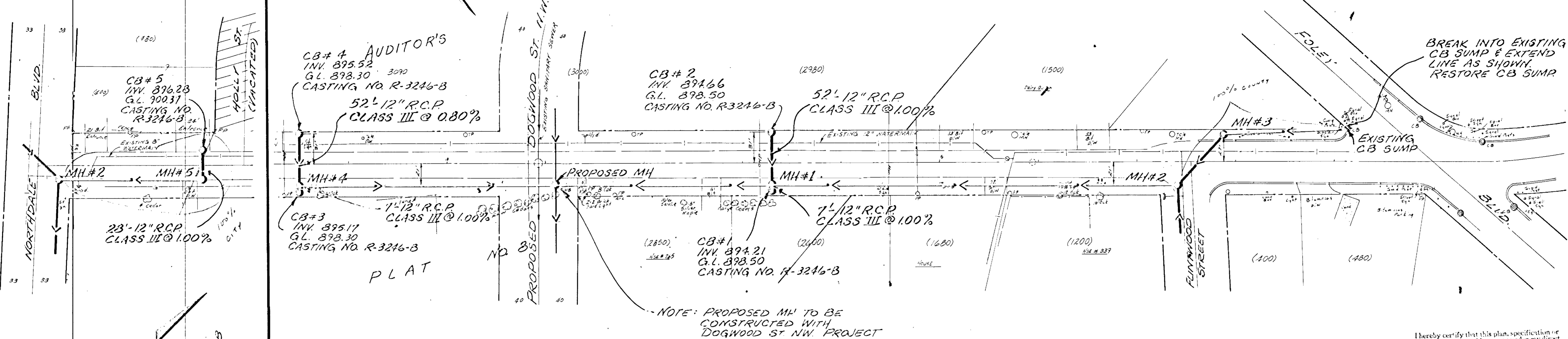
S.A.P. 02-612-04 (CSAH NO.12)

consulting engineers diversified (CED) 500 BOX 105500 IRVING 40018 55369 812/455-281	DESIGNED BY	TKJ	CIVIL MUNICIPAL PLANNING ENVIRONMENTAL LAND SURVEYING SOIL EXPLORATION	CITY OF COON RAPIDS - ANOKA COUNTY NORTHDALE BLVD. UPGRADING ESTIMATED QUANTITIES & STREET SECTION
	CHECKED BY	ST		
REVISIONS SCALE: AS SHOWN DATE: 4/8/75	DRAWN BY MEJ	SHEET 2 OF 10	FILE NO. CR302-56	

FLINTWOOD STREET

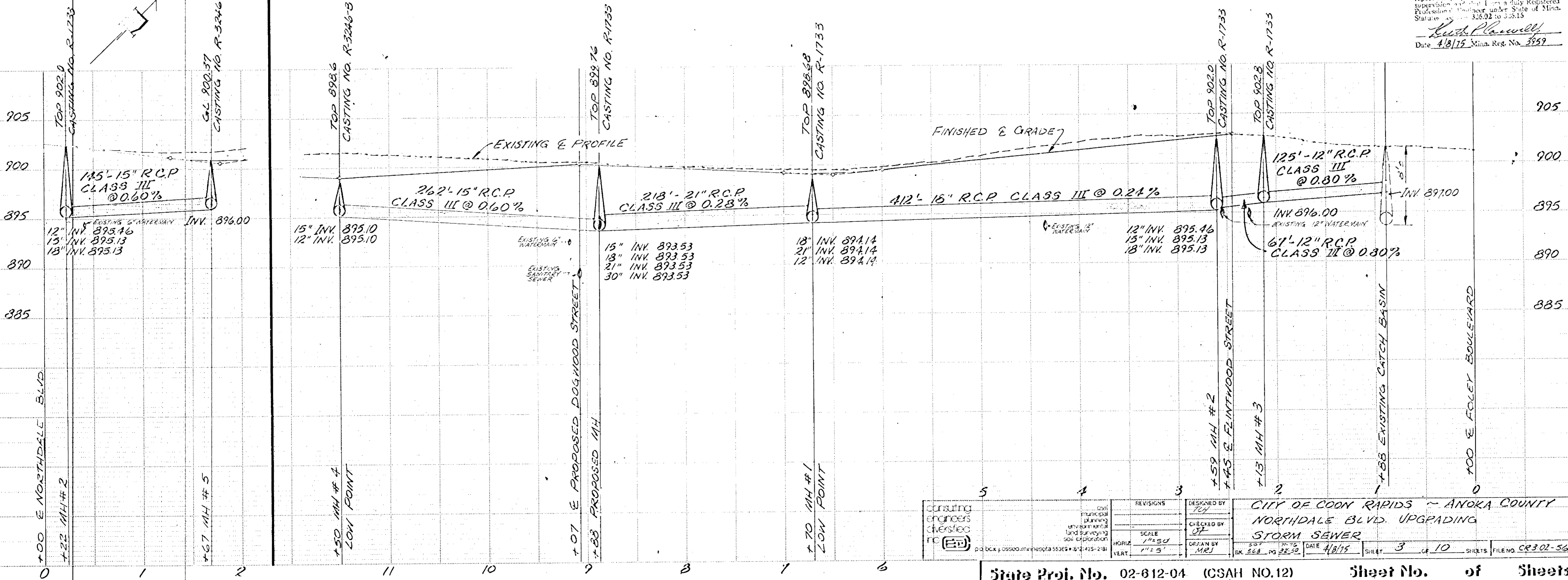
NORTHDALE BOULEVARD

Fed. Proj. No.



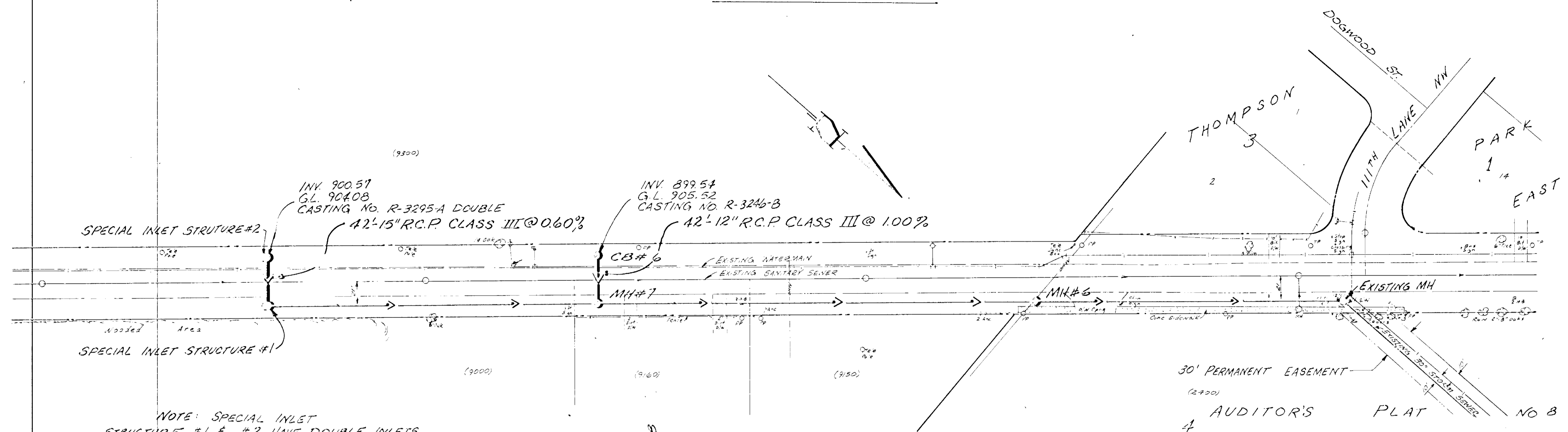
NOTE: PROPOSED MH TO BE CONSTRUCTED WITH DOGWOOD ST NW PROJECT

Thereby certify that this plan, specification or report was prepared by me or under my direct supervision and that I am a duly Registered Professional Engineer under State of Minn. Statutes, ch. 326.02 to 326.15
Lutz Plawinski
 Date 4/8/15 Minn. Reg. No. 3359



consulting engineers diversified inc. (EIT)	DESIGNED BY TUN	CITY OF COON RAPIDS - ANOKA COUNTY NORTHDALE BLVD. UPGRADING STORM SEWER
	CHECKED BY OF	
	DATE 4/8/15	
SCALE HORIZ 1/4" = 50' VERT 1" = 5'	SHEET NO. 3 OF 10 FILE NO. CR302-56	

NORTHDALE BOULEVARD



NOTE: SPECIAL INLET STRUCTURE #1 & #2 HAVE DOUBLE INLETS REQUIRING 2'x6' SIZE STRUCTURE

I hereby certify that the above specifications or report was prepared by me or under my direct supervision and that I am a duly Licensed Professional Engineer under the State of Minn. Statute Chapter 320.01
Kenneth P. Lawless
 Date 4/8/75 Minn. Reg. No. 3959

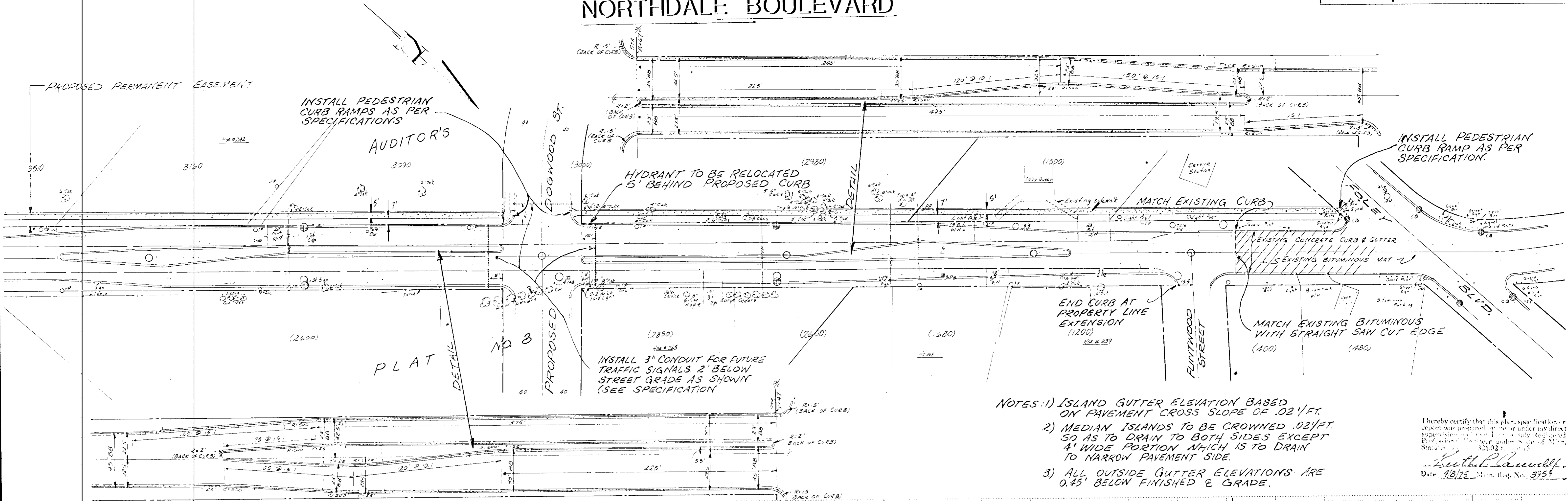


DESIGNED BY P. J. [Signature]	REVISIONS	DESIGNED BY P. J. [Signature]	CITY OF COON RAPIDS - ANOKA COUNTY NORTHDALE BLVD UPGRADING STORM SEWER
CHECKED BY D. J. [Signature]	SCALE HORIZ 1"=50' VERT 1"=5'	DRAWN BY [Signature]	
DATE 4/8/75	DATE 4/8/75	DATE 4/8/75	
SHEET 4	OF 10	SHEETS	

Copy Equipment Form #2

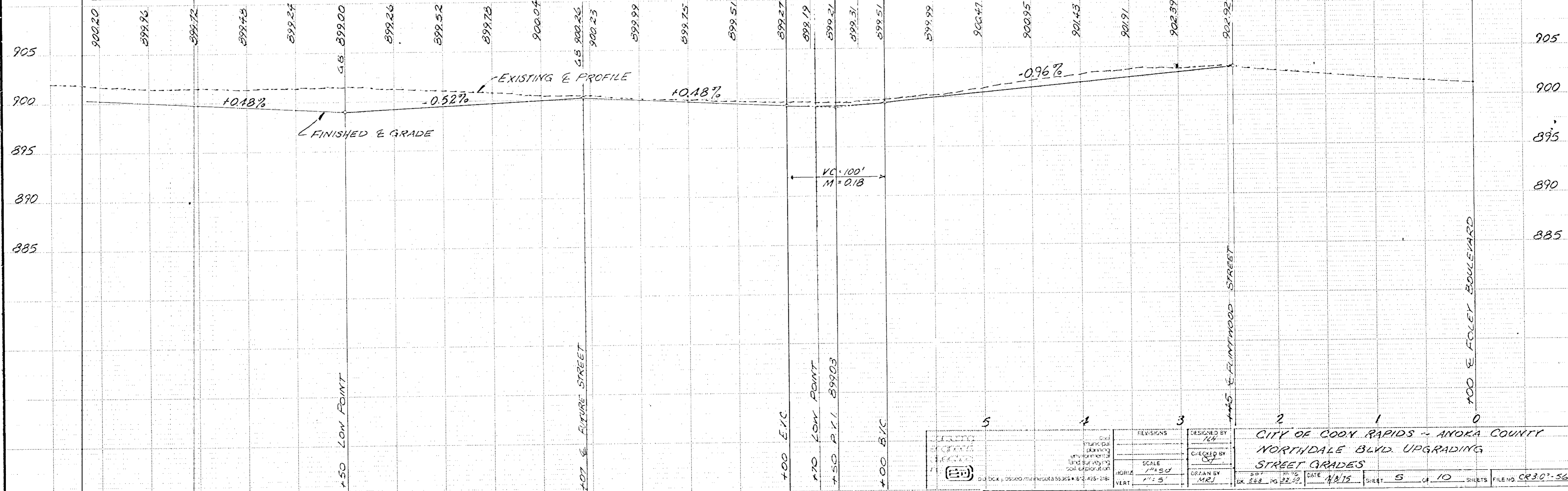
NORTHDALE BOULEVARD

Fed. Proj. No.



I hereby certify that this plan, specification or report was prepared by me or under my direct supervision and that I am a duly Registered Professional Engineer under the State of Minn. Statutes, Chapter 325.02 to 325.05.

Keith Lamell
Date 4/8/75 Minn. Reg. No. 3959

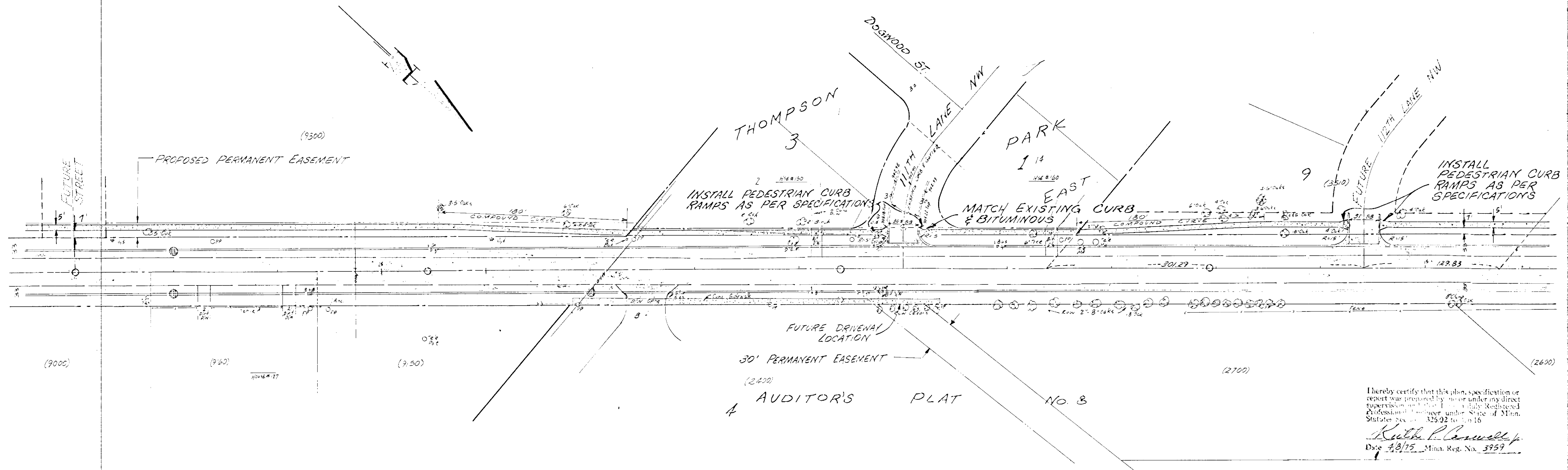


	REVISIONS DESIGNED BY: <i>RLH</i> CHECKED BY: <i>CT</i> SCALE: 1" = 50' DATE: 4/8/75	CITY OF COON RAPIDS - ANOKA COUNTY NORTHDAL E BLVD. UPGRADING STREET GRADES SHEET 5 OF 10 SHEETS FILE NO. CR30-56
--	--	---

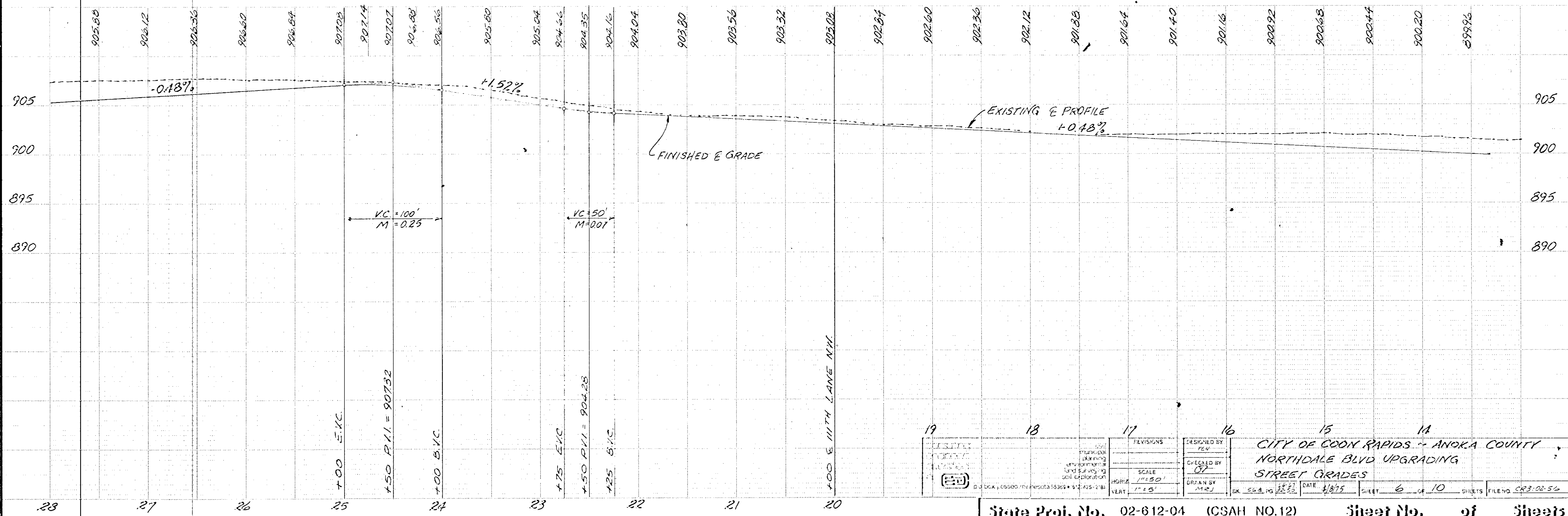
Copy Requirement Form #7

NORTHDALE BOULEVARD

Fed. Proj. No.



I hereby certify that this plan, specification or report was prepared by me or under my direct supervision and that I am a duly Registered Professional Engineer under State of Minn. Statute Sec. 325.02 to 325.16
Keith P. Lamell
 Date 4/8/75 Minn. Reg. No. 3959

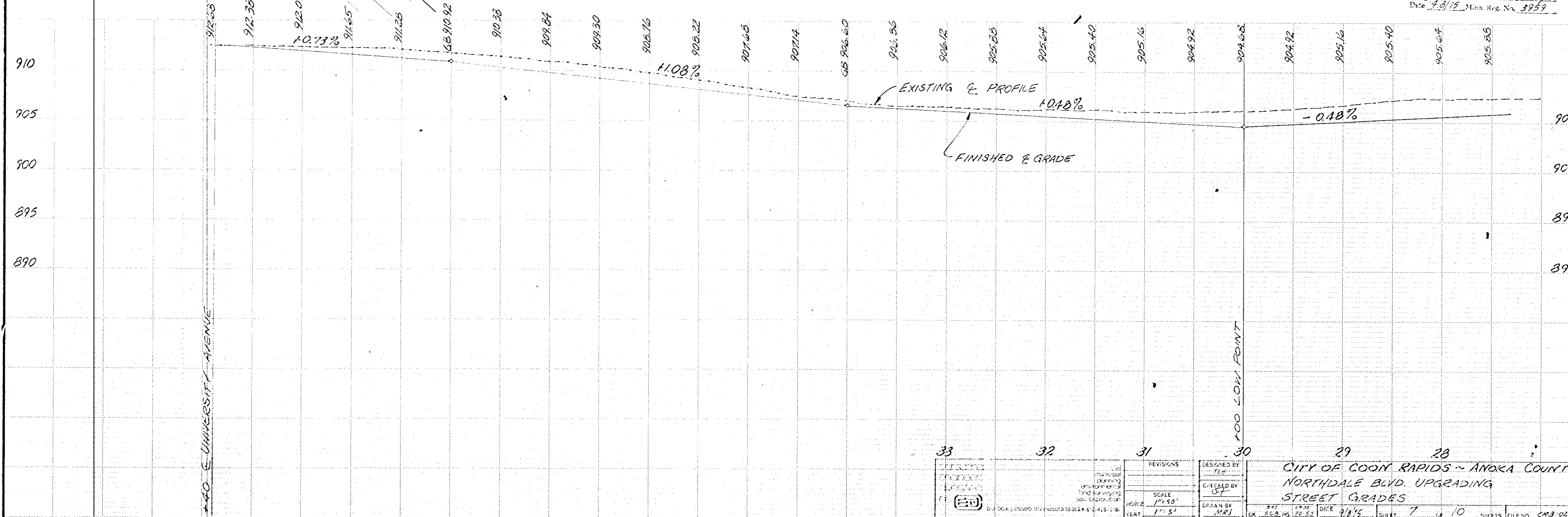
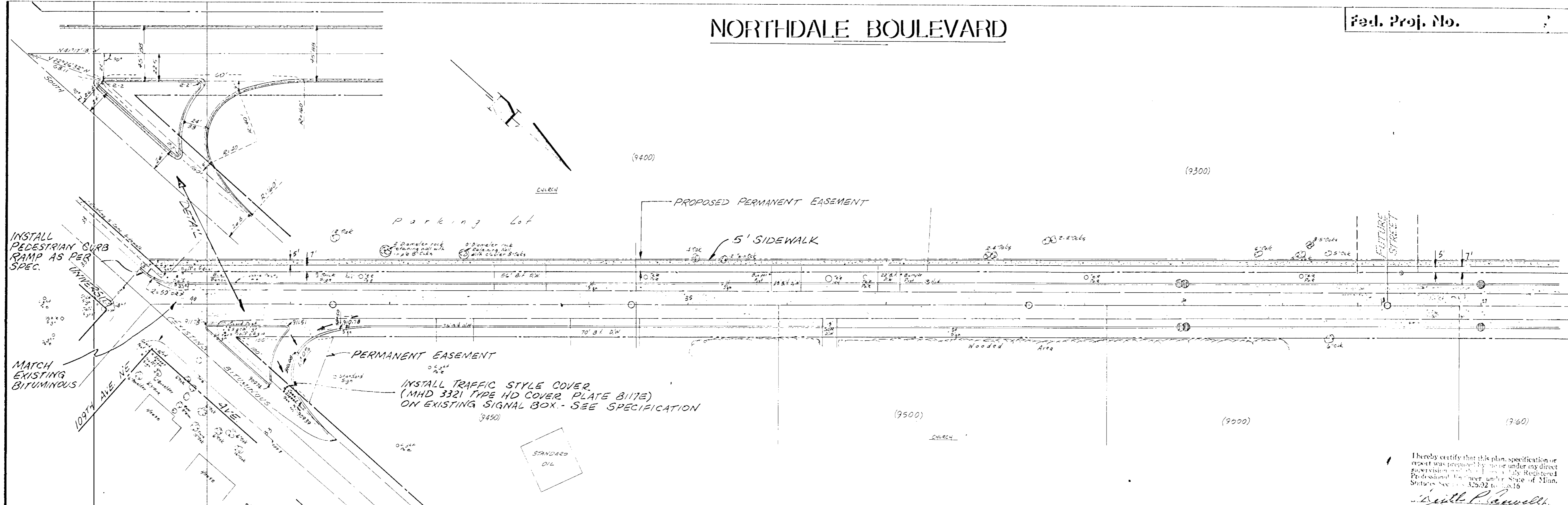


19	18	17	16	15	14
REVISIONS DESIGNED BY CHECKED BY SCALE HORIZ. 1" = 50' VERT. 1" = 5' DATE 4/8/75			CITY OF COON RAPIDS - ANOKA COUNTY NORTHDAL BLVD UPGRADING STREET GRADES		
SHEET 6 OF 10 SHEETS FILE NO. CR3-02-56			FILE NO. CR3-02-56		

Copy Attachment Form #27

NORTHDALE BOULEVARD

Fed. Proj. No. _____



I hereby certify that this plan, specification or report was prepared by me or under my direct supervision and that I am a duly Registered Professional Engineer under State of Minn. Statute Section 326.02 to 326.16
Keith P. Rowell
 Date 4/8/15 Minn. Reg. No. 3959

33	32	31	30	29	28
DESIGNED BY CHECKED BY DRAWN BY			REVISIONS SCALE HORIZ 1" = 50' VERT 1" = 5'		
CITY OF COON RAPIDS - ANOKA COUNTY NORTHDALE BLVD. UPGRADING STREET GRADES			DATE 4/8/15 SHEET 7 OF 10 FILE NO. CR3-02-56		